



SEC OF DOWNTOWN FARMINGTON

FARMINGTON, MI

RETAIL SPACE AVAILABLE NOW

SEC OF DOWNTOWN FARMINGTON

FARMINGTON, MI

ADDRESS

33335 Grand River Avenue
Farmington, MI 48335

AVAILABILITY

- 2,348 SF (1,084 Street Level Retail and 1,264 of Lower Level Space)

FEATURES

Join Beyond Juice, Kickstart Farmington, Ground Control Coffee and PLU Skate Shop! This property is located at the corner of Grand River Avenue and Farmington Road in Downtown Farmington. The southeast corner has been redeveloped into a class A office space occupied by GLP Financial Group.

We currently have an opportunity at the property, with up to 2,348 SF available. Come join the charm of Downtown Farmington and be apart of this iconic historic building.

NEIGHBORING TENANTS



DEMOGRAPHICS (2022)

	1M	3M	5M
AVG HOUSEHOLD INCOME	\$111,390	\$116,160	\$116,416
POPULATION	9,788	77,056	204,346
DAYTIME POPULATION	9,358	84,453	252,770





33335 GRAND RIVER AVENUE

GRAND RIVER AVENUE

FARMINGTON ROAD

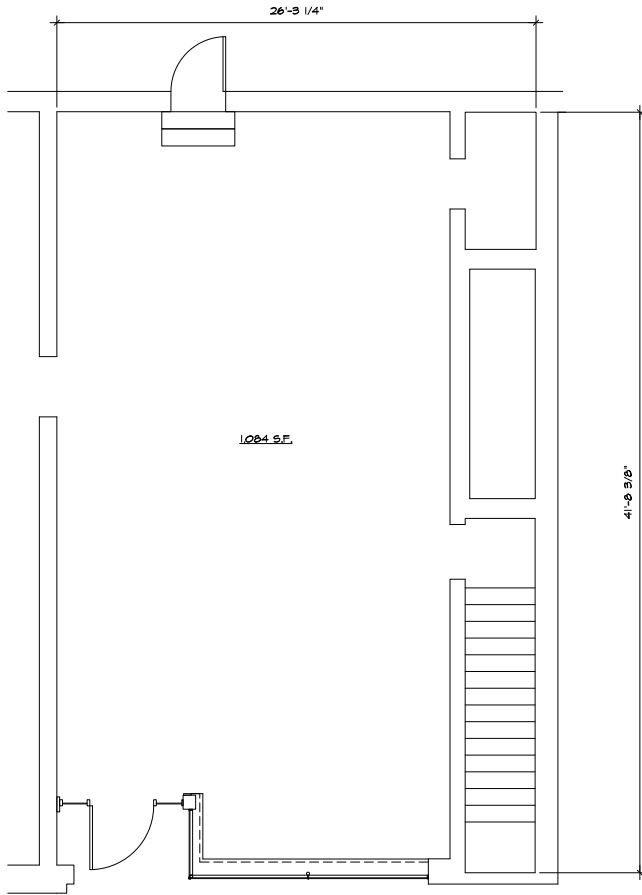




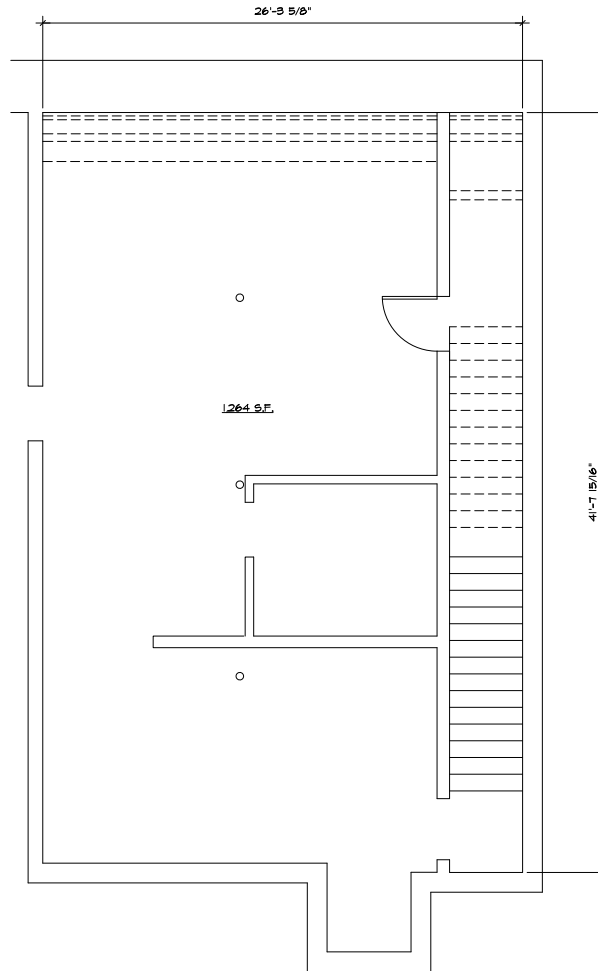
23622 FARMINGTON RD
1,084 SF STREET LEVEL RETAIL/
1,264 SF LOWER LEVEL
2,348 TOTAL SF AVAILABLE

GRAND RIVER AVENUE

FARMINGTON ROAD



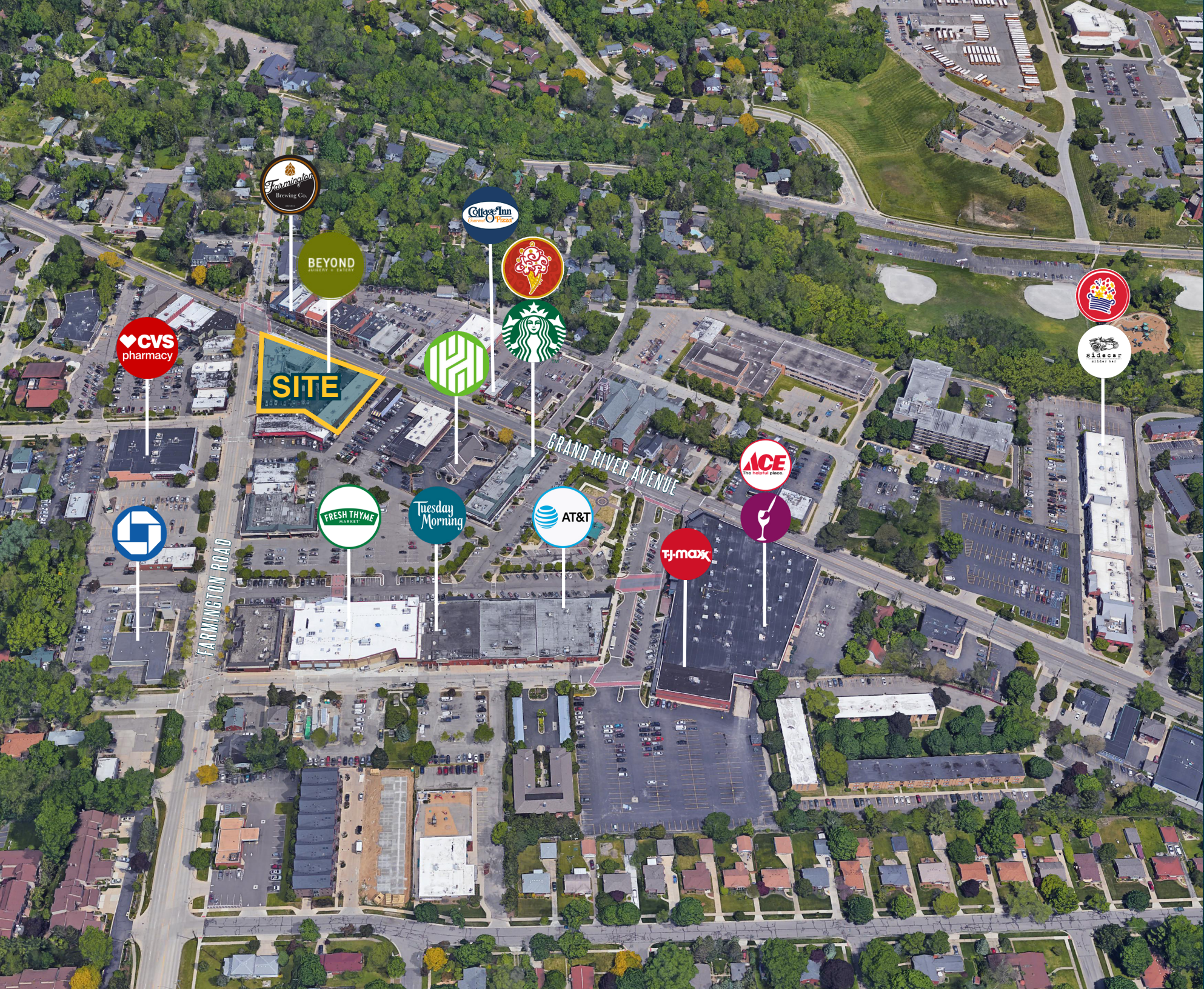
FIRST FLOOR
LEASE OUTLINE
1/4" = 1'-0"



BASEMENT
LEASE OUTLINE
1/4" = 1'-0"



Soil	
LEASE OUTLINE	
Project: 23622 FARMINGTON RD. FARMINGTON, MI 48336	
Drawing Title LEASE OUTLINE	
Project Number 21-40-109	
Drawn	KJM
Checked	DJS
Scale	1/4" = 1'-0"
Dwg. 23622 FARMINGTON RD.	
Revised For	Date
OWNER REVIEW	2-19-21
By	DJS
Sheet Number	
LOD	
of	
1	



FARMINGTON ROAD

GRAND RIVER AVENUE



SEC OF DOWNTOWN FARMINGTON

FARMINGTON, MI

KAREN GARGARO

248.855.6800

KGargaro@MidAmericaGrp.com



38500 Woodward Avenue
Suite 100
Bloomfield Hills, MI 48304
248.855.6800
MidAmericaGrp.com

