



FLEX/WAREHOUSE/OFFICE AVAILABLE FOR SUBLEASE – 10,180 SF

ALEX CARUSO
408-464-8388

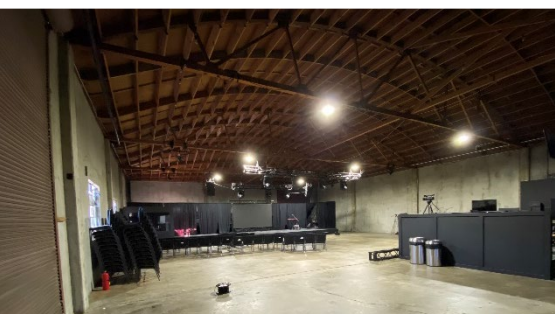
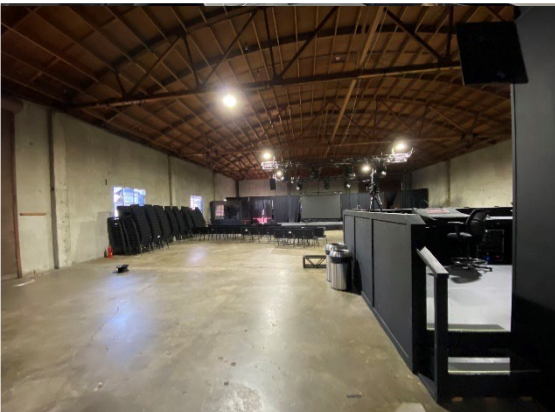
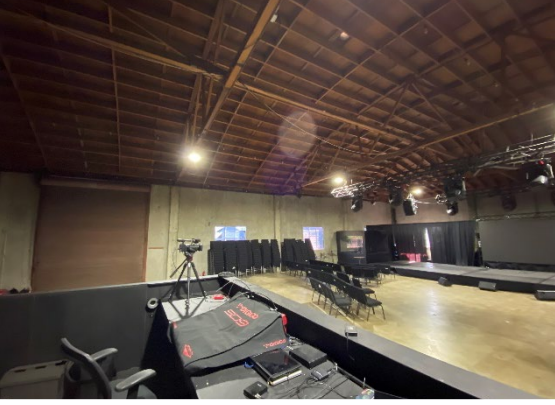
DRE #02136271
ACARUSO@GLOBALCOMMERCIALPROP.COM

910 - 916 San Antonio Road, Palo Alto, CA

www.GlobalCommercialProp.com

WILL LONGO
408-529-8110

DRE #02126991
WLONGO@GLOBALCOMMERCIALPROP.COM



FLEX/WAREHOUSE/OFFICE AVAILABLE FOR SUBLEASE – 10,180 SF

ALEX CARUSO
408-464-8388

DRE #02136271
ACARUSO@GLOBALCOMMERCIALPROP.COM

910 - 916 San Antonio Road, Palo Alto, CA

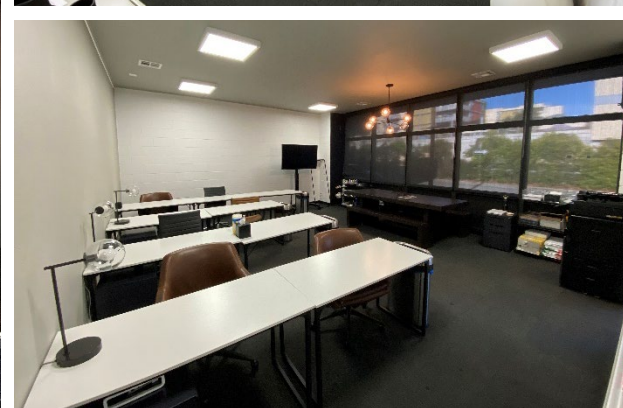
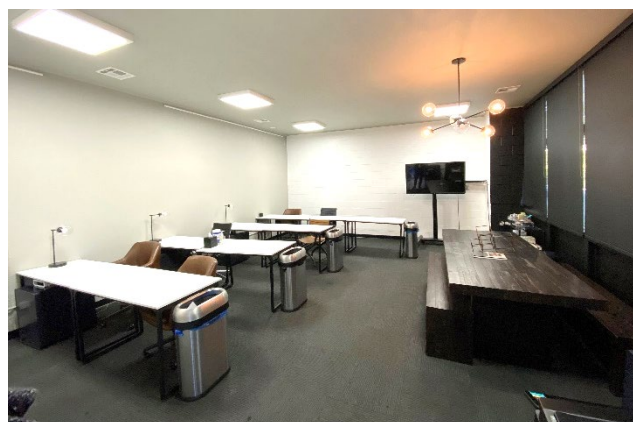
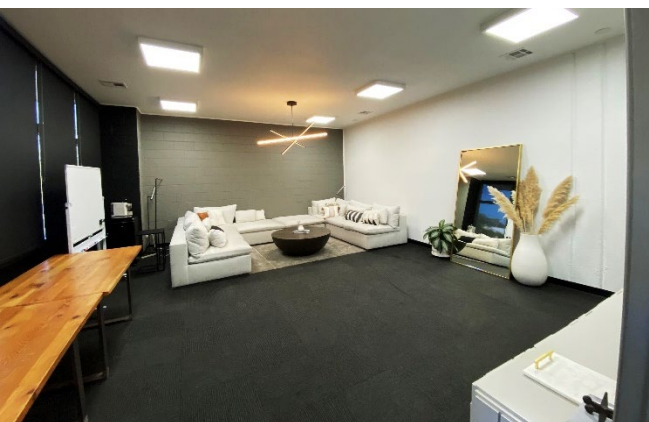
www.GlobalCommercialProp.com

WILL LONGO
408-529-8110

DRE #02126991
WLONGO@GLOBALCOMMERCIALPROP.COM

FLEX/WAREHOUSE/OFFICE AVAILABLE FOR SUBLEASE – 10,180 SF

GLOBAL
COMMERCIAL



ALEX CARUSO
408-464-8388

DRE #02136271
ACARUSO@GLOBALCOMMERCIALPROP.COM

910 - 916 San Antonio Road, Palo Alto, CA

www.GlobalCommercialProp.com

WILL LONGO
408-529-8110

DRE #02126991
WLONGO@GLOBALCOMMERCIALPROP.COM

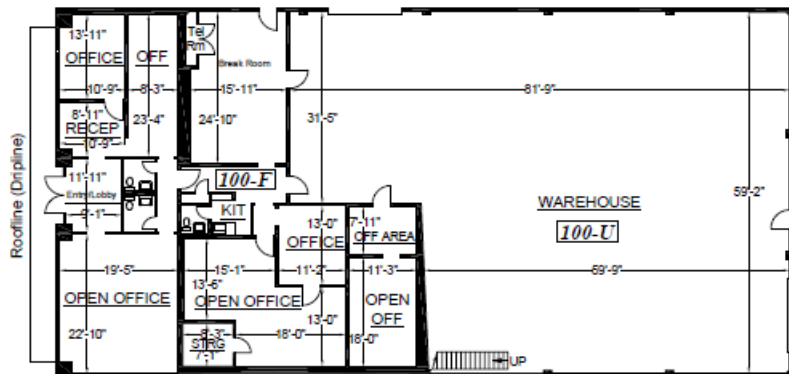
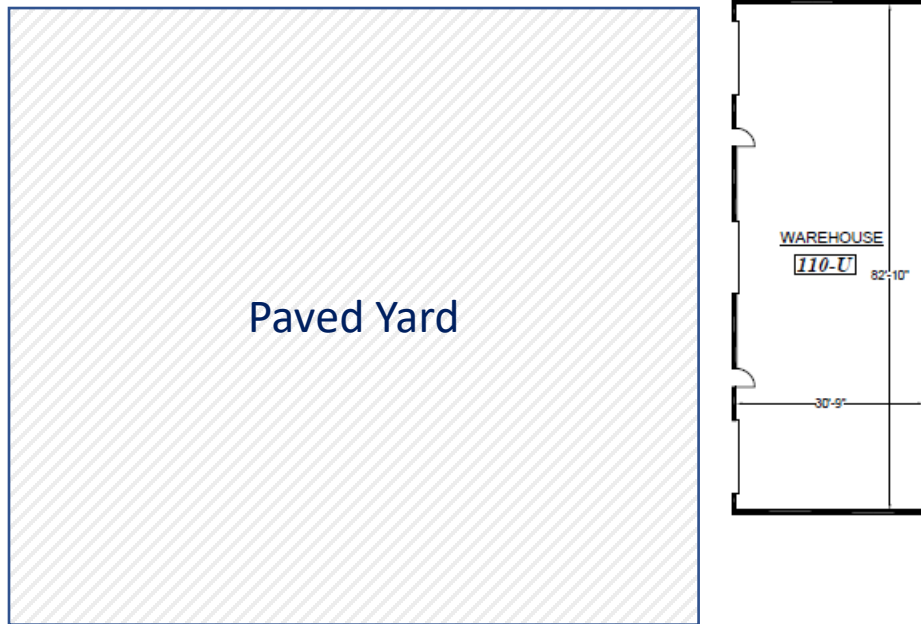
FLEX/WAREHOUSE/OFFICE AVAILABLE FOR SUBLEASE – 10,180 SF

Property Highlights

Open, High Ceiling, Collaborative Space.

- Flex Space
- Warehouse
- Creative Office
- Create, Collaborate, Confer
- Building #1 Approx. 7,500 SF Office/Warehouse
- Building #2 Approx. 2,500 SF Warehouse
- Kitchenette
- Updated Restrooms
- On-site Parking
- Newly Paved Fenced Yard
- Close Proximity to Highway 101
- Sublease through 6/15/2025

SAN ANTONIO AVENUE



ALEX CARUSO
408-464-8388

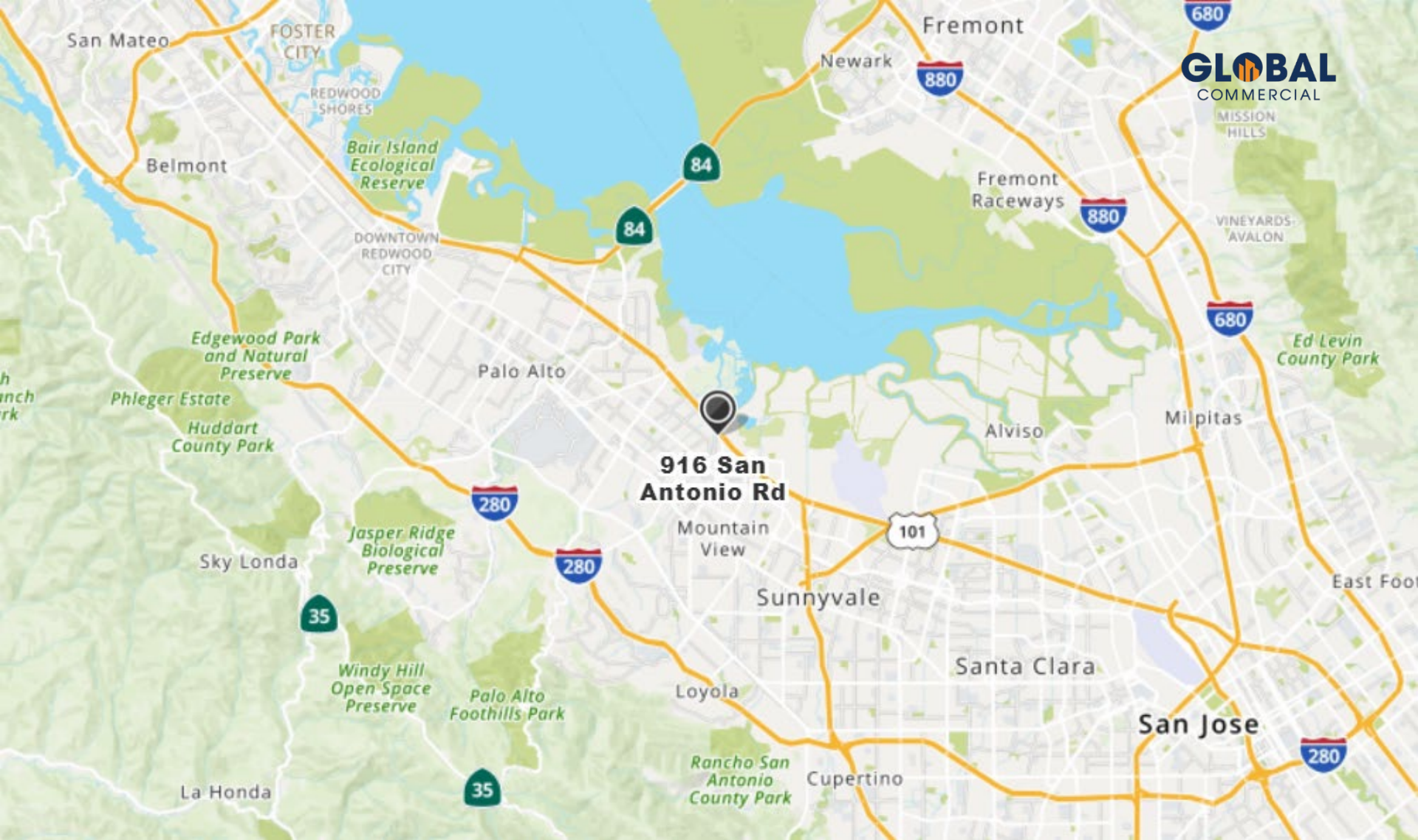
DRE #02136271
ACARUSO@GLOBALCOMMERCIALPROP.COM

910 - 916 San Antonio Road, Palo Alto, CA

www.GlobalCommercialProp.com

WILL LONGO
408-529-8110

DRE #02126991
WLONGO@GLOBALCOMMERCIALPROP.COM



FLEX/WAREHOUSE/OFFICE AVAILABLE FOR SUBLEASE – 10,180 SF

ALEX CARUSO
408-464-8388
DRE #02136271
ACARUSO@GLOBALCOMMERCIALPROP.COM

910 - 916 San Antonio Road, Palo Alto, CA

www.GlobalCommercialProp.com

WILL LONGO
408-529-8110
DRE #02126991
WLONGO@GLOBALCOMMERCIALPROP.COM

DISCLAIMER

The information contained in the following Marketing Brochure is proprietary and strictly confidential. It is intended to be reviewed only by the party receiving it from Global Commercial Properties, Inc. and should not be made available to any other person or entity without consent of Global Commercial Properties, Inc. This information has been prepared to provide summary and information to prospective purchasers, for the solicitation of interest and is not an offer to sell the property. Only a fully executed Real Estate Purchase Agreement shall bind the property.

The information provided herein is deemed to be accurate and to establish only a preliminary level of interest in the subject property. The information contained herein is not a substitute for thorough due diligence investigation. Global Commercial Properties, Inc. has not made any independent investigation, and makes no warranty or representation, with respect to the present or future use or zoning of the subject property, the future projected financial performance of the property, the size measurements or boundaries of the property and improvements, ADA-related issues or compliance, the presence or absence of contaminating or hazardous substances, PCB's or asbestos, the compliance with State, Federal, County or municipal law, nor the physical condition of the improvements thereon. The information contained in this Marketing Brochure has been obtained from sources believed to be reliable; however, Global Commercial Properties, Inc. has not verified, and will not verify, any of the information contained herein, nor has Global Commercial Properties, Inc. conducted any investigation regarding these matters and makes no warranty or representation whatsoever regarding the accuracy or completeness of the information provided. Prospective purchaser is advised and agrees to make its own investigation and determination regarding all matters affecting the value, condition, utility, size, compliance with Laws, and all aspects of the property's desirability and suitability for purchasers' intentions.

The information contained herein is subject to change without notice and the recipient of these materials shall not look to the Owner or the Broker, Global Commercial Properties, Inc., or any of their officers, employees, representatives, independent contractors or affiliates, for the accuracy or completeness thereof.

Property will be shown by appointment only.

ALEX CARUSO
408-464-8388

DRE #02136271
ACARUSO@GLOBALCOMMERCIALPROP.COM

910 - 916 San Antonio Road, Palo Alto, CA

www.GlobalCommercialProp.com

WILL LONGO
408-529-8110

DRE #02126991
WLONGO@GLOBALCOMMERCIALPROP.COM