

# 220 FRONT STREET

(Between Peck Slip and Beekman St.)



# 220 FRONT STREET

## FACTS & FIGURES

---

**TOTAL AREA**

800 sf

**TOTAL FRONTAGE**

25'

**CEILING HEIGHT**

16'

**POSSESSION**

Immediate

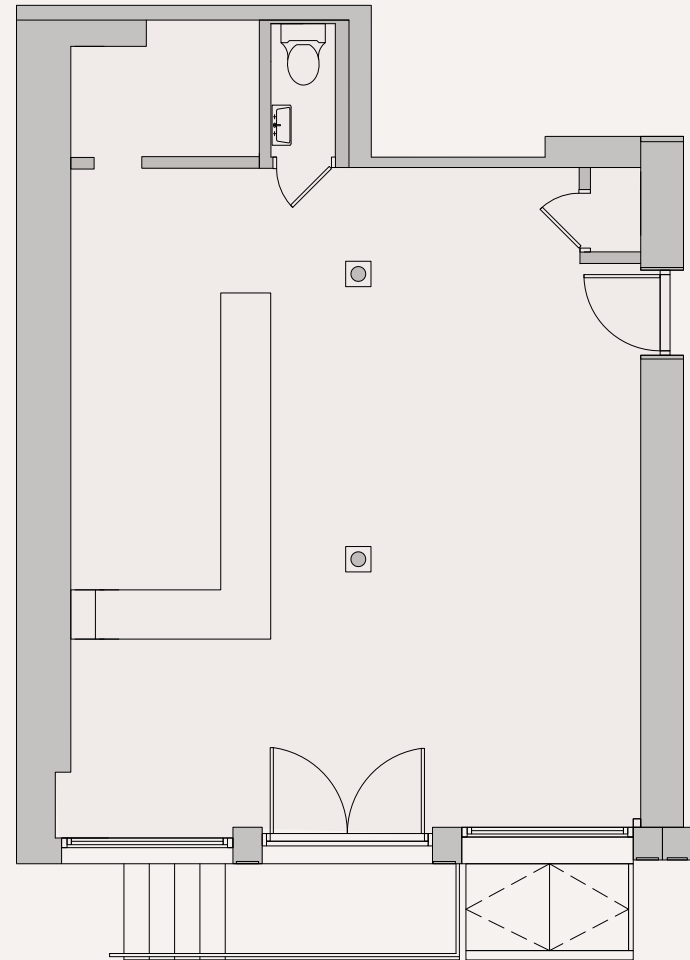
### SPACE HIGHLIGHTS

Turnkey bar installation

Alternate dry good uses considered

All glass storefront

Interior accentuated with historical  
detailing and materials



Front Street



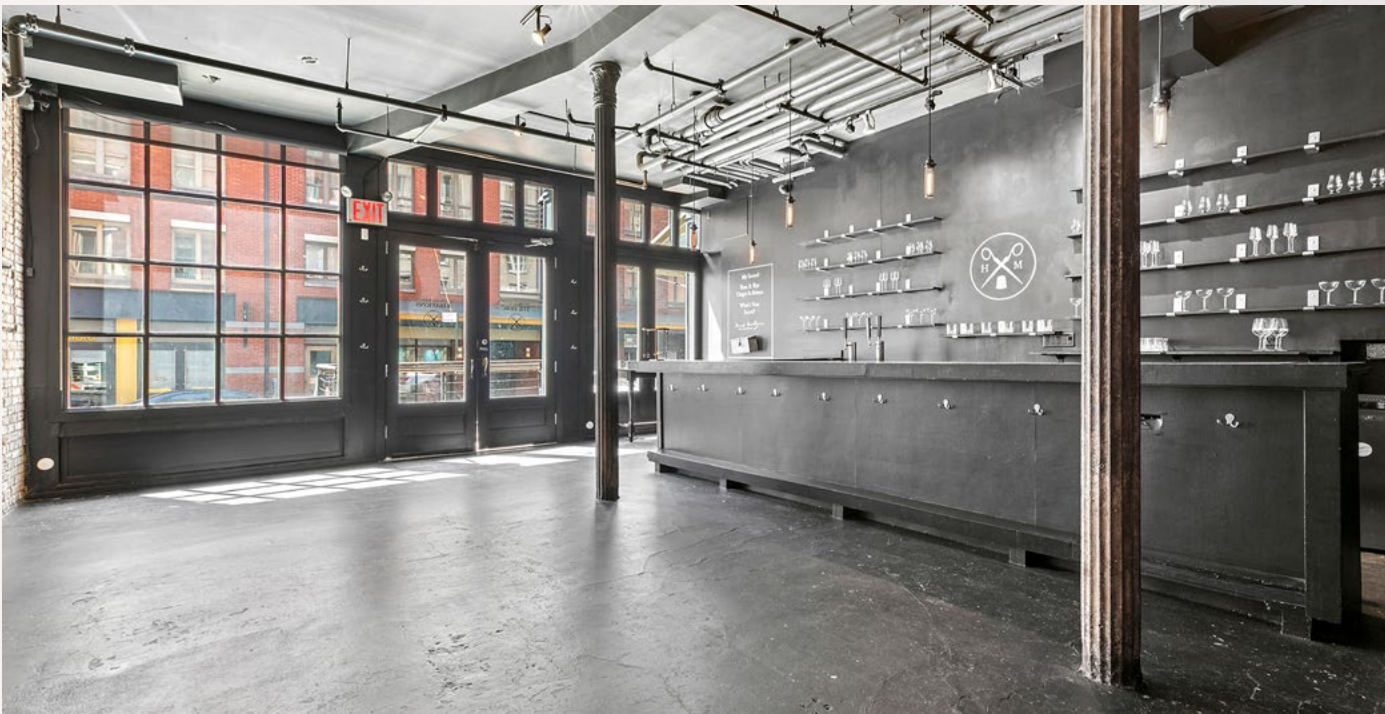
## DRINK IT IN

Tall ceilings and historical detailing characterize this modern bar with appreciable old-world flare. It's flexible open plan, glass storefront, and L-shape serving counter make it a unique opportunity.

220 FRONT STREET



**Exposed brick and  
slab floors...**



**...are showcased  
through a classic  
divided light storefront.**



**27,715,365**

Annual riders at  
Fulton Street Station



**1,051,748**

Annual ferry  
passengers at  
Wall Street terminal



**22 HOTELS /**

**3,470 ROOMS**  
within a 5min walk



**938 RESIDENTIAL UNITS**

under construction in Seaport District

**230,000 SF**

of new office space under construction  
in Seaport District



**2,991 SEAPORT DISTRICT  
RESIDENTS**

with an average HHI of \$205,860. (Seaport District defined as eight blocks bound by Dover Street & Peck Slip (N), Pearl and Front streets (W), John Street (S), and East River (E).)



**MAJOR  
SEAPORT  
OFFICE  
TENANTS:**

Nike, ESPN,  
Stripe, UNICEF,  
Health & Home Care,  
Allied World Alliance,  
The Legal Aid Society



**14 MILLION**

tourists visit  
Lower Manhattan  
annually



**60+ SUMMER  
CONCERTS**

at Pier 17 with 3,250+  
concert-goers each

# THE NEIGHBORHOOD

## SOUTH STREET SEAPORT





## THE NEIGHBORHOOD





## LEASING CONTACTS

---



**ZACH NATHAN**  
ZNathan@ksrny.com  
240.731.8333

**BRANDON BERGER**  
BBerger@ksrny.com  
646.236.8525

**HUNTER LAZAN**  
HLazan@ksrny.com  
772.559.5195



**KAREN ROSE**  
KRose@durst.org  
212.667.8705