



For LEASE
Excellent Location in Manassas
Drive-In, 12 wide x 14 high roll-up door

8750 Virginia Meadows Dr, Manassas, VA

Front corner space

Available immediately

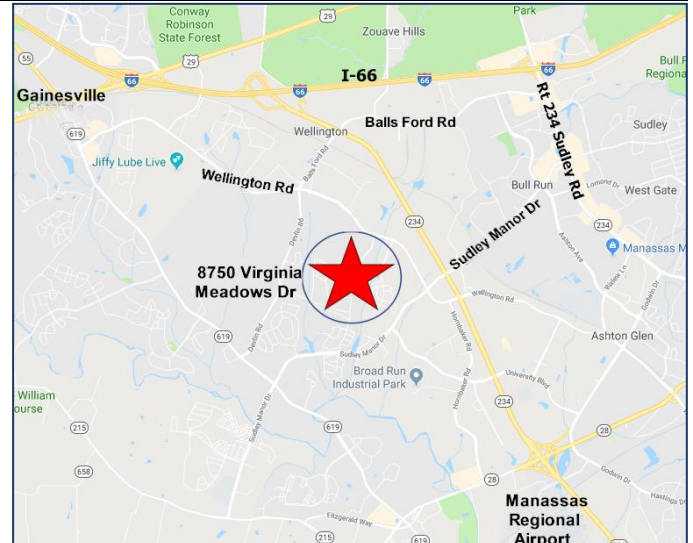
2,400 sf Industrial Warehouse/offices

M-2 zoning

2 - 12 x 13 windowed offices (with opening windows)



- 20 ft Ceiling height in warehouse
- Drive-In, 12 wide x 14 high roll-up door
- Excellent Condition many uses possible
- Air-conditioned offices

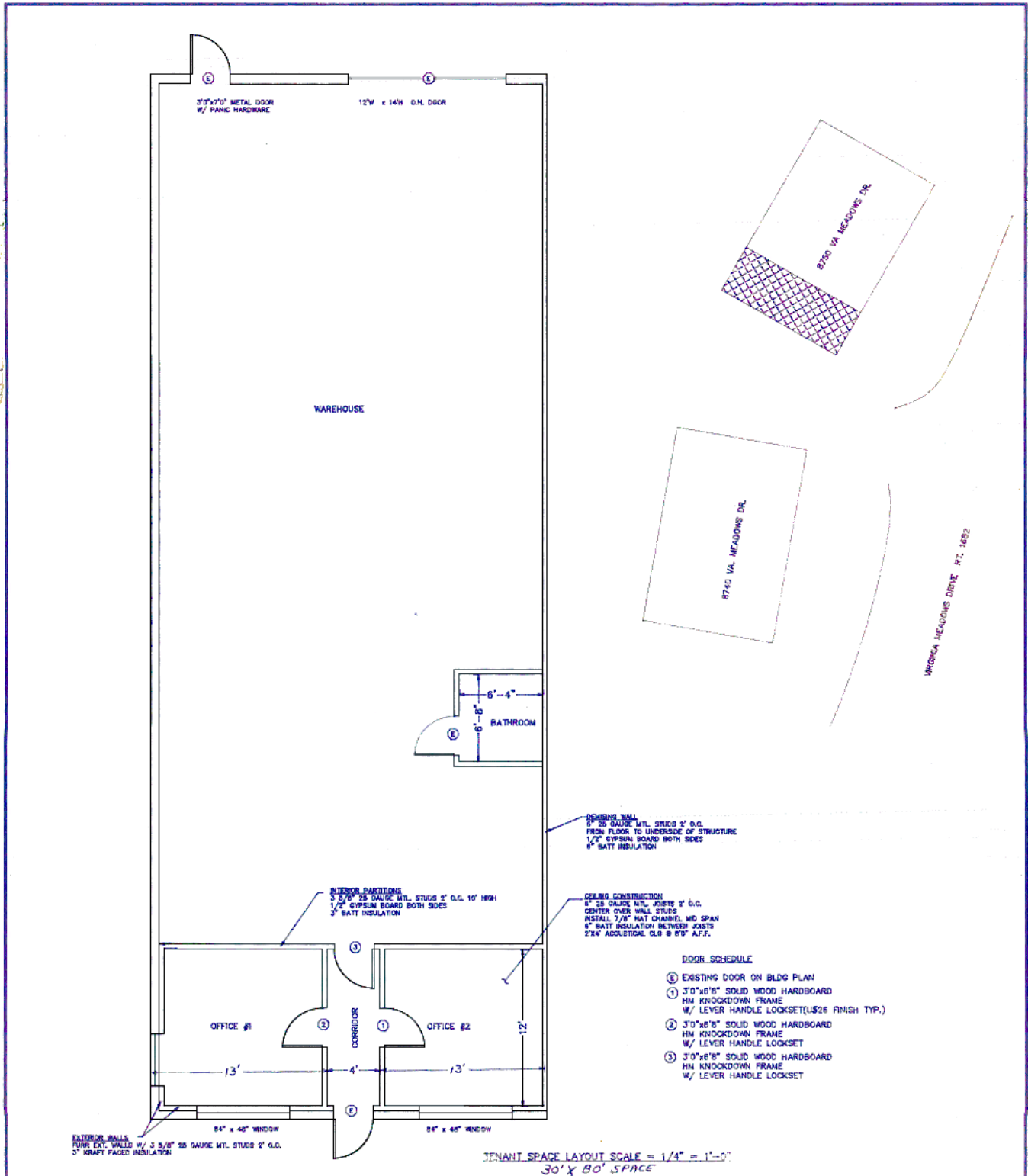


Shircliff Commercial Real Estate
5815 Cove Landing Rd, Unit 203
Burke, VA 22015

PETER MECHLIN
Cell 703-371-8419
pmechlin@uscomcom.com

DISCLAIMER: This information is deemed to be reliable or has been secured from sources we believe to be reliable; regardless there is no representation or warranty, expressed or implied, as to the accuracy of the information. All references are approximate, including age, sq. footage, income, and expenses. All parties should conduct their own independent investigations and rely solely on those results. The Owner and Shircliff Commercial Real Estate LLC reserve the right to withdraw or amend the offering at any time without notice to any party.

Floor Plan - 8750 Virginia Meadows Drive, Manassas



Shircliff Commercial Real Estate
5815 Cove Landing Rd, Unit 203
Burke, VA 22015

PETER MECHLIN
Cell 703-371-8419
pmechlin@uscomcom.com

DISCLAIMER: This information is deemed to be reliable or has been secured from sources we believe to be reliable; regardless there is no representation or warranty, expressed or implied, as to the accuracy of the information. All references are approximate, including age, sq. footage, income, and expenses. All parties should conduct their own independent investigations and rely solely on those results. The Owner and Shircliff Commercial Real Estate LLC reserve the right to withdraw or amend the offering at any time without notice to any party.