



1039

FOR LEASE

Harbour View Professional Center
1035-1039 Champions Way
Suffolk, VA

Perry Frazer

Executive Vice President
+1 757 228 1833
perry.frazer@colliers.com

Ricky Anderson

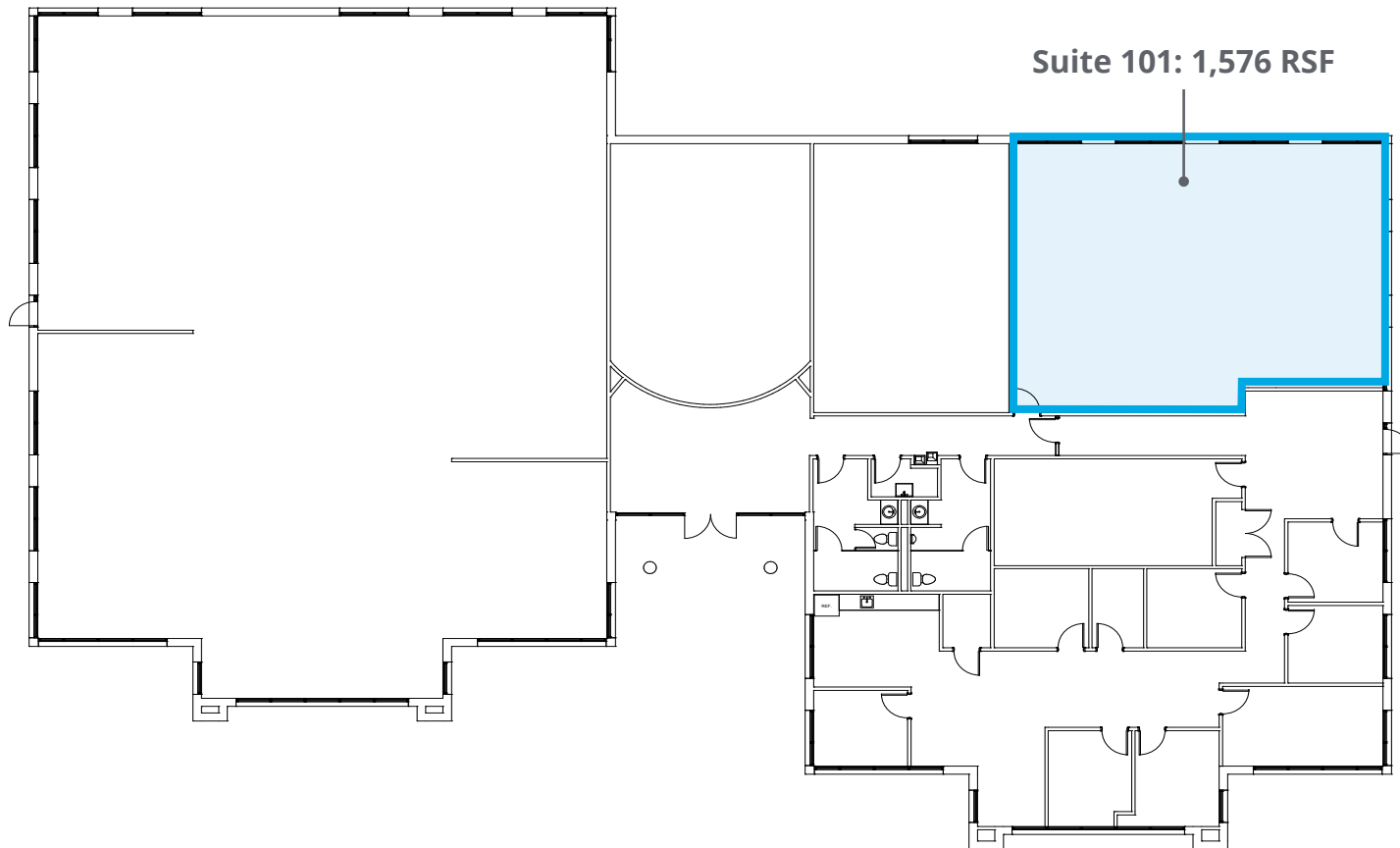
Executive Vice President
+1 757 217 1892
ricky.anderson@colliers.com

150 West Main Street
Suite 1100
Norfolk, VA 23510
P: +1 757 490 3300

Property Details

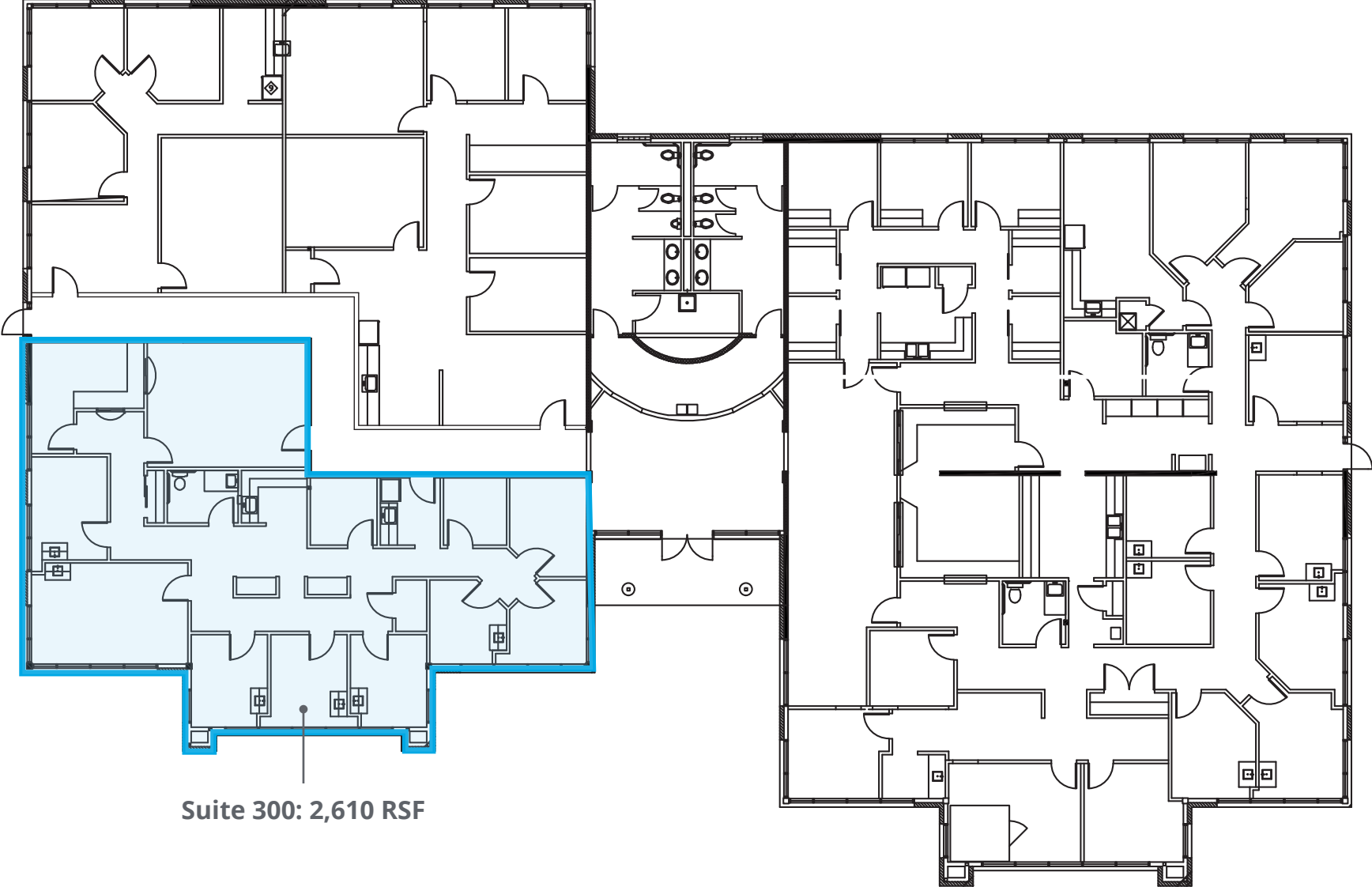
- Four building professional/medical office complex totaling 46,087 RSF
- Built in 2006 and located in the heart of Harbour View
- Just 1/4 mile to BonSecours Harbour View campus and 3/4 of a mile to Sentara Belle Harbour
- Locally owned and managed
- Core Factor: 10%
- CAM, taxes and insurance: \$5.25 PSF
- Lease Rate: \$17.00 PSF, NNN

Building 4 | 1039 Champions Way



Floor Plan

Building 3 | 1037 Champions Way



Suite 300: 2,610 RSF



150 West Main Street
Suite 1100
Norfolk, VA 23510
P: +1 757 490 3300

Perry Frazer
Executive Vice President
+1 757 228 1833
perry.frazer@colliers.com

Ricky Anderson
Executive Vice President
+ 1 757 217 1892
ricky.anderson@colliers.com



This document/email has been prepared by Colliers for advertising and general information only. Colliers makes no guarantees, representations or warranties of any kind, expressed or implied, regarding the information including, but not limited to, warranties of content, accuracy and reliability. Any interested party should undertake their own inquiries as to the accuracy of the information. Colliers excludes unequivocally all inferred or implied terms, conditions and warranties arising out of this document and excludes all liability for loss and damages arising there from. This publication is the copyrighted property of Colliers International Virginia, LLC and /or its licensor(s). © 2024. All rights reserved. This communication is not intended to cause or induce breach of an existing listing agreement.