

## EXTERNAL MEASUREMENTS



This detailed floor plan shows a 1,500 sq. ft. house with a central living area (32'4" x 7'6") and a large room (33'11" x 7'6"). The layout includes a kitchen (18'1" x 7'10"), a pantry (5'11" x 8'2"), a utility room (4'10" x 5'10"), a bathroom (5'10" x 3'5"), and three bedrooms (11'4" x 7'10", 11'3" x 7'10", and 11'3" x 7'10"). There are also two half-baths and a central hall. The house features four patios (Patio 1: 5'11" x 39'8", Patio 2: 5'11" x 39'8", Patio 3: 18'8" x 6'1", and Patio 4: 6'8" x 7'10") and two porches (Porch 1: 8'5" x 7'10", Porch 2: 8'10" x 7'3"). The total area is 1,500 sq. ft.

## EXTERNAL MEASUREMENTS

UTILITY (3)  
[AREA: 222]



Floor plan of a room with a hallway. The room is 15'6" wide and 31'10" deep. The hallway is 5'4" wide and 11'3" deep. The room has a door on the right wall and a window on the left wall. The hallway has a door on the right wall and a window on the left wall.

32'6"

47'7"

24'0"

7'2"

23'10"

3'10"

2'6"

6'8"

4'2"

2'1"

6'11"

8'8"

8'6"

0'4"

0'4"

ROOM  
AREA

ROOM (2)  
[AREA: 172]

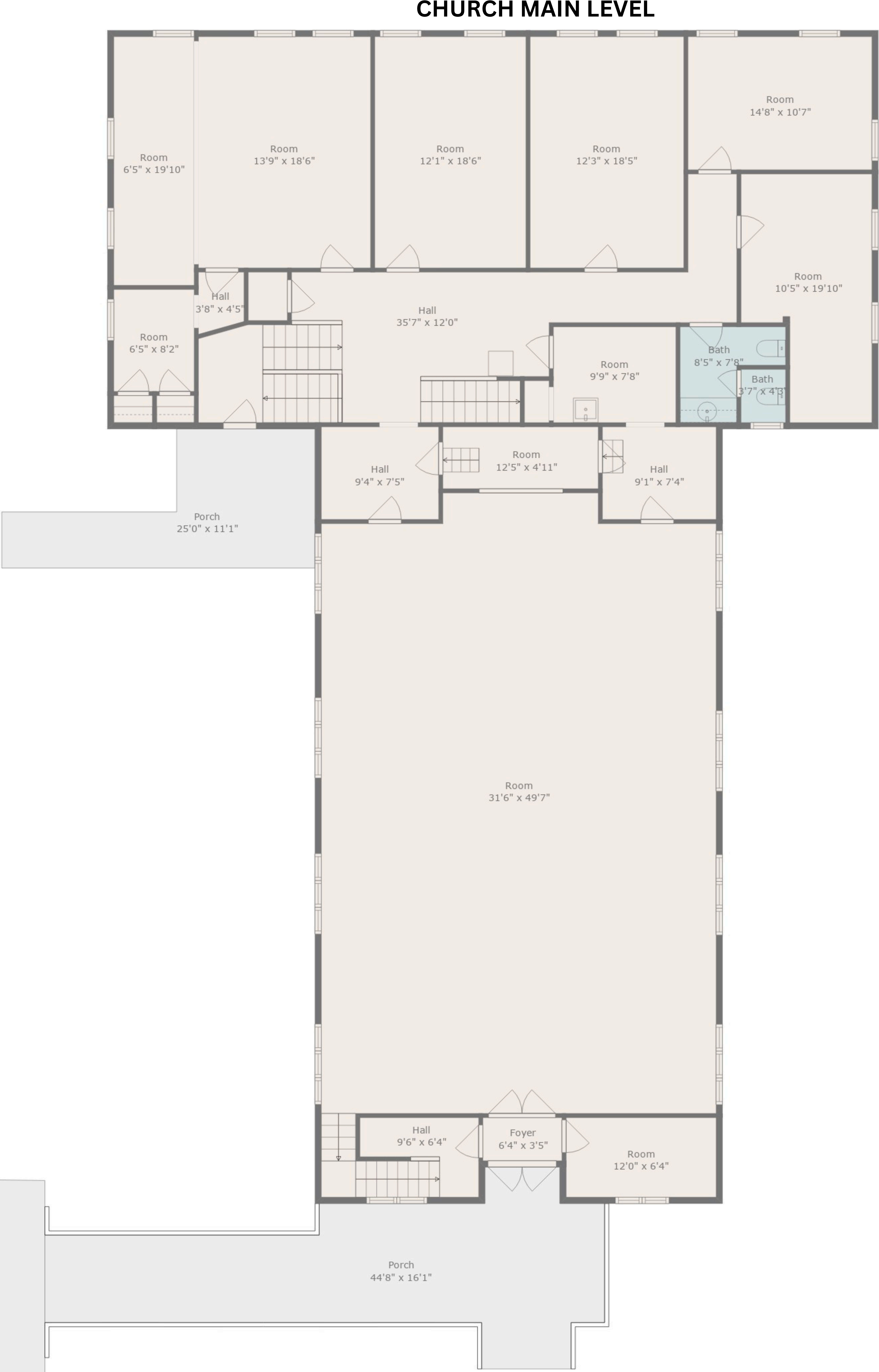
ROOM (3)  
[AREA: 45]

## CHURCH - Additional Floors



41 Tucker Rd | Black Mountain, NC 28711

INTERNAL MEASUREMENTS



ESTIMATED AREAS

TOTAL GLA: 6000 sq. ft. | TOTAL: 9978 sq. ft. | TOTAL ANNEX: 2968 sq. ft.

Basement: 1457 sq. ft. EXCLUDED 2389sq. ft

Church Main Level: 4048 sq. ft. EXCLUDED 1372 sq. ft TOTAL ANNEX: 2968 sq. ft.

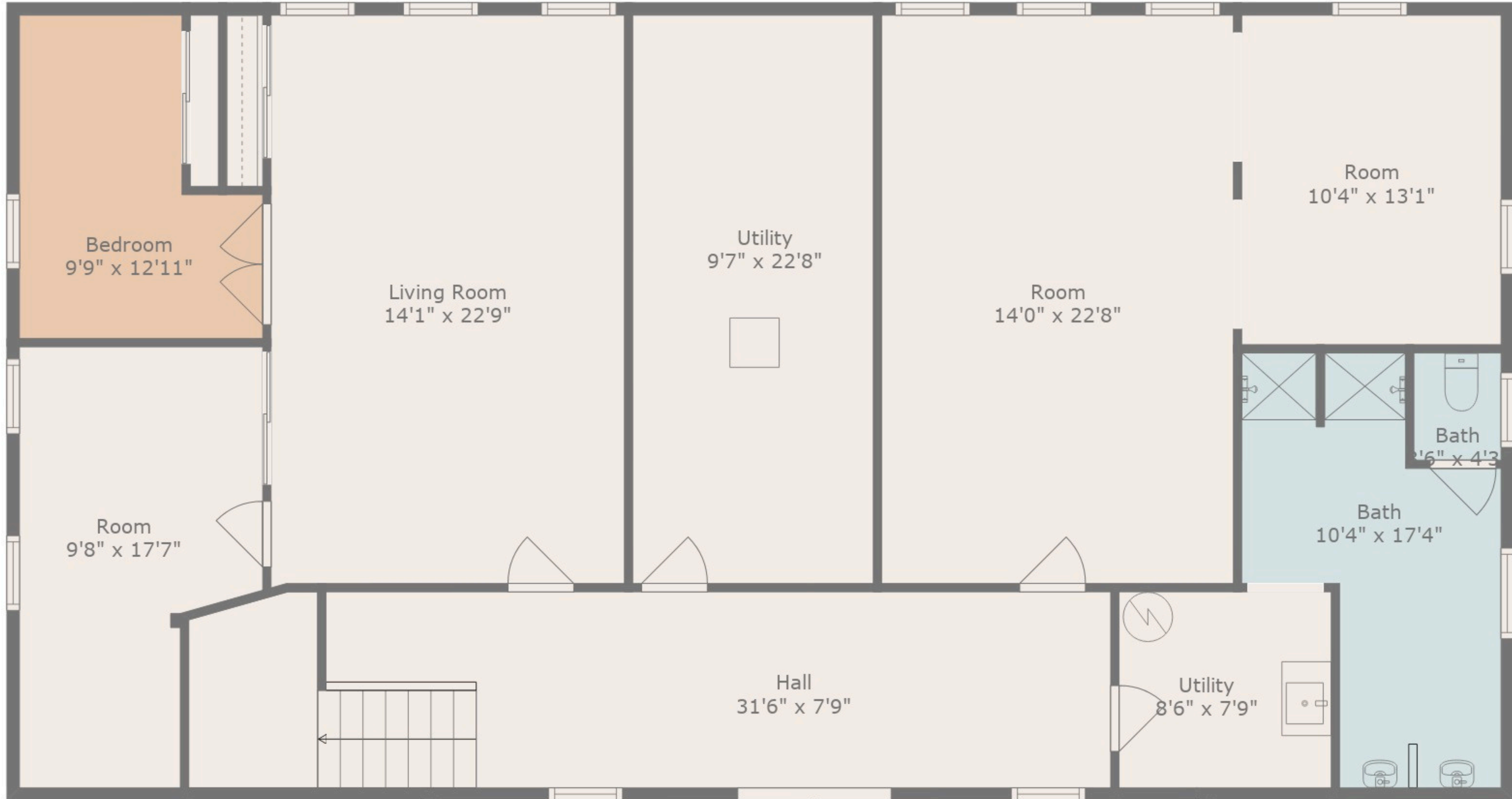
Floor 2: 495 sq. ft. EXCLUDED 1765 sq. ft



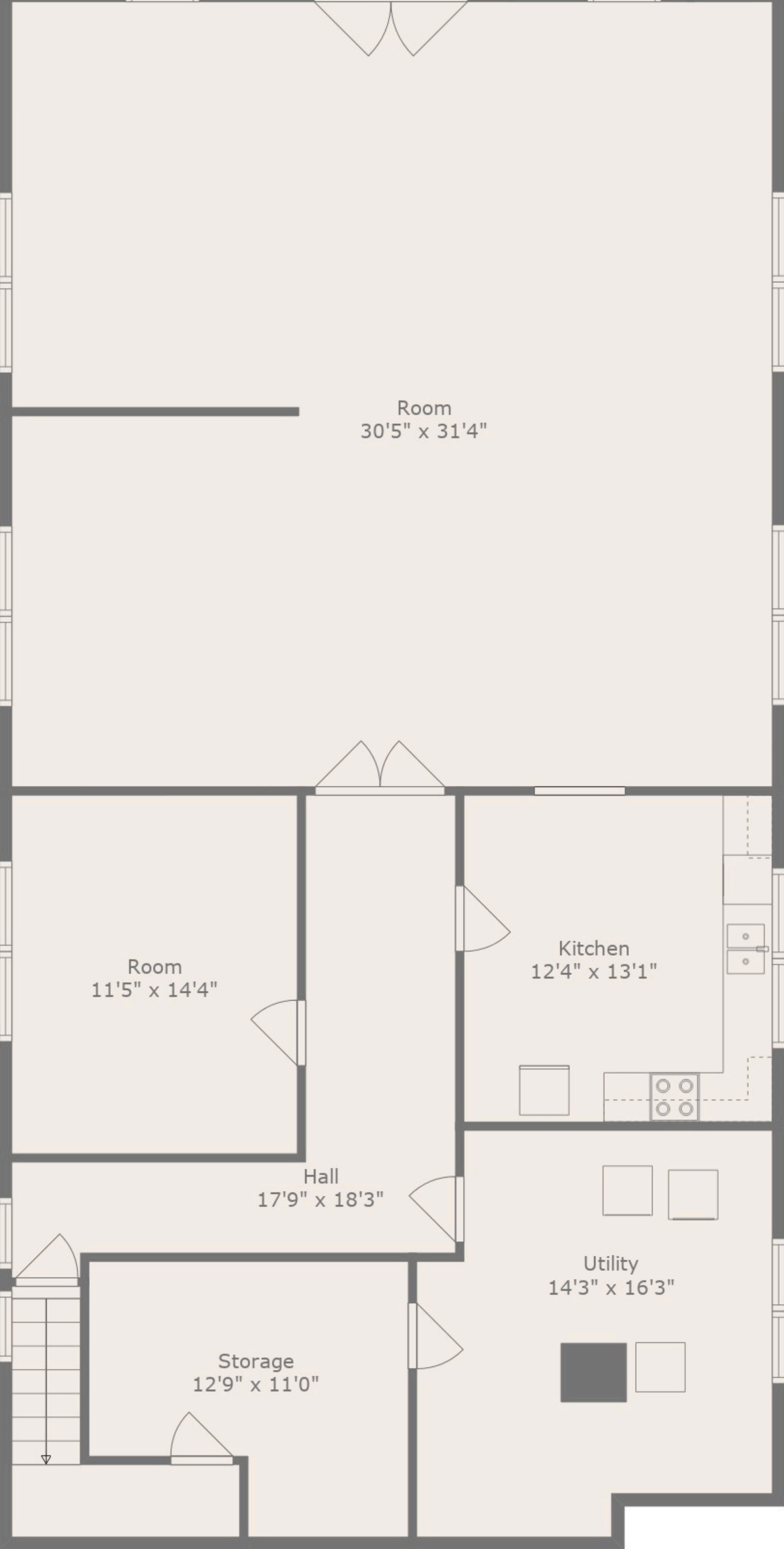
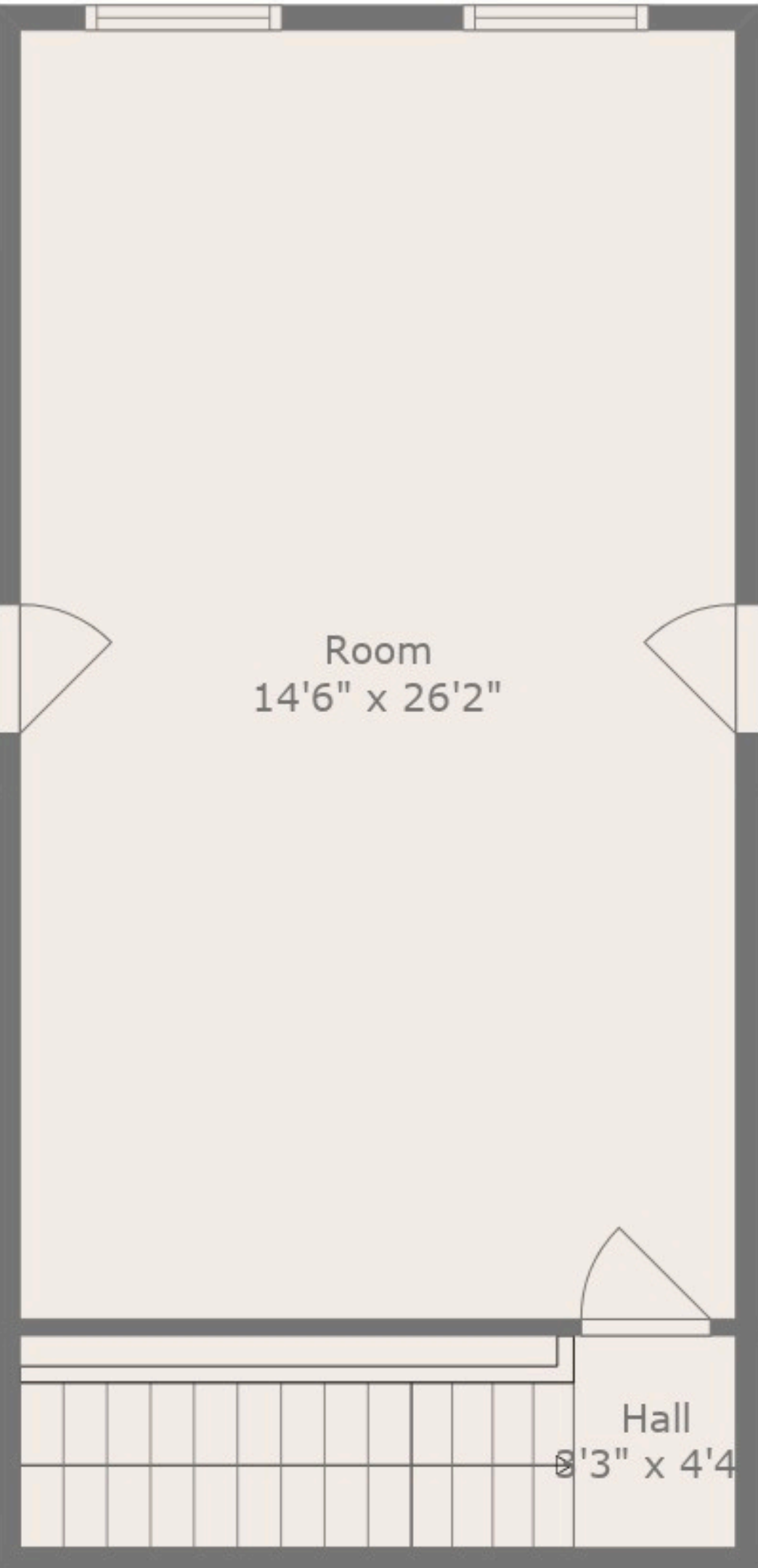
41 Tucker Rd | Black Mountain, NC 28711

INTERNAL MEASUREMENTS

BASEMENT



FLOOR 2



ESTIMATED AREAS

TOTAL GLA: 6000 sq. ft. | TOTAL: 9978 sq. ft. | TOTAL ANNEX: 2968 sq. ft.

Basement: 1457 sq. ft. EXCLUDED 2389sq. ft

Church Main Level: 4048 sq. ft. EXCLUDED 1372 sq. ft TOTAL ANNEX: 2968 sq. ft.

Floor 2: 495 sq. ft. EXCLUDED 1765 sq. ft