

LORTEX BUILDING - FREE STANDING OFFICE FOR LEASE

113 SW 8th Street | Des Moines, Iowa



OVERVIEW

Located along the MLK corridor near the new soccer stadium, Principal Park and the new Market District Park, the Lortex would be the perfect location for a visible office. The building contains 20,000 SF of available space for lease. Surface parking available. Potential build-to-suit.

DEMOGRAPHICS

| ESRI 2025 | 3 mile | 5 mile |
|----------------|----------|----------|
| Population | 100,507 | 210,146 |
| Avg. HH Income | \$82,799 | \$88,180 |

FEATURES

- 20,000 SF with 4 to 1 surface parking
- For Lease
- Could be a Build to Suit
- High visibility office
- 10,000 SF per floor (2 floors)

FOR MORE INFORMATION:

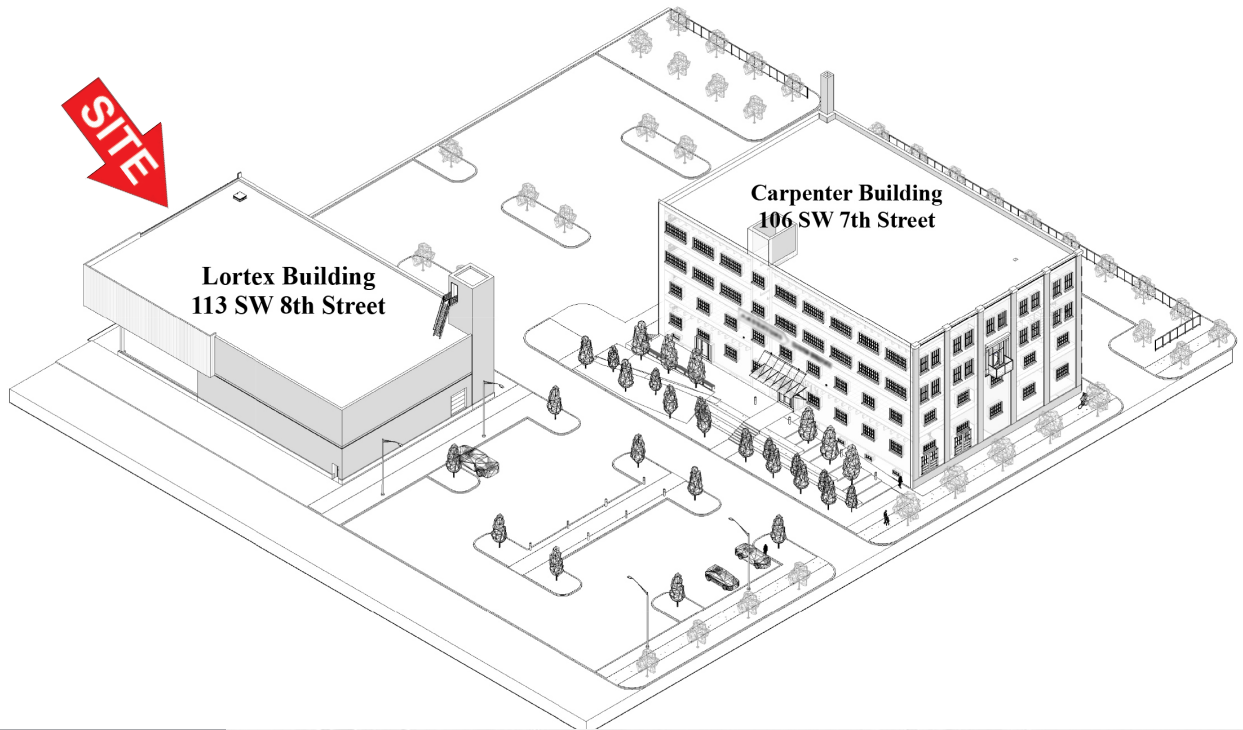
Tim Rypma | Cell: 515-419-1445
Email: tim@buyersrealtyinc.com



4350 Westown Parkway Suite 100 West Des Moines, IA 50266
www.buyersrealtyinc.com 515-277-4000

FREE STANDING OFFICE FOR LEASE

113 SW 8th Street | Des Moines, Iowa

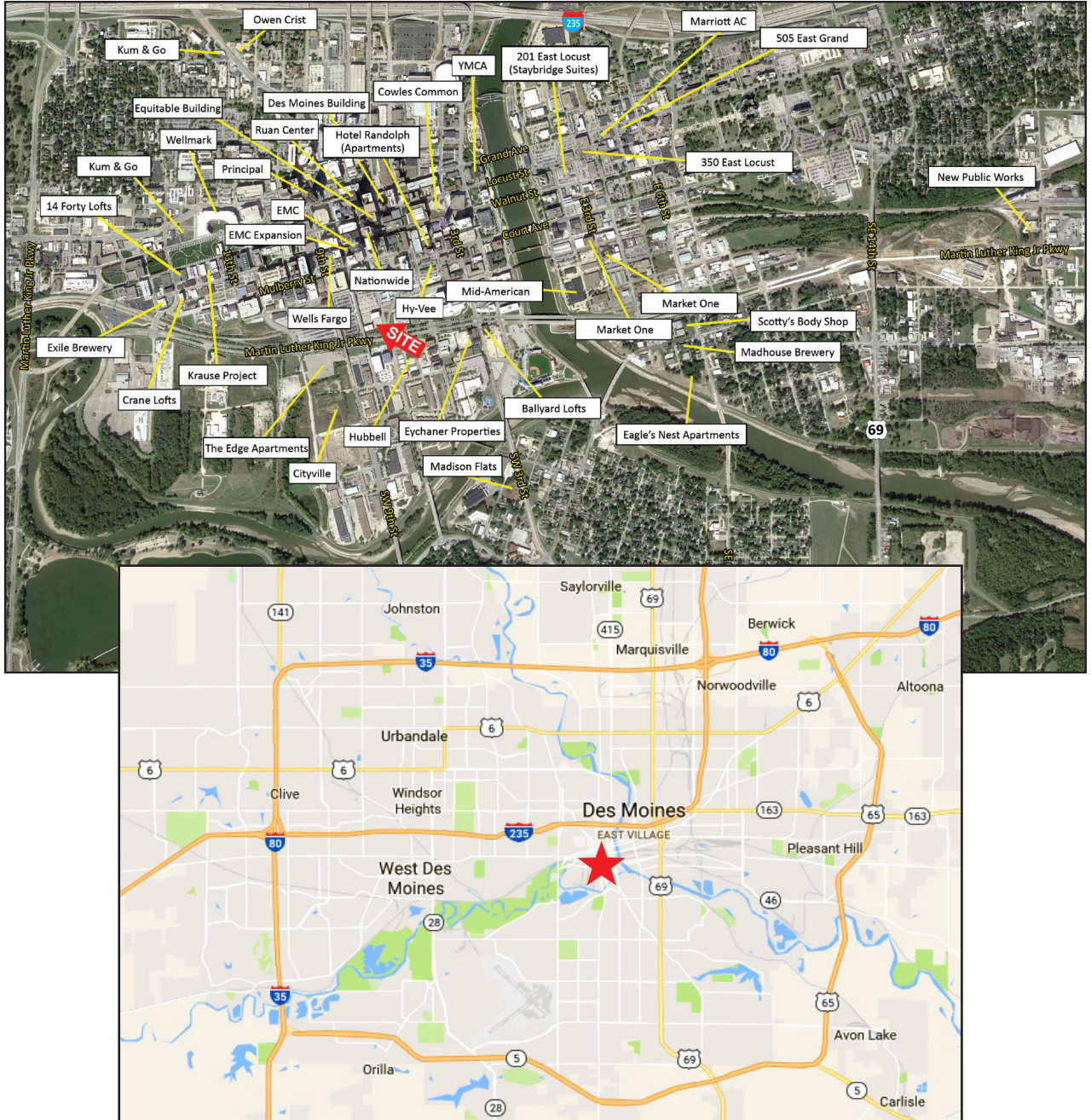


PARKING

4350 Westown Parkway Suite 100 West Des Moines, IA 50266
www.buyersrealtyinc.com 515-277-4000

FREE STANDING OFFICE FOR LEASE

113 SW 8th Street | Des Moines, Iowa



FOR MORE INFORMATION:

Tim Rypma | Cell: 515-419-1445

Email: tim@buyersrealtyinc.com

A MEMBER OF
CHAINLINKS
RETAIL ADVISORS

**BUYERS
REALTY**

4350 Westown Parkway Suite 100 West Des Moines, IA 50266
www.buyersrealtyinc.com 515-277-4000