

# FOR LEASE

## Pacific Plaza

22315 Hwy 99, Edmonds, WA 98026



PACIFIC BRIDGE | [www.pacificbridgere.com](http://www.pacificbridgere.com) | 425.429.6551 | [info@pacificbridgere.com](mailto:info@pacificbridgere.com)





# PROPERTY SUMMARY

**Pacific Plaza** is a retail center located directly off of Hwy 99 (39,000+ cars per day) in Edmonds, Washington. Renovated in 2022, this retail center promotes sustainability by providing a high level of efficiency that reduces consumption of energy, water and other resources minimizing its carbon footprint; benefiting the environment while providing occupants more affordable tenancy.

# LEASE INFORMATION

<b>Location</b>	22315 Hwy 99, Edmonds, WA 98026
<b>County</b>	Snohomish
<b>SF Available ±</b>	1,375 - 6,500
<b>Lease Type</b>	NNN
<b>Lease Rate</b>	Contact Listing Agent

# PROPERTY HIGHLIGHTS

- Modern and Newly Remodeled Located on Hwy 99 Minutes From I-5
- Build to Suit Options Available for Single Tenant Use
- Turn Key Unit: Former Chiropractic Office
- New Monument Sign Coming Spring 2024 (pg 3)
- 90 Uncovered Parking Stalls
- TI Packages Available for Qualified Tenants

# CURRENT TENANTS

Kocochi, YGF Malatang, KidStrong





Leased

Available

Leased

Leased

Leased

Available

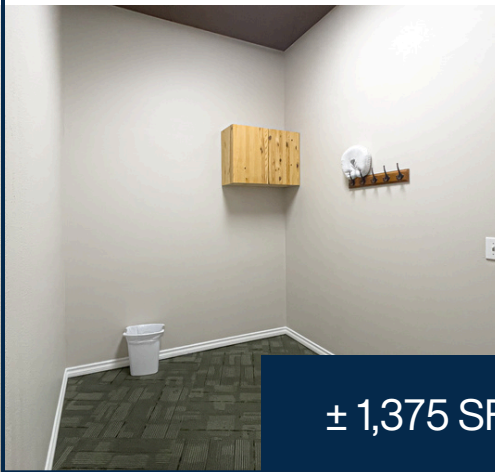
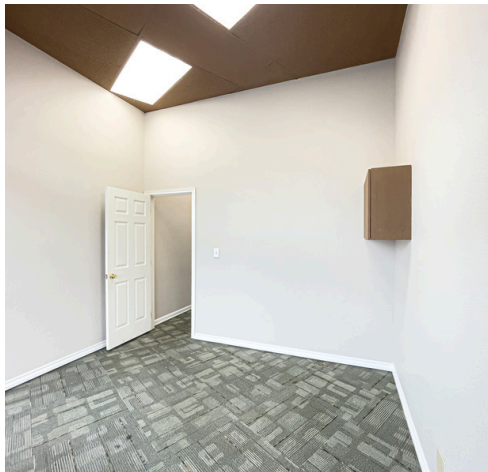
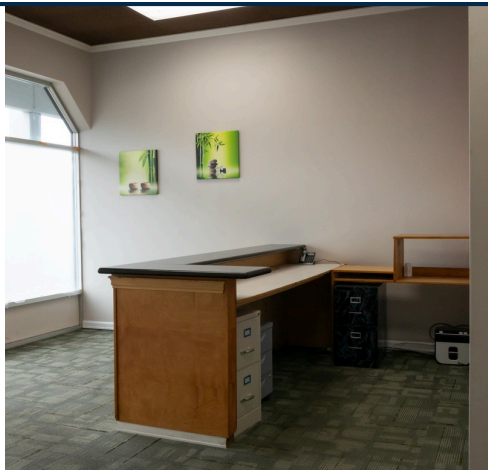
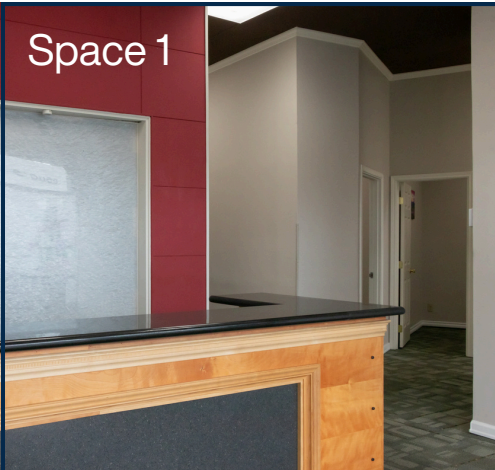
Leased

New Monument Sign Coming Soon



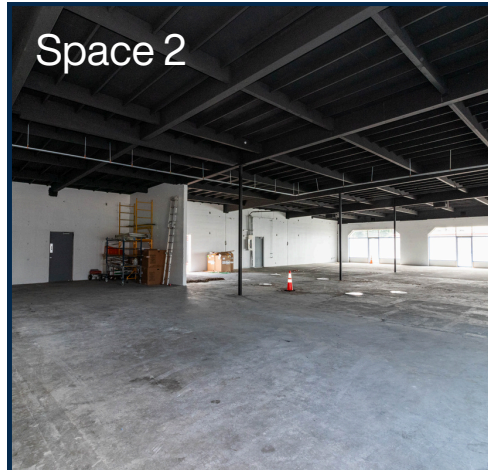


Space 1



± 1,375 SF Available

Space 2



± 6,500 SF Available



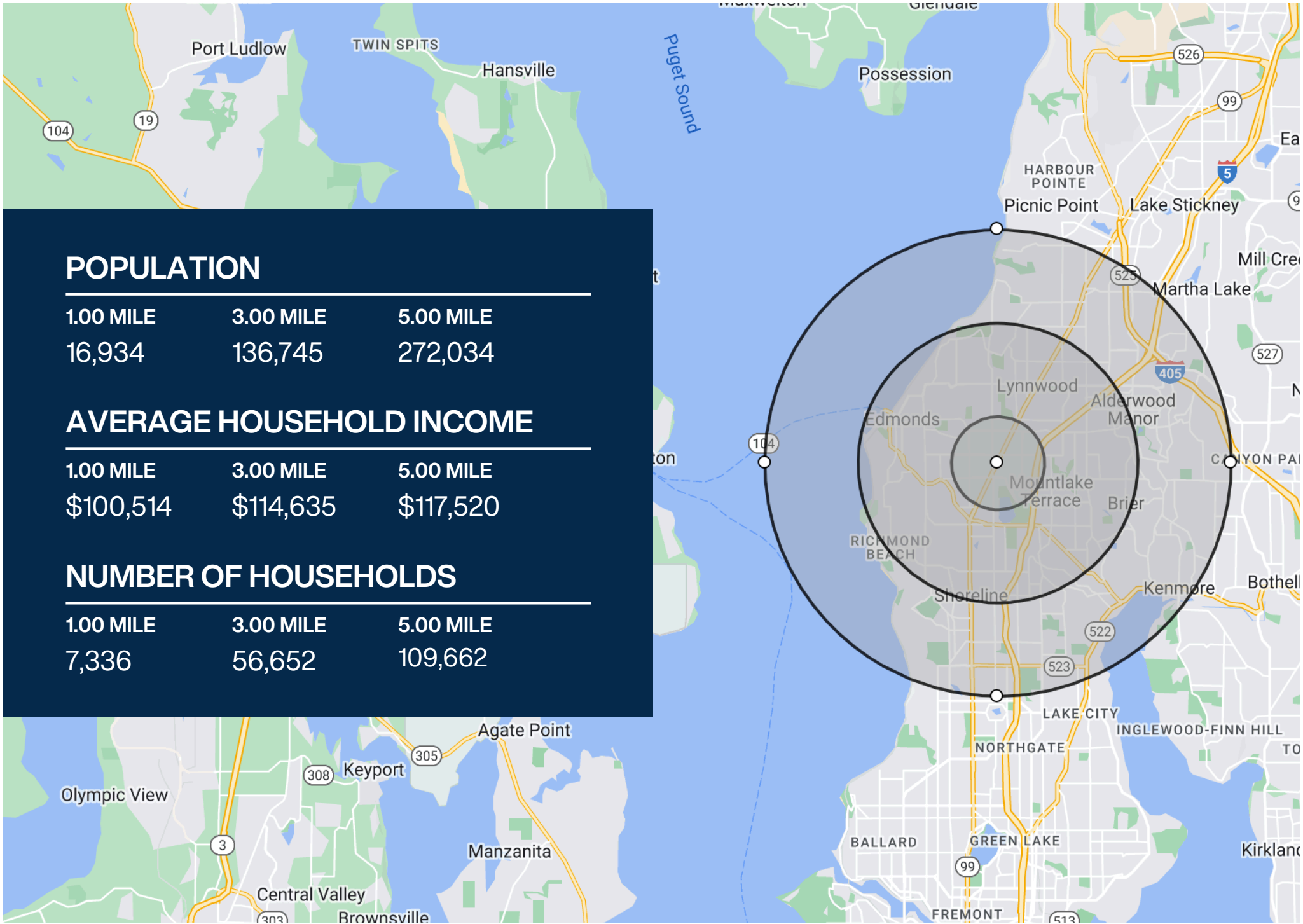
Edmonds-Woodway  
High School



Pacific Plaza







## POPULATION

1.00 MILE	3.00 MILE	5.00 MILE
16,934	136,745	272,034

## AVERAGE HOUSEHOLD INCOME

1.00 MILE	3.00 MILE	5.00 MILE
\$100,514	\$114,635	\$117,520

## NUMBER OF HOUSEHOLDS

1.00 MILE	3.00 MILE	5.00 MILE
7,336	56,652	109,662



# PACIFIC PLAZA

Exclusively Marketed By:  
PACIFIC BRIDGE

The information contained in this marketing is proprietary. This marketing flyer is intended to be reviewed only by the party receiving it from Pacific Bridge and should not be made available to any other party without the written consent of Pacific Bridge. The information contained herein is not substitute for a thorough due diligence investigation. Pacific Bridge has not made any investigation, and makes no warranty or representation with respect to the financial information, the future financial performance of the Property, the size and square footage of the Property, the improvements, the zoning of the Property, the presence or absence of contaminating substances, PCBs or asbestos, the compliance with local, state and federal regulations, the physical condition of the improvements thereon, or financial condition or business prospects of any tenant. The information contained in this marketing flyer has been obtained from sources we believe reliable; however, Pacific Bridge has not verified, and will not verify, any of the information contained herein, nor has Pacific Bridge conducted any investigation regarding these matters and makes no warranty or representation regarding the accuracy or completeness of the information provided. This marketing flyer is submitted subject to the possibility of errors, omissions and or change of price, rental rates or other conditions, prior sale, lease or financing, or withdrawal without notice. Pacific Bridge and the Property Ownership have included projections, opinions, assumptions or estimates for example only, and they may not represent the current or future performance of the Property. All potential tenants must take appropriate measures to verify all of the information set forth herein. Prospective tenants shall be responsible for their costs and expenses of investigating the subject property.