

LAND FOR COMMERCIAL DEVELOPMENT AVAILABLE FOR SALE

22.43 ACRES OF COMMERCIAL LAND INCLUDING PADS

LOCATED AT SLATTEN RANCH ROAD, ANTIOCH, EAST CONTRA COSTA COUNTY, CA

CALL FOR PRICING

This commercial opportunity is immediately adjacent to the 440,000 SF Slatten Ranch shopping center in Brentwood/Antioch's highway-oriented retail district.



JCPenney

BEST BUY

PAD

PAD

PAD

SITE

FOR SALE

Slatten Ranch Rd

CA 4



John Sechser
Managing Director
East Bay Retail Services
925-296-3368
john.sechser@tricommercial.com
LIC: #00829597

Ed Del Beccaro
Executive Vice President
San Francisco Bay Area
Regional Manager
925-296-3333
ed.delbeccaro@tricommercial.com
LIC: #00642167



LAND FOR COMMERCIAL DEVELOPMENT, SLATTEN RANCH

22.43 ACRES **COMMERCIAL LAND**
AVAILABLE FOR SALE

- A potential commercial development is possible on 22.43 acres at the Gateway to Slatten Ranch and Highway 4 at the border of Brentwood and Antioch, Ca.
- Prime Retail Corridor with Neighboring tenants serving all of East Contra Costa County, including, Target/CVS, Best Buy, Bed Bath and Beyond, JC Penney, Barnes & Noble, Hobby Lobby, along with Petsmart, Kirkland's, Office Depot, Old Navy, Winco, and Walgreens.
- 42,000 A.D.T. on Lone Tree Way. 51,000 A.D.T. on HWY 4. Traffic counts at Lone Tree Way and Highway 4 exceed 90,000 A.D.T..
- Over 110,000 people in 3 miles.
- Seeking users/ buyers for retail, medical, financial, gas, entertainment, employment uses, logistics and hospitality uses.



John Sechser

925-296-3368

john.sechser@tricommercial.com

LIC: #00829597

Ed Del Beccaro

925-296-3333

ed.delbeccaro@tricommercial.com

LIC: #00642167

LAND FOR COMMERCIAL DEVELOPMENT, SLATTEN RANCH

22.43 ACRES **COMMERCIAL LAND**
AVAILABLE FOR SALE

POSSIBLE USES

Manufacturing/Industrial
Medical Office
Senior Care Facility
Sports Facility, Food
Gas and Car Wash



POSSIBLE USES

Hotels
Neighborhood Shopping (Grocery)
Pad Restaurants
Gas and Car Wash
Entertainment



POSSIBLE USES

Consumer Financial Offices
Fast Food Restaurants
Pad Restaurants
Gas and Car Wash
Urgent Care



John Sechser

925-296-3368

john.sechser@tricommercial.com

LIC: #00829597

Ed Del Beccaro

925-296-3333

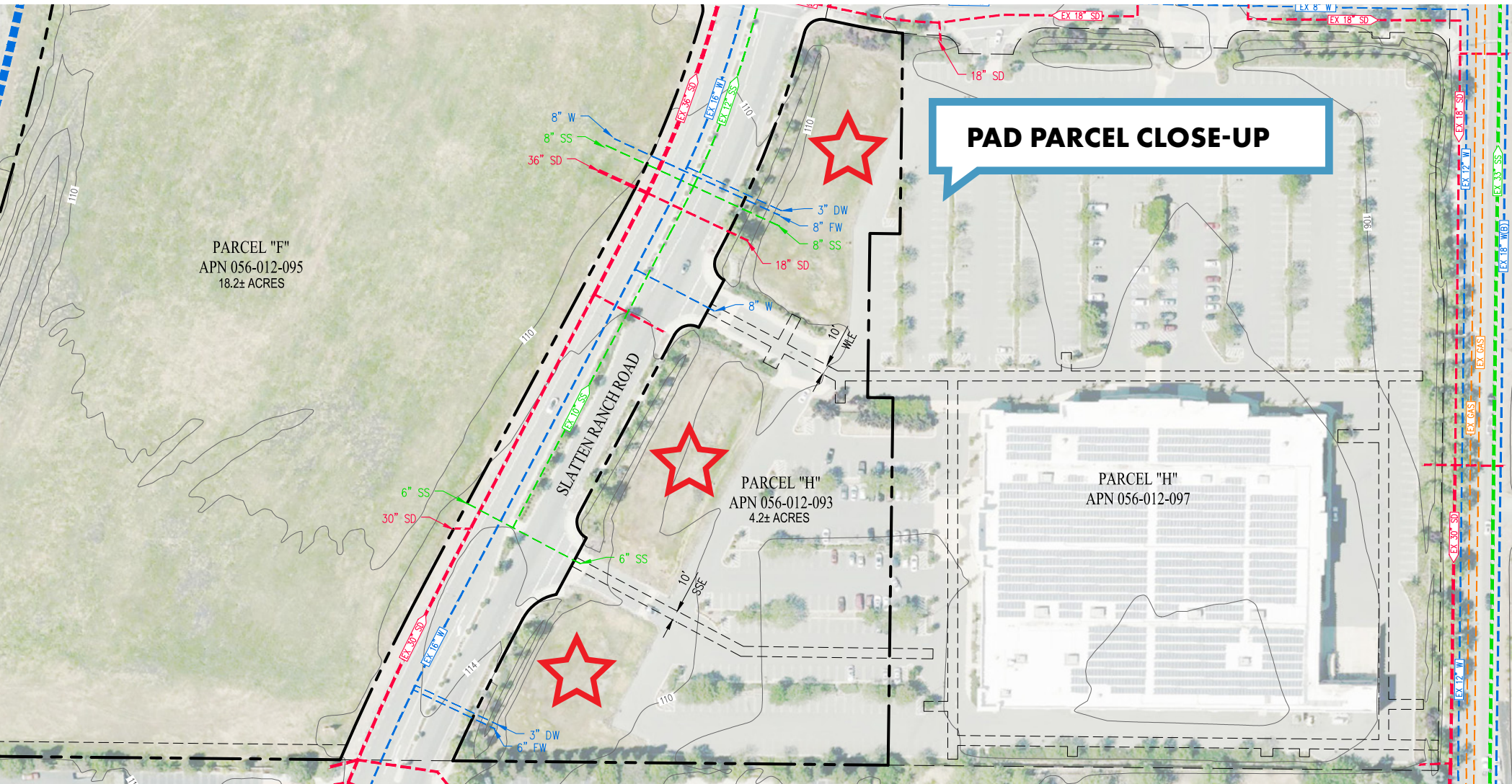
ed.delbeccaro@tricommercial.com

LIC: #00642167

TRICORFAC
INTERNATIONAL
COMMERCIAL
www.tricommercial.com

LAND FOR COMMERCIAL DEVELOPMENT, SLATTEN RANCH

22.43 ACRES **COMMERCIAL LAND**
AVAILABLE FOR SALE



John Sechser
925-296-3368
john.sechser@tricommercial.com
LIC: #00829597

Ed Del Beccaro
925-296-3333
ed.delbeccaro@tricommercial.com
LIC: #00642167

LAND FOR COMMERCIAL DEVELOPMENT, SLATTEN RANCH

22.43 ACRES **COMMERCIAL LAND**
AVAILABLE FOR SALE



Antioch Ca. is the 3rd largest City in Contra Costa County, located in the East Bay region of the **San Francisco Bay Area** along the Sacramento-San Joaquin River Delta.

1 Mile Population: 10,395
5 Mile Population: 190,849
10 Mile Population: 298,839

John Sechser

925-296-3368

john.sechser@tricommercial.com

LIC: #00829597

Ed Del Beccaro

925-296-3333

ed.delbeccaro@tricommercial.com

LIC: #00642167

TRICORFAC
INTERNATIONAL
COMMERCIAL
www.tricommercial.com

LAND FOR COMMERCIAL DEVELOPMENT, SLATTEN RANCH

22.43 ACRES **COMMERCIAL LAND**
AVAILABLE FOR SALE



John Sechser
925-296-3368
john.sechser@tricommercial.com
LIC: #00829597

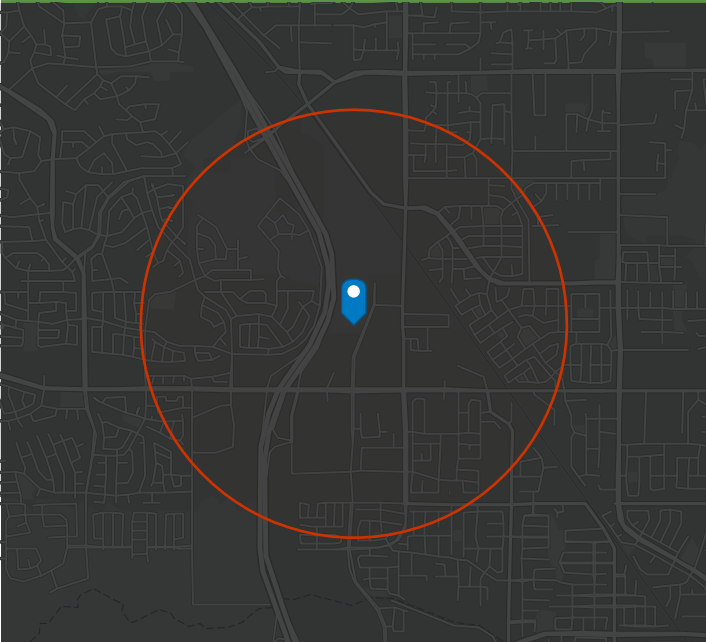
Ed Del Beccaro
925-296-3333
ed.delbeccaro@tricommercial.com
LIC: #00642167

LAND FOR COMMERCIAL DEVELOPMENT, SLATTEN RANCH

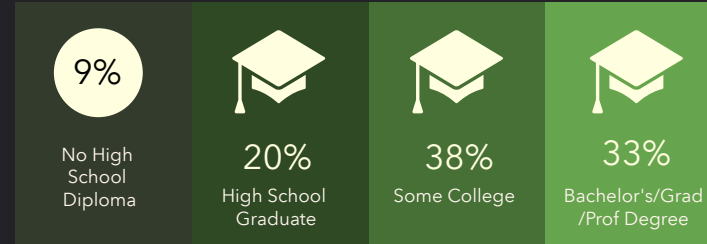
**22.43 ACRES COMMERCIAL LAND
AVAILABLE FOR SALE**

DEMOGRAPHIC PROFILE

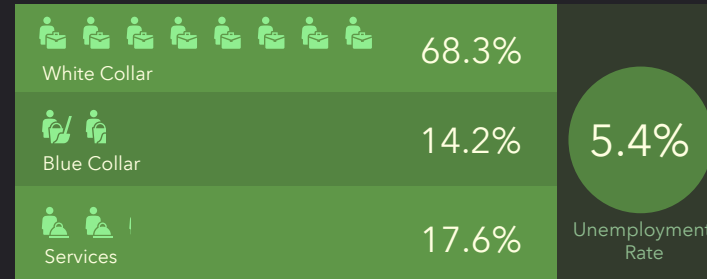
Ring of 1 mile



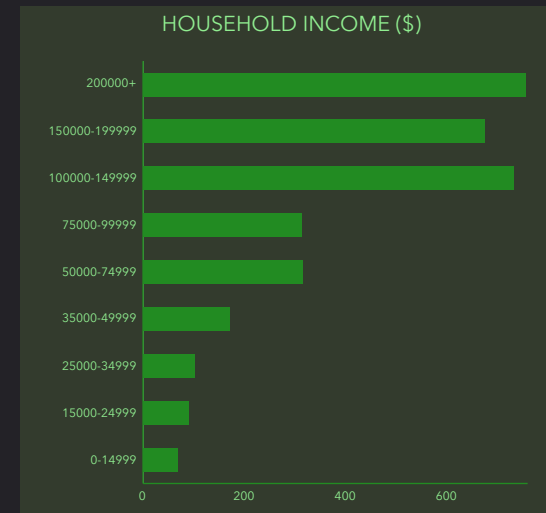
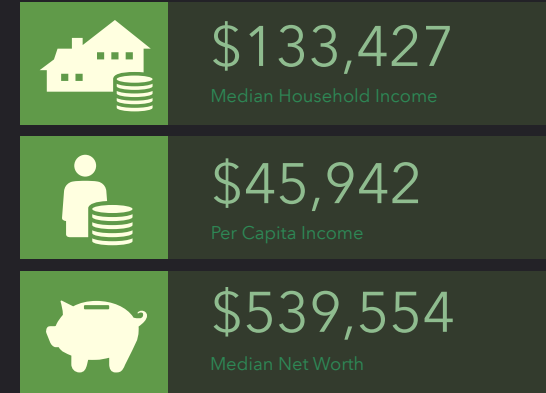
EDUCATION



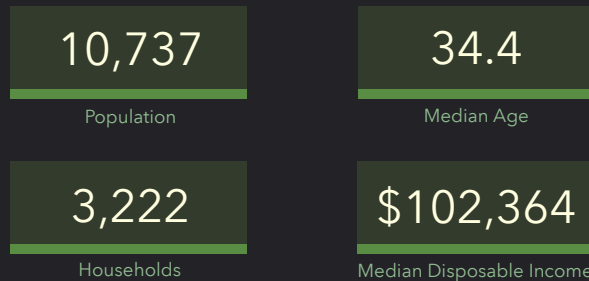
EMPLOYMENT



INCOME



KEY FACTS



This infographic contains data provided by Esri. The vintage of the data is 2021, 2026. © 2022 Esri

John Sechser
925-296-3368
john.sechser@tricommercial.com
LIC: #00829597

Ed Del Beccaro
925-296-3333
ed.delbeccaro@tricommercial.com
LIC: #00642167

