

# FOR SALE

## 9.3± ACRES INDUSTRIAL LAND

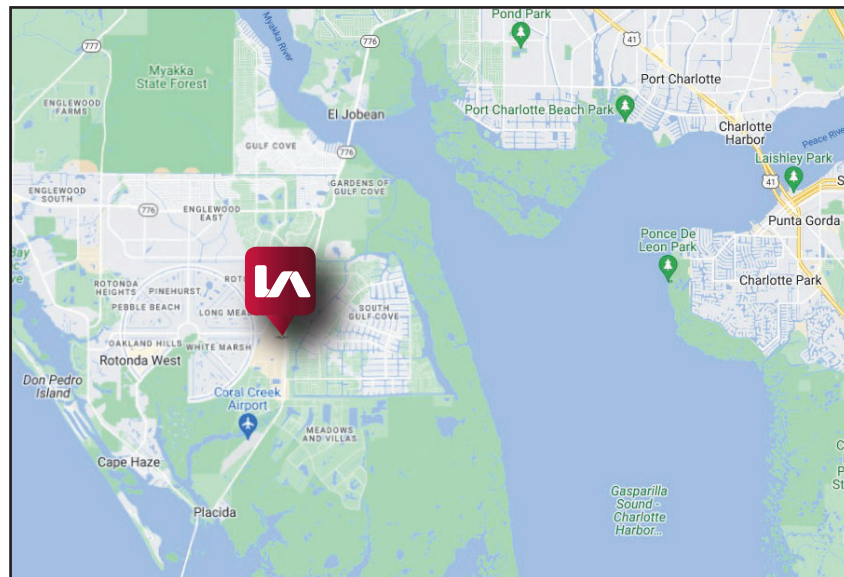
5331 - 5351 WOODFIELD ROAD, PLACIDA, FL 33946



- **LAND SIZE:** 9.3± AC
- **SALE PRICE:** \$2,800,000
- **ZONING:** II (Light Industrial)

### PROPERTY FEATURES

- Unique Opportunity to Develop a RV / Boat Storage Facility in a High-Demand Area
- Conveniently Located Between Downtown Punta Gorda & Boca Grande
- Property has been Fully Mitigated with EPA Studies Finished
- Completed Architectural Plans Available



Please Contact:

**Gary Barlow**  
Director of Land

📞 **239.877.4980**

✉ [gbarlow@lee-associates.com](mailto:gbarlow@lee-associates.com)

All information furnished regarding property for sale, rental or financing is from sources deemed reliable, but no warranty or representation is made to the accuracy thereof and same is subject to errors, omissions, change of price, or other conditions prior to sale, lease or financing or withdrawal without notice. No liability of any kind is to be imposed on the broker herein.

YOUR LOCAL MARKET **EXPERT**

7400 Trail Boulevard, Suite 101 | Naples, Florida 34108 | Lee-FL.com

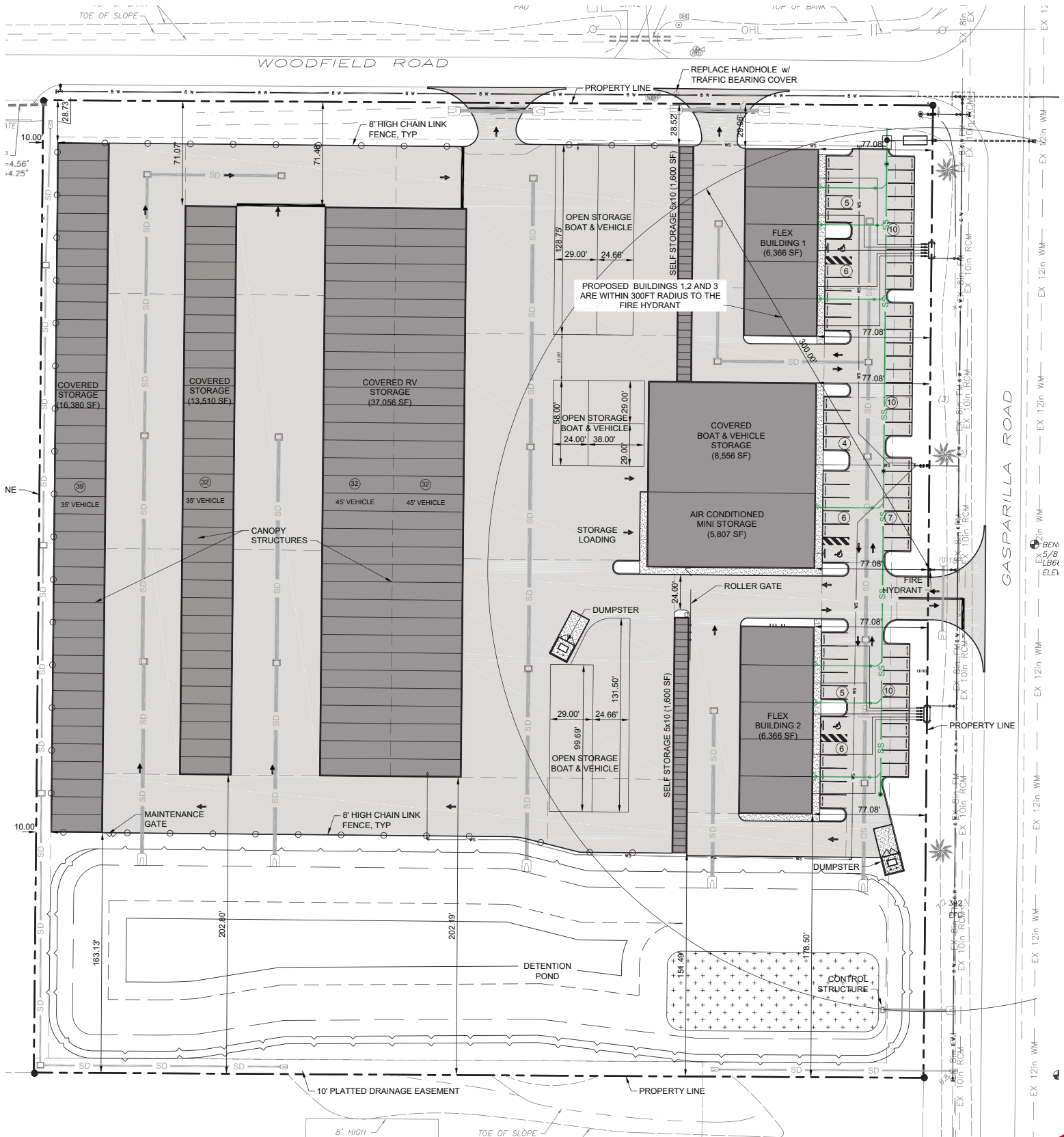


# FOR SALE

## 9.3± ACRES INDUSTRIAL LAND

5331 - 5351 WOODFIELD ROAD, PLACIDA, FL 33946

### POTENTIAL SITE PLAN



YOUR LOCAL MARKET EXPERT

7400 Trail Boulevard, Suite 101 | Naples, Florida 34108 | Lee-FL.com



# FOR SALE

## 9.3± ACRES INDUSTRIAL LAND

5331 - 5351 WOODFIELD ROAD, PLACIDA, FL 33946

**LEE & ASSOCIATES**

COMMERCIAL REAL ESTATE SERVICES



YOUR LOCAL MARKET **EXPERT**

7400 Trail Boulevard, Suite 101 | Naples, Florida 34108 | Lee-FL.com

