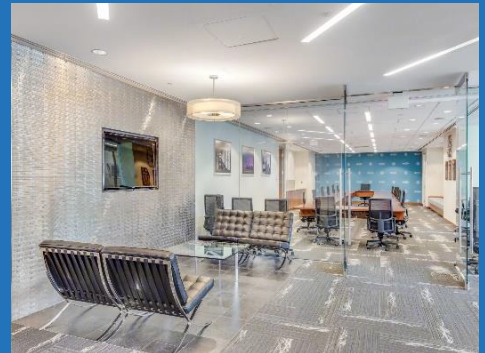
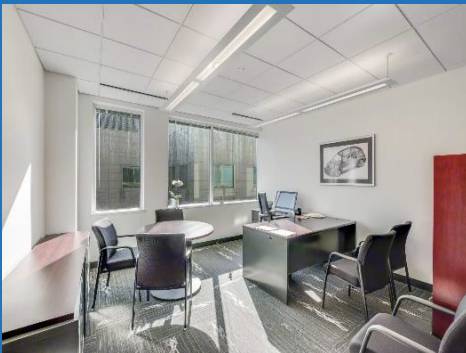


25 MASSACHUSETTS AVE NW, WASHINGTON, DC 20001

## SUBLEASE OPORTUNITY IN THE HEART OF WASHINGTON, DC



**SUITE 800**  
2,500 - 13,746 RSF

**RATE**  
Negotiable

**AVAILABILITY**  
60 Days

[Click Here to view  
virtual tour!](#)

### FEATURES



Large Conference  
Amenity



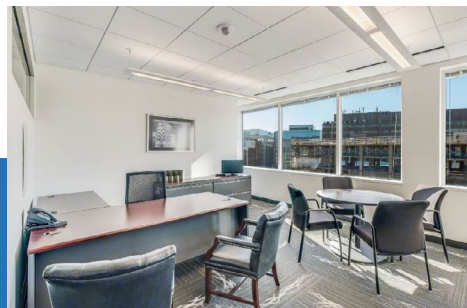
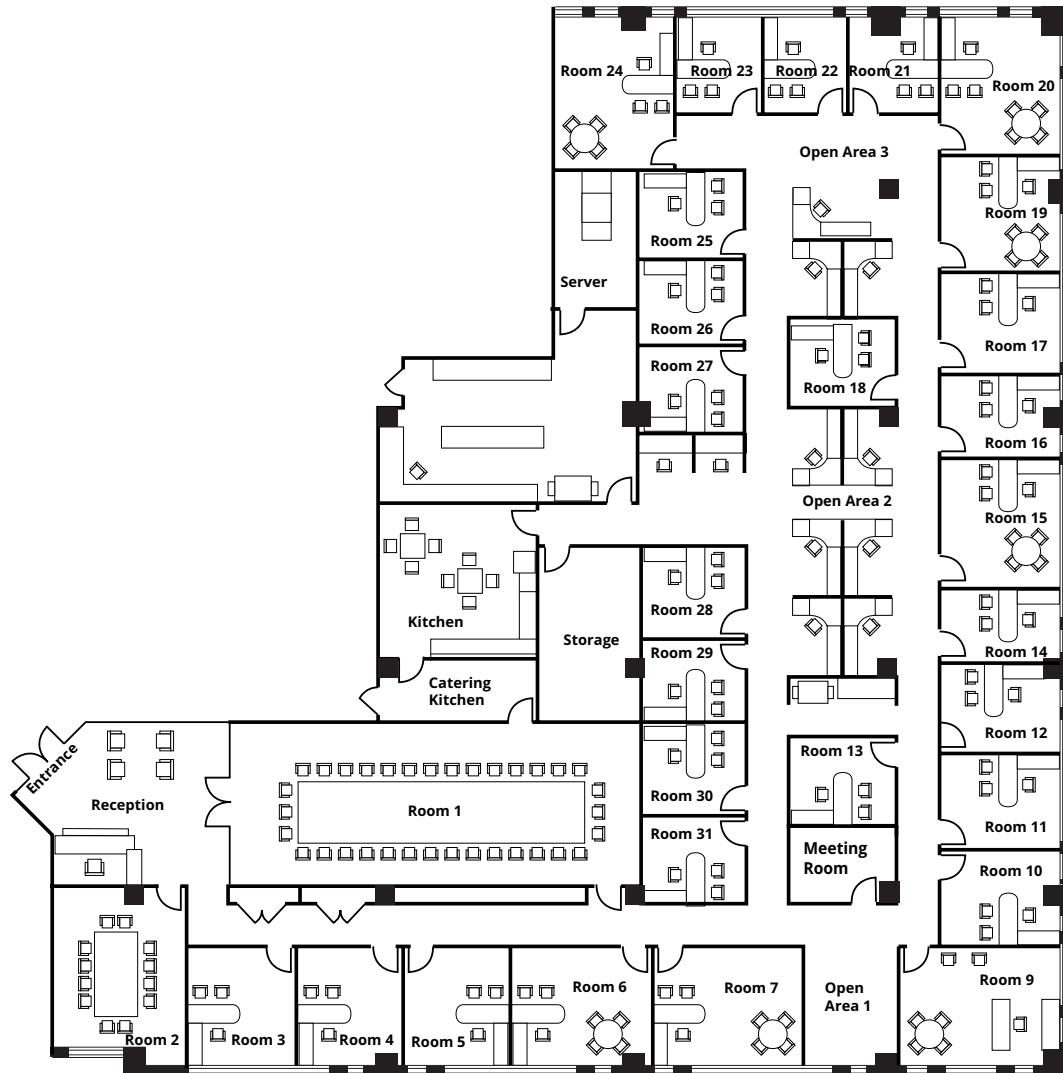
Fitness Center



Outdoor Courtyard

- ▶ Plug & Play Ready
- ▶ 12 Workstations w/ Dividers
- ▶ 27 Private Offices
- ▶ Large Supply Room
- ▶ Large Training /Conference Room
- ▶ 2 Meeting Rooms
- ▶ 1 Catering Kitchen
- ▶ Large Kitchen Area
- ▶ Reception/Waiting Area w/ Double Glass Door Entry

25 MASSACHUSETTS AVE NW, WASHINGTON, DC 20001



FOR INFORMATION OR INQUIRIES:

**Brian Pashkoff**

202.706.6204  
brian.pashkoff@  
transwestern.com

**Chris Fuldner**

202.627.1746  
chris.fuldner@  
transwestern.com

 **TRANSWESTERN**

1717 K Street NW, Suite 1000, Washington, DC 20006  
202.775.7000 | transwestern.com