

102,558 SF AVAILABLE



# 4265 TRADE CENTER

GRAPEVINE, TX 75211 | BUILDING G

## PROPERTY DETAILS

- Total Available SF:** 102,558 SF
- Divisible to:** 102,558 SF
- Office:** 3,372 SF (total)
- Structural Clear Height:** 30'
- Existing Power:** 600 Amps: 277/480 volt - 3 phase
- Dock High Doors:** 15 - 9' x 10'
- Oversize Ramp Door:** 1 - 14' x 16'
- Dock Levelers:** 5
- Bay Size:** 50' wide x 50' deep
- Dimensions:** 350' wide x 290' deep
- Truck Court Depth:** 130' deep concrete truck apron
- Car Parking Spaces:** 270 building total
- Year Built:** 2003
- Construction Type:** Concrete tilt-wall construction
- Configuration:** Rear load
- Sprinkler:** ESFR



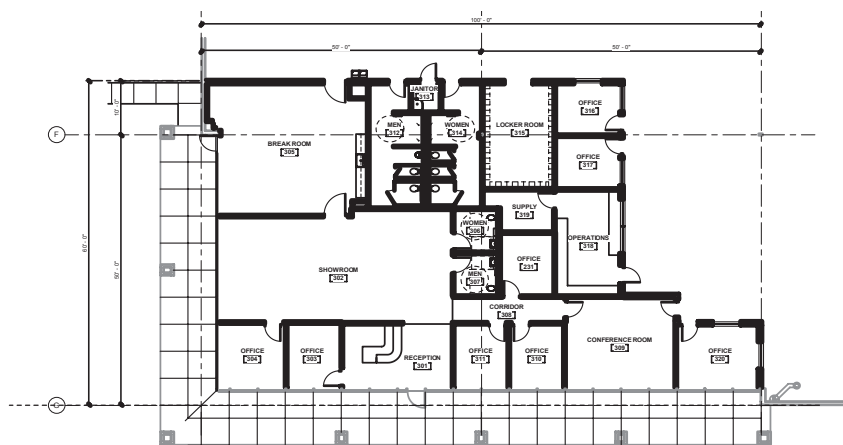
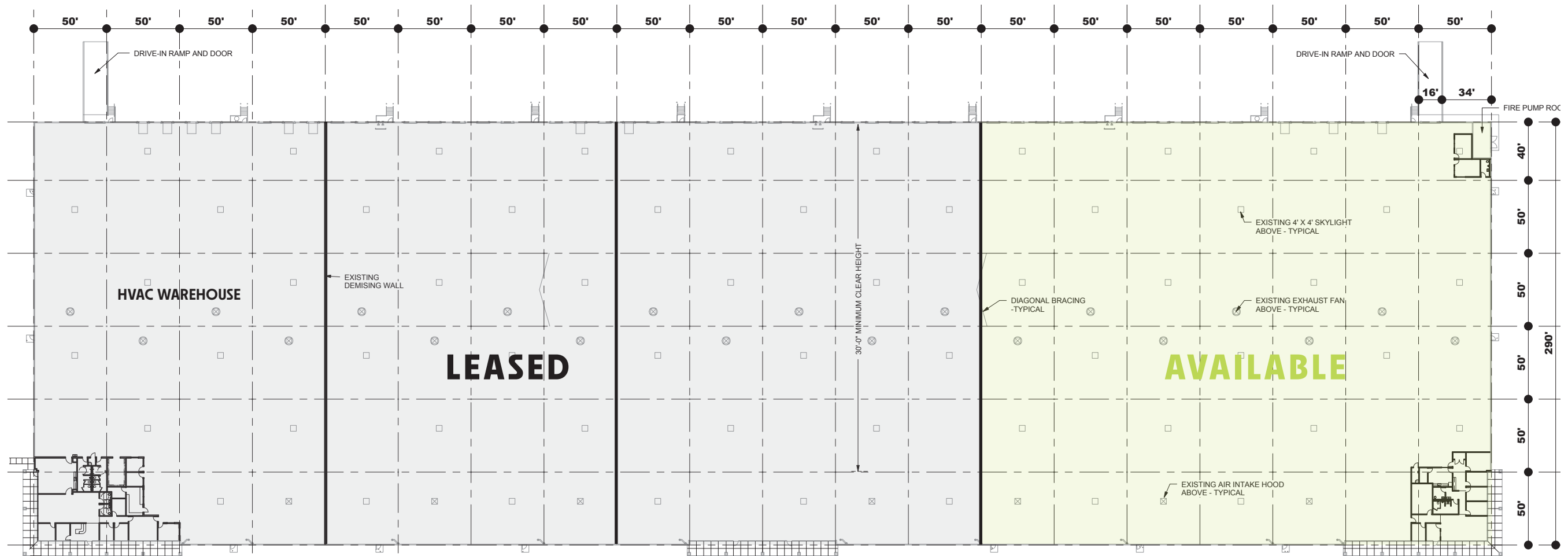
### FOR LEASING INFORMATION:

Sarah Ozanne | [sarah.ozanne@streamrealty.com](mailto:sarah.ozanne@streamrealty.com) | 214.210.1281  
Jeremy Kelly | [jkelly@streamrealty.com](mailto:jkelly@streamrealty.com) | 214.210.1360

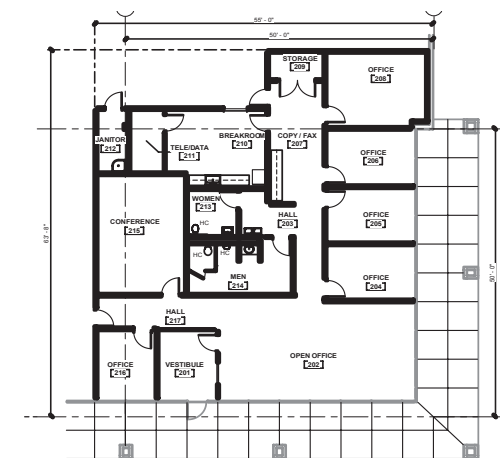
A PROPERTY OF

**nuveen**

A TIAA Company



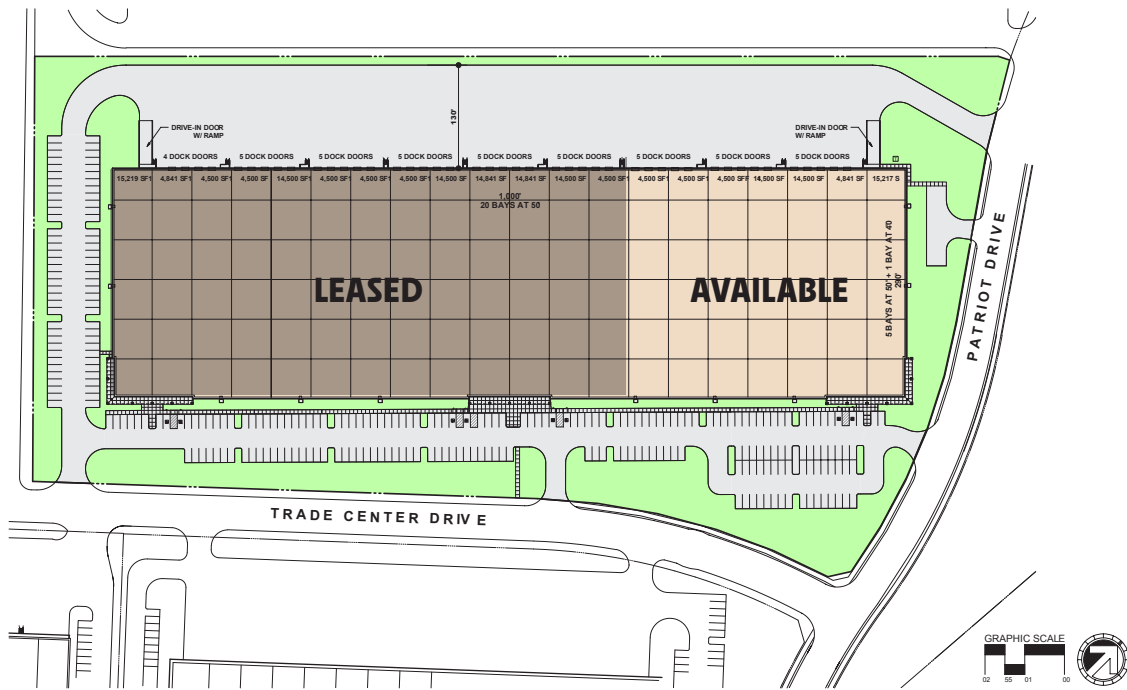
**SUITE 100**  
4,514 SF



**SUITE 400**  
2,842 SF

**WAREHOUSE OFFICE**  
530 SF





# 4265 TRADE CENTER

GRAPEVINE, TX 75211 | BUILDING G

