

INDUSTRIAL SPACE FOR LEASE

2180 SW 71st Terrace

DAVIE, FL 33317

AVAILABLE**±15,280 SF**

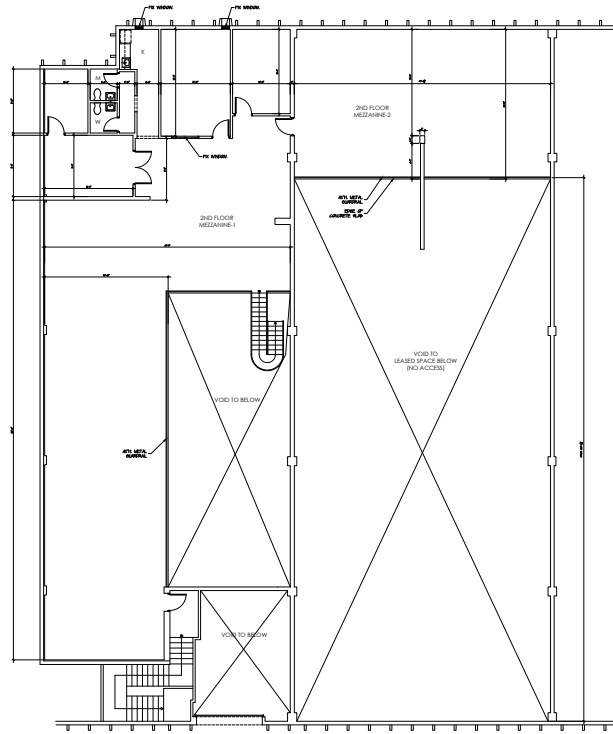
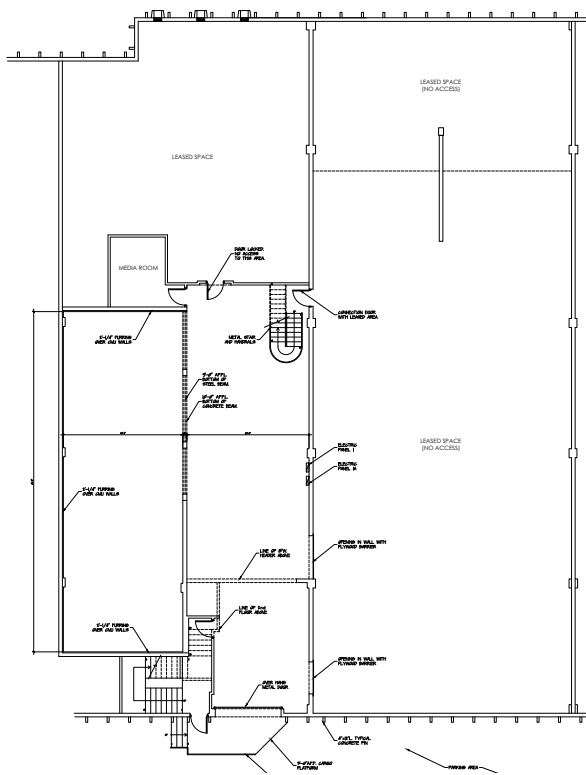
Building Specifications

Total SF Available	±15,280 SF
Ground Office	±3,707 SF
Mezzanine Office/Storage	5,484 SF
Clear Height	22' -24'
Loading	2 dock doors
Zoning	I-1 Industrial
HVAC	100%
Power	1,200 Amps
Available	May 1, 2026



GROUND OFFICE
3,707 SF

MEZZ OFFICE/STORAGE
5,484 SF



CBRE

CONTACT US

Tom O'Loughlin
Vice Chairman
+1 954 817 3919
tom.oloughlin@cbre.com

Michael Oretsky
First Vice President
+1 954 798 4284
michael.oretzky@cbre.com