

# Parkview Campus Acreage

10750 W. 183rd St, Orland Park, IL 60467

LAND - MULTIFAMILY FOR SALE



Wolf Road

Parkview  
Christian Church

183rd Street

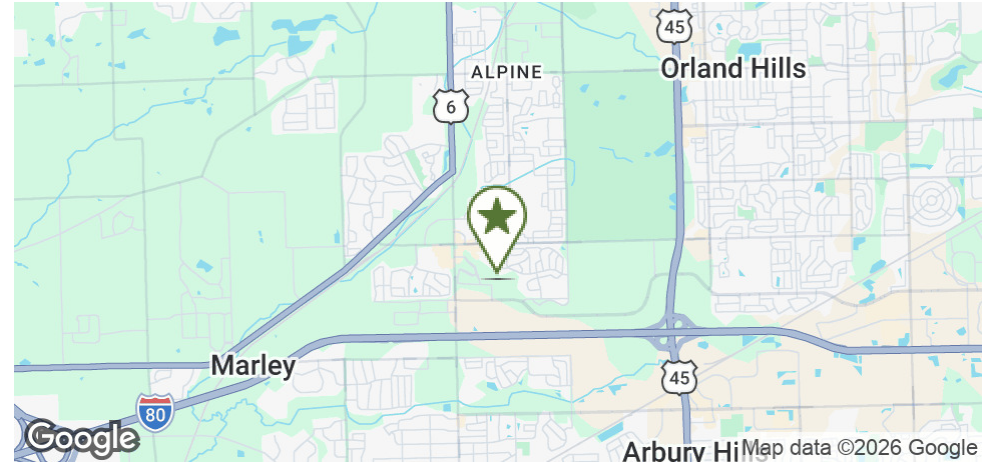
Evergreen  
Senior Living



# Parkview Campus Acreage | 10750 W. 183rd St, Orland Park, IL 60467

LAND - MULTIFAMILY FOR SALE

john greene Real Estate | 1311 S Route 59, Naperville, IL 60564 | 630.229.2290



## OFFERING SUMMARY

<b>Sale Price:</b>	Subject to Offer
<b>Lot Size:</b>	15.2± AC
<b>Zoning:</b>	ORI - Mixed Use
<b>2023 Taxes:</b>	\$308.52
<b>County:</b>	Will

## PROPERTY OVERVIEW

Highly desirable Orland Park infill site suitable for senior, multifamily, and/or residential development. Property is at grade, and partially detained, with all utilities and roadways completed to the site.

Site is minutes from Orland Park central business district, Metra Rail stations, and I-80, with campus neighbors being Parkview Church, serving approximately 8,000 people across its three locations, and Evergreen Senior Living. The property benefits from existing adjacent amenities including walking trails and public parks.

## PROPERTY HIGHLIGHTS

- 4,478 VPD exposure on 183rd Street and 17,509 VPD exposure on Wolf Road
- Orland School District 135 (PK-8)
- Consolidated HSD 230 School District (Sandburg High School)
- Utilities to site
- Roadway to site
- Site surveys, engineering and CCR's are available

**Shamus Conneely**

shamusconneely@johngreenecommercial.com

773.814.3378

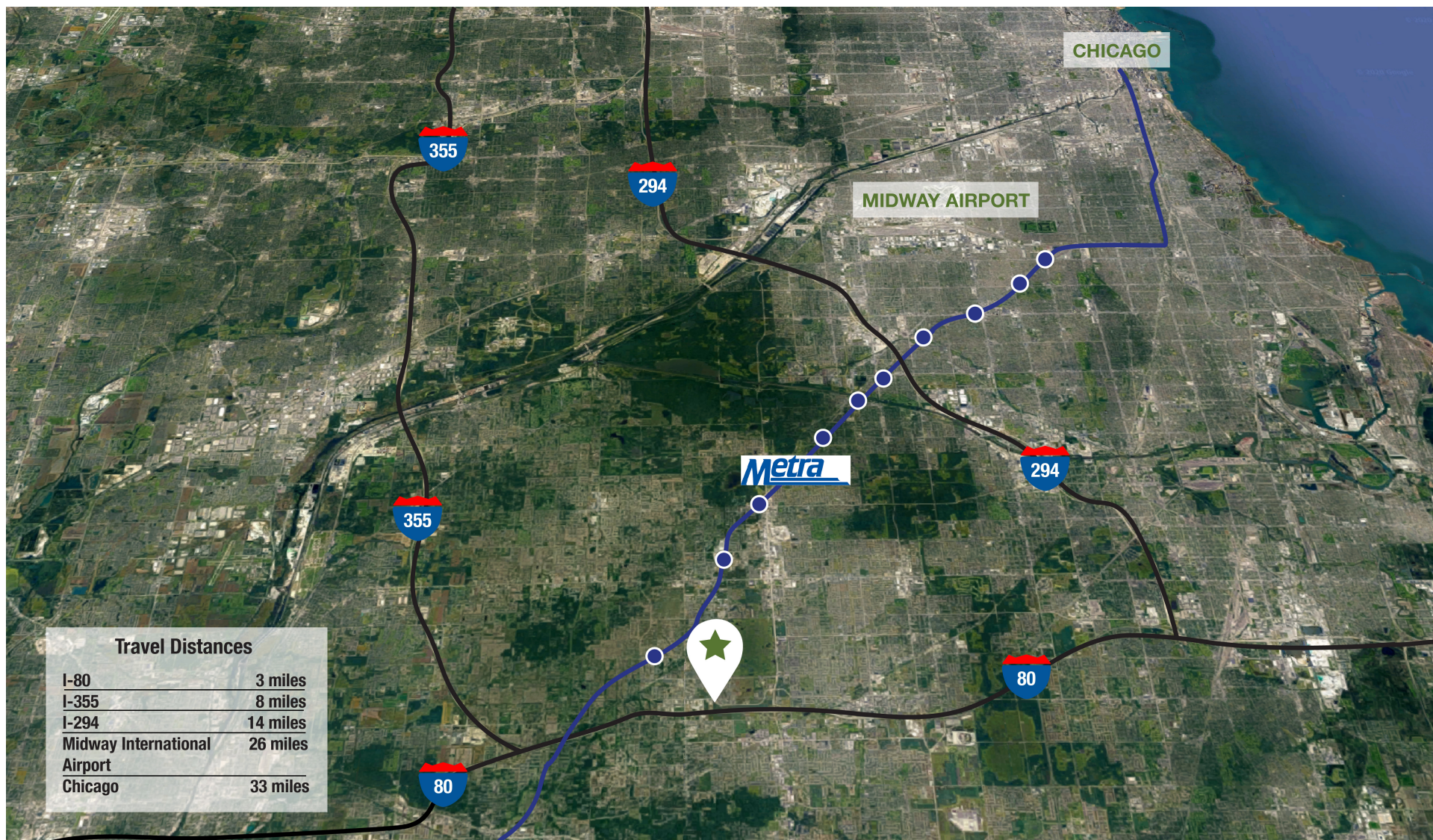
The information contained herein is from sources john greene Real Estate deems reliable, but is not guaranteed. This offer may be withdrawn from the market or be subject to a change in price or terms without advance notice. Seller reserves the right to reject any and all offers. Duplication is expressly prohibited. 2019

**john  
greene**  
REAL ESTATE

# Parkview Campus Acreage | 10750 W. 183rd St, Orland Park, IL 60467

LAND - MULTIFAMILY FOR SALE

john greene Real Estate | 1311 S Route 59, Naperville, IL 60564 | 630.229.2290



**Shamus Conneely**

shamusconneely@johngreenecommercial.com

773.814.3378

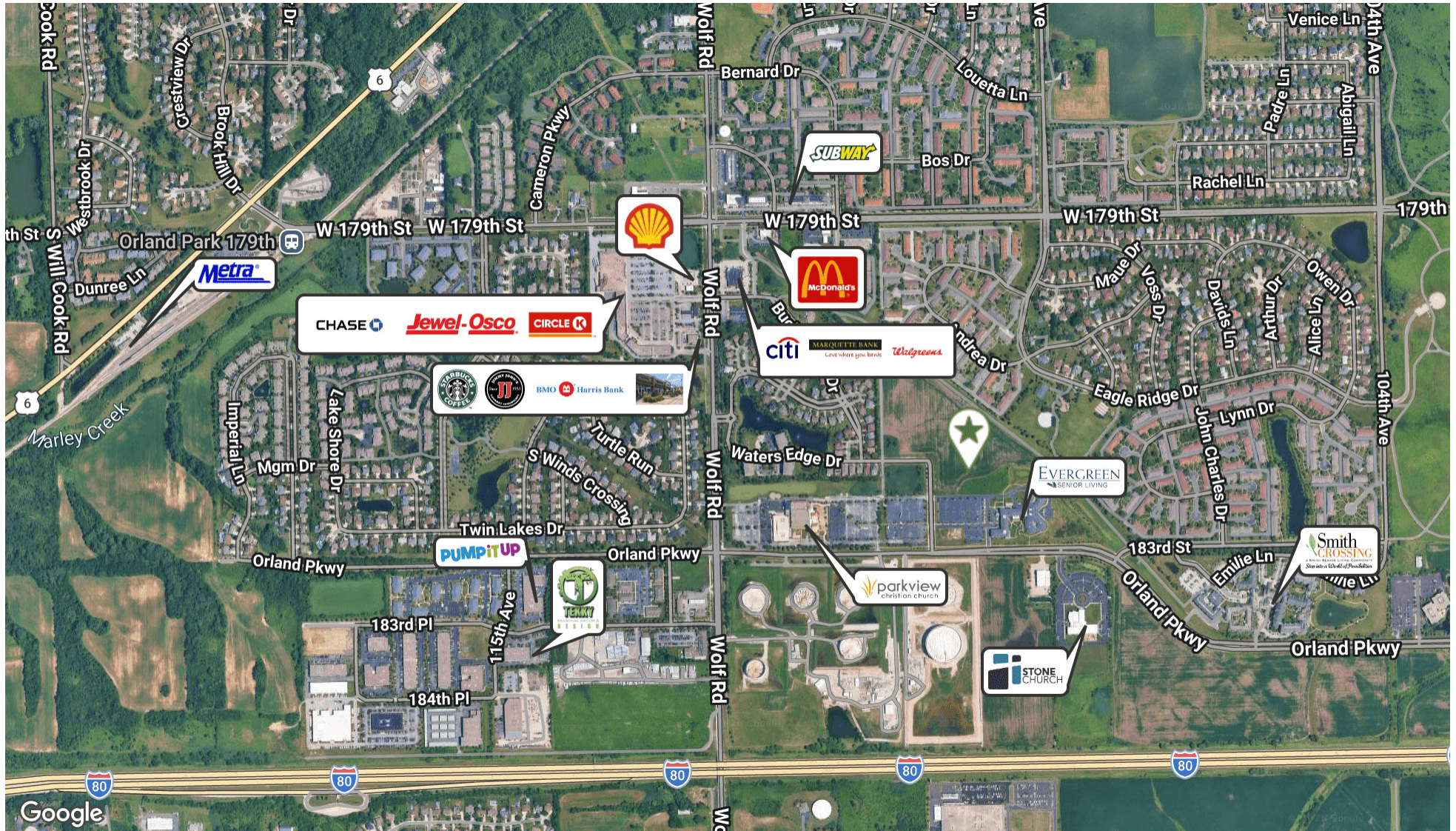
The information contained herein is from sources john greene Real Estate deems reliable, but is not guaranteed. This offer may be withdrawn from the market or be subject to a change in price or terms without advance notice. Seller reserves the right to reject any and all offers. Duplication is expressly prohibited. 2019

john  
greene  
REAL ESTATE

# Parkview Campus Acreage | 10750 W. 183rd St, Orland Park, IL 60467

LAND - MULTIFAMILY FOR SALE

John Greene Real Estate | 1311 S Route 59, Naperville, IL 60564 | 630.229.2290



**Shamus Conneely**  
shamusconneely@johngreenecommercial.com

773.814.3378

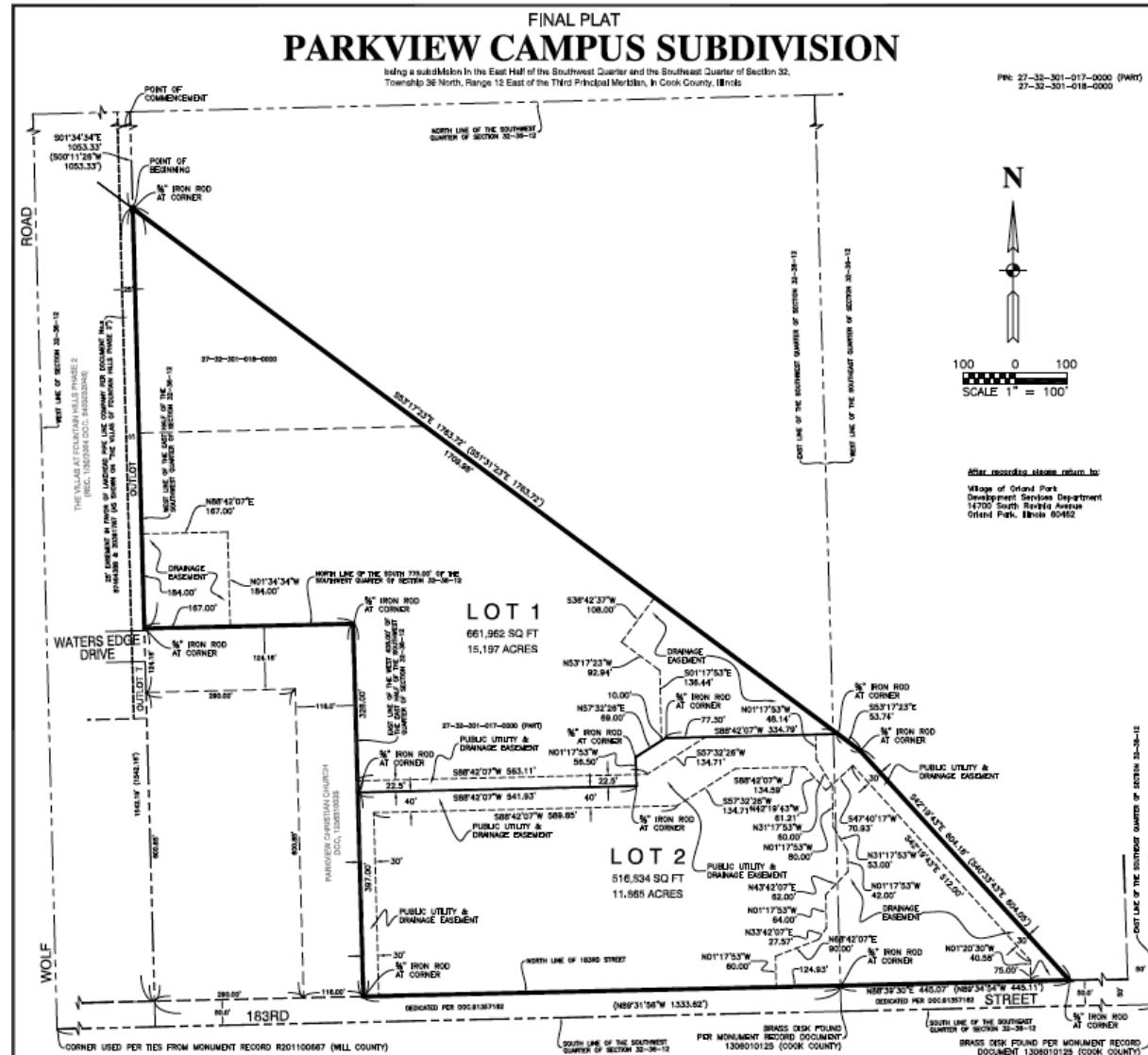
The information contained herein is from sources John Greene Real Estate deems reliable, but is not guaranteed. This offer may be withdrawn from the market or be subject to a change in price or terms without advance notice. Seller reserves the right to reject any and all offers. Duplication is expressly prohibited. 2019

**john  
greene**  
REAL ESTATE

# Parkview Campus Acreage | 10750 W. 183rd St, Orland Park, IL 60467

LAND - MULTIFAMILY FOR SALE

john greene Real Estate | 1311 S Route 59, Naperville, IL 60564 | 630.229.2290



Shamus Conneely  
shamusconneely@johngreenecommercial.com

773.814.3378

The information contained herein is from sources John Greene Real Estate deems reliable, but is not guaranteed. This offer may be withdrawn from the market or be subject to a change in price or terms without advance notice. Seller reserves the right to reject any and all offers. Duplication is expressly prohibited. 2019



# Parkview Campus Acreage | 10750 W. 183rd St, Orland Park, IL 60467

LAND - MULTIFAMILY FOR SALE

john greene Real Estate | 1311 S Route 59, Naperville, IL 60564 | 630.229.2290

POPULATION	1 MILE	3 MILES	5 MILES
Total Population	5,634	42,915	128,954
Average age	43.5	41.5	39.9
Average age (Male)	43.3	40.1	38.5
Average age (Female)	42.6	41.8	40.6

HOUSEHOLDS & INCOME	1 MILE	3 MILES	5 MILES
Total households	2,008	14,920	43,359
# of persons per HH	2.8	2.9	3.0
Average HH income	\$101,377	\$104,273	\$105,186
Average house value	\$372,741	\$371,060	\$374,827

\* Demographic data derived from 2020 ACS - US Census

## Shamus Conneely

shamusconneely@johngreenecommercial.com

773.814.3378

The information contained herein is from sources john greene Real Estate deems reliable, but is not guaranteed. This offer may be withdrawn from the market or be subject to a change in price or terms without advance notice. Seller reserves the right to reject any and all offers. Duplication is expressly prohibited. 2019

