

208 Manufacturers Blvd  
Mooresville, NC 28115

Available For Sublease  
**±116,500 SF**



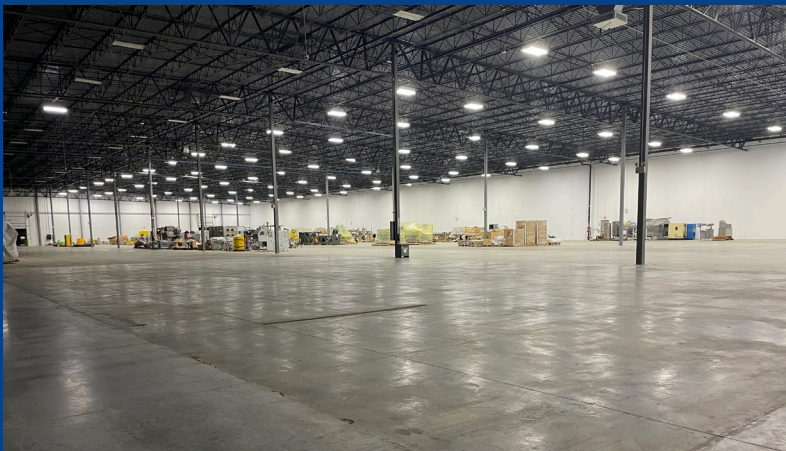
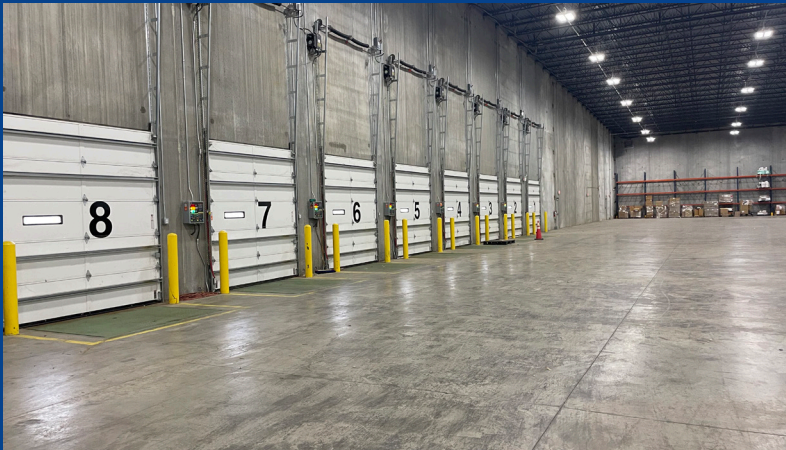
**Grant Miller, SIOR**  
Executive Vice President  
+1 704 409 2364  
[grant.miller@colliers.com](mailto:grant.miller@colliers.com)



Accelerating success.



# Property Overview



---

**Available Space:** ±116,500 SF

**Clear Height:** 32'

---

**Office Space:** ±2,500 SF

**Sprinkler:** ESFR

---

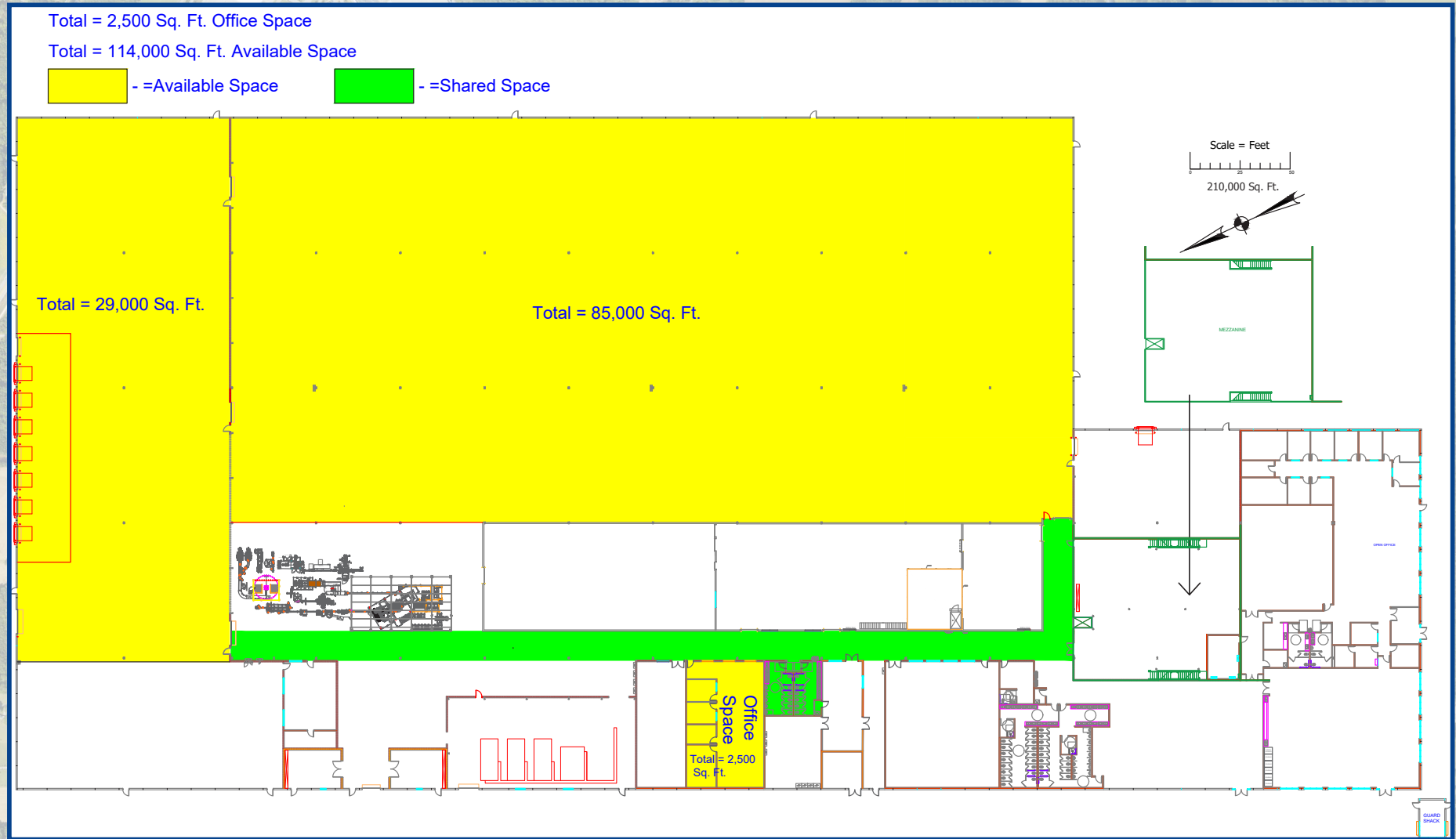
**Loading:** (8) Dock High Doors  
(1) Drive In Door

**Pricing:** Call for Pricing

---

# Property Overview

## Floor Plan







## Colliers Charlotte

300 W. Summit Ave | Suite 200  
Charlotte, NC 28203  
+1 704 409 9933



This document/email has been prepared by Colliers for advertising and general information only. Colliers makes no guarantees, representations or warranties of any kind, expressed or implied, regarding the information including, but not limited to, warranties of content, accuracy and reliability. Any interested party should undertake their own inquiries as to the accuracy of the information. Colliers excludes unequivocally all inferred or implied terms, conditions and warranties arising out of this document and excludes all liability for loss and damages arising there from. This publication is the copyrighted property of Colliers and /or its licensor(s). © 2025. All rights reserved. This communication is not intended to cause or induce breach of an existing listing agreement. Colliers International Group Inc.