

FOR LEASE

5351 South Roslyn Street, Greenwood Village CO 80111

LANDMARK MEDICAL CENTER

SUITE DETAILS

BUILDING SIZE	33,282 SF
AVAILABLE SPACE	7,439 - 8,543 SF
LEASE RATE	\$35.00 NNN
CEILING HEIGHTS	10+ Feet
OP EX	\$14 PSF
ZONING	B-2 / Office / Medical
CITY	Greenwood Village
PARKING	4.5/1,000 SF
OCCUPANCY	Negotiable



ADDITIONAL FEATURES

- ▶ Fully Equipped Surgery Center
- ▶ 2 fully equipped OR's
- ▶ One to the Landmark Town Center
- ▶ Covered Patient Drop-off
- ▶ Class A / Sustainable Design



DESCRIPTION



JACK ROHR

EMAIL jrohr@resoluteinv.com
PHONE 303-842-1869
WEBSITE www.resoluteinv.com

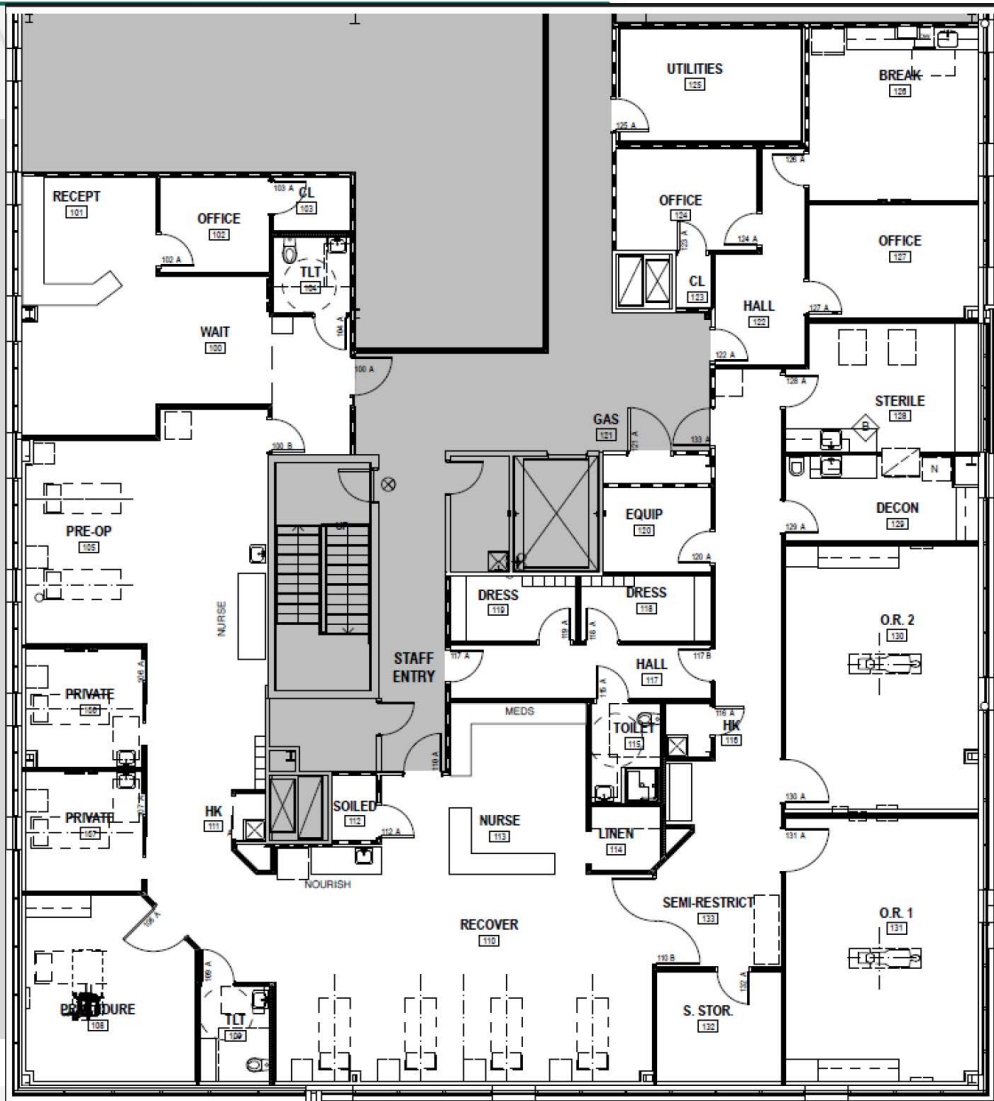
The Landmark Medical Center is a new medical office building next door to the Landmark Town Center. The 33,282 square-foot, three-story property features suite sizes ranging from 1,250 sq. ft. to the entire building of 33,282 sq. ft. The abundance of retail shops and restaurants in the surrounding area including the Landmark Town Center and Pappadeaux Seafood Kitchen next door, along with the building's close proximity to light rail, provides a unique opportunity in a premium location. The building sits in the heart of Greenwood Village.

MEDICAL OFFICE FOR LEASE

LANDMARK MEDICAL CENTER

5351 South Roslyn Street, Greenwood Village, CO

FLOOR PLAN



RESOLUTE
JACK ROHR

EMAIL: jrohr@resoluteinv.com
PHONE: 303-842-1869
WEBSITE: www.resoluteinv.com

