



For Lease

±9.08 AC

SWC of Lilac Ave & Santa Ana Ave
Rialto, CA 92316

Contact us:

Richard Schwartz

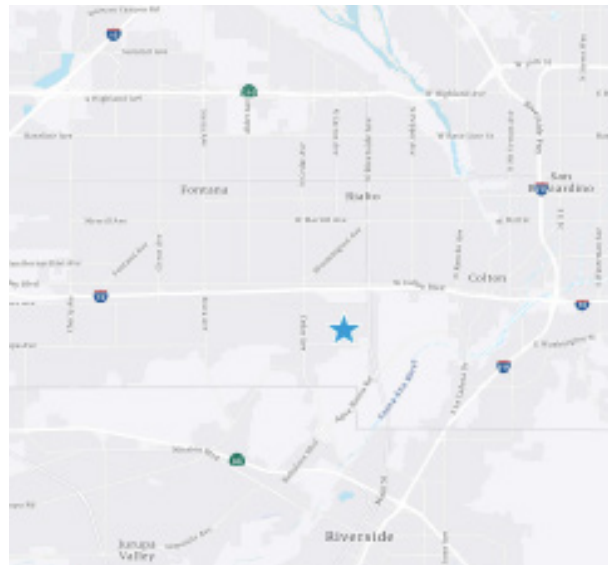
Vice Chairman
Dir +1 909 937 6307
Lic. 01712680
richard.schwartz@colliers.com

Joey Reaume

Executive Vice President
Dir +1 909 612 2601
Lic. 01918579
joey.reaume@colliers.com

Available for Trailer Parking

- 13.2 Acres Total
- 9.08 Acres Paved & Fenced
- Zoned M-1 Light Industrial
- Strategic location with easy access to 10 & 215 Freeways



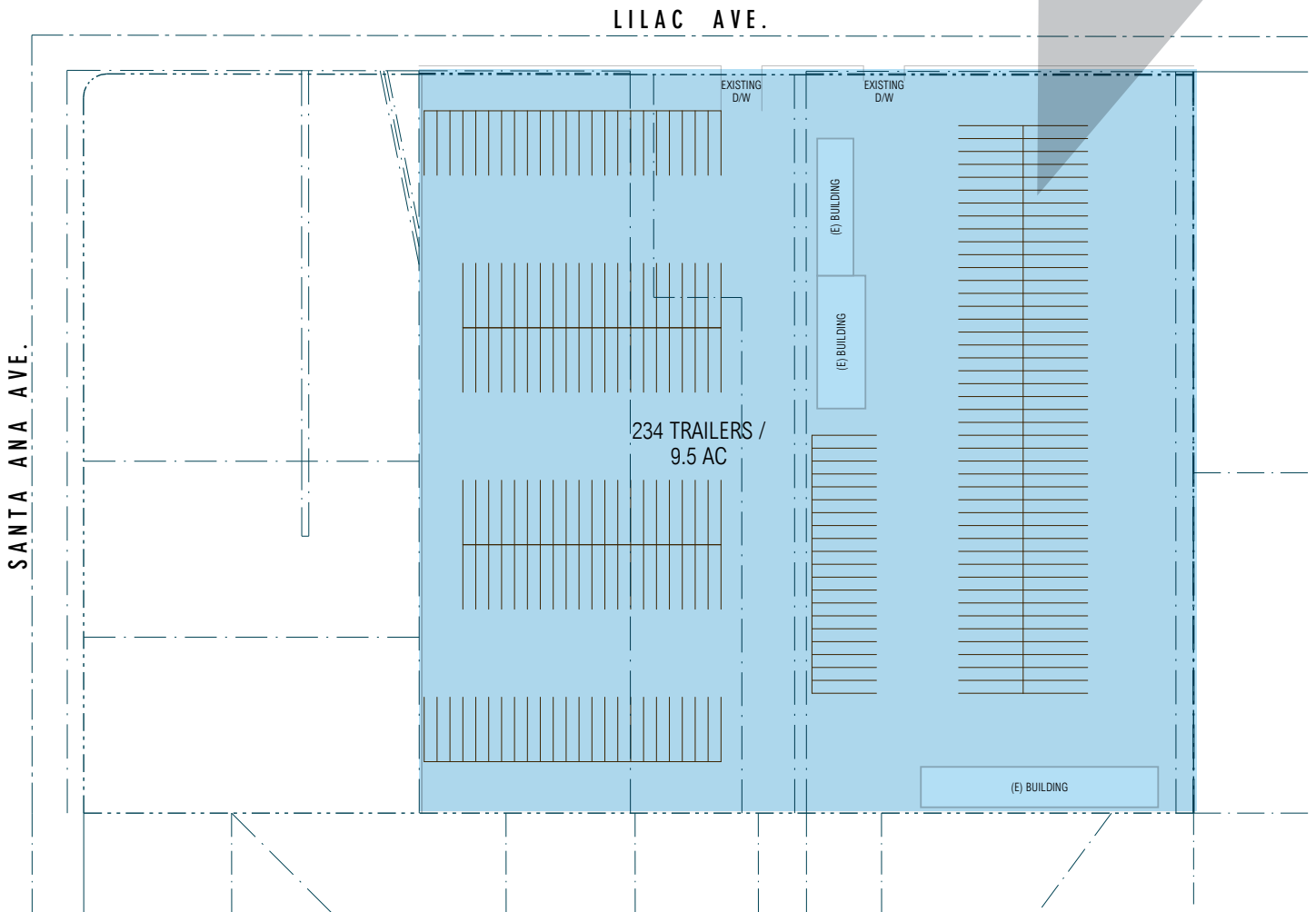
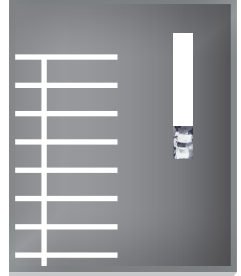
Copyright © 2024 Colliers International.

Information herein has been obtained from sources deemed reliable, however its accuracy cannot be guaranteed. The user is required to conduct their own due diligence and verification.



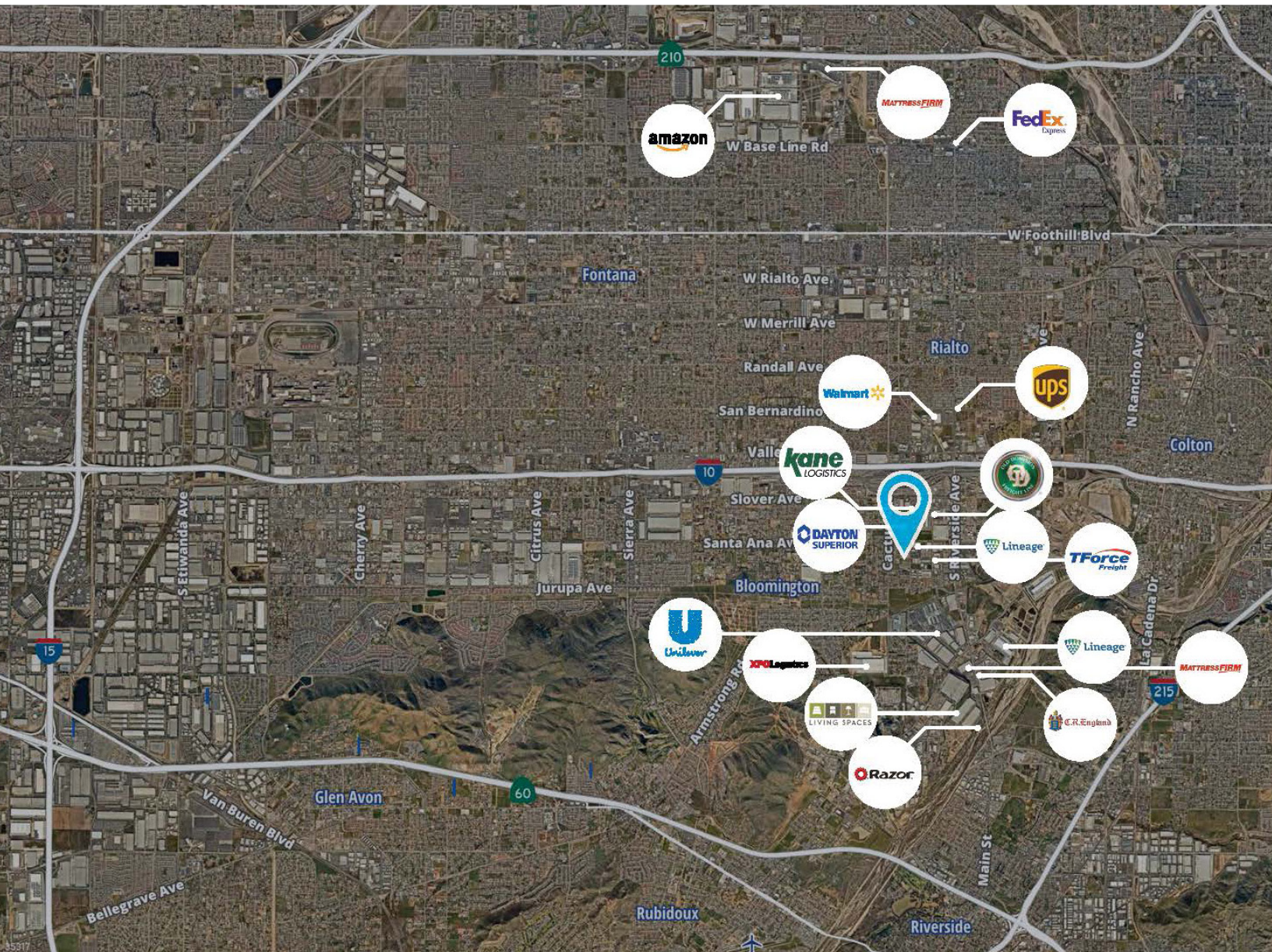
Site Plan

234 Trailer Parking Stalls



Iconic Corporate Tenants

State-of-the-art Facilities Are Attracting Big Brands



Richard Schwartz
Vice Chairman
Dir +1 909 937 6307
Lic. 01712680
richard.schwartz@colliers.com

Joey Reaume
Executive Vice President
Dir +1 909 612 2601
Lic. 01918579
joey.reaume@colliers.com

