

# 8± Acres Route 1 & Lakeridge Parkway

Ashland, Virginia



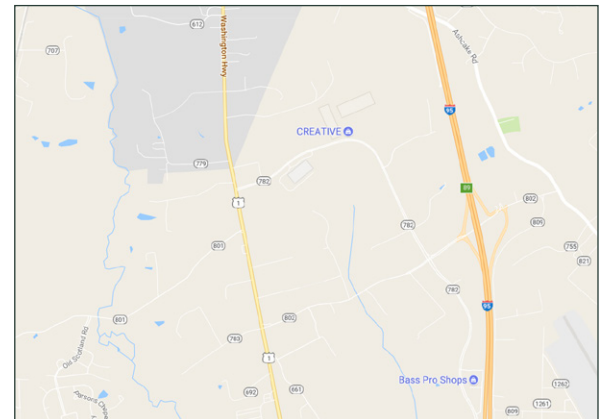
FOR SALE



## Build to Suit - Land Lease

### HIGHLIGHTS

- 8± Acres
- Utilities near the site
- Comprehensive plan calls for Retail
- Will Subdivide



**GENERAL LAND COMPANY**  
Commercial Real Estate  
2800 Patterson Ave, Richmond, Virginia 23221

### MORE INFORMATION

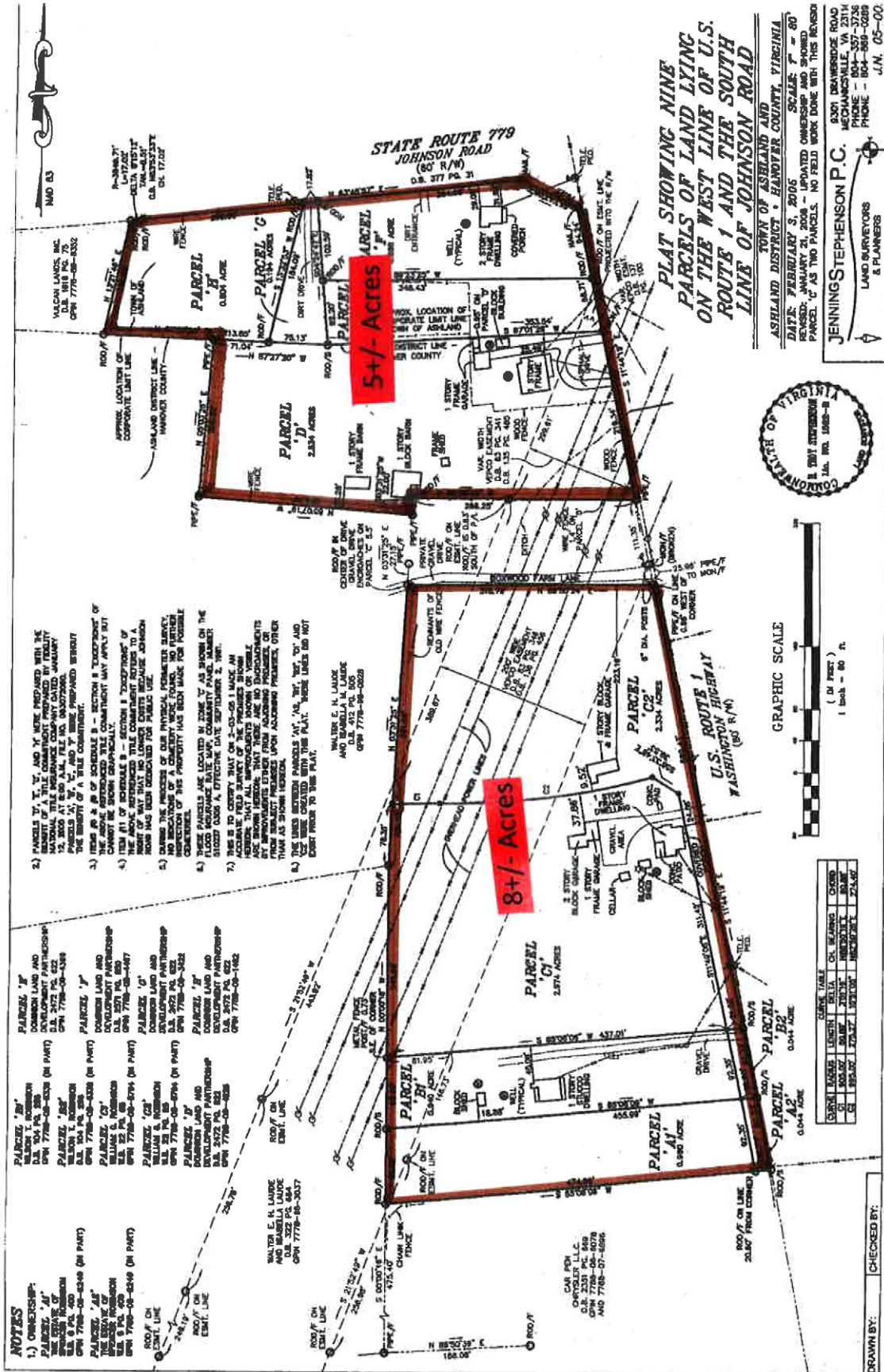
MIKE CARROLL  
mcarroll@glcva.com  
(804) 359-3575

# 8± Acres Route 1 & Lakeridge Parkway

Ashland, Virginia



FOR SALE



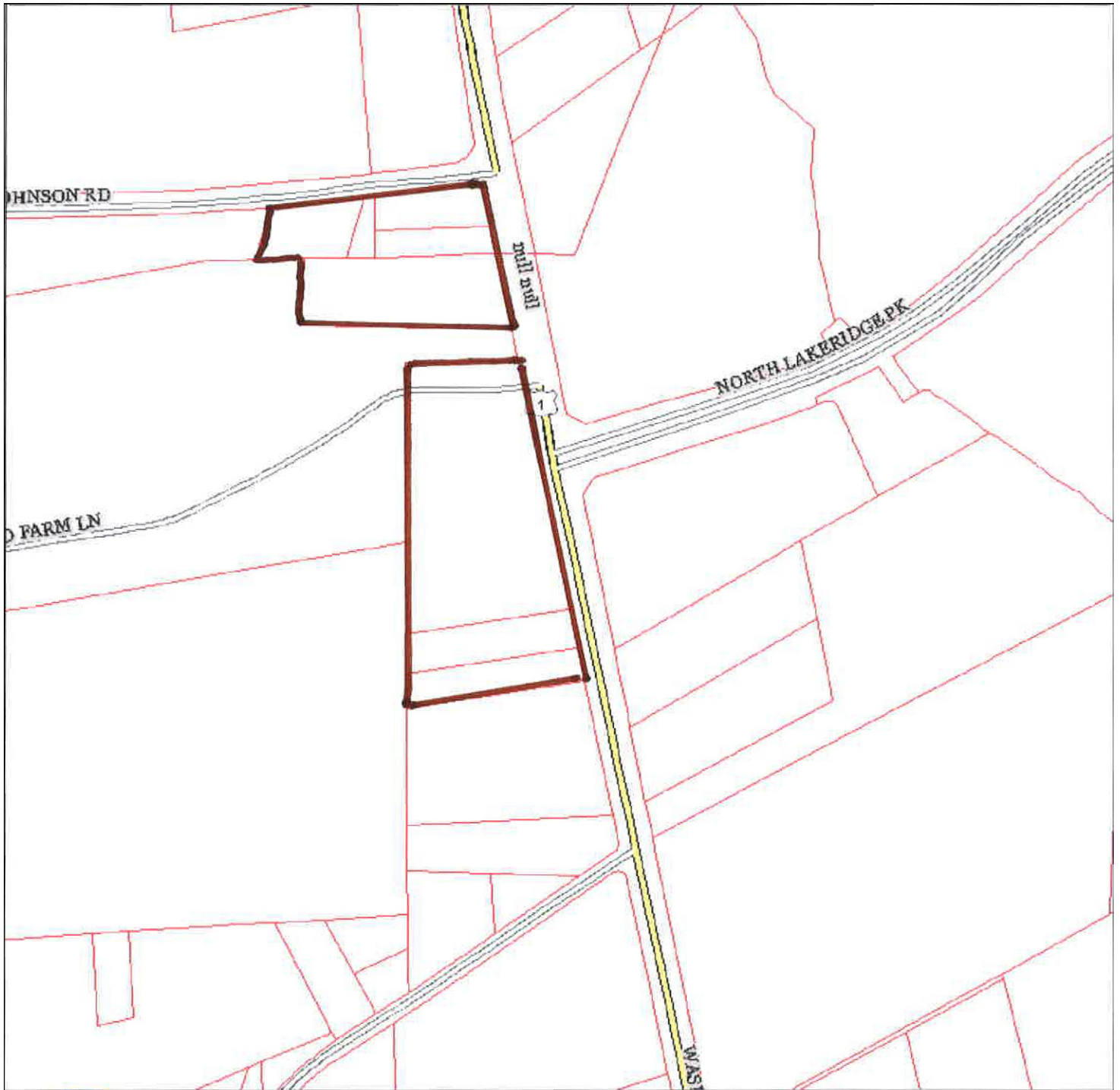
Information contained herein was provided by sources believed to be reliable, General Land Commercial Real Estate Co. makes no representation, expressed or implied, as to its accuracy and said information is subject to errors, omissions or changes.

# 8± Acres Route 1 & Lakeridge Parkway

Ashland, Virginia



FOR SALE



 **ERLE RD** Street Labels  Conditional Use Permits  Urban Service Areas  Tax Parcels

 Topography  CUP Lines

**Shrink Swell Soils**  
 Moderate  
 Severe  
 Slight

 Building Addresses



01/15/2012  
Scale 1:4000

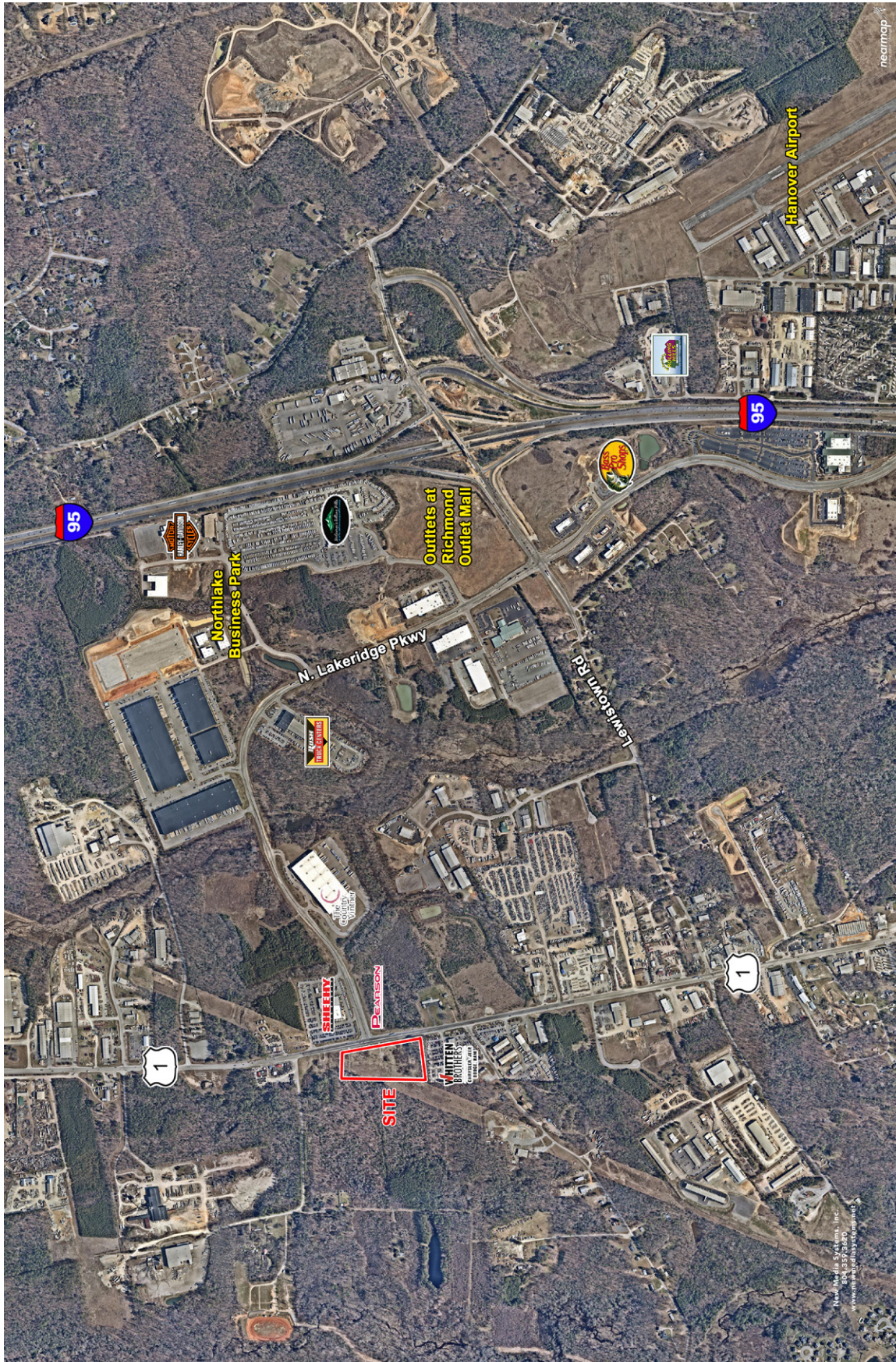
Information contained herein was provided by sources believed to be reliable, General Land Commercial Real Estate Co. makes no representation, expressed or implied, as to its accuracy and said information is subject to errors, omissions or changes.

# 8± Acres Route 1 & Lakeridge Parkway

Ashland, Virginia



FOR SALE



Information contained herein was provided by sources believed to be reliable, General Land Commercial Real Estate Co. makes no representation, expressed or implied, as to its accuracy and said information is subject to errors, omissions or changes.