

1540

1555

RIVER PARK DRIVE
SACRAMENTO, CA

PROPERTY HIGHLIGHTS

- Completely renovated and revitalized office park
- Excellent Proximity to numerous retail & dining amenities
- Great access to Business 80 & Highway 160
- Conference facilities
- Spaces built out for immediate occupancy
- Featured spaces contain private outdoor balconies
- 4.00/1,000 SF Parking Ratio

SPENCER NIELSEN

Director
+1 916 288 4531
spencer.nielsen@cushwake.com
CA LIC #01964163

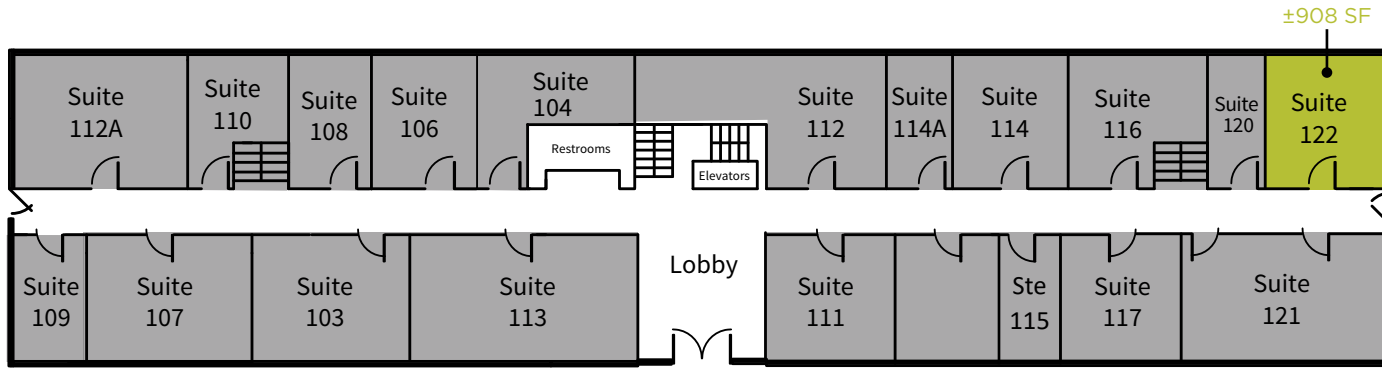
SEAN MULLEN

Managing Director
+1 916 288 4811
sean.mullen@cushwake.com
CA LIC #01845406

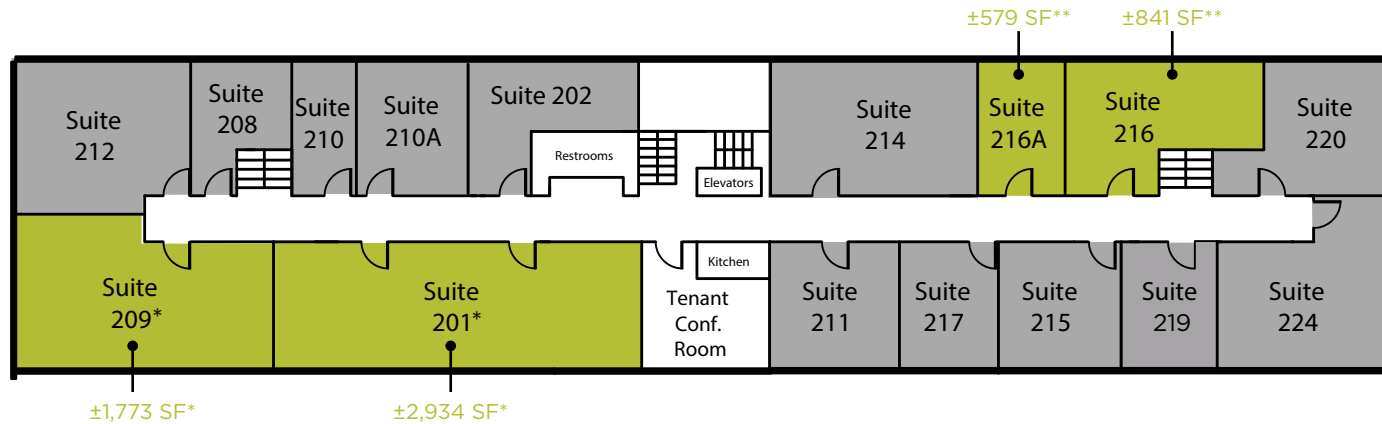


1540 RIVER PARK DRIVE

1ST FLOOR



2ND FLOOR



*can be combined for ±4,707 SF

**Suites can combine for a total of ±1,420 SF

AVAILABLE FOR LEASE LEASED

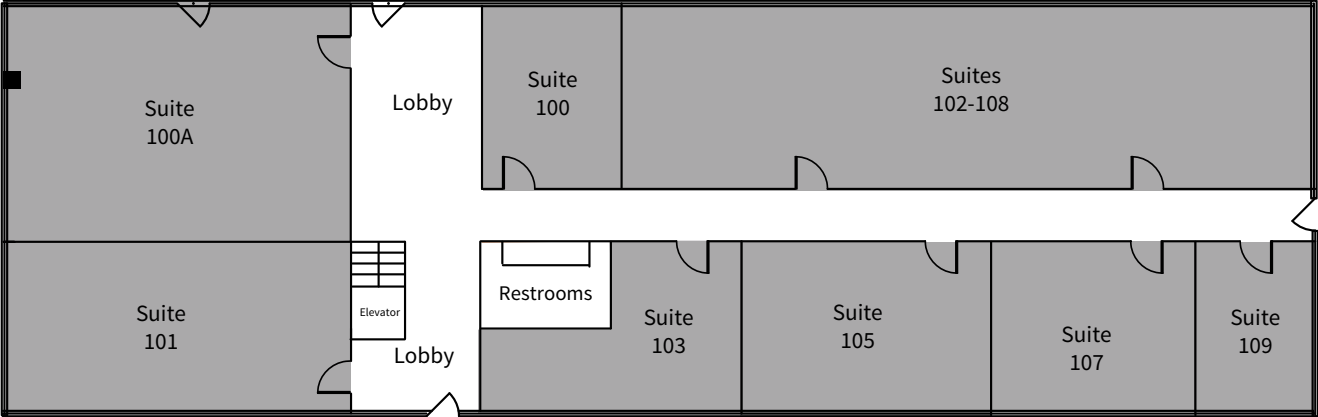
SPENCER NIELSEN
 Director
 +1 916 288 4531
 spencer.nielsen@cushwake.com
 CA LIC #01964163

SEAN MULLEN
 Managing Director
 +1 916 288 4811
 sean.mullen@cushwake.com
 CA LIC #01845406

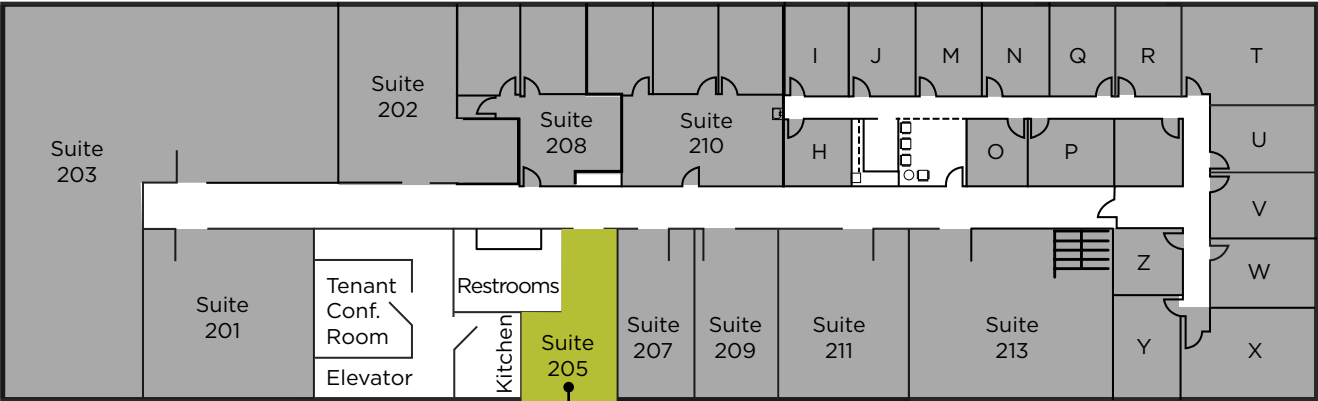


1555 RIVER PARK DRIVE

1ST FLOOR



2ND FLOOR



±674 SF
Available 3/1/25

■ AVAILABLE FOR LEASE ■ LEASED

SPENCER NIELSEN
Director
+1 916 288 4531
spencer.nielsen@cushwake.com
CA LIC #01964163

SEAN MULLEN
Managing Director
+1 916 288 4811
sean.mullen@cushwake.com
CA LIC #01845406



PROPERTY PHOTOS



SPENCER NIELSEN

Director
+1 916 288 4531
spencer.nielsen@cushwake.com
CA LIC #01964163

SEAN MULLEN

Managing Director
+1 916 288 4811
sean.mullen@cushwake.com
CA LIC #01845406





SPENCER NIELSEN
Director
+1 916 288 4531
spencer.nielsen@cushwake.com
CA LIC #01964163

SEAN MULLEN
Managing Director
+1 916 288 4811
sean.mullen@cushwake.com
CA LIC #01845406



SPENCER NIELSEN | DIRECTOR

+1 916 288 4531

spencer.nielsen@cushwake.com

CA LIC #01964163

SEAN MULLEN | MANAGING DIRECTOR

+1 916 288 4811

sean.mullen@cushwake.com

CA LIC #01845406

400 Capitol Mall, Suite 1800

Sacramento, CA 95814

+1 916 288 4800

cushmanwakefield.com

1540