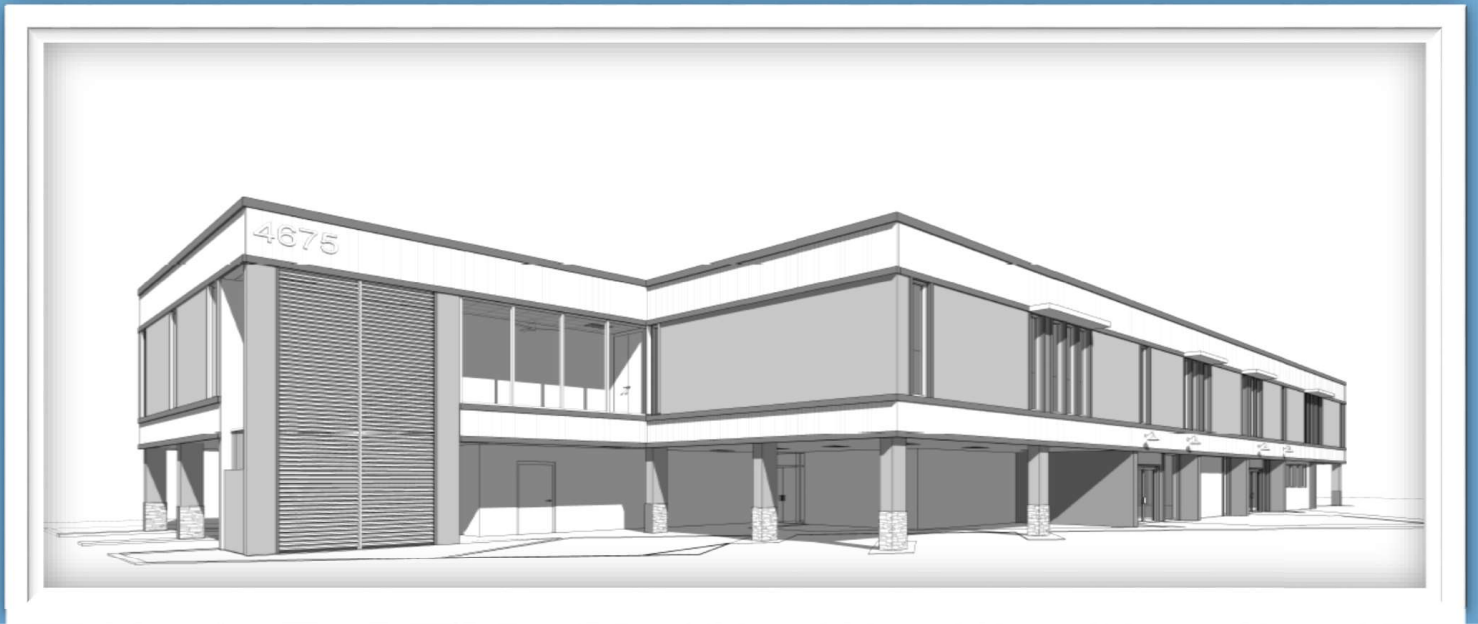




# ***Professional Office Space for Lease Dunwoody***

*678 to 4,243 rsf Available*

**4675 N. SHALLOWFORD ROAD, DUNWOODY, GA 30338**



*Building Renovation plan rendering by boggs vickers ARCHITECTURE subject to change*

- ◆ *Build to Suite Space*
- ◆ *High Exposure Location*
- ◆ *Plenty of Drive Up Parking*
- ◆ *Close to 285/400/85*



*Current Photo*

**Call Today**



**Rick Ferguson**

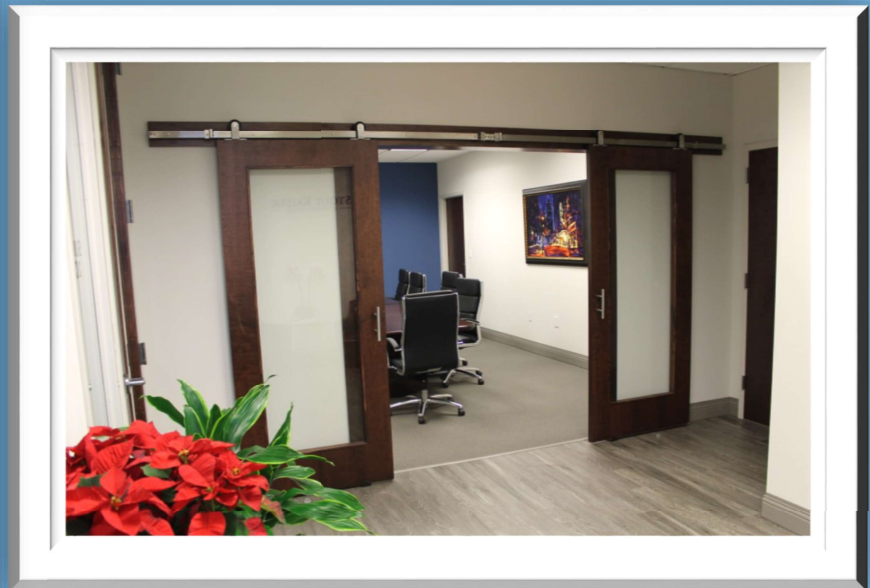
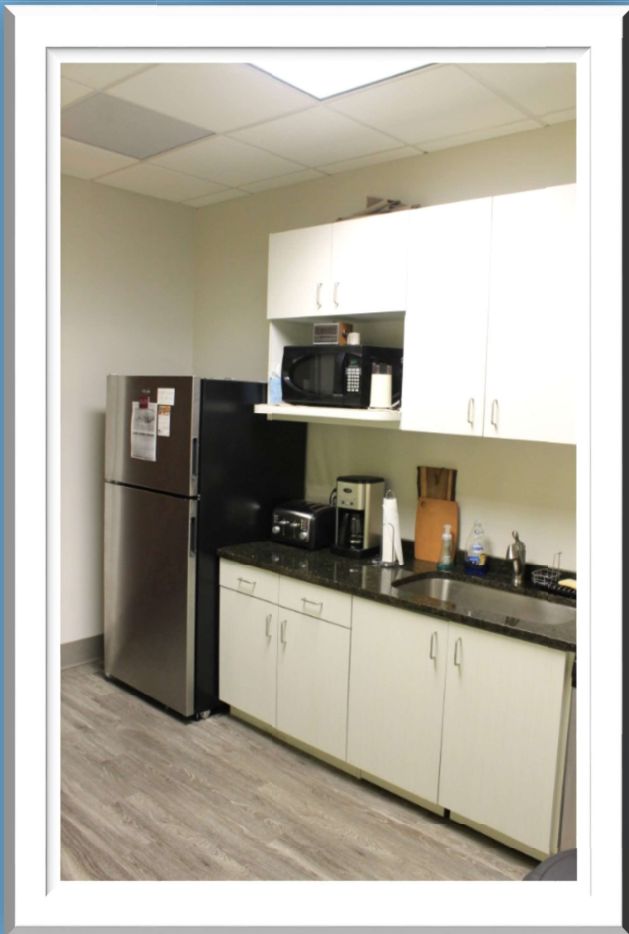
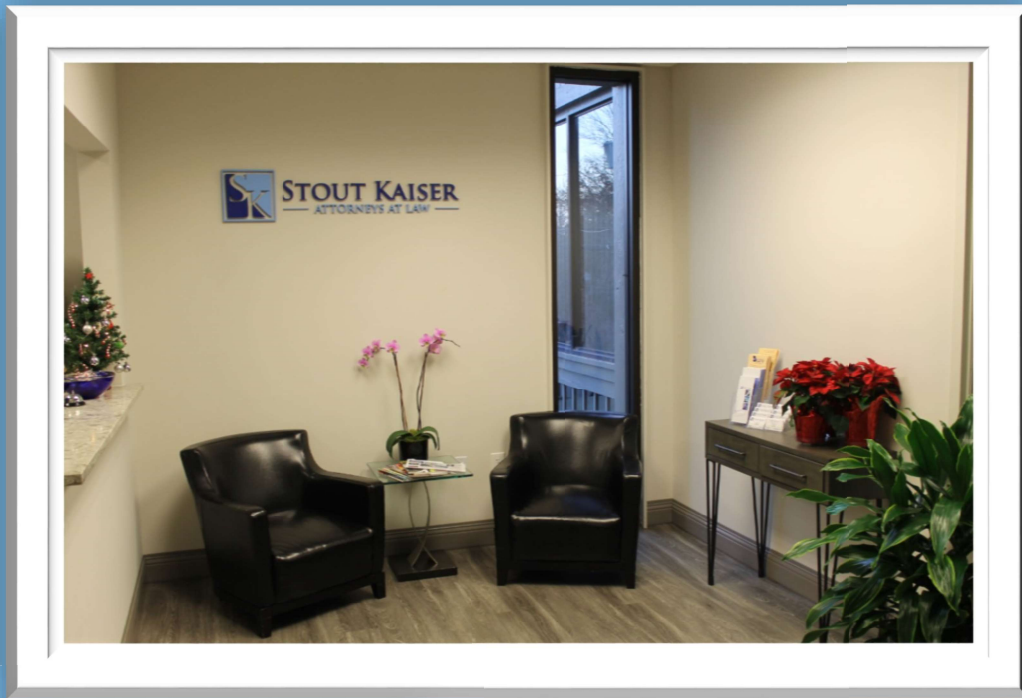
ATL-Commercial Real Estate

***Call to Discuss:  
Rates, Term & Timeline***

**678-209-3100** tele/text  
RickFerguson@CRE-ATL-CRE.com

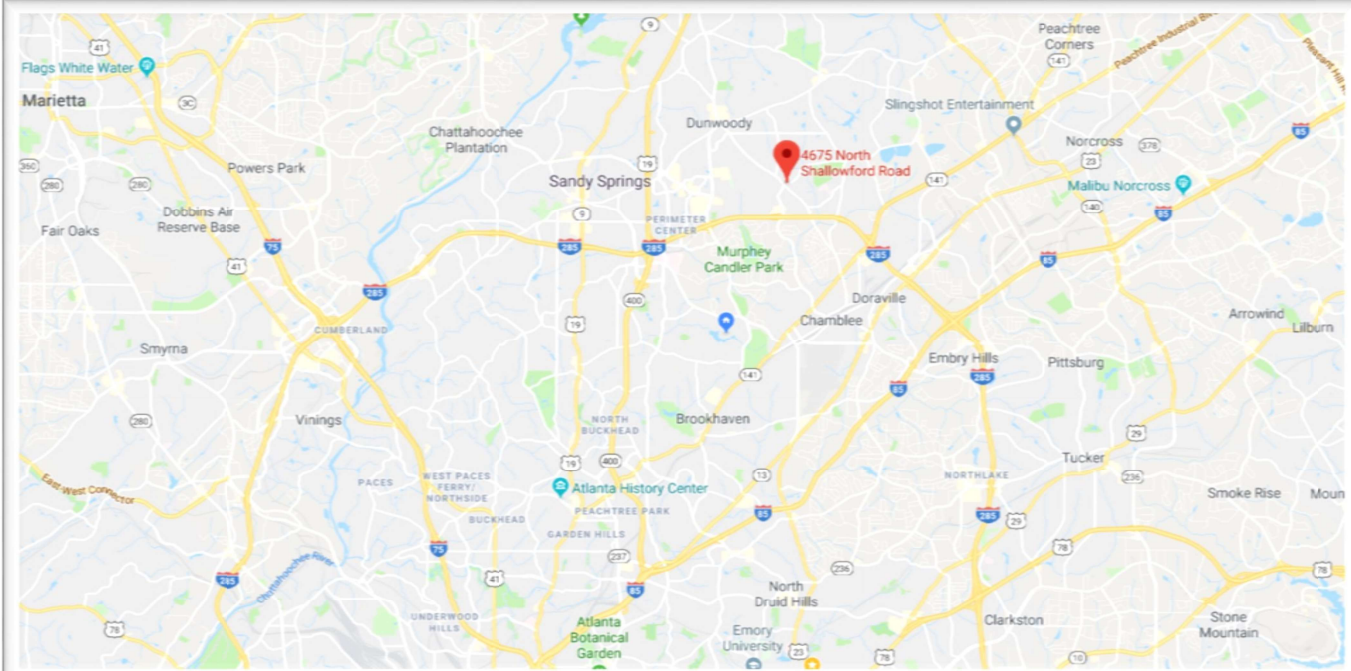
# Building Finishes

(Below recent suite buildout for Stout Kaiser LLC)



4675 N. SHALLOWFORD ROAD, DUNWOODY, GA 30338

# Location



## Pernoshal Park

Located at 4675 North Shallowford Road, at 5-acres, Pernoshal Park includes a pavilion, bathrooms, basketball courts, a pickleball court, large open field area for play, and a connection to part of the Dunwoody Trailway.

**4675 N. SHALLOWFORD ROAD, DUNWOODY, GA 30338**