



McNulty Group
Incorporated

FOR LEASE

6121 Anno Ave

Orlando, FL 32809



Unit:	4,800 ± SF	Power:	3 Phase
Warehouse:	3,800 ± SF	Doors:	(1) Dock 8'x8'
Office:	1,000 ± SF		(1) Ramp 8'x8'
Ceiling Ht:	17'-18'	Lease Rate:	\$14.00/SF NNN



McNulty Group, Inc. is the agent of the Landlord or Seller of this property and will be paid by the Landlord or Seller. All information furnished with respect to the subject property has been obtained from sources deemed reliable. No representation as to accuracy thereof is made. This offering is subject to errors, omissions, prior sales or withdrawal without notice.

Cole Wynia

Sales Associate

Cole@mcnultygroupinc.com

(407) 668-5537 Direct

McNulty Group Inc.

2315 Lynx Lane, Suite 6

Orlando, Florida 32804

407-532-3441

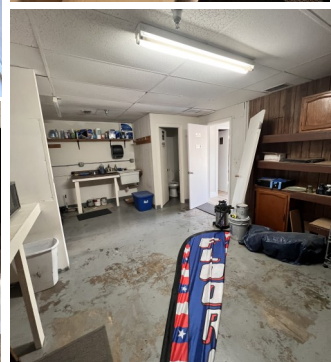
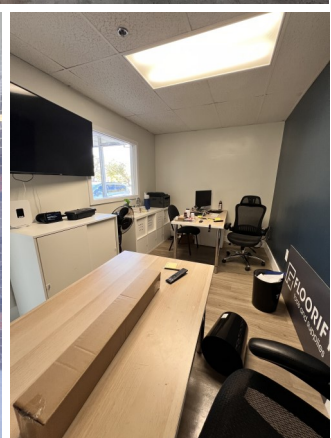


McNulty Group
Incorporated

FOR LEASE

6121 Anno Ave

Orlando, FL 32809



Cole Wynia

Sales Associate

Cole@mcnultygroupinc.com

(407) 668-5537 Direct

McNulty Group Inc.

2315 Lynx Lane, Suite 6

Orlando, Florida 32804

407-532-3441