

BUILDING CODE ANALYSIS

- OCCUPANCY CLASSIFICATION: GROUP B - BUSINESS
- CONSTRUCTION TYPE: TYPE V CONSTRUCTION
FULLY SPRINKLED
UNPROTECTED
- ACTUAL TENANT SPACE: 3731 SQ. FT. INTERIOR COMPLETION
- FIRE RESISTANCE RATING OF BUILDING COMPONENTS:
TABLE 602:
A) PARTY AND FIRE WALLS - 4
B) INTERIOR BEARING WALLS - 0
C) INTERIOR NON-BEARING WALLS - 0
D) COLUMNS - 0
E) BEAMS, GIRDERS, TRUSSES AND ARCHES - 0
F) FLOOR AND FLOOR / CEILING ASSEMBLIES - 0
G) ROOF AND ROOF / CEILING ASSEMBLIES - 0
H) EXTERIOR BEARING WALLS - 0
HORIZONTAL DISTANCE FROM PROPERTY LINE:
0 ft. to 3 ft.: 1 (20%)
OVER 3 ft. to 10 ft.: 0 (20%)
OVER 10 ft. to 20 ft.: 0 (40%)
OVER 20 ft. to 30 ft.: 0 (60%)
OVER 30 ft.: 0 (NL)
I) EXTERIOR NON-BEARING WALLS - 0
HORIZONTAL DISTANCE FROM PROPERTY LINE:
0 ft. to 3 ft.: 1 (20%)
OVER 3 ft. to 10 ft.: 0 (20%)
OVER 10 ft. to 20 ft.: 0 (40%)
OVER 20 ft. to 30 ft.: 0 (60%)
OVER 30 ft.: 0 (NL)
J) EXIT ACCESS CORRIDOR - 0
TABLE 1042.4
K) AREA SEPARATION WALLS - 1 HOUR
- OCCUPANCY CONTENT: 3731 sq. ft. / 100 = 37 PERSONS

- NUMBER OF EXITS REQUIRED:
SECTION 1004.2.2
MINIMUM NUMBER OF EXITS: OCCUPANCY LOAD PER STORY
2 - 500
3 - 501 - 1000
4 - MORE THAN 1000
NUMBER OF EXITS PROVIDED: 2

- MAXIMUM ALLOWABLE TRAVEL DISTANCE:
TABLE 1004:
ACTUAL TRAVEL DISTANCE: 300'
132'-9"
- MINIMUM CLEAR EXIT OPENING REQUIRED:
TABLE 1004:
ACTUAL CLEAR EXIT OPENING PROVIDED: 34'

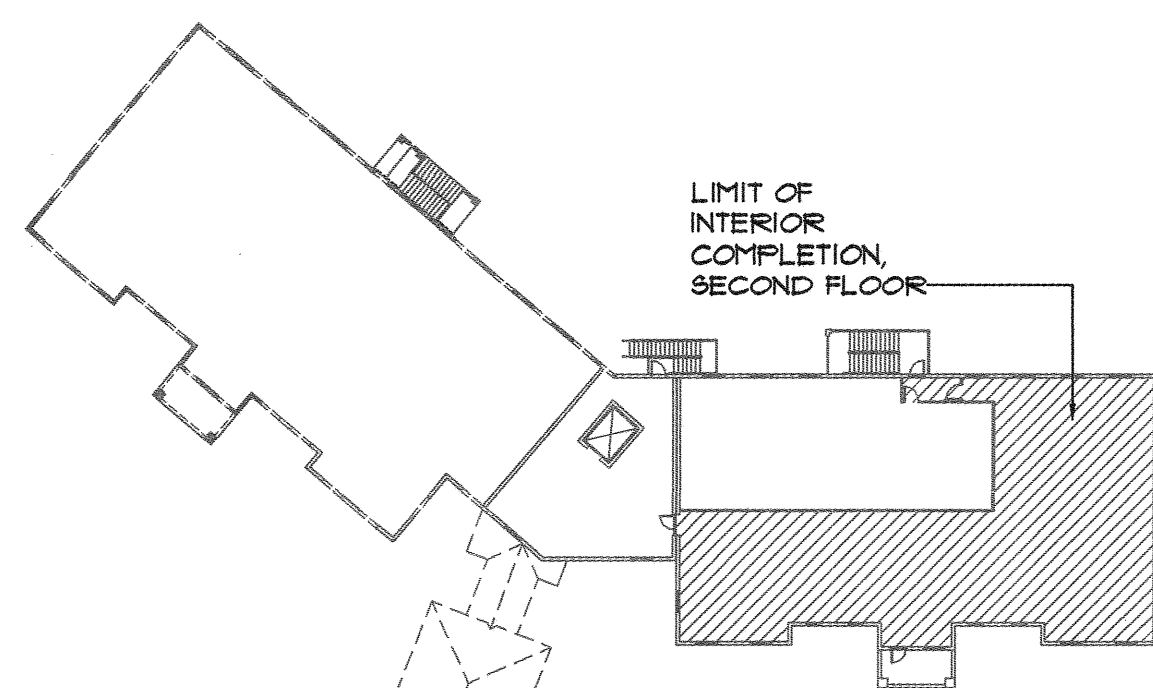
- MINIMUM CORRIDOR WIDTH:
TABLE 1004:
ACTUAL CORRIDOR WIDTH: 44'
48'

- INTERIOR FINISH REQUIREMENTS:
TABLE 803.3:
EXITS: CLASS C
EXIT ACCESS: CLASS C
OTHER SPACES: CLASS C

- PLUMBING FIXTURE REQUIREMENTS:
FLORIDA PLUMBING CODE 2001 EDITION SECTION 403
BASIS SECTION 1003 OCCUPANCY CONTENT

FIXTURE CALCULATIONS

	REQUIRED	PROVIDED
WATER CLOSET	2	3
LAVATORIES	2	3
URINAL	0	0
SERVICE SINK	0	0
DRINKING FOUNTAIN/ BOTTLED WATER	1	1

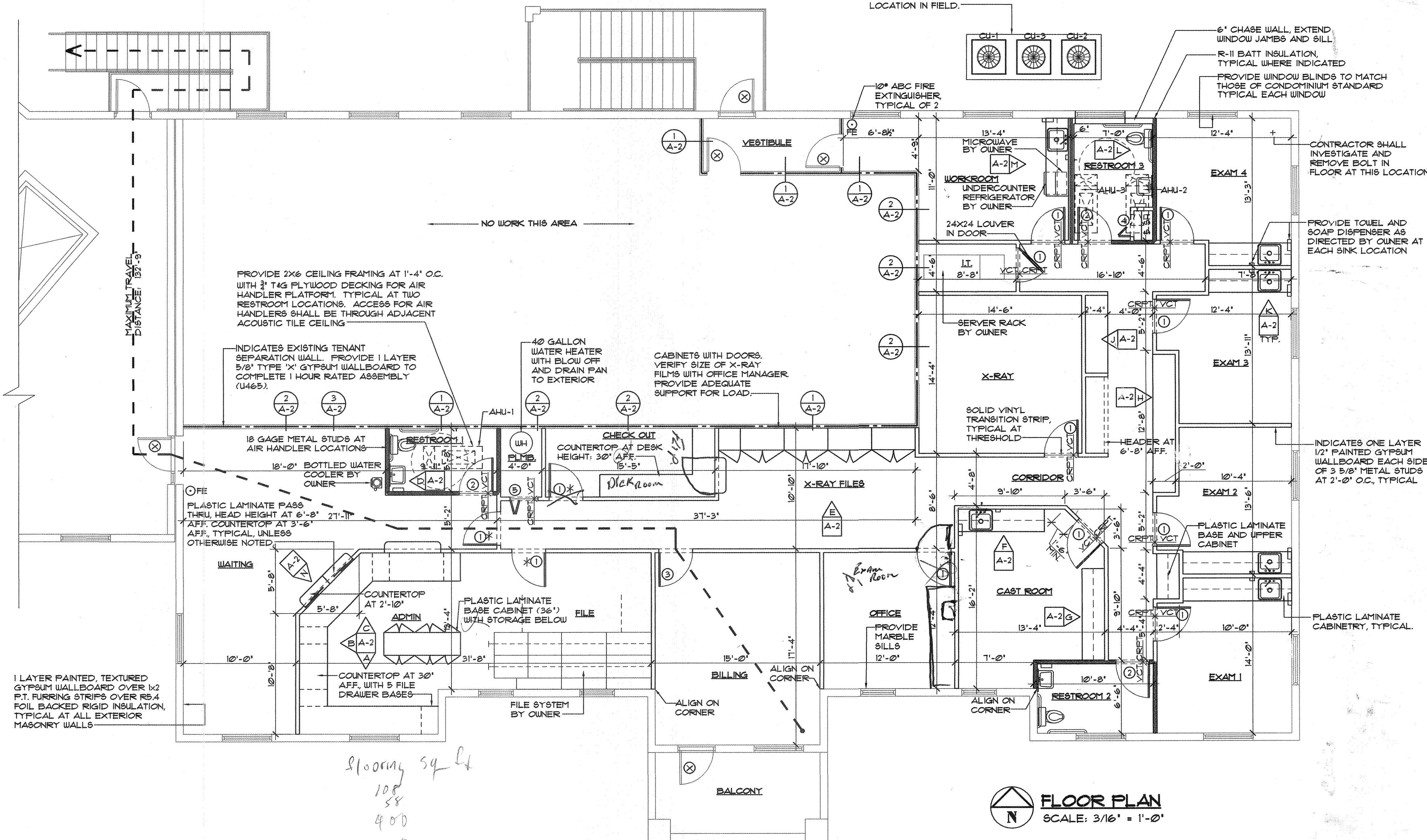


KEY PLAN
SCALE: 1" = 40'-0"

To the best of the Architect's or Engineer's knowledge, the plans and specifications comply with the applicable minimum building codes and applicable fire safety standards as determined by local authority in accordance with Chapters 553 and 633 of the Florida Statutes.

DRAWING INDEX

SHEET	DESCRIPTION
A-1	INDEX OF DRAWINGS, BUILDING CODE ANALYSIS, KEY PLAN, FLOOR PLAN
A-2	WALL SECTIONS, DETAILS, ROOM FINISH SCHEDULE, DOOR SCHEDULE
A-3	INTERIOR ELEVATIONS
E-1	ELECTRICAL NOTES, ELECTRICAL SYMBOL LEGEND
E-2	ELECTRICAL LIGHTING PLAN, LIGHTING FIXTURE SCHEDULE
E-3	ELECTRICAL POWER PLAN, PANEL SCHEDULE
M-1	MECHANICAL NOTES, MECHANICAL PLAN
M-2	MECHANICAL SCHEDULES, AIR HANDLER DETAILS
P-1	PLUMBING PLAN, PLUMBING FIXTURE SCHEDULE, PLUMBING NOTES, WATER HEATER PIPING DIAGRAM
FP-1	FIRE PROTECTION PLAN, DETAILS, FIRE PROTECTION SPECIFICATIONS



FLOOR PLAN
SCALE: 3/16" = 1'-0"

NOTE: CONTRACTOR SHALL REMOVE EXISTING ERRONEOUS IX FURRING AT UNDERSIDE OF TRUSSES

THIS PERMIT FOR INTERIOR COMPLETION ONLY. BUILDING SHELL IS EXISTING

100 North Washington Boulevard,
Suite 301, Sarasota, Florida, 34236

George Palermo Architect, Inc.
941.385.7777
941.954.4214 facsimile
e-mail: george.palermo@palermoarchitect.com

INTERIOR COMPLETION FOR:
SUNCOAST ORTHOPAEDIC
SURGERY AND SPORTS MEDICINE
LAKESIDE MEDICAL CENTER, SUITE 205

FILE: 2005013
DATE: 04/14/2005
REVISION:

SHEET: A-1
OF