

Soaring Rail

203 Stonemont Drive, Bristol, IN

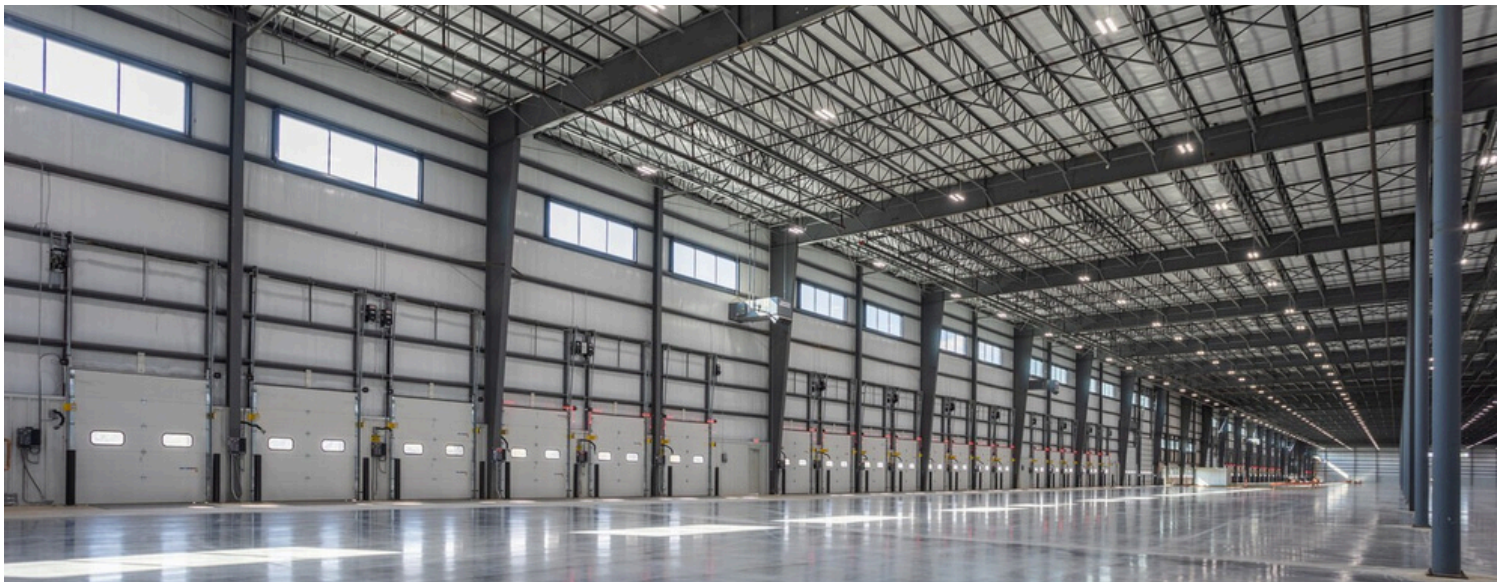


200,000 SF Warehouse (100,000 SF Suites)



Lease Rate: \$6.65 to \$6.95/SF/Year NNN

203 Stonemont Drive offers a one-of-a-kind opportunity to occupy up to 200,000 square feet of rail-served, industrial space in Bristol, Indiana. The 38' clear facility consists of five, 100,000-square-foot spec suites where each suite has 10 docks and two grade-level doors. One is 14-foot by 14-foot and another 16-foot by 18-foot. The facility is constructed in steel with eight-inch reinforced floors.



Ryan White, CCIM
Managing Broker
574.315.9615
RWhite@PinnProp.Com

Greg Carroll
Broker
574.360.9381
GCarroll@PinnProp.Com

Pinnacle Properties
418 S. Main Street
Elkhart, IN 46514



Information furnished regarding property for sale, rental or financing is from sources deemed reliable. But no warranty or representation is made as to the accuracy thereof and same is submitted subject to errors, omissions, change of price, rental or other conditions, prior sale, leased, financing or withdrawal without notice. No liability of any kind is to be imposed on the broker herein.



Four of the Five suites have direct access spurs with 2 doors and covered staging area. Allows for any size cars to be unloaded. Lines are serviced by Watco and owned by Norfolk Southern. CN and CSX located nearby.

Logistics – Railways



Norfolk Southern Corporation (NS)

Serving Elkhart, Goshen, Millersburg, New Paris
www.nscorp.com

CSX Transportation (CSX)

Serving Nappanee
www.csx.com

Elkhart & Western (EWR)

Serving Elkhart
www.pioneer-railcorp.com

Grand Elk Railroad (GDLK)

Serving Bristol, Elkhart
www.watcocompanies.com





Distance from Elkhart to ...

1	Indianapolis, Indiana	150 mi.
2	Warsaw, Indiana	25 mi.
3	South Bend, Indiana	25 mi.
4	Cincinnati, Ohio	255 mi.
5	Columbus, Ohio	225 mi.
6	Cleveland, Ohio	241 mi.
7	Toledo, Ohio	140 mi.
8	Detroit, Michigan	200 mi.
9	Grand Rapids, Michigan	102 mi.
10	Lansing, Michigan	138 mi.
11	Chicago, Illinois	120 mi.
12	Minneapolis, Minnesota	530 mi.
13	St. Louis, Missouri	392 mi.

