

# WESTSIDE OFFICE BUILDING

## 2229 BARRY AVENUE

PRIME WESTSIDE  
LOCATION



±15,990 SF  
(divisible to  
6,980 SF)  
remodeled  
2-story office  
building with  
ground level  
secure parking

Remodeled in 2019 With Striking Modern Interior  
Neighboring Warehouse Also Available at 2228 Barry Ave



**LANCELOT**  
COMMERCIAL

# WESTSIDE OFFICE BUILDING

## 2229 BARRY AVENUE

PRIME WESTSIDE  
LOCATION



### BUILDING FEATURES

- ±15,990 SF (divisible to 6,980 SF) Freestanding 2-Story Office Building
- Built in 2004 & Completely Renovated in 2019
- Bullpen Area With Polished Concrete Floors
- 22' Interior Ceiling Height, Skylights + LED Bay Lighting
- Private Offices + Cubicles, 2 Conference Rooms + Large Kitchen
- Secure Parking In Ground Level Garage

**\*\*±11,965 SF Neighboring Warehouse Also Available at 2228 Barry Avenue\*\***

**RENTAL RATE**  
**SPACE AVAILABLE**  
**PARKING**

2229 BARRY AVENUE, LOS ANGELES, CA 90064  
\$1.80 PSF MG  
±15,990 SF (DIVISIBLE TO 6,980 SF)  
18 STRIPED PARKING SPACES IN SECURE GARAGE



**LANCE LEVIN**  
**PRESIDENT**  
310.839.3333





# LOCATION OVERVIEW

## 2229 BARRY AVE

PRIME WESTSIDE  
LOCATION



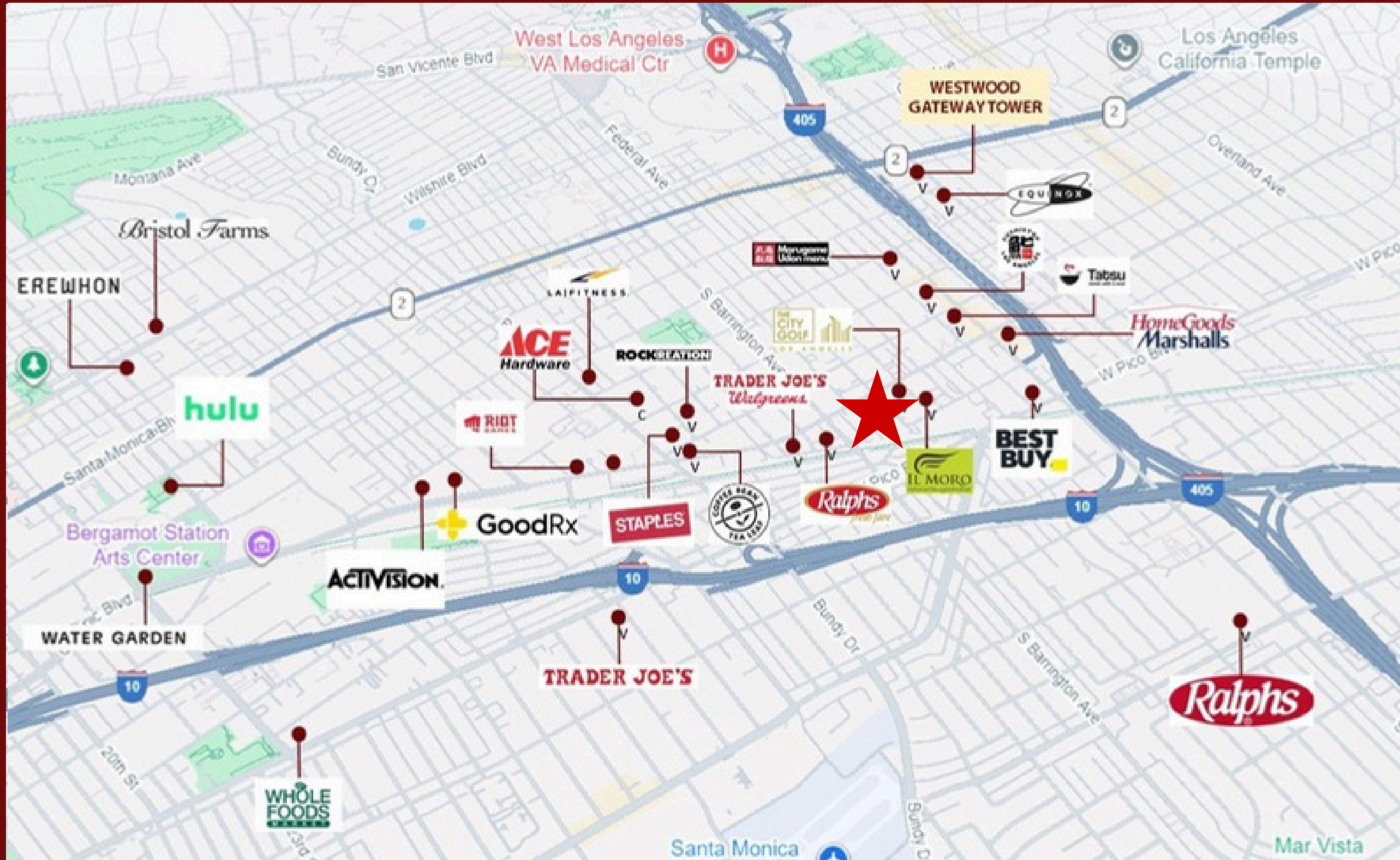
- 5 Blocks to the 405 Frwy On/Off Ramp at Pontius/Tennessee
- 5 Blocks to the 10 Frwy On/Off Ramp at Bundy Dr
- 5 Blocks to Metro Station at Bundy Dr + Exposition Blvd



**LANCELOT**  
COMMERCIAL

# NEIGHBORING TENANTS

PRIME WESTSIDE  
LOCATION



- Walking Distance to Fine Dining at Il Moro and Scores of Ramen + Sushi Hotspots in Japan Town Along Sawtelle Blvd, Including Tatsu Ramen, Sushi Stop, Marugame Udon + More!
- Close to LA Fitness, Rockreation (Climbing), City Golf, Several CrossFit Gyms + Pilates Studios
- Adjacent to Ralphs Fresh Fare + Trader Joe's
- Neighboring Corporate Tenants: Riot Games, Activision, GoodRx, Hulu, Roku + More!



**LANCELOT**  
COMMERCIAL





**GROUND FLOOR BULLPEN AREA**





**MEZZANINE LEVEL**





**EXTERIOR FRONT**



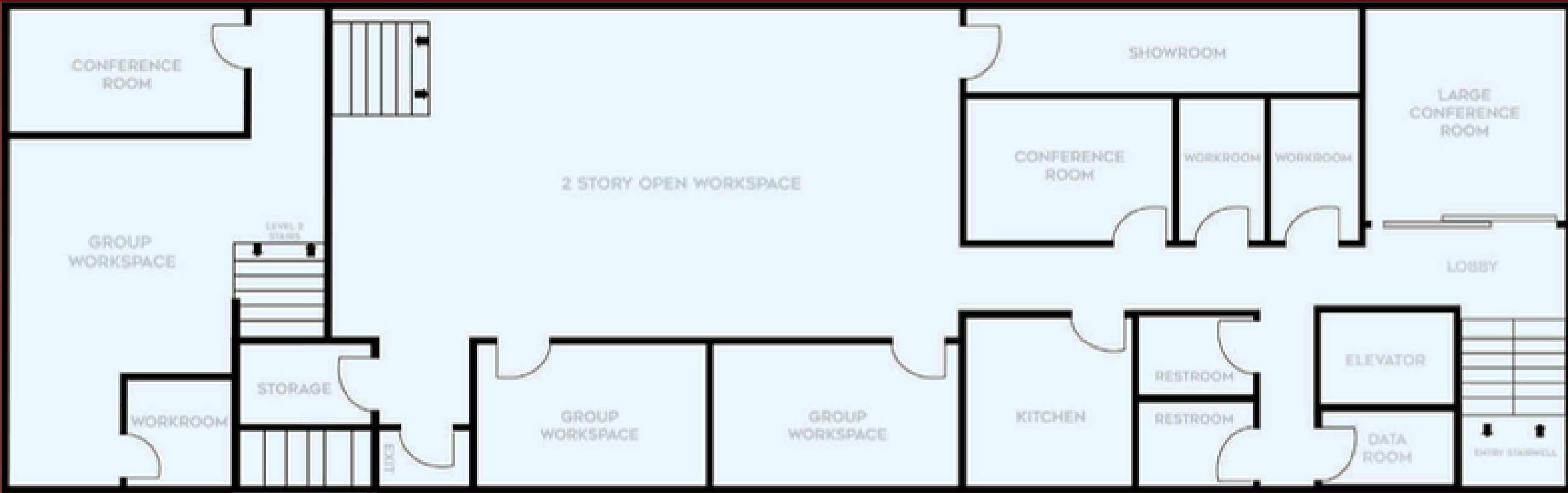
**EXTERIOR REAR**



**SECURE** PARKING



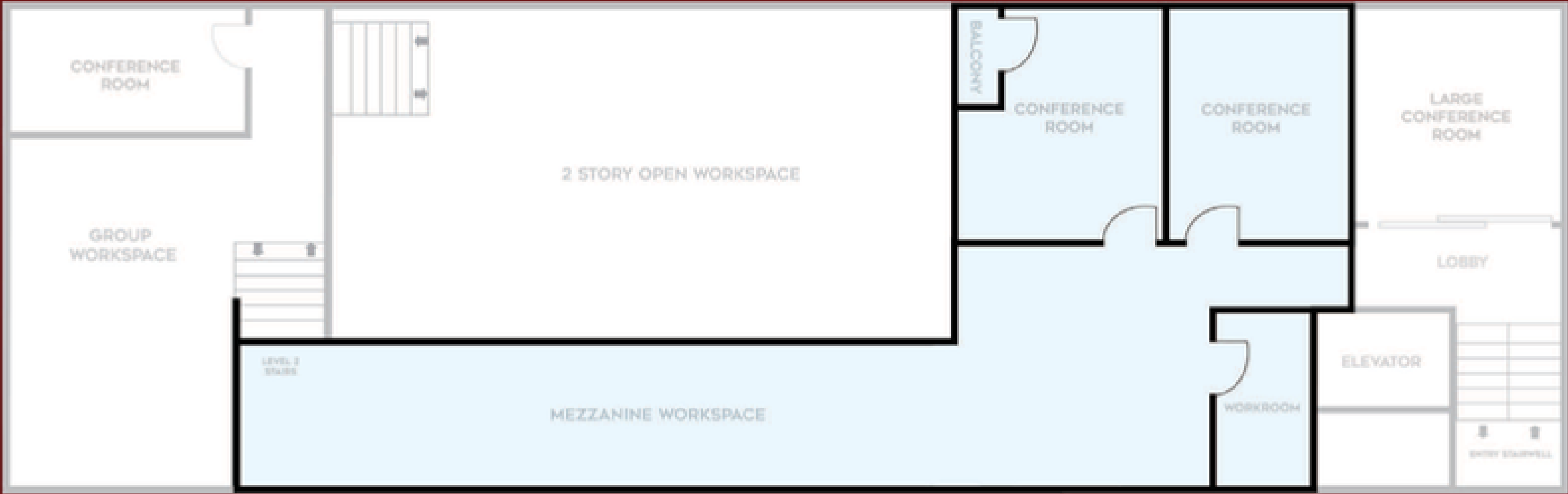




**1ST FLOOR PLAN**







**2ND FLOOR PLAN**





**OVER 750 TRANSACTIONS**  
**CLOSED. RELATIONSHIPS MATTER.**



Contact **Lance Levin, President**

**LANCE@LANCELOTCOMMERCIAL.COM | +1 (310) 713 3337**

**LANCELOTCOMMERCIAL.COM | @LANCELOTCOMMERCIAL**

**DRE#01128388**

