

FOR LEASE

SWAN LAKE FLEX



MOUNTAIN WEST
COMMERCIAL REAL ESTATE

RAND SARGENT

rsargent@mwcre.com
direct 801.989.1600
[View Profile](#)

ASHLEY ALLRED

aallred@mwcre.com
direct 801.309.6889
[View Profile](#)

PROPERTY DETAILS

1660 W GORDON AVE, STE 3&4, LAYTON, UT 84041

- For Lease
- \$1.10 PSF NNN
- 6,600 SF available
- 1,982 SF office
- 4,618 SF warehouse
- M-2 Zoning
- Two Overhead Doors (12'x12')
- Clear Height 12'-14'
- Current Buildout includes 4 offices, large conference room, full kitchen breakroom, and M/W restrooms
- Parking: Approx 2.5/1000
- Warehouse racking and forklift can be purchased from vacating Tenant
- Power: 3 phase power - tenant to confirm



**FULL SERVICE
COMMERCIAL REAL ESTATE**

1755 East 1450 South
Clearfield, UT 84015
Office 801.456.8800
www.mwcre.com



MOUNTAIN WEST
COMMERCIAL REAL ESTATE

RAND SARGENT

rsargent@mwcre.com
direct 801.989.1600
[View Profile](#)

ASHLEY ALLRED

aallred@mwcre.com
direct 801.309.6889
[View Profile](#)



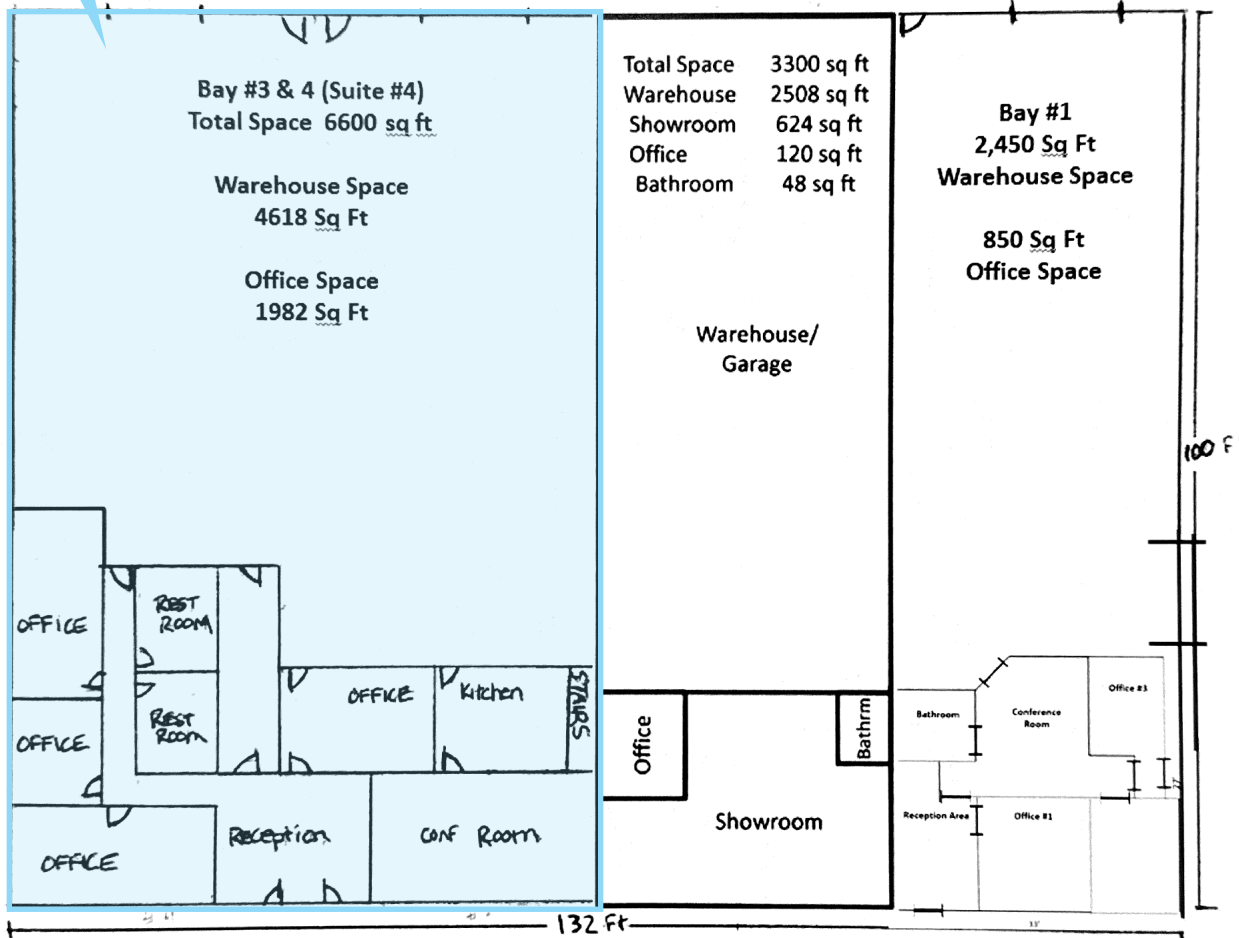
**FULL SERVICE
COMMERCIAL REAL ESTATE**

1755 East 1450 South
Clearfield, UT 84015
Office 801.456.8800
www.mwcre.com

SITE PLAN

SWAN LAKE FLEX

AVAILABLE



MOUNTAIN WEST
COMMERCIAL REAL ESTATE

RAND SARGENT

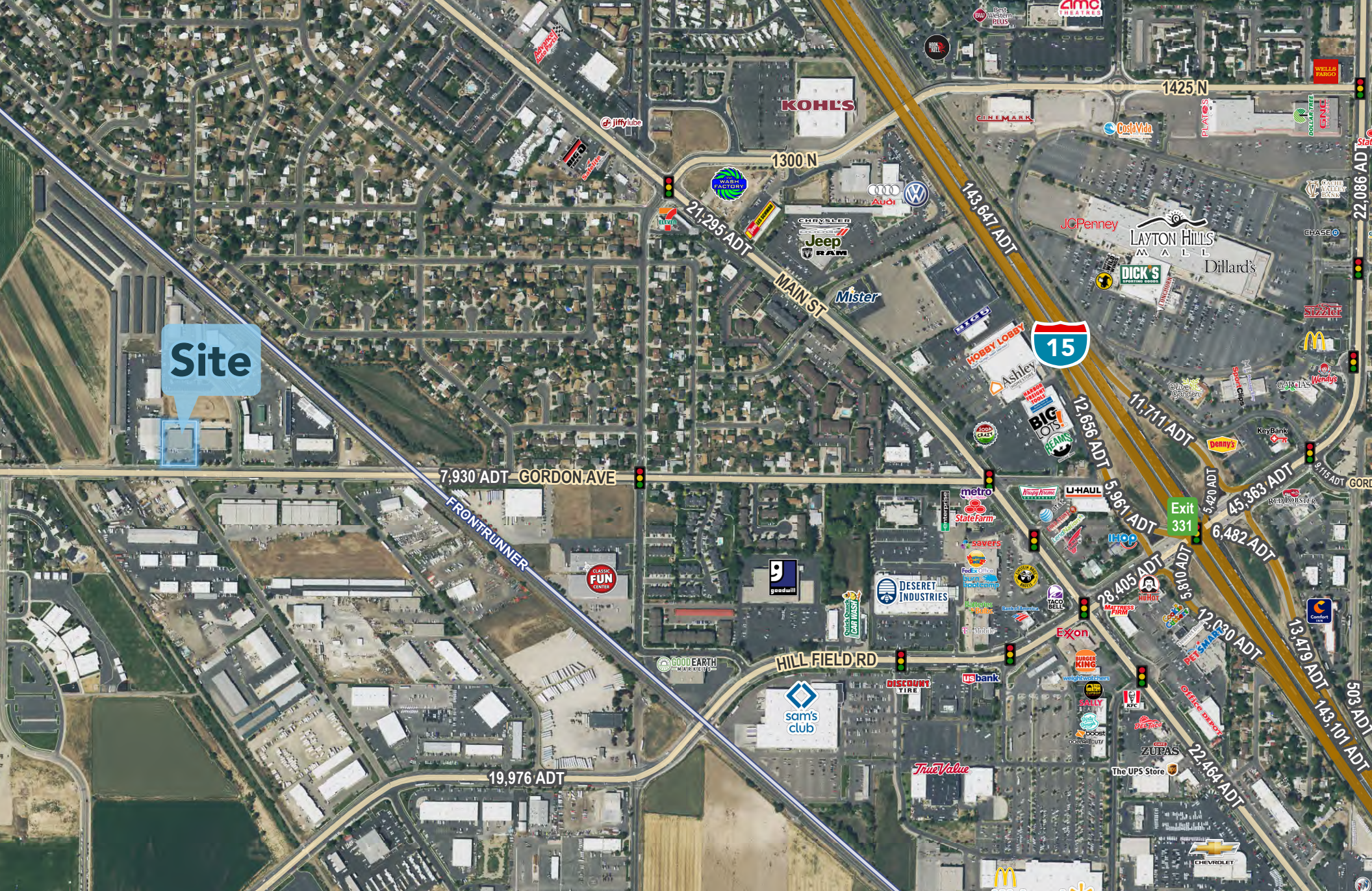
rsargent@mwcre.com
direct 801.989.1600
[View Profile](#)

ASHLEY ALLRED

aallred@mwcre.com
direct 801.309.6889
[View Profile](#)

**FULL SERVICE
COMMERCIAL REAL ESTATE**

1755 East 1450 South
Clearfield, UT 84015
Office 801.456.8800
www.mwcre.com



Site



MOUNTAIN WEST
COMMERCIAL REAL ESTATE

RAND SARGENT
rsargent@mwcre.com
direct 801.989.1600
[View Profile](#)

ASHLEY ALLRED
aallred@mwcre.com
direct 801.309.6889
[View Profile](#)

**FULL SERVICE
COMMERCIAL REAL ESTATE**
312 East South Temple
Salt Lake City, UT 84111
Office 801.456.8800
www.mwcre.com

This statement with the information it contains is given with the understanding that all negotiations relating to the purchase, renting or leasing of the property described above shall be conducted through this office. The above information while not guaranteed has been secured from sources we believe to be reliable.