



**Investment
Properties
Corporation**

F O R L E A S E

MEDICAL OFFICE SPACE

671 GOODLETTE FRANK ROAD | NAPLES, FL. 34102



Located conveniently in Downtown Naples FL, on the west side of Goodlette-Frank Road between 6th and 7th Avenue North. NCH Hospital and 5th Avenue South are within a short distance from the property.

CONTACT (239) 261-3400

Clint Sherwood, CCIM, ext. 179 clint@ipcnaples.com

John Cheffy, ext. 182 john@ipcnaples.com

Investment Properties Corporation of Naples
3838 Tamiami Trail North Suite 402
Naples Florida 34103-3586

Tel: 239-261-3400 Fax: 249-261-7579 www.ipcnaples.com

Licensed Real Estate Broker

The statement and figures presented herein, while not guaranteed, are secured from sources we believe authoritative. Subject to prior sale, lease, withdrawal and price change without notice.

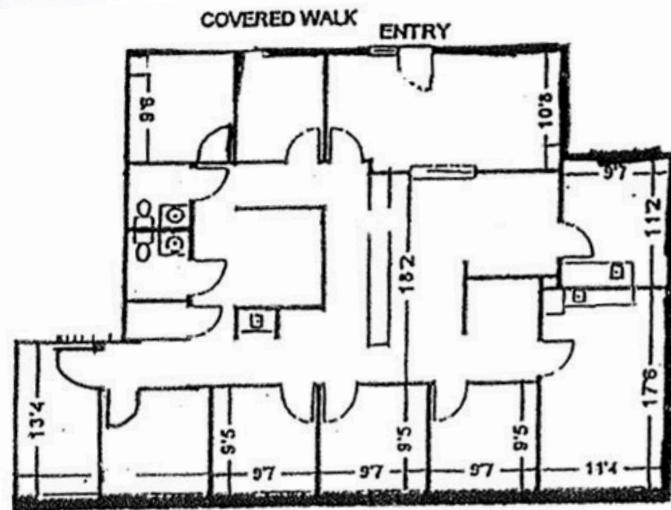


SUITE #	SF	PSF/YR	EST. 2025 CAM	AVAILABLE
160	2,100 +/-	\$29 NNN	\$10.53	Immediately
200	2,545 +/-	\$29 NNN	\$10.53	Immediately

SUITE 160

2,100 +/- SF

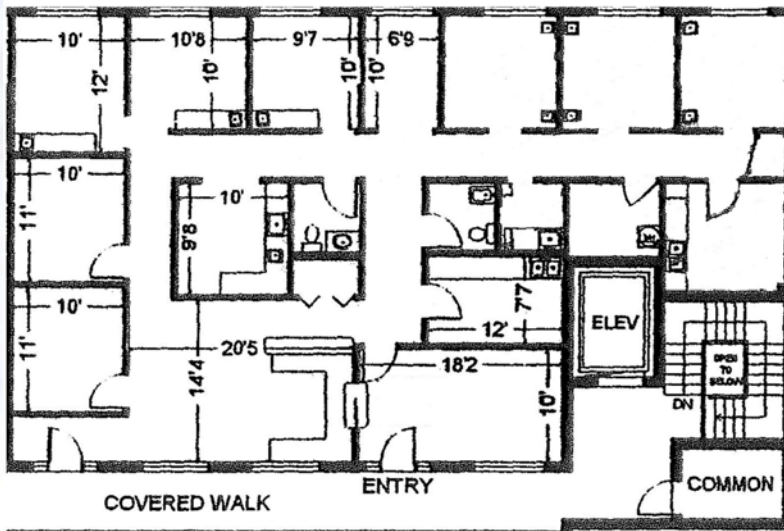
Medical office space improved and ready for occupancy.



SUITE 200

2,545 +/- SF

Medical office space improved and ready for occupancy.





Investment Properties Corporation

671 GOODLETTE FRANK RD

EXTERIOR PHOTOS

671 GOODLETTE MEDICAL PARK

SUITE 110	LEGACY FAMILY DOCTORS
SUITE 115	MM TC WELLNESS CENTER
SUITE 120	BRIAN D. WOLFF, M.D.
SUITE 130	CELEBRATION COMMUNITY BEACH CHURCH
SUITE 140	THE CENTER OF BEING
SUITE 150	NAPLES INJURY TREATMENT CENTER
SUITE 160	VACANT
SUITE 200	VACANT
SUITE 220	CELEBRATION COMMUNITY BEACH CHURCH
SUITES 230-240	NAW NAPLES AESTHETIC WELLNESS INSTITUTE



Investment Properties Corporation of Naples
3838 Tamiami Trail North Suite 402
Naples Florida 34103-3586
Tel: 239-261-3400 Fax: 249-261-7579 www.ipcnaples.com

Licensed Real Estate Broker

The statement and figures presented herein, while not guaranteed, are secured from sources we believe authoritative. Subject to prior sale, lease, withdrawal and price change without notice.



KEY FACTS

95,305

Population



44,873

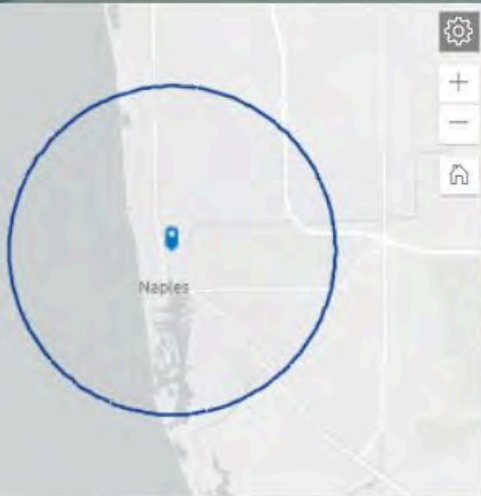
Households

57.2

Median Age

\$67,618

Median Disposable Income



Source: U.S. Census Bureau, 2020 Redistricting Data (P.L. 94-171). U.S. Census Bureau 2010 decennial Census data converted by Esri into 2020 geography.

KEY FACTS

95,305

Total Population

65,696

Housing Units

1,183.4

Population Density

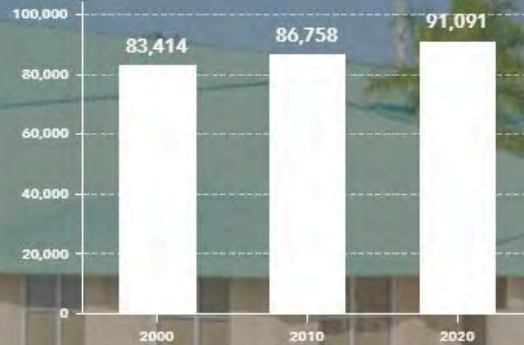
2.08

Average Household Size

59.8

Diversity Index

HOUSEHOLD POPULATION



INCOME



HOUSING



\$14,661

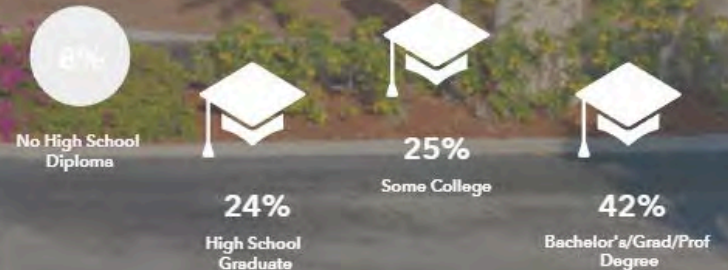
Mortgage Payment & Basics



\$7,219

Average Rent

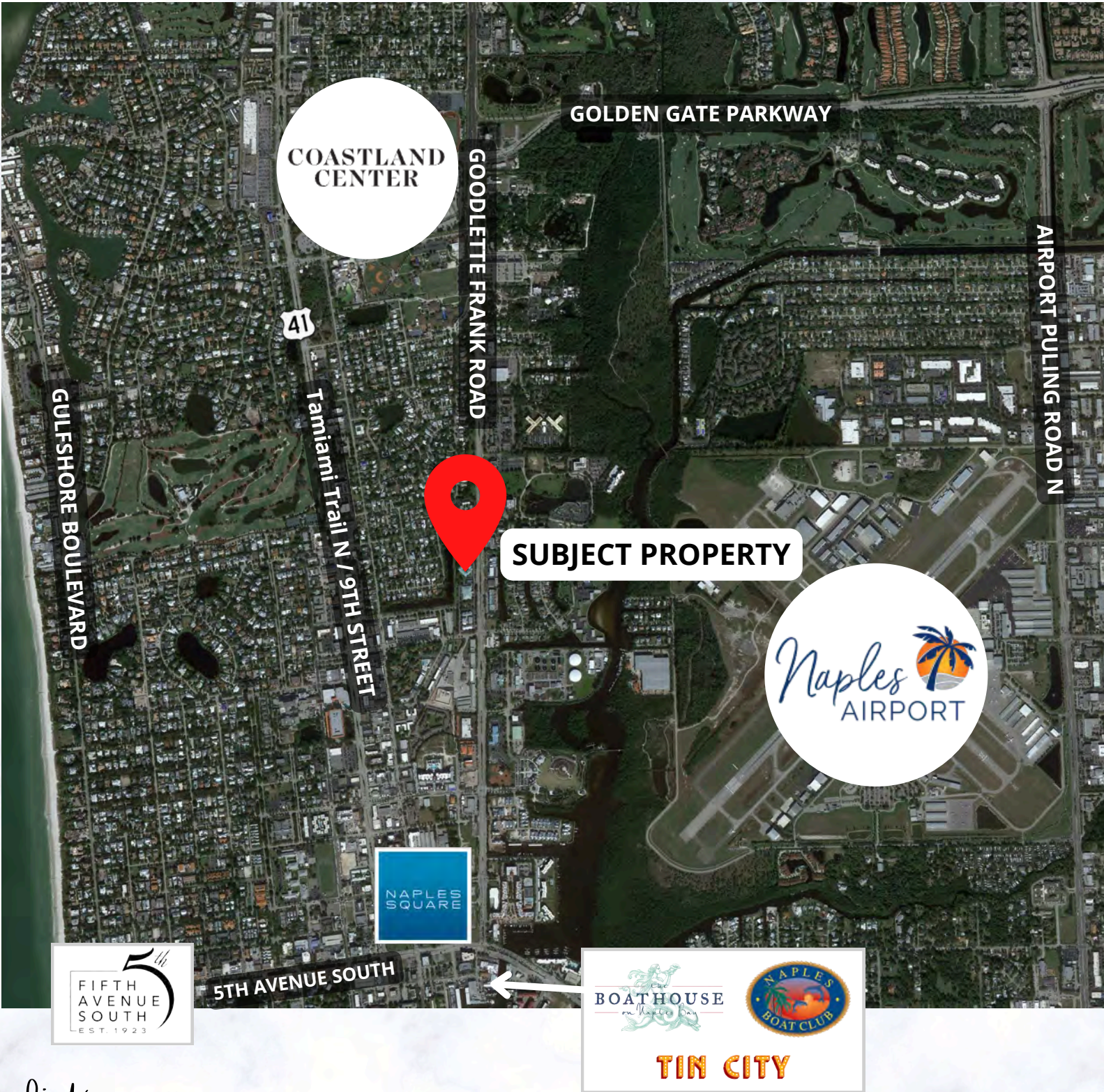
EDUCATION





**Investment
Properties
Corporation**

671 GOODLETTE FRANK RD LOCATOR MAP



click here! →



CONTACT (239) 261-3400

Clint Sherwood, CCIM, ext. 179 | John Cheffy, ext. 182
clint@ipcnaples.com | john@ipcnaples.com