

Sharon Promenade

1465-1485 Peachtree Parkway
Cumming, Georgia 30041



FOR
LEASE



Leasing Contacts

Allie Hodge Motz
678-501-5342
allie@riverwoodproperties.com

Property Highlights

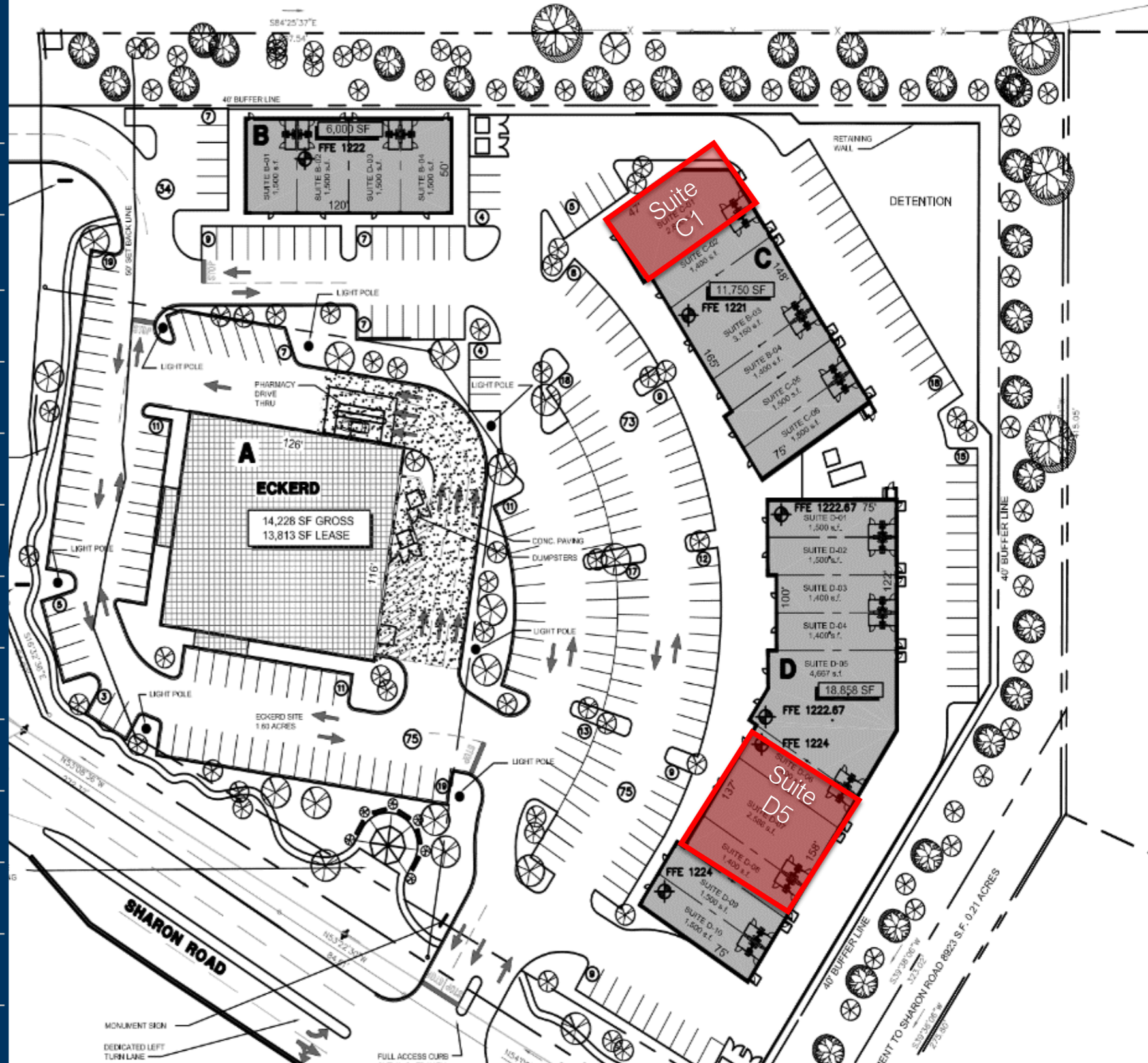
- Sharon Promenade is located on Peachtree Parkway, just 2 miles East of Georgia Hwy 400, in a high-density corridor of Forsyth County.
- This center consists of three buildings on a L-shaped site.
- The site has ample frontage and visibility along two primary thoroughfares within the neighborhood.
- 32,732 VPD
- Zoned HB | Highway Business
- Retail Space Available | 2,400 – 5,386 SF

Sharon Promenade TENANTS

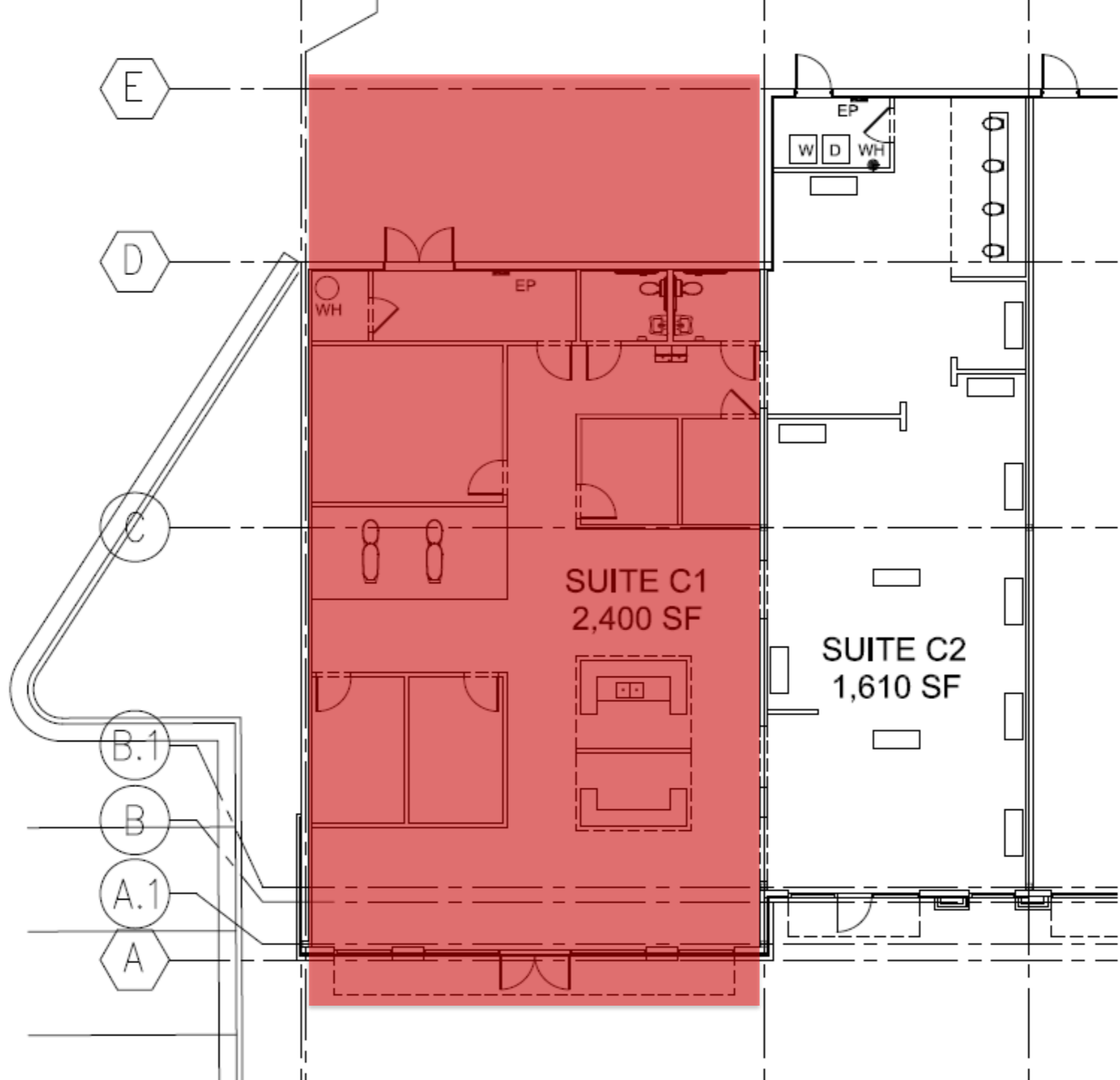
B1	Subway	1,500
B3	Liquor Store	3,000
B4	Massage Therapy	1,500
C1	Retail Space Available	2,400
C2	Due Hair	1,610
C3	Forsyth Family Dentistry	2,083
C4	Poshe Nail Spa	1,832
C5	Thai Basil	3,525
D1	Sunshine Pediatrics	1,500
D2	Kitani Sushi Restaurant	1,500
D4	Black Diamond Bar & Grill	7,524
D5	Retail Space Available	5,386
D7	Tomkins Family Chiropractor	1,500
D8	Matt's Custom Care Cleaners	1,500

GLA: 36,360 SF

Availability: 2,400 – 5,386 SF



SHARON PROMENADE Site Plan



SHARON PROMENADE

Site Plan

AREA DEMOGRAPHICS



2023
Population

1 MILE	6,302
3 MILE	58,038
5 MILE	163,322



2023 Daytime
Population

1 MILE	1,837
3 MILE	27,696
5 MILE	87,363



Household 2023

1 MILE	2,145
3 MILE	19,188
5 MILE	54,999



Household
Income

1 MILE	\$276,478
3 MILE	\$200,141
5 MILE	\$189,373



SHARON PROMENADE

Trade Area Overview