



**THALHIMER**

RETAIL FOR LEASE  
**Lake Drive Plaza**

915 Hardy Road | Vinton, VA 24179

Last Space Available  
1,540 SF



For more information, contact:

**WYATT POATS**

Senior Associate  
540 767 3008  
[wyatt.poats@thalhimer.com](mailto:wyatt.poats@thalhimer.com)

**ALICIA BROWN**

First Vice President  
804 697 3483  
[alicia.brown@thalhimer.com](mailto:alicia.brown@thalhimer.com)

11180 W. Broad St.  
Glen Allen, VA 23060  
[www.thalhimer.com](http://www.thalhimer.com)

Independently Owned and Operated / A Member of the Cushman & Wakefield Alliance

Cushman & Wakefield | Thalhimer © 2015. No warranty or representation, express or implied, is made to the accuracy or completeness of the information contained herein, and same is submitted subject to errors, omissions, change of price, rental or other conditions, withdrawal without notice, and to any special listing conditions imposed by the property owner(s). As applicable, we make no representation as to the condition of the property (or properties) in question.





**Property Features**

- Kroger and Tractor Supply anchored 163,000 SF shopping center
- Join our New Junior anchor tenant AutoZone
- Space available 1,540 SF – prior salon
- Dominant location within submarket
- Multiple access points with signalized entrance

**Traffic Counts**

|                               |            |
|-------------------------------|------------|
| Hardy Rd/Vinyard Rd E         | 34,000 VPD |
| Bypass Rd/Roop St SW          | 24,000 VPD |
| Bypass Rd/E Washington Ave NE | 38,000 VPD |

**Demographics**

|                    | 1 Mile   | 3 Miles  | 5 Miles  |
|--------------------|----------|----------|----------|
| Population         | 6,823    | 35,698   | 93,048   |
| No. of Households  | 2,983    | 15,181   | 40,755   |
| Avg. HH Income     | \$52,890 | \$51,150 | \$53,480 |
| Daytime Population | 6,207    | 50,613   | 111,163  |

For more information, contact:

**WYATT POATS**

Senior Associate  
540 767 3008  
wyatt.poats@thalhimer.com

**ALICIA BROWN**

First Vice President  
804 697 3483  
alicia.brown@thalhimer.com

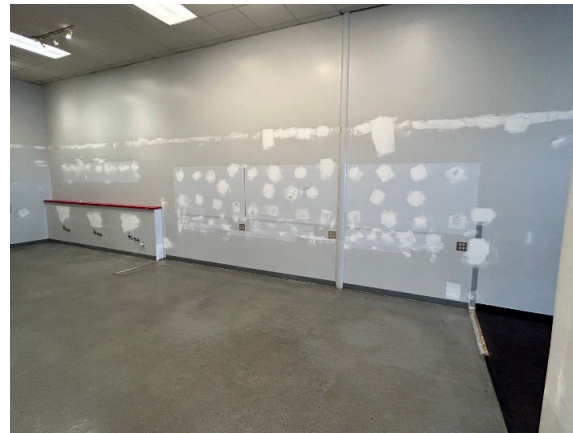
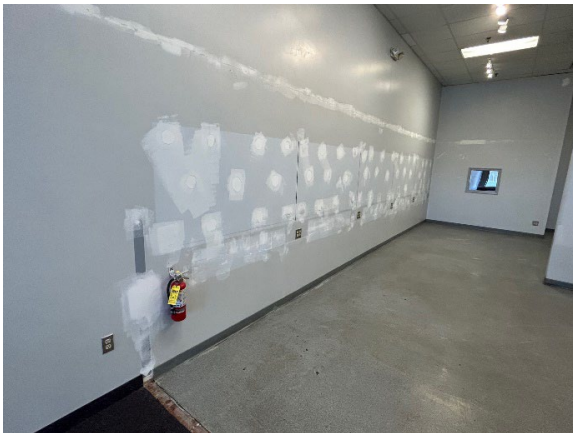
11180 W. Broad St.  
Glen Allen, VA 23060  
[www.thalhimer.com](http://www.thalhimer.com)



**THALHIMER**

# RETAIL FOR LEASE Lake Drive Plaza

915 Hardy Road | Vinton, VA 24179



For more information, contact:

**WYATT POATS**

Senior Associate

540 767 3008

[wyatt.poats@thalhimer.com](mailto:wyatt.poats@thalhimer.com)

**ALICIA BROWN**

First Vice President

804 697 3483

[alicia.brown@thalhimer.com](mailto:alicia.brown@thalhimer.com)

11180 W. Broad St.

Glen Allen, VA 23060

[www.thalhimer.com](http://www.thalhimer.com)

Independently Owned and Operated / A Member of the Cushman & Wakefield Alliance

Cushman & Wakefield | Thalhimer © 2015. No warranty or representation, express or implied, is made to the accuracy or completeness of the information contained herein, and same is submitted subject to errors, omissions, change of price, rental or other conditions, withdrawal without notice, and to any special listing conditions imposed by the property owner(s). As applicable, we make no representation as to the condition of the property (or properties) in question.



**RETAIL FOR LEASE**  
**Lake Drive Plaza**

915 Hardy Road | Vinton, VA 24179

**Tenant List**

| #      | Tenant                   | SF    |
|--------|--------------------------|-------|
| 1      | Dunkin Donuts            |       |
| 2      | Sprint                   |       |
| 3      | Nails N Rays             | 1,400 |
| 4      | Elite Therapy            | 1,085 |
| 5      | Marcos's Pizza           | 1,225 |
| 6/7    | China Wall Chinese       |       |
| 8      | Subway                   |       |
| 9      | Tractor Supply Co.       |       |
| 10     | Available (Former Salon) | 1,540 |
| 11     | Cricket                  |       |
| 16     | Kroger                   |       |
| 17     | Dollar Tree              |       |
| 17A    | Goodwill                 |       |
| 18     | AutoZone                 | 6,400 |
| N.A.P. | Verizon                  |       |
| FS1    | Kroger Fuel Pad          |       |



For more information, contact:

**WYATT POATS**

Senior Associate  
540 767 3008  
wyatt.poats@thalhimer.com

**ALICIA BROWN**

First Vice President  
804 697 3483  
alicia.brown@thalhimer.com

11180 W. Broad St.  
Glen Allen, VA 23060  
[www.thalhimer.com](http://www.thalhimer.com)



RETAIL FOR LEASE  
Lake Drive Plaza

915 Hardy Road | Vinton, VA 24179

VINTON AERIAL



For more information, contact:

**WYATT POATS**  
Senior Associate  
540 767 3008  
wyatt.poats@thalhimer.com

**ALICIA BROWN**  
First Vice President  
804 697 3483  
alicia.brown@thalhimer.com

11180 W. Broad St.  
Glen Allen, VA 23060  
[www.thalhimer.com](http://www.thalhimer.com)

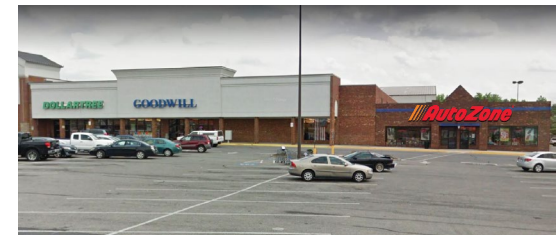




**THALHIMER**

**RETAIL FOR LEASE**  
**Lake Drive Plaza**

915 Hardy Road | Vinton, VA 24179



For more information, contact:

**WYATT POATS**

Senior Associate

540 767 3008

[wyatt.poats@thalhimer.com](mailto:w Wyatt.Poats@thalhimer.com)

**ALICIA BROWN**

First Vice President

804 697 3483

[alicia.brown@thalhimer.com](mailto:alicia.brown@thalhimer.com)

11180 W. Broad St.

Glen Allen, VA 23060

[www.thalhimer.com](http://www.thalhimer.com)

*Independently Owned and Operated / A Member of the Cushman & Wakefield Alliance*

*Cushman & Wakefield | Thalhimer © 2015. No warranty or representation, express or implied, is made to the accuracy or completeness of the information contained herein, and same is submitted subject to errors, omissions, change of price, rental or other conditions, withdrawal without notice, and to any special listing conditions imposed by the property owner(s). As applicable, we make no representation as to the condition of the property (or properties) in question.*