

WAREHOUSE for LEASE



GC

REALTY & DEVELOPMENT, LLC.



31,500 SF Available & Divisible

92—122 E Messner Drive, Wheeling, IL 60090

Ian Pattison & Brad Bullington

GC Realty & Development LLC 219 E Irving Park Rd, Roselle, IL 60172

All information deemed accurate but not guaranteed.

\$10.50/SF MG

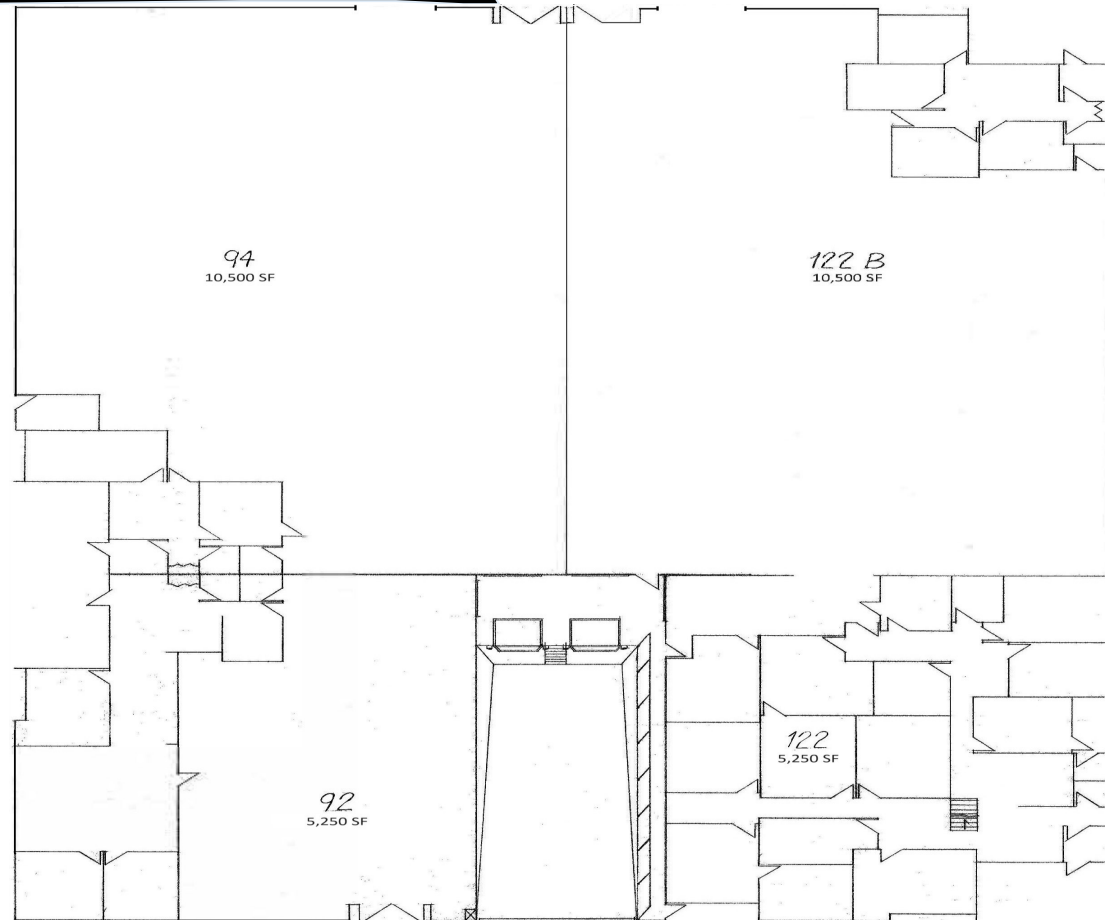


GC

REALTY & DEVELOPMENT, LLC.

SUITE INFORMATION

- ◆ **Delivery:** Summer 2024
- ◆ **Size:** 31,500 SF
- ◆ **Office Area:** ~25%
- ◆ **Clear Height:** 16 FT
- ◆ **Loading:** (2) Private Interior Docks
(2) Private Drive-In-Doors
(8' x 10') & (10' x 12')
(2) Double Service Doors
- ◆ **Power:** 200 Amps
- ◆ **Sprinklers:** Wet
- ◆ **Zoning:** I-1



SUITE SUMMARY

West Wing of a Beautiful Multi-Tenant Industrial Building Available Providing Exclusive Full-Size Heated Interior Docks & Drive-In Loading with Ample Parking & Office Space Perfect for Headquarters

Ian Pattison (847) 650-3124 ian@gcrealtyinc.com

Brad Bullington brad@gcrealtyinc.com

www.bradbullington.com