

For Sale
Office or Residential Condo

NAIBlack

**SALE PRICE
REDUCED**

Freeman Center

170 S Lincoln Street, Suite 300 & 400
Spokane, Washington 99201

Property Description

Condo Size: 4,200 - 8,400± SF

- Unit 300: 4,200± SF
- Parcel ID #: 35192.1923
- Unit 400: 4,200± SF
- Parcel ID #: 35192.1924

Unit 300 Improvements:

- 16+ Chair Conference Rm
- Kitchenette
- 2-Executive Office Suites
- Open Sales Flr. (current configuration with 17-cubicle stations)
- ADA RR

Unit 400 Improvements:

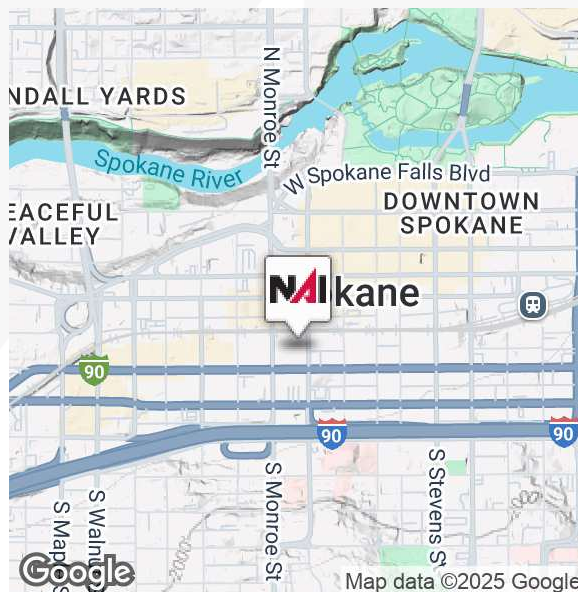
- 8-10 Chair Conference Rm
- Kitchenette
- 3-Executive Office Suites
- 2-ADA RR's
- Open Sales Flr. (current configuration with 11-cubicle stations and 4-person reception)

Building Amenities:

- Secured Entry and Elevator
- 4-Car Parks in Secured Garage
- Direct Elev. Access from Garage
- Exterior Building Name Plate Signage
- Residential Living Allowed
- Exposed Brick and Beam

~~Sale Price: \$675,000 per unit~~

Sale Price: \$575,000 per unit (\$137/SF)



For more information

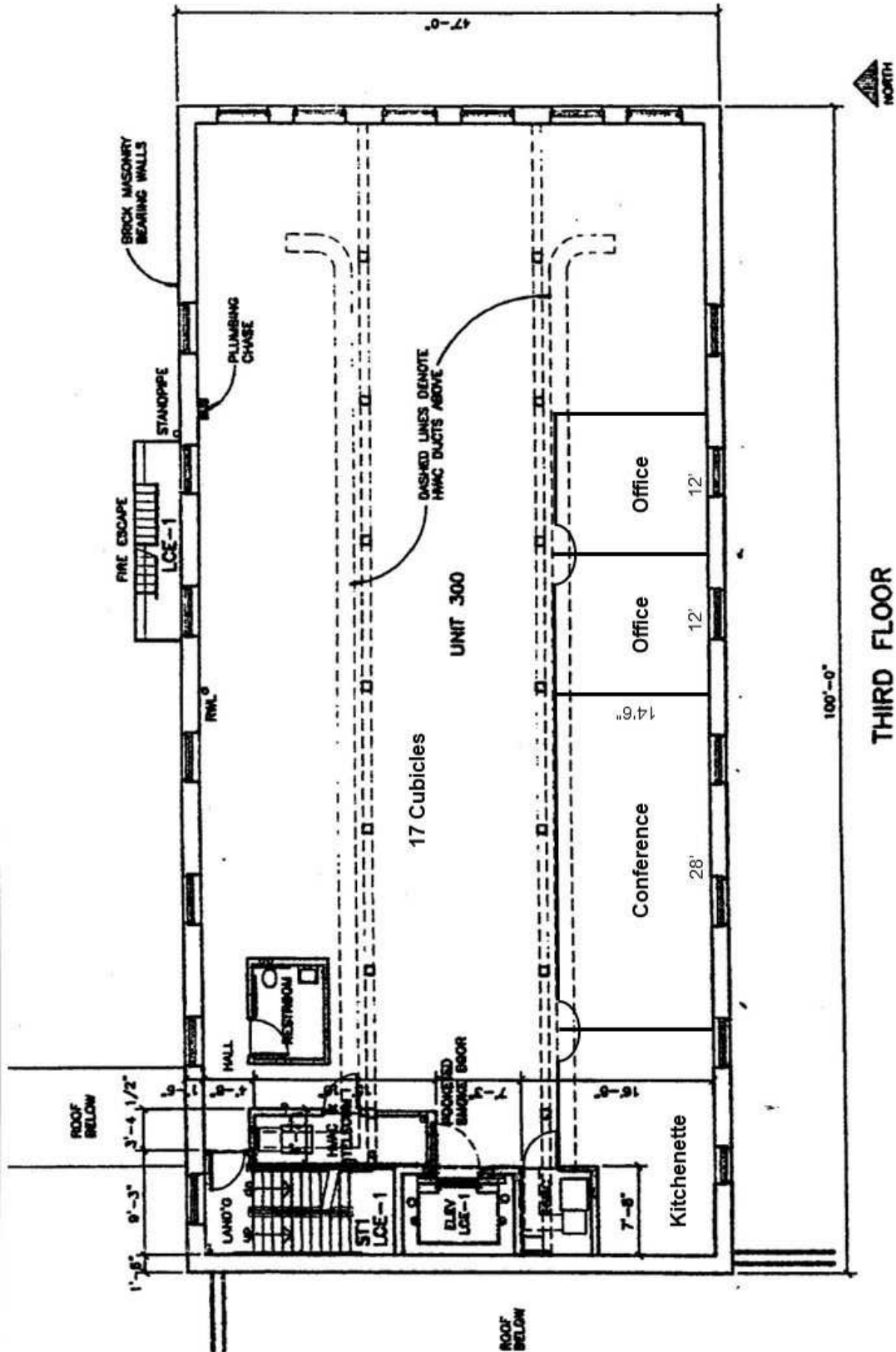
Mark C. McLees

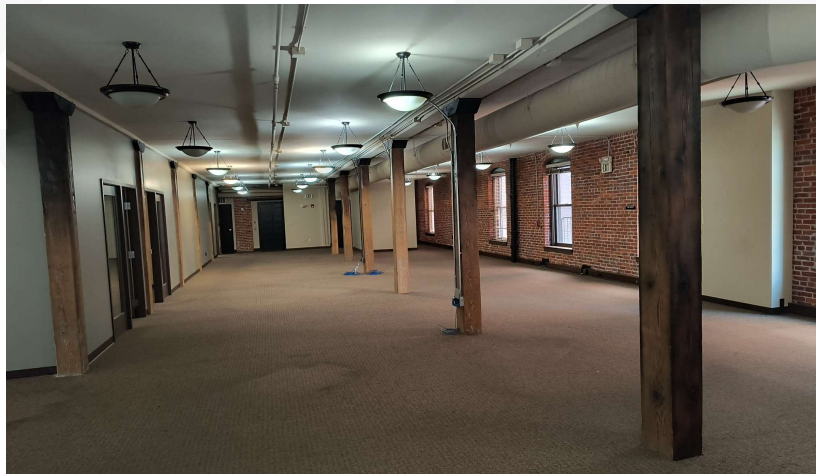
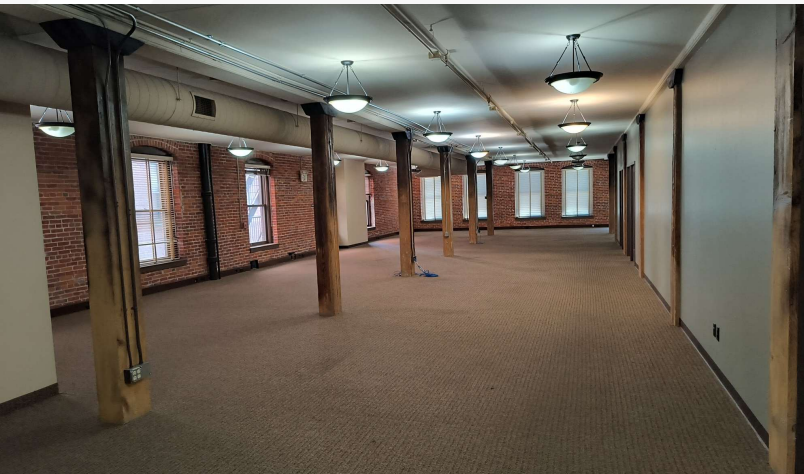
O: 509 622 3554

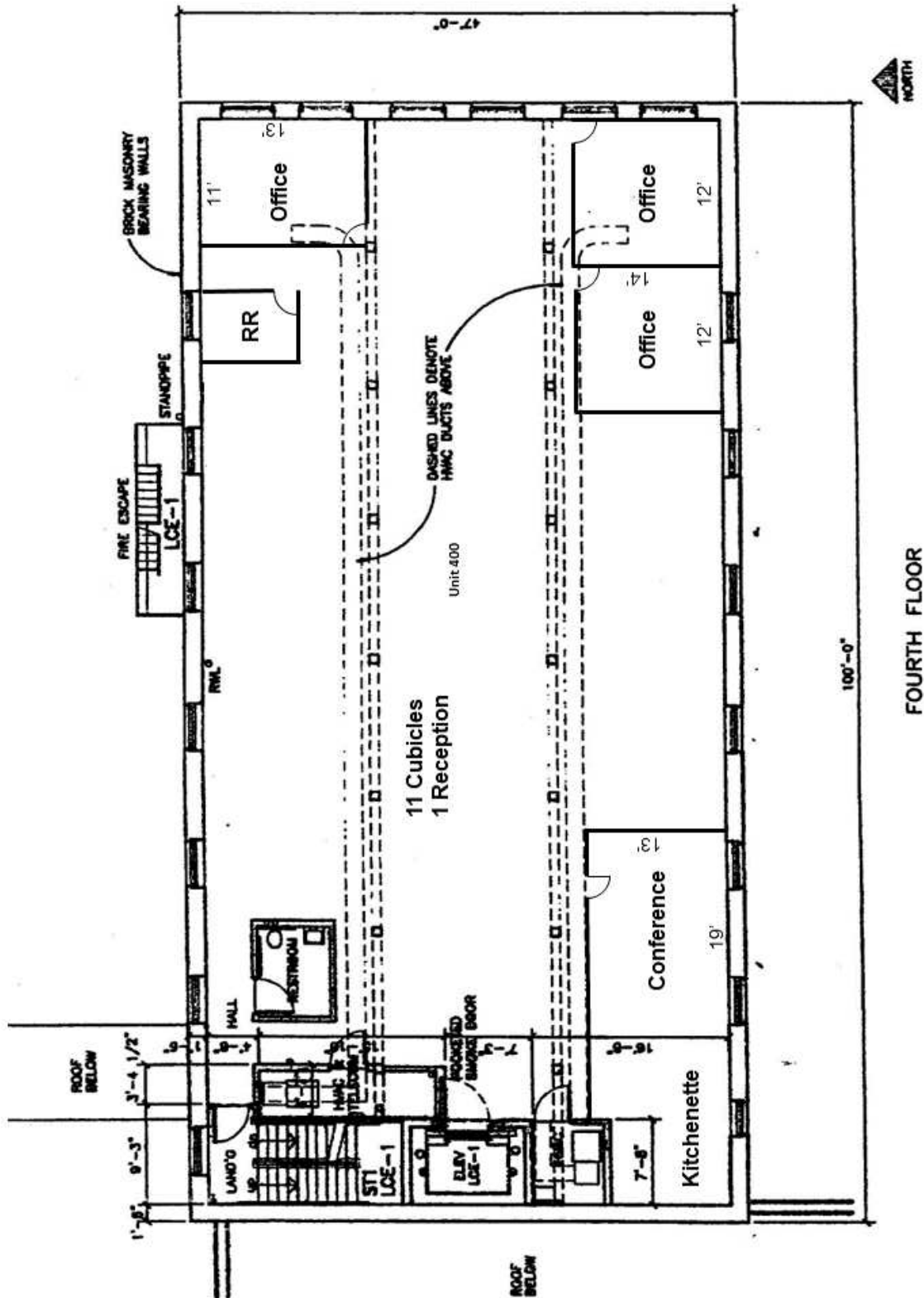
mmclees@naiblack.com

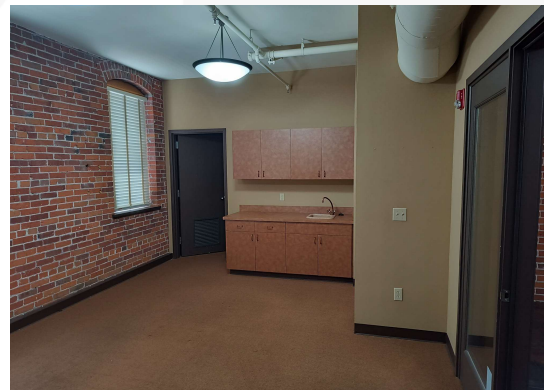
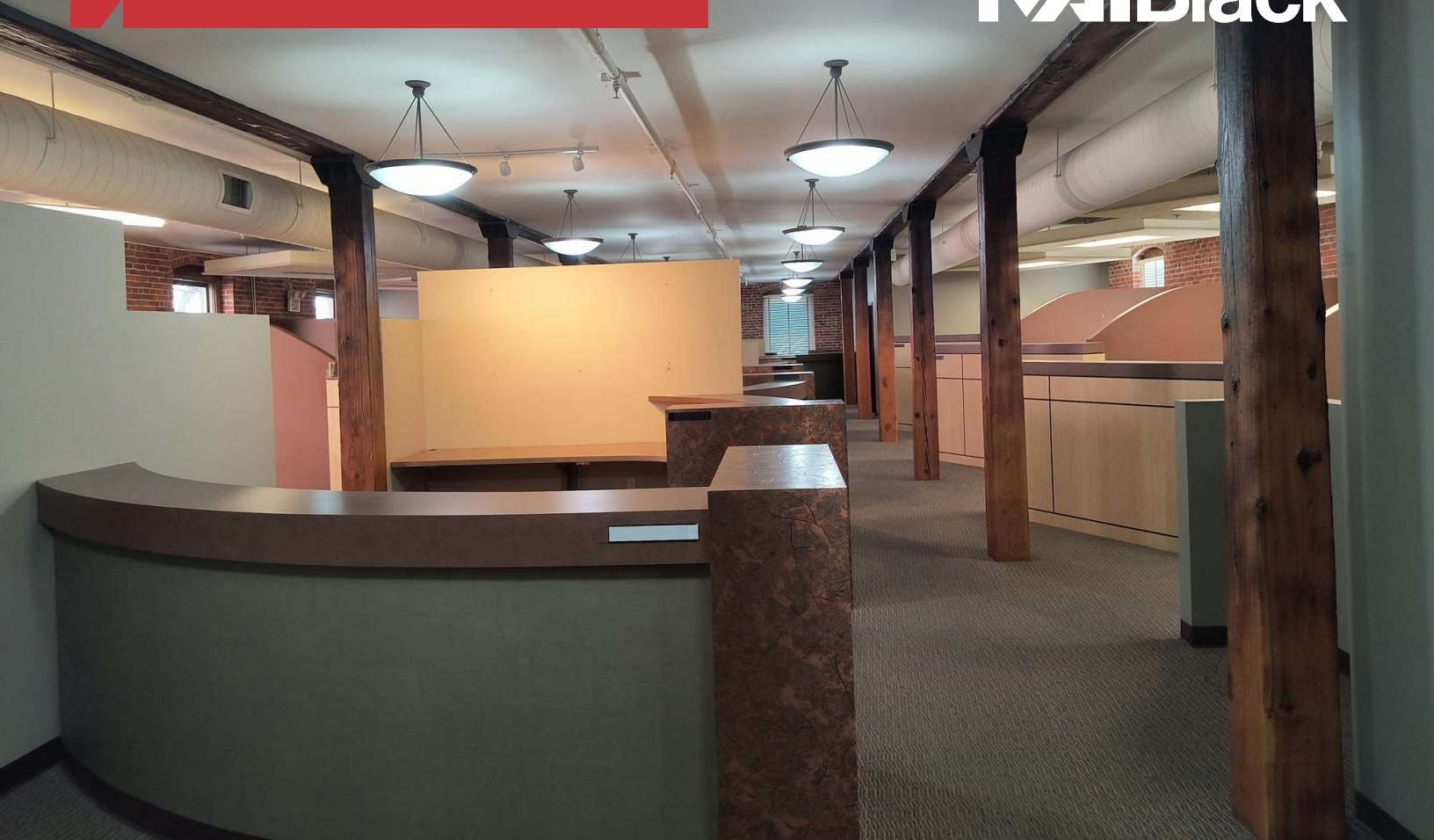
No warranty or representation, expression or implied, is made as to the accuracy of the information contained herein, and the same is submitted subject to errors, omissions, change or price, rental or other conditions, prior to sale, lease, financing, or withdrawal without notice, and of special listing conditions imposed by our principals no warranties or representations are made as to the condition of the property or any hazards contained therein or any to be implied.

801 W. Riverside Avenue, Suite 300
Spokane, WA 99201
509 623 1000 tel
naiblack.com



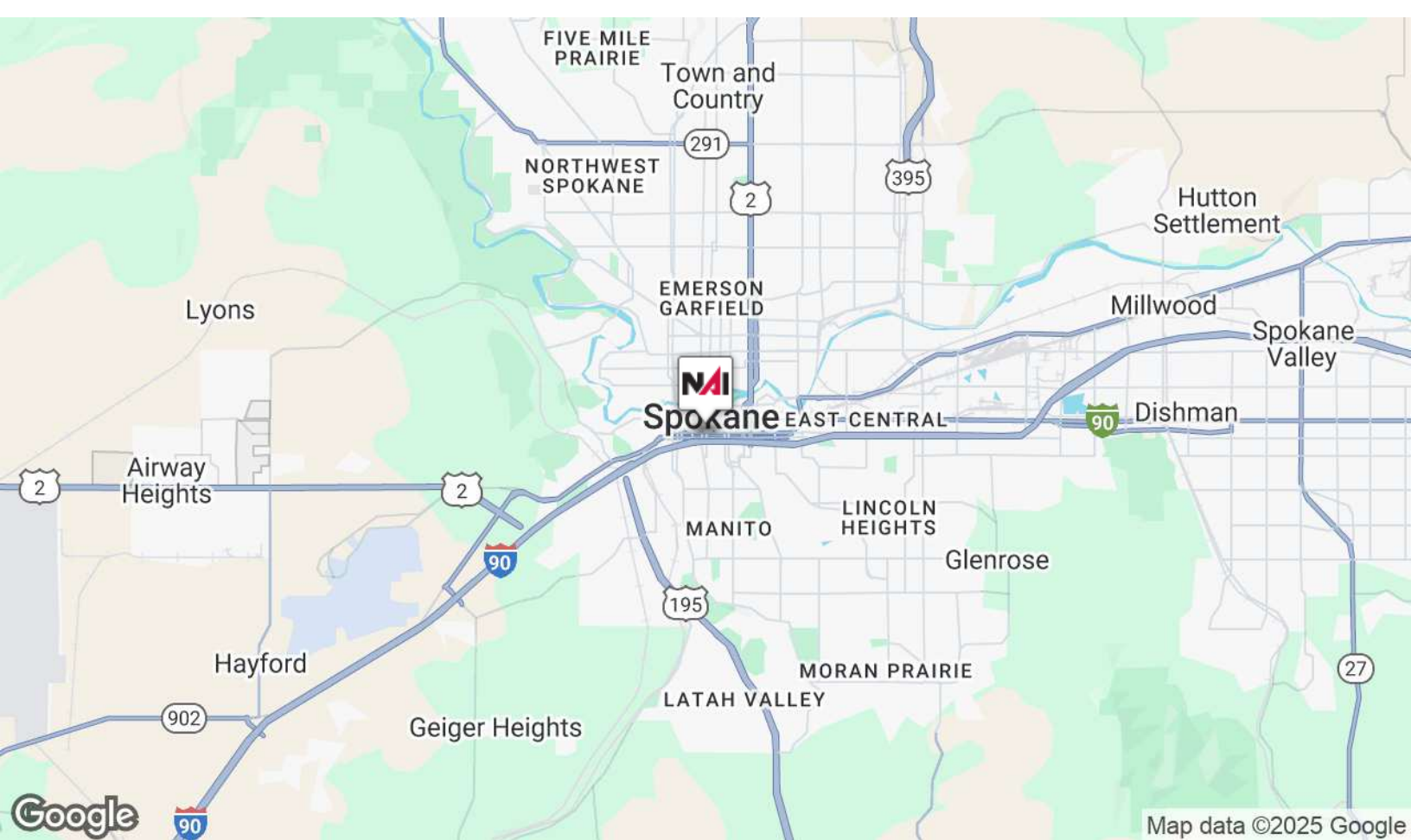






For Sale
Office or Residential Condo

NAI Black



No warranty or representation, expression or implied, is made as to the accuracy of the information contained herein, and the same is submitted subject to errors, omissions, change or price, rental or other conditions, prior to sale, lease, financing, or withdrawal without notice, and of special listing conditions imposed by our principals no warranties or representations are made as to the condition of the property or any hazards contained therein or any to be implied.

801 W. Riverside Avenue, Suite 300
Spokane, WA 99201
509 623 1000 tel
naiblack.com