

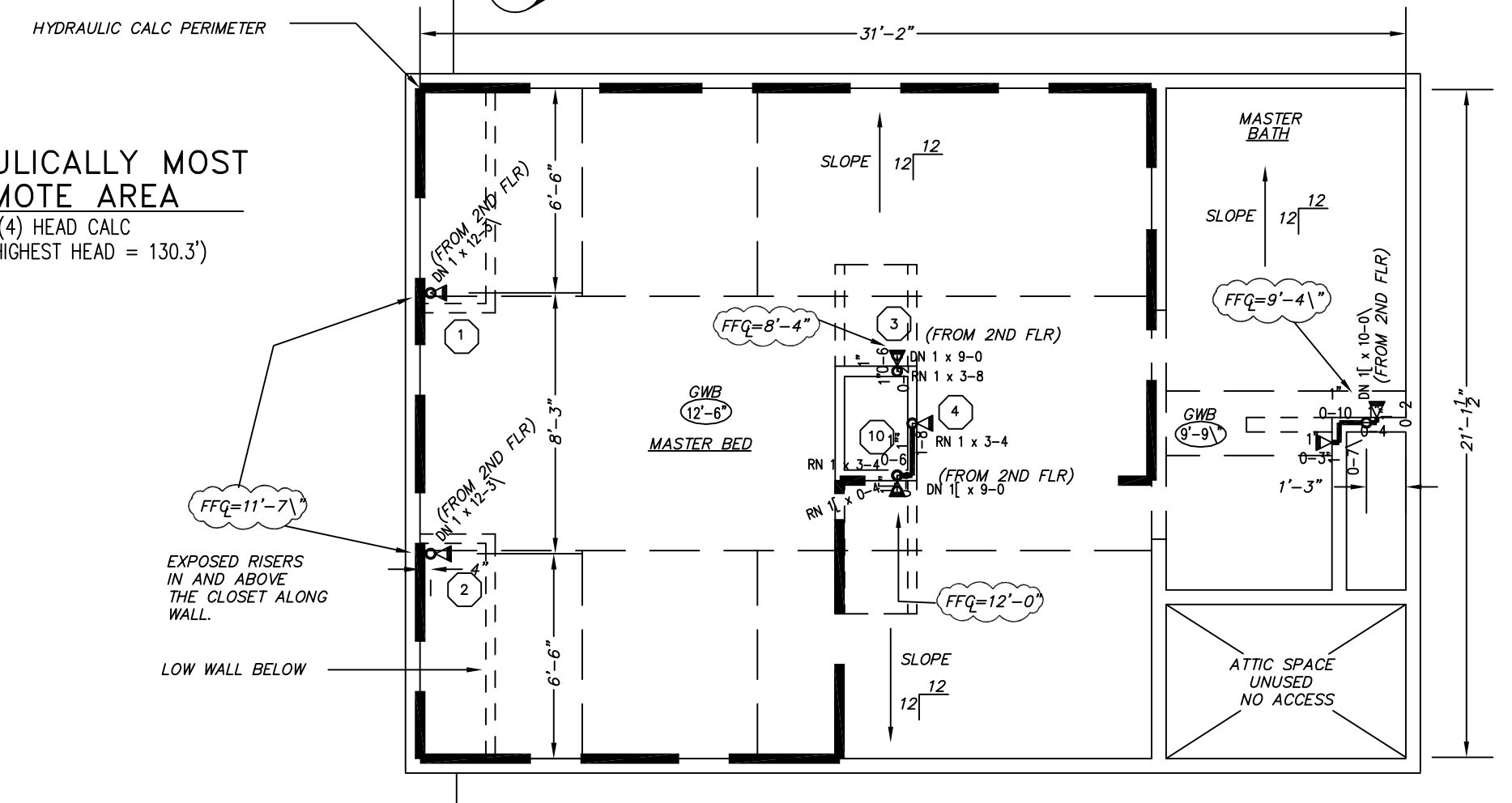
**FIRE SPRINKLER PLAN - FIRST FLOOR**

SCALE: 1/4"=1'  
 AREA PROTECTED: 686 SQ.FT.  
 FINISH FLOOR ELEVATION: 98.47'  
 COLOR CODE: YELLOW

TYCO MODEL "1F" 1/2"  
 155°  
 1/2"-K=4.9  
 WHITE PENDENT  
 SIN# TY 2234

INDICATES EXIST. SPRINK. PIPE= - - - - -  
 INDICATES NEW SPRINK. PIPE= \_\_\_\_\_

**HYDRAULICALLY MOST REMOTE AREA**  
 (4) HEAD CALC  
 (ELEV. @ HIGHEST HEAD = 130.3')



**FIRE SPRINKLER PLAN - THIRD FLOOR**

SCALE: 1/4"=1'  
 AREA PROTECTED: 618 SQ.FT.  
 FINISH FLOOR ELEVATION: 118.3'  
 COLOR CODE: RED

CENTRAL MODEL "1F" II  
 155°  
 1/2"-K=4.2  
 WHITE SIDEWALL  
 SIN# TY 1334

**HYDRAULIC-SYSTEM**  
 THIS BUILDING IS PROTECTED BY A HYDRAULICALLY DESIGNED AUTOMATIC SPRINKLER SYSTEM.  
 LOCATION: 3RD. FLR. BED RM.  
 NFPA # 13R  
 BASIS OF DESIGN:  
 1. GPM PER HEAD 12  
 2. NUMBER OF HEADS 4  
 SYSTEM DEMAND:  
 1. WATER FLOW RATE (GPM) 48.9  
 2. RESIDUAL PRESSURE AT THE BASE OF THE RISER (PSI) 4.9

**HYDRAULIC DATA NAMEPLATE**  
 TO BE MOUNTED AT SYSTEM RISER

○ = HYDRAULIC REFERENCE POINT

**CENTRAL LF II**

IF 8 RESIDENTIAL SIDEWALL SPRINKLER DESIGN REQUIREMENTS

MODEL	COVER. AREA WIDTH LENGTH FT. x FT.	MAXIMUM SPACING FT. (W)	MINIMUM DESIGN FLOW AND RESIDUAL PRESSURE			
			TOP OF RISER TO CEILING: 4 TO 6 INCHES	155°/68°C	175°/79°C	155°/68°C
LF II HORIZONTAL SIDEWALL	12 x 12	12"	120PM(8.2psi)	120PM(8.2psi)	130PM(8.6psi)	130PM(8.6psi)
	14 x 14	14"	140PM(11.5psi)	140PM(11.5psi)	150PM(11.9psi)	150PM(11.9psi)
	16 x 16	16"	160PM(14.5psi)	160PM(14.5psi)	170PM(14.9psi)	170PM(14.9psi)
	18 x 18	18"	180PM(17.5psi)	180PM(17.5psi)	190PM(17.9psi)	190PM(17.9psi)
20 x 20	20"	200PM(20.5psi)	200PM(20.5psi)	210PM(20.9psi)	210PM(20.9psi)	

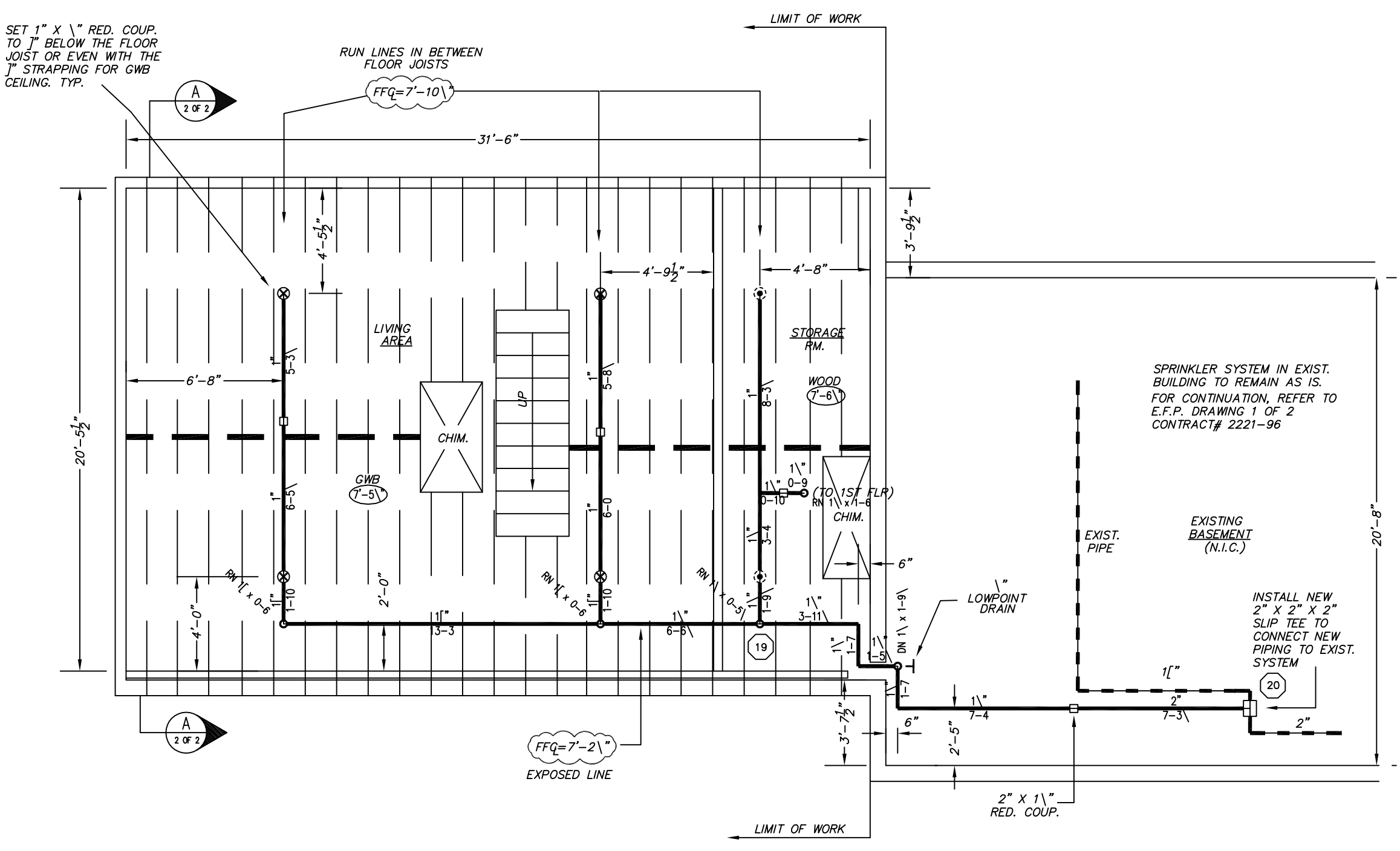
K-FACTOR = 4.2, ° N.P.I.

**CENTRAL LF II**

IF 8 RESIDENTIAL RECESSED PENDENT SPRINKLER DESIGN REQUIREMENTS

MODEL	COVER. AREA MAX. SPACE BETWEEN SPRINKLERS	MAXIMUM LOCATION FROM WALL	MINIMUM DESIGN FLOW (PRESSURE)		MINIMUM FLOW & PRESSURE FOR SLOPED CEILING (MAX. 8° RISE FOR 12" RUN)	
			155°/68°C OR 175°/79°C	155°/68°C	175°/79°C	175°/79°C
LF II RECESSED PENDENT	12 x 12	5'(OR LESS)	130PM(7.0psi)	130PM(7.0psi)	140PM(11.5psi)	140PM(11.5psi)
	14 x 14	7'	150PM(9.0psi)	150PM(9.0psi)	160PM(13.5psi)	160PM(13.5psi)
	16 x 16	8'	170PM(11.0psi)	170PM(11.0psi)	180PM(15.5psi)	180PM(15.5psi)
	18 x 18	9'	190PM(13.0psi)	190PM(13.0psi)	200PM(17.5psi)	200PM(17.5psi)
20 x 20	10'	210PM(15.0psi)	210PM(15.0psi)	N/A	N/A	

K-FACTOR = 4.9, ° N.P.I.

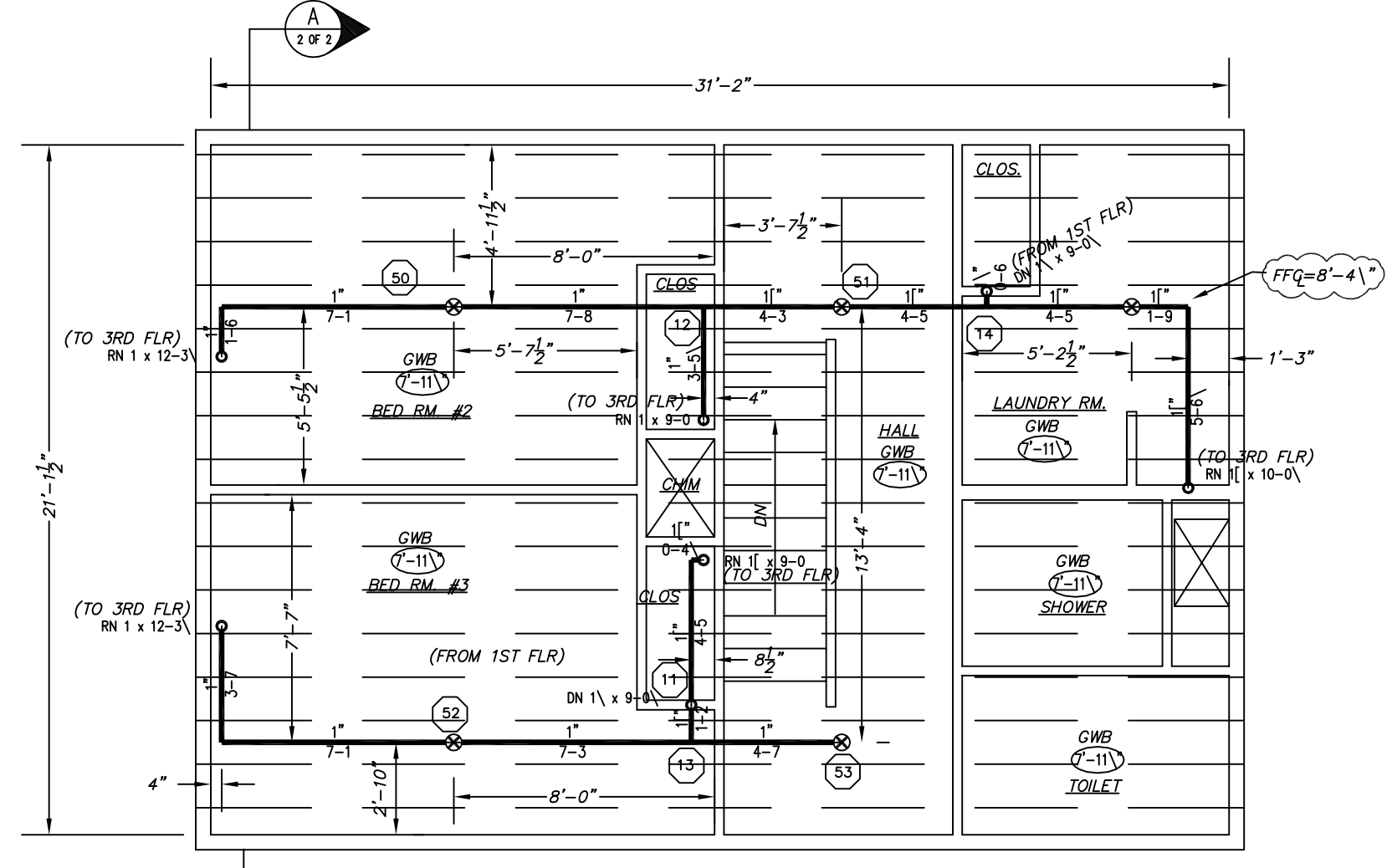


**FIRE SPRINKLER PLAN - BASEMENT ADDITION**

SCALE: 1/4"=1'  
 AREA PROTECTED: 643.0 SQ.FT.  
 FINISH FLOOR ELEVATION: 90.09'  
 COLOR CODE: WHITE

CENTRAL MODEL "1F" I  
 155°  
 1/2"-K=4.9  
 WHITE PENDENT  
 SIN# TY 2234

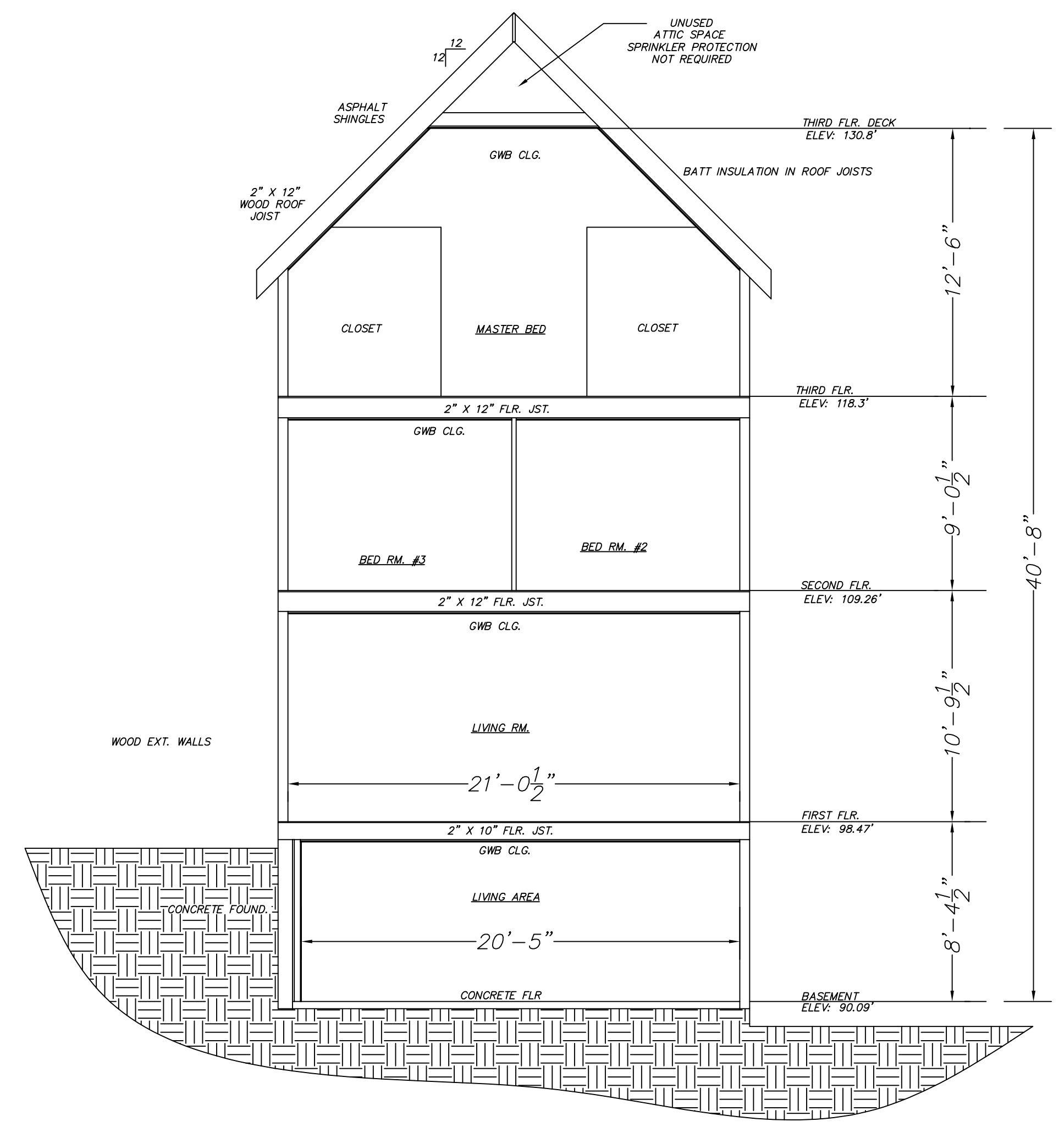
CENTRAL MODEL "1F" B  
 155°  
 1/2"-K=5.6  
 WHITE PENDENT  
 SIN# 3251



**FIRE SPRINKLER PLAN - SECOND FLOOR**

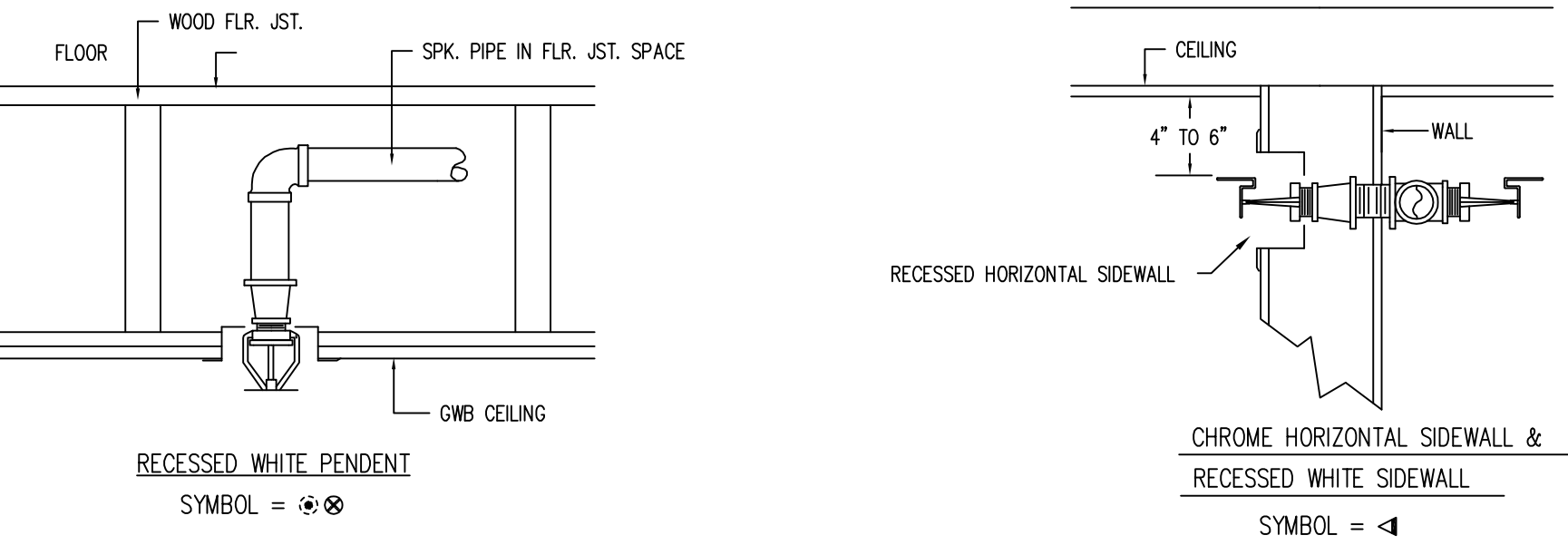
SCALE: 1/4"=1'  
 AREA PROTECTED: 658 SQ.FT.  
 FINISH FLOOR ELEVATION: 109.26'  
 COLOR CODE: BLUE

CENTRAL MODEL "1F" I  
 155°  
 1/2"-K=4.9  
 WHITE PENDENT  
 SIN# TY 2234

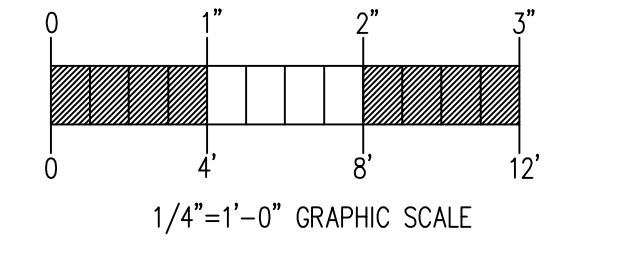


**BUILDING SECTION - AA**  
 SCALE: [1"=1'-0"]

NOTE:  
 REFER TO E.F.P. DRAWING 1 OF 2 CONTRACT# 2221-96 FOR VALVE DETAIL, PLOT PLAN, HANGER DETAIL AND THE SPRINKLER DESIGN OF THE EXISTING BUILDING.



**SPRINKLER HEAD DETAILS**  
 NOT TO SCALE



**GENERAL NFPA #13R NOTES**

- SPRINKLER SYSTEM INSTALLATION TO COMPLY WITH NFPA PAMPHLET # 13R-1999
- PIPING IN BASEMENT TO BE BLACK SCHEDULE #40, JOINED WITH THREADED DUCTILE IRON FITTINGS. (C = 120) FIRST, SECOND & THIRD FLOOR PIPING TO BE CPVC (C = 150)
- OWNER TO PROVIDE SUFFICIENT HEAT THROUGHOUT BUILDING TO PREVENT FREEZING OF WATER FILLED SPRINKLER PIPING AND EQUIPMENT (40°F MIN.).
- ALL WIRING TO BE DONE BY OTHERS
- SPRINKLERS ARE NOT REQUIRED IN THE FOLLOWING AREAS AS PER NFPA 13R-1999:
- BATHROOMS NOT EXCEEDING 55 SQ. FT. WITH NON-COMBUSTIBLE CONSTRUCTION & FIXTURES
  - CLOTHES CLOSETS, LINEN CLOSETS, AND PANTRIES WITHIN THE DWELLING UNITS WHERE THE AREA OF THE SPACE DOES NOT EXCEED 24 SQ. FT. AND WITH THE LEAST DIMENSION NOT EXCEEDING 3 FT., WITH THE WALLS AND CEILINGS SURFACED WITH NON-COMBUSTIBLE OR LIMITED-COMBUSTIBLE MATERIALS AS DEFINED BY NFPA 220.
  - ANY PORCHES, BALCONIES, CORRIDORS, AND STAIRS THAT ARE OPEN AND ATTACHED.
  - ATTICS, PENTHOUSES, EQUIPMENT ROOMS, CRAWL SPACES, FLOOR/CLG SPACES, ELEVATOR SHAFTS, AND ANY OTHER CONCEALED SPACES THAT ARE NOT USED OR INTENDED FOR LIVING PURPOSES OR STORAGE.
  - CLOSETS ON EXTERIOR BALCONIES REGARDLESS OF SIZE AS LONG AS THERE ARE NO DOORS OR UNPROTECTED PENETRATIONS FROM THE CLOSET DIRECTLY INTO THE DWELLING.

REQUIRED APPROVALS OWNER / ARCHITECT STATE FIRE MARSHAL FREEPORT FIRE DEPT.	THE JAMES PLACE INN 11 HOLBROOK STREET FREEPORT, ME. 04032	FIRE SPRINKLER PLANS & DETAILS
DRAWN BY T. PRAY NICET LEVEL III CERT.# 100854	CONTRACT WITH: <b>EASTERN FIRE PROTECTION</b> AUBURN/LEWISTON INDUSTRIAL AIRPARK, AUBURN, MAINE 04210	DWG. NO. 2 OF 2
CHECKED BY WAF NICET LEVEL III CERT.# 095574		JOB NUMBER AN-3318-03
CONTRACTOR LICENSE # 101 CONTRACTOR RMS # 368		SCALE 1/4" = 1'0"
		DATE 6/5/03