



REAL  
ESTATE



## 10910 - 10920 W Sam Houston Parkway N

Houston, TX

Park Size: 91,451 SF | Park Availability: 25,635 SF

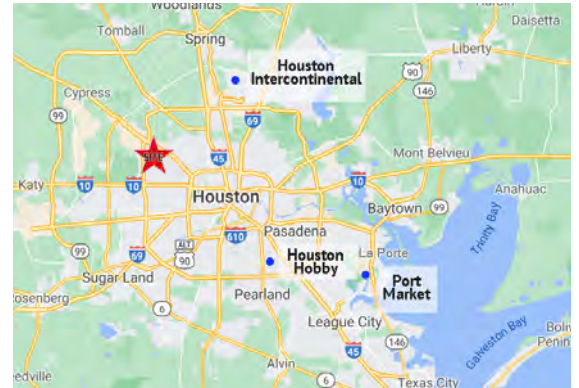
# 10910 - 10920 West Sam Houston Parkway N

Houston, TX

Park Size: 91,451 SF | Park Availability: 25,685 SF

## Building Specifications

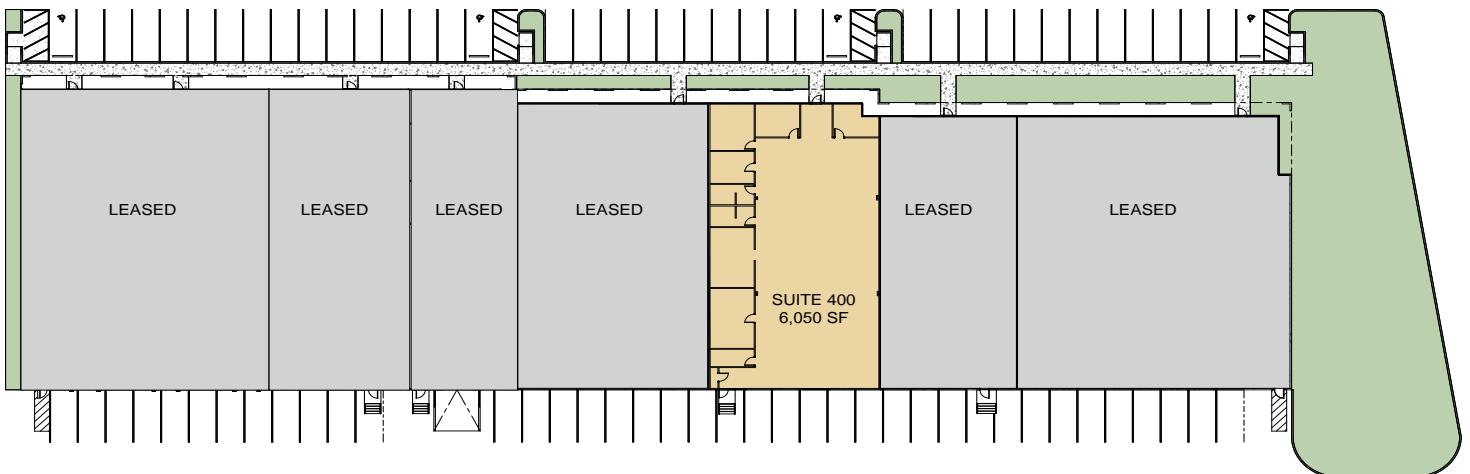
- 91,451 SF Park Size
- 25,685 SF Available
- Outstanding visibility and corporate identity
- Excellent access to Hwy 290, 249, I-45 North via Beltway 8
- Professionally landscaped
- Concrete tilt-wall construction
- Strong institutional ownership



### 10910 West Sam Houston Parkway N



### 10920 West Sam Houston Parkway N



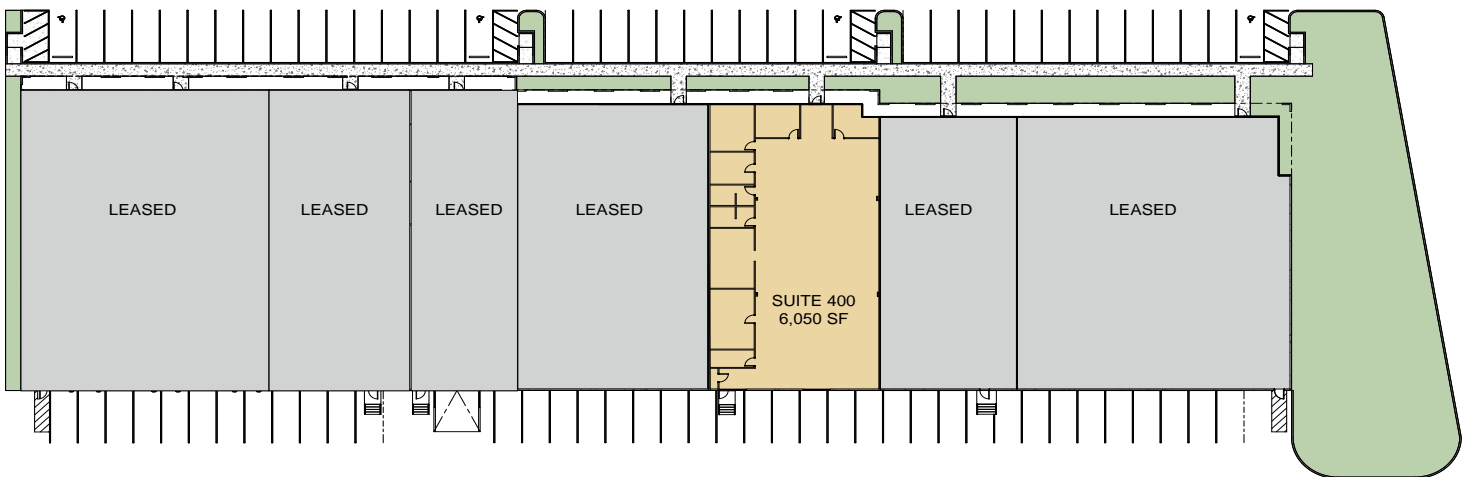
# 10920 West Sam Houston Parkway N Suite - 400

Houston, Texas

Building Size: 45,775 SF | Building Availability: 6,050 SF

## Building Specifications

- 6,050 SF available for lease
- Newly renovated
- 19' Clear height
- Concrete tilt-wall construction
- **Suite 400: 6,050 SF available for lease**
  - 100% Office space



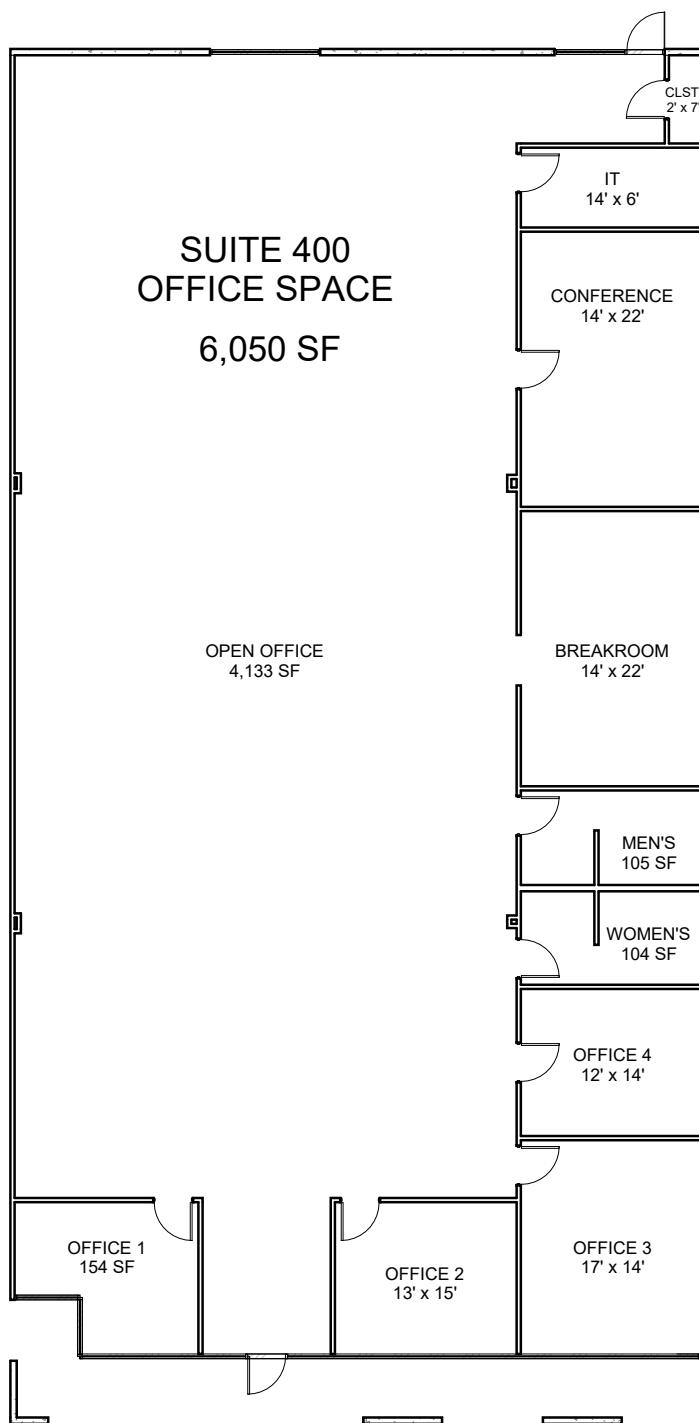
# 10920 West Sam Houston Parkway N Suite - 400

Houston, Texas

Building Size: 45,775 SF | Building Availability: 6,050 SF

## Suite 400

- Suite 400: 6,050 SF available for lease
  - 100% Office space



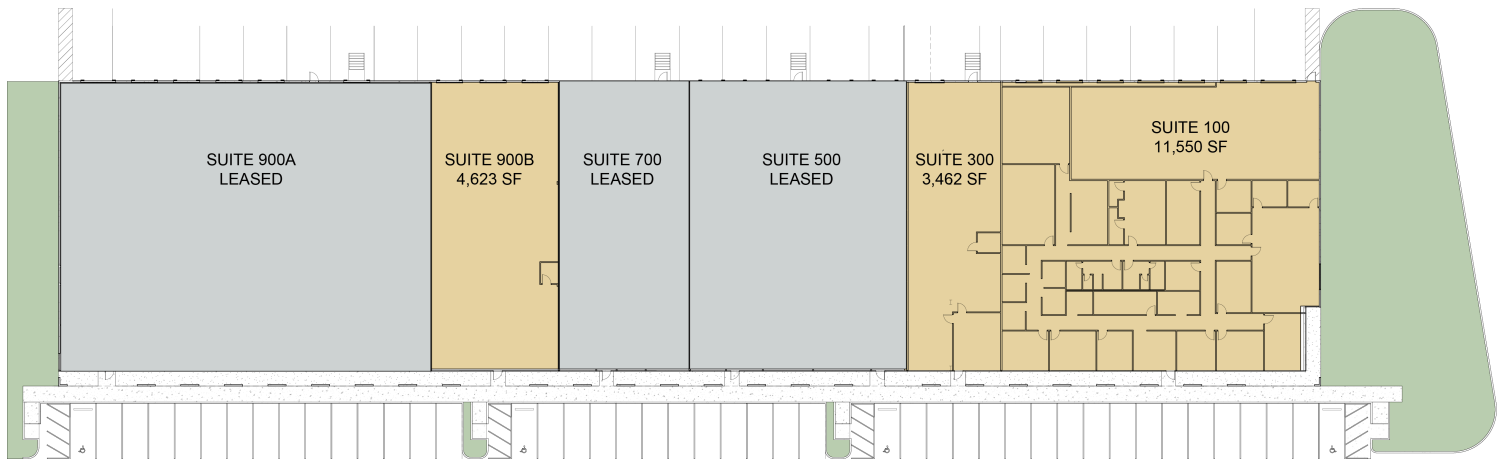
# 10910 West Sam Houston Parkway N

Houston, Texas

**Building Size:** 45,676 SF | **Building Availability:** 19,635 SF

## Building Specifications

- Industrial space available
- 45,676 SF total building size
- 19,635 SF available size
- **Suite 100: 11,550 SF available for lease**
  - Office: 7,861 SF
  - Warehouse: 3,689 SF
  - 4 dock high doors and 1 drive-in door
  - 100% climate controlled
- **Suite 300: 3,462 SF available for lease**
  - Office: Approximately 500 SF
  - Dock Doors: 1
- **Suite 900B: 4,623SF available for lease**
  - 100% warehouse
  - Available April 2024



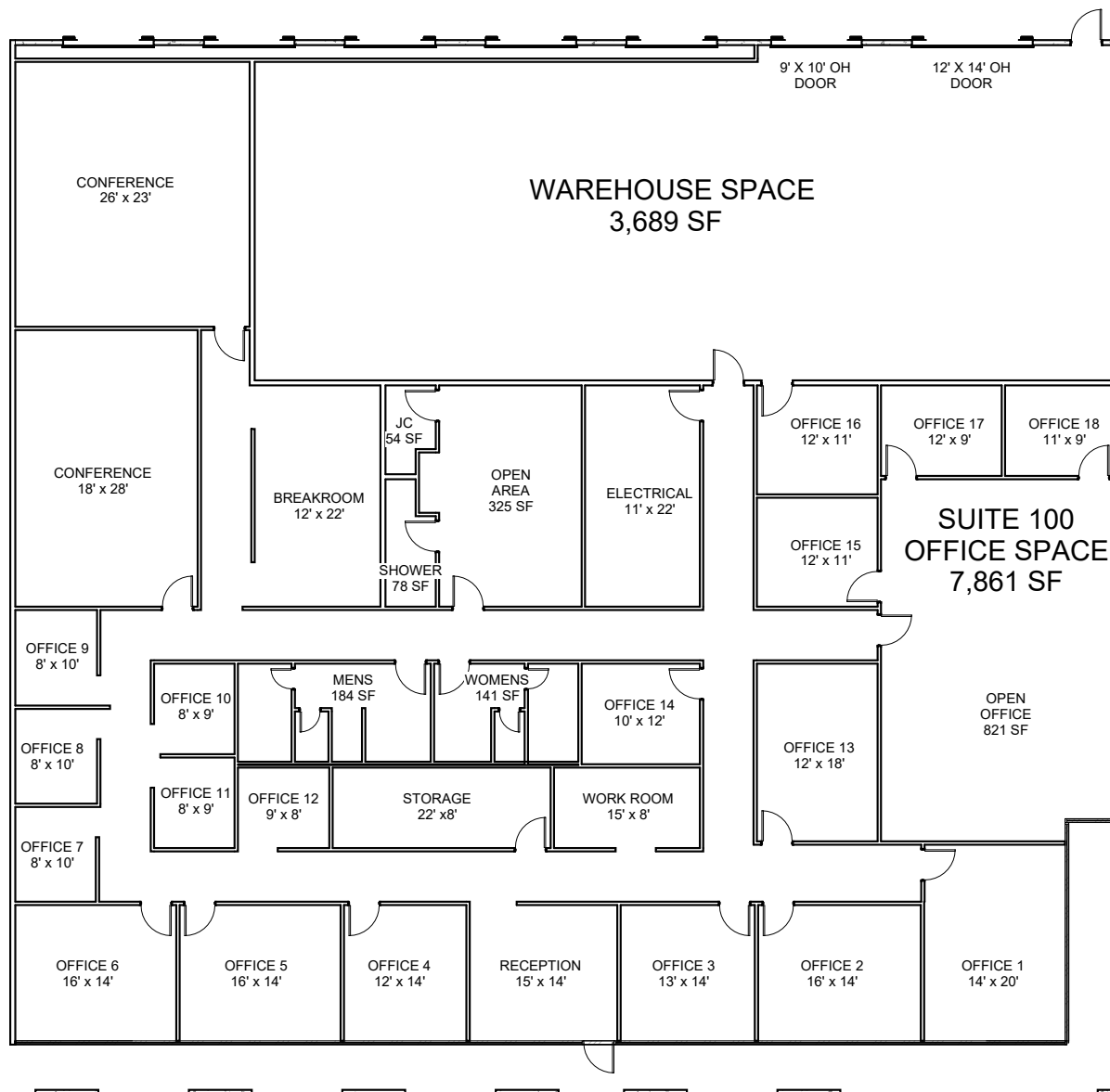
# 10910 West Sam Houston Parkway N - Suite 100

Houston, Texas

Building Size: 45,676 SF | Building Availability: 19,635 SF

## Suite 100

- Suite 100: 11,550 SF available for lease
  - Office: 7,861 SF
  - Warehouse: 3,689 SF
  - 4 dock high doors and 1 drive-in door
  - 100% climate controlled





# 10910 West Sam Houston Parkway N - Suite 900B

Houston, Texas

Building Size: 45,676 SF | Building Availability: 19,635 SF

## Suite 900B

- Suite 900B: 4,623 SF available for lease
  - 100% warehouse
  - Available April, 2024

