

MS VAN BUREN II BUSINESS PARK

9,400 SF FLEX/SHOWROOM WAREHOUSE AVAILABLE



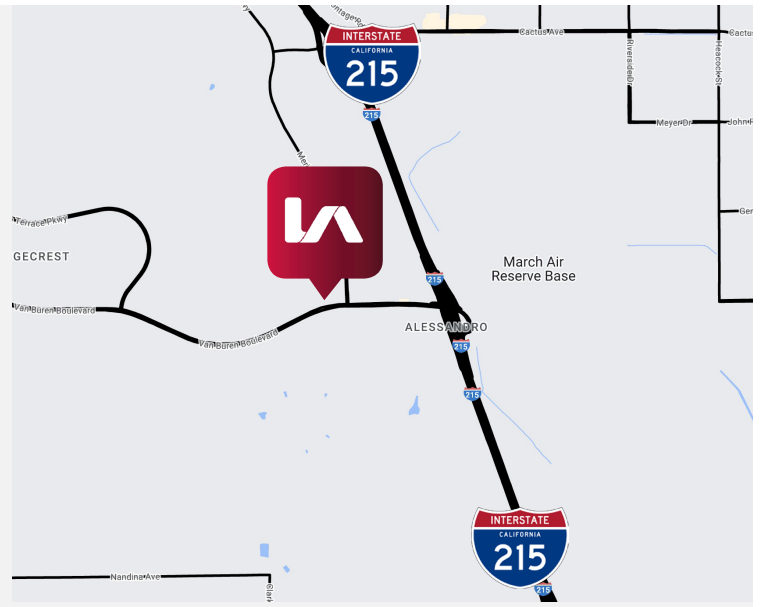
FOR SALE/LEASE



21850 Van Buren Blvd., Riverside, CA

PROPERTY FEATURES

- 9,400 SF Building
- 1,300 SF Office Area
- 34 Parking Stalls (3.6:1,000 SF)
- 12' Clear Height
- 400 Amp Power Service (Verify)
- 1 Glass Ground Level Loading Doors
- Fire Sprinklers
- Mixed-Use Zoning
- Close Proximity to 91, 215, & 60 Freeways



FLEX/SHOWROOM AVAILABLE



Lee & Associates® - Ontario
3535 Inland Empire Blvd, Ontario, CA 91764
909.989.7771 | lee-assoc.com
Corp ID 00976995

JOHN MARTIN
Senior Vice President / Principal
714.307.1250
jmartin@lee-assoc.com
DRE#: 01346629

CHRIS COYTE
Senior Vice President / Principal
909.395.7185
ccoyle@lee-assoc.com
DRE#: 01017328

JUDD HIETBRINK
Associate
949.677.0955
jhietbrink@lee-associates.com
DRE#: 01785515

All information furnished regarding property for sale, rental or financing is from sources deemed reliable, but no warranty or representation is made to the accuracy thereof and same is submitted to errors, omissions, change of price, rental or other conditions prior to sale, lease or financing or withdrawal without notice. No liability of any kind is to be imposed on the broker herein.

MS VAN BUREN II BUSINESS PARK

9,400 SF FLEX/SHOWROOM WAREHOUSE AVAILABLE



SITE

IN-N-OUT
BURGER

CHIPOTLE
MEXICAN GRILL

Jersey Mike's
SUBS

K



Economic Dr
Van Buren Blvd

Meridian Pkwy

Van Buren Blvd



Lee & Associates® - Ontario
3535 Inland Empire Blvd, Ontario, CA 91764
909.989.7771 | lee-assoc.com
Corp ID 00976995

JOHN MARTIN
Senior Vice President / Principal
714.307.1250
jmartin@lee-assoc.com
DRE#: 01346629

CHRIS COYTE
Senior Vice President / Principal
909.395.7185
ccoyle@lee-assoc.com
DRE#: 01017328

JUDD HIETBRINK
Associate
949.677.0955
jhietbrink@lee-associates.com
DRE#: 01785515

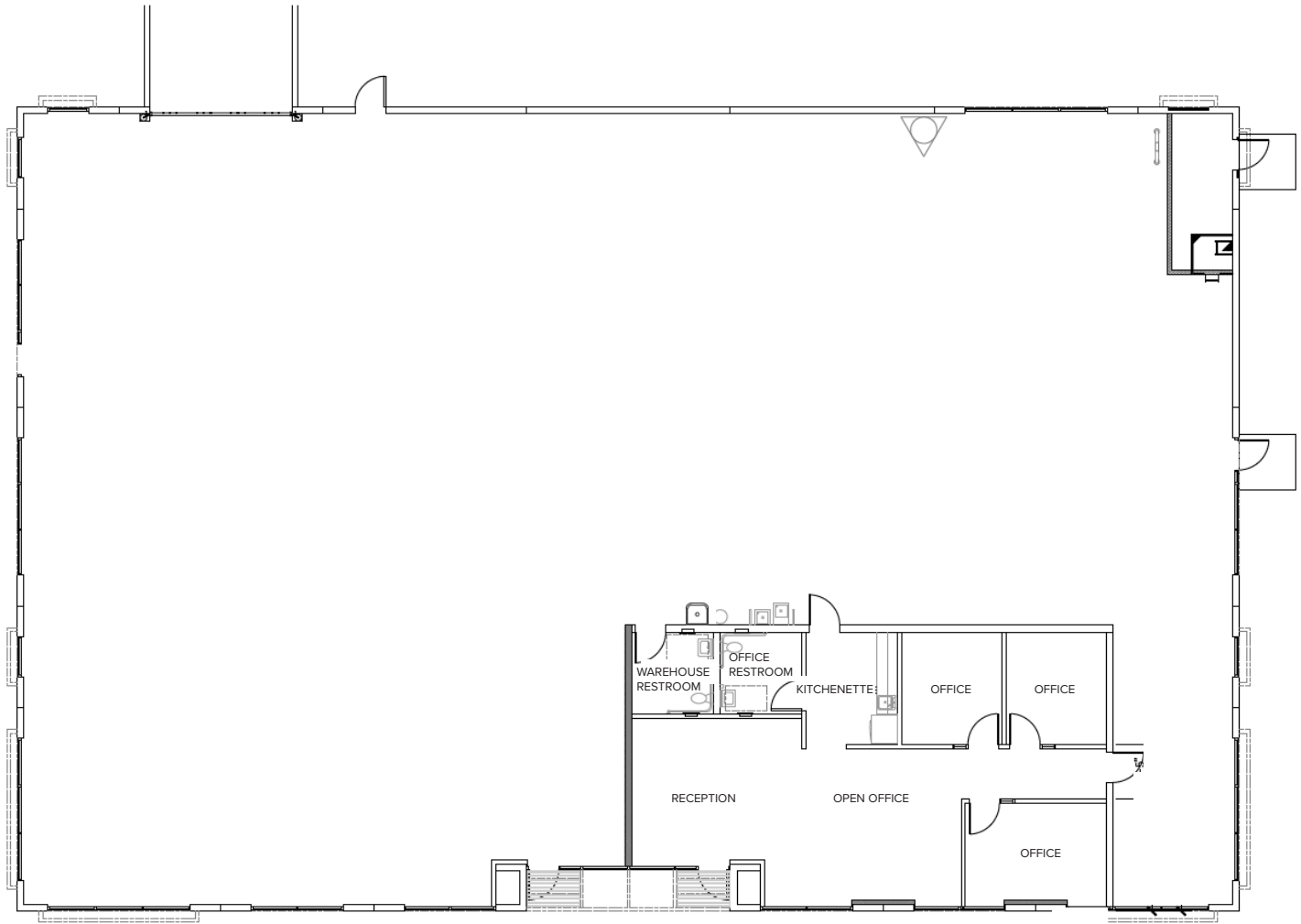
All information furnished regarding property for sale, rental or financing is from sources deemed reliable, but no warranty or representation is made to the accuracy thereof and same is submitted to errors, omissions, change of price, rental or other conditions prior to sale, lease or financing or withdrawal without notice. No liability of any kind is to be imposed on the broker herein.

MS VAN BUREN II BUSINESS PARK

9,400 SF FLEX/SHOWROOM WAREHOUSE AVAILABLE



FLOOR PLAN



JOHN MARTIN

Senior Vice President / Principal
714.307.1250
jmartin@lee-assoc.com
DRE#: 01346629

CHRIS COYTE

Senior Vice President / Principal
909.395.7185
ccoyle@lee-assoc.com
DRE#: 01017328

JUDD HIETBRINK

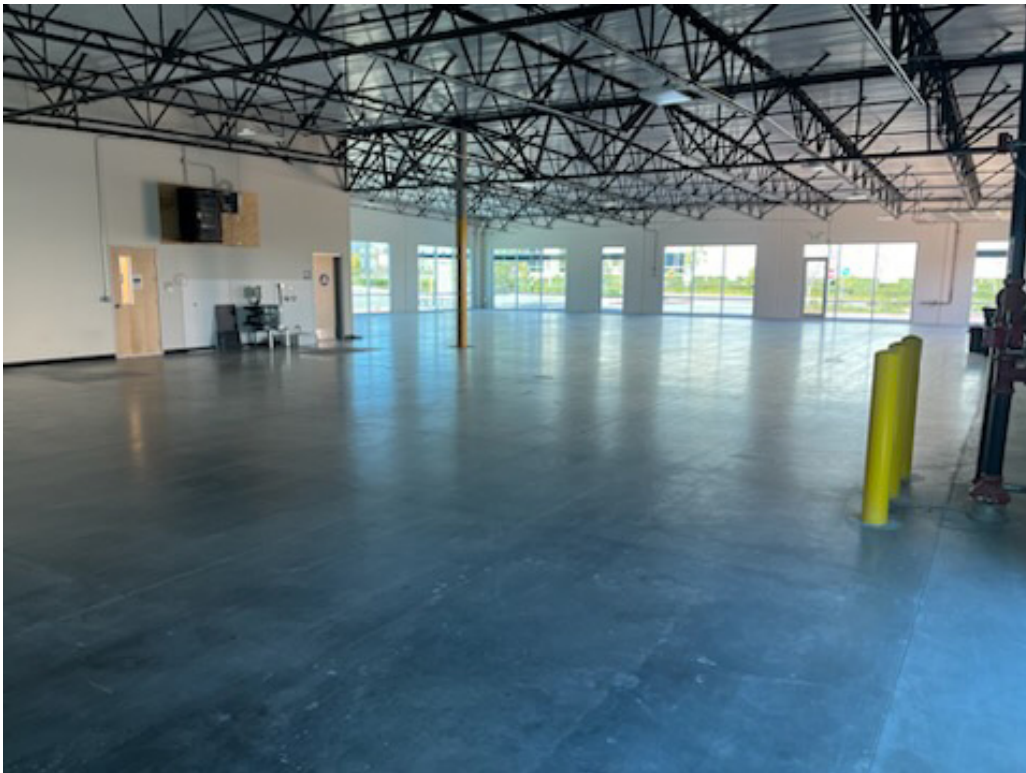
Associate
949.677.0955
jhietbrink@lee-associates.com
DRE#: 01785515

Lee & Associates® - Ontario
3535 Inland Empire Blvd, Ontario, CA 91764
909.989.7771 | lee-assoc.com
Corp ID 00976995

All information furnished regarding property for sale, rental or financing is from sources deemed reliable, but no warranty or representation is made to the accuracy thereof and same is submitted to errors, omissions, change of price, rental or other conditions prior to sale, lease or financing or withdrawal without notice. No liability of any kind is to be imposed on the broker herein.

MS VAN BUREN II BUSINESS PARK

9,400 SF FLEX/SHOWROOM WAREHOUSE AVAILABLE



JOHN MARTIN

Senior Vice President / Principal
714.307.1250
jmartin@lee-assoc.com
DRE#: 01346629

CHRIS COYTE

Senior Vice President / Principal
909.395.7185
ccoyle@lee-assoc.com
DRE#: 01017328

JUDD HIETBRINK

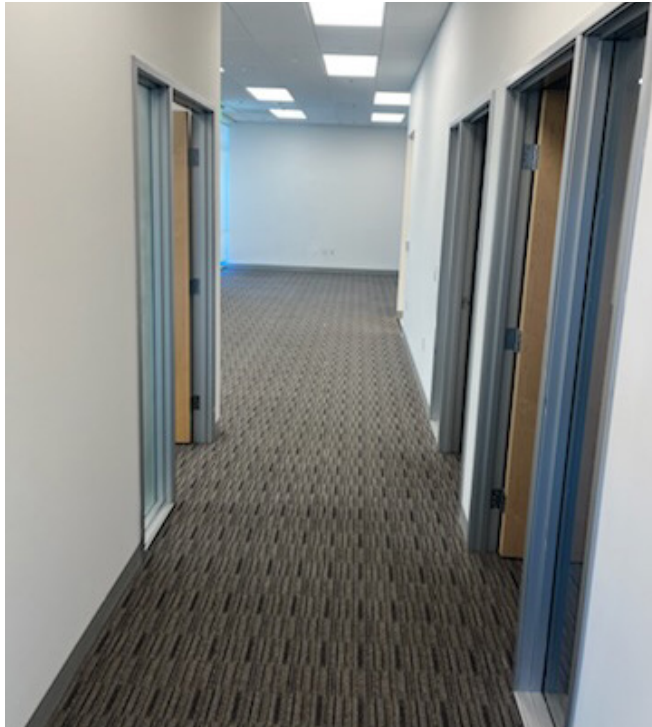
Associate
949.677.0955
jhietbrink@lee-associates.com
DRE#: 01785515

Lee & Associates® - Ontario
3535 Inland Empire Blvd, Ontario, CA 91764
909.989.7771 | lee-assoc.com
Corp ID 00976995

All information furnished regarding property for sale, rental or financing is from sources deemed reliable, but no warranty or representation is made to the accuracy thereof and same is submitted to errors, omissions, change of price, rental or other conditions prior to sale, lease or financing or withdrawal without notice. No liability of any kind is to be imposed on the broker herein.

MS VAN BUREN II BUSINESS PARK

9,400 SF FLEX/SHOWROOM WAREHOUSE AVAILABLE



JOHN MARTIN

Senior Vice President / Principal
714.307.1250
jmartin@lee-assoc.com
DRE#: 01346629

CHRIS COYTE

Senior Vice President / Principal
909.395.7185
ccoyle@lee-assoc.com
DRE#: 01017328

JUDD HIETBRINK

Associate
949.677.0955
jhietbrink@lee-associates.com
DRE#: 01785515

Lee & Associates® - Ontario
3535 Inland Empire Blvd, Ontario, CA 91764
909.989.7771 | lee-assoc.com
Corp ID 00976995

All information furnished regarding property for sale, rental or financing is from sources deemed reliable, but no warranty or representation is made to the accuracy thereof and same is submitted to errors, omissions, change of price, rental or other conditions prior to sale, lease or financing or withdrawal without notice. No liability of any kind is to be imposed on the broker herein.