

992 Witham Drive  
Muskegon, Michigan

**CORE**  
COMMERCIAL

PRICE REDUCED



## Office | For Sale or Lease

- Building Total: 1,223 Square Feet
- Zoned R-4/C-2
- Year Built: 2013
- 8' Ceiling Height

Stand-alone office building for sale or lease in North Muskegon. Located at the intersection of Dykstra and Witham with convenient access to Whitehall Road. The subject building is comprised of a mix of private offices, conference room, kitchenette and reception area. Currently a financial planning company occupies the space. Recent improvements include a new paved drive and parking area. Ideal for a small insurance agency, financial planner, or other professional office user. Office furnishings (furniture) could be available to buyer/tenant.

**Lease Price: \$15.00/SF/Yr NNN (\$1,528.75/Month)**

**Sale Price: ~~\$199,000~~ \$189,000**

For more information, please contact:

BRYAN BENCH  
231 578 2508  
bryanbench@corerealty.com

Connect with us:



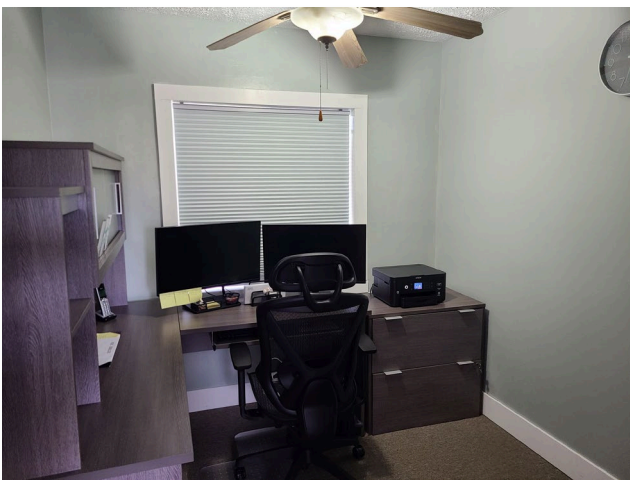
**CORE REALTY PARTNERS**

221 W. Webster Avenue  
Muskegon, MI 49440

www.corecommercialrealty.com

Information is subject to verification and no liability for errors or omissions is assumed. Price is subject to change and listing withdrawal.

Photos



For more information, please contact:

BRYAN BENCH  
231 578 2508  
bryanbench@corerealty.com

Connect with us:



CORE REALTY PARTNERS

221 W. Webster Avenue  
Muskegon, MI 49440

www.corecommercialrealty.com

992 Witham Drive  
Muskegon, Michigan

For Lease

Aerial



For more information, please contact:

BRYAN BENCH  
231 578 2508  
bryanbench@corealty.com

Connect with us:



CORE REALTY PARTNERS

221 W. Webster Avenue  
Muskegon, MI 49440

[www.corecommercialrealty.com](http://www.corecommercialrealty.com)

Information is subject to verification and no liability for errors or omissions is assumed. Price is subject to change and listing withdrawal.