

FOR SALE & LEASE

±12.24 Acres of Land

12705 Temescal Canyon Road | Corona, CA 92879



IAN OZIMEC, CCIM

Senior Associate
Lic # 02040261
P 909.545.8001
iozimec@voitco.com

Voit
REAL ESTATE SERVICES

GREGORY OZIMEC

President
Lic # 01821038
P 949.584.7873
greg@industrialbrokers.net

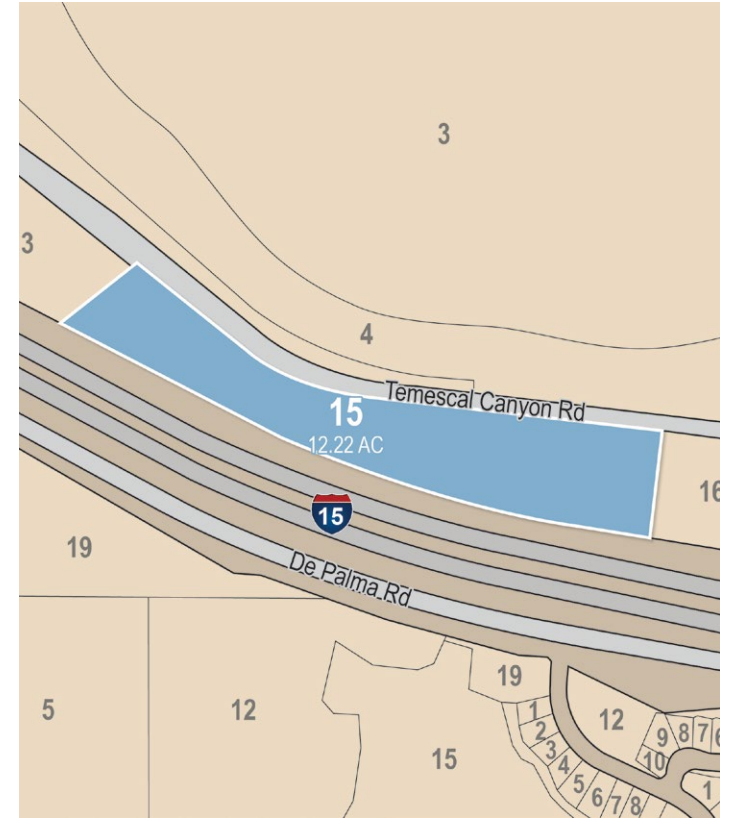


FOR SALE & LEASE



Parcel Detail

	Address	Acres	APN
1	12705 Temescal Canyon Road Corona, CA 92879	±12.24 AC	393-070-015

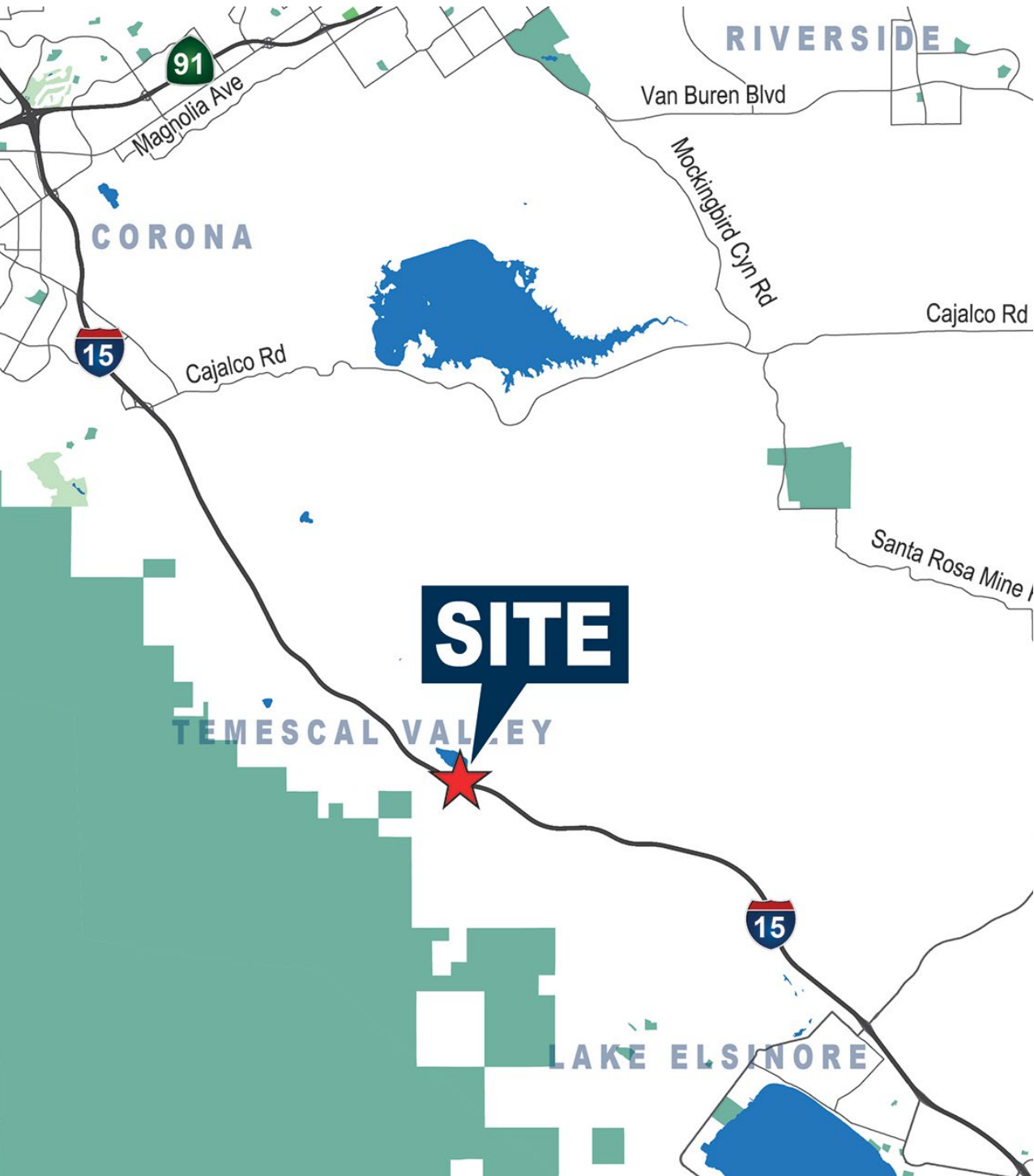


Property Features

	±4.50 Acres Usable (Expandable to ±12.24 Acres Usable)		±2,081 ft. of I-15 Freeway Frontage
	Utilities at Temescal Canyon Rd (Verify)		±0.7 Miles to the I-15 Indian Truck Trail On/Off Ramps
	Zoning: County of Riverside - Mixed Use		Corporate Neighbors: Reel Lumber, Porter Rents, & Acker-Stone

Property Aerial





IAN OZIMEC, CCIM

Senior Associate

Lic # 02040261

P 909.545.8001

iozimec@voitco.com

Voit

REAL ESTATE SERVICES

GREGORY OZIMEC

President

Lic # 01821038

P 949.646.2727

greg@industrialbrokers.net

B INDUSTRIAL
BROKERS, INC.

3280 E. Guasti Road, Suite 100

Ontario, CA 91761

909.545.800 • 909.354.3253 Fax

www.VoitCo.com

The information contained herein has been obtained from sources we deem reliable. While we have no reason to doubt its accuracy, we do not guarantee it. Licensed as Real Estate Salespersons by the DRE. ©2024 Voit Real Estate Services, Inc. All Rights Reserved. Lic. #01991785