



For Sale

Sale Price

\$11,500,000

Contact us:

Tom Haverty

Executive Vice President
+1 816 556 1105
tom.haverty@colliers.com

Ed Elder

President
+1 816 556 1135
ed.elder@colliers.com

Colliers Kansas City

4520 Main Street, Suite 1000
Kansas City, Missouri
colliers.com/kansascity

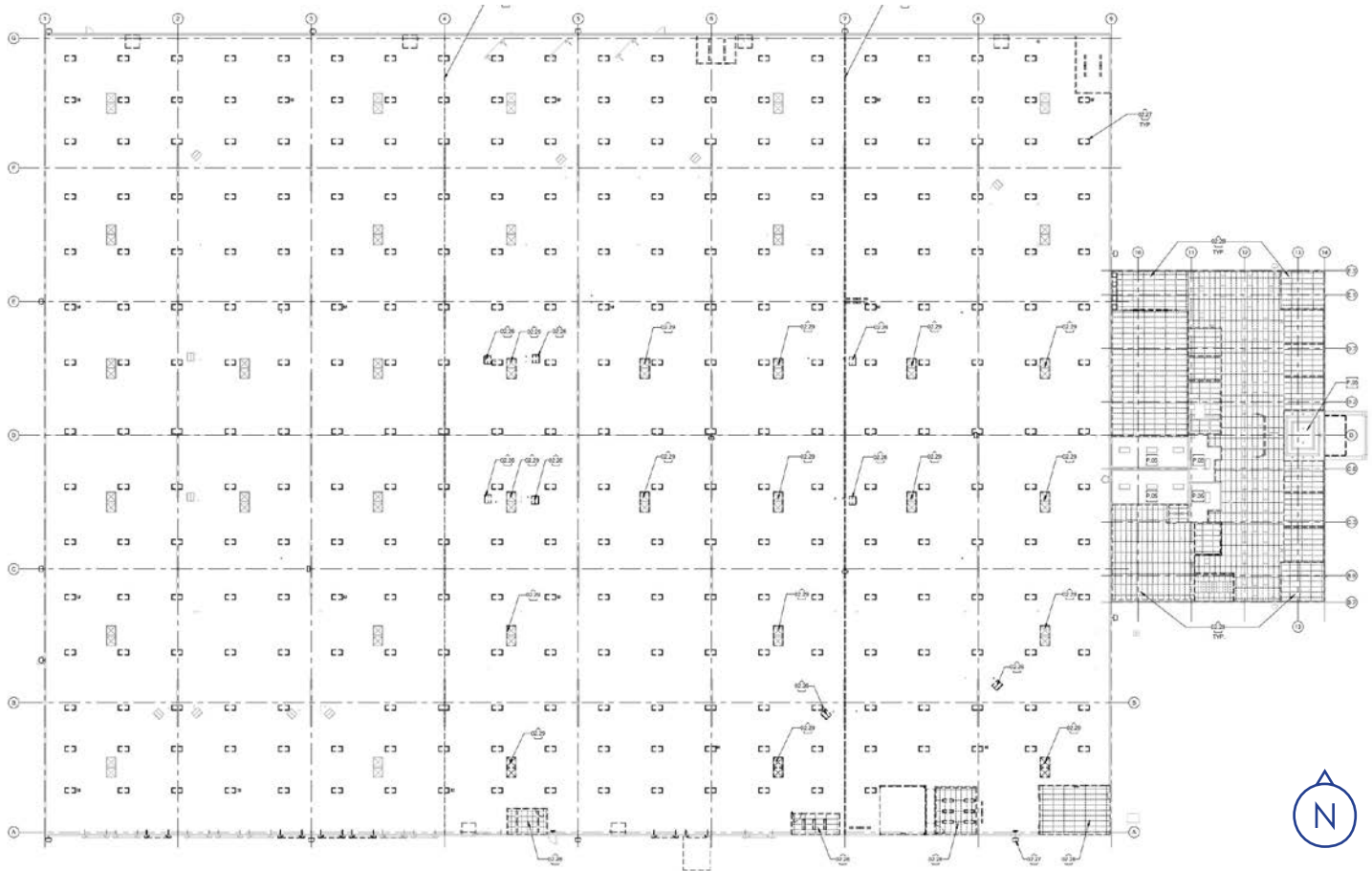
7910 Hedge Lane Terrace

Shawnee, Kansas

Property Features

- Building Size: 129,700± SF
 - Office: 10,000± SF
- Land Area: 11.54± acres
- Year Built: 1997
- Construction Type: Precast concrete
- Zoning: P1
- Loading: 16 dock-high doors; one (1) drive-in
- Fenced Trailer Parking/Loading Area
- Clear Height: 28'
- Electrical: 2000 amp; 480/277 volt; 3-phase
- Sprinkler: Wet
- Sale Price: \$11,500,000
- Utilities:
 - Electricity: Evergy
 - Gas: Kansas Gas
 - Sanitary Sewer: Johnson County Waste Water
 - Water: WaterOne

Floor Plan



Aerial



7910 Hedge Lane Terrace
Shawnee, Kansas

Tom Haverty

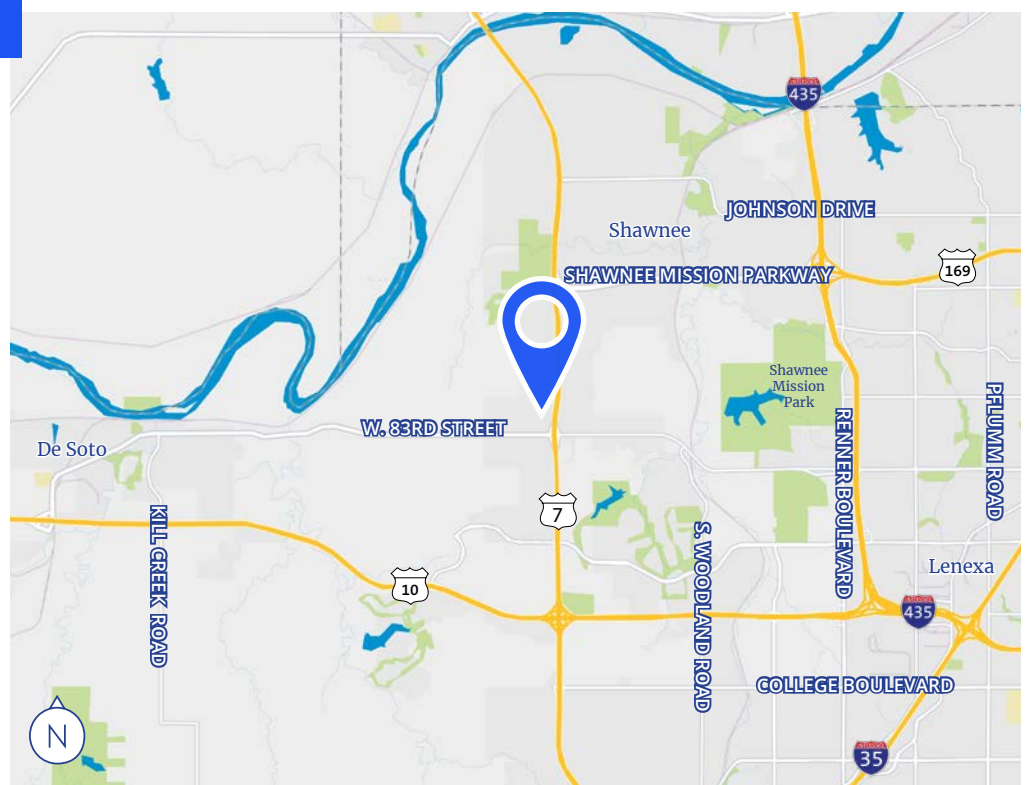
Executive Vice President
+1 816 556 1105
tom.haverty@colliers.com

Ed Elder

President
+1 816 556 1135
ed.elder@colliers.com

Colliers Kansas City

4520 Main Street, Suite 1000
Kansas City, MO 64111
+1 816 531 5303
colliers.com/kansascity



This document has been prepared by Colliers for advertising and general information only. Colliers makes no guarantees, representations or warranties of any kind, expressed or implied, regarding the information including, but not limited to, warranties of content, accuracy and reliability. Any interested party should undertake their own inquiries as to the accuracy of the information. Colliers excludes unequivocally all inferred or implied terms, conditions and warranties arising out of this document and excludes all liability for loss and damages arising there from. This publication is the copyrighted property of Colliers and /or its licensor(s). ©2025. All rights reserved. This communication is not intended to cause or induce breach of an existing listing agreement.