

+/- 16,300 SF AVAILABLE FOR SUBLEASE

**7900 McCloud Rd.**

Greensboro, NC 27409





# 7900 McCloud Rd

Greensboro, NC 27409

## PROPERTY HIGHLIGHTS

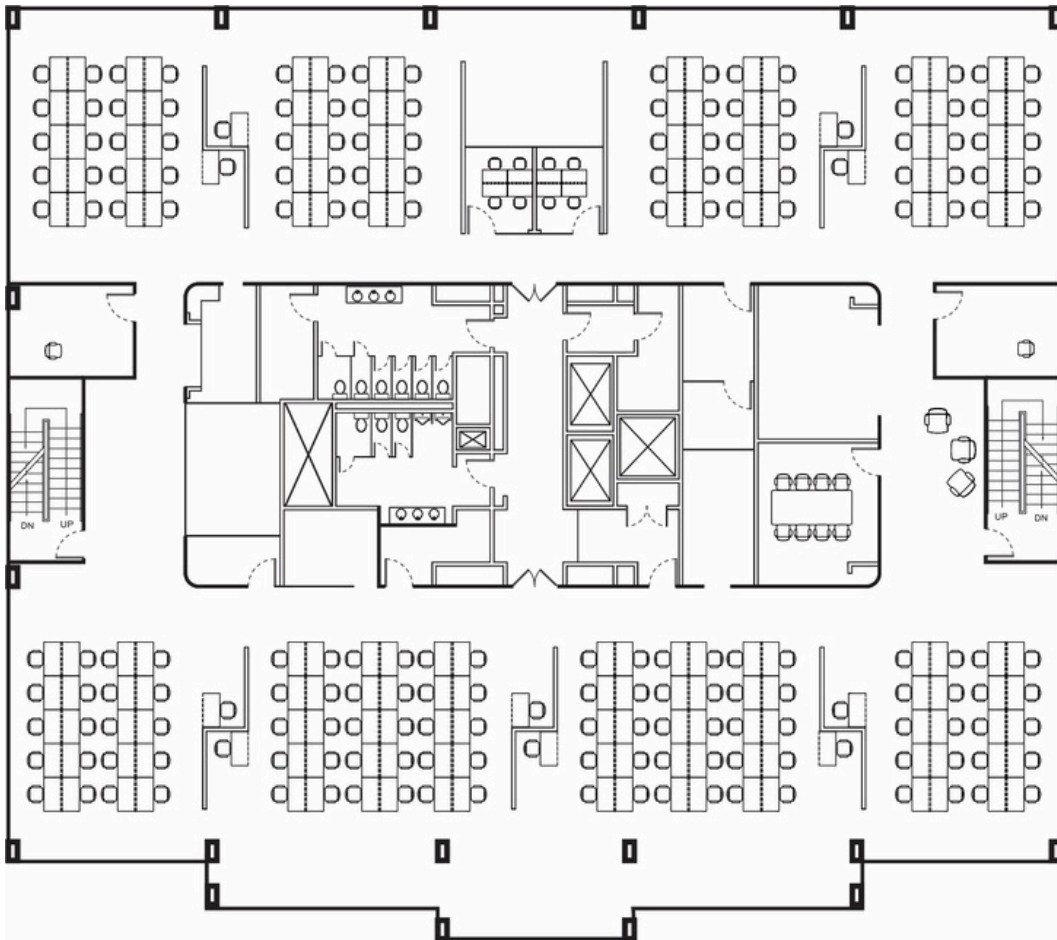
- +/-16,300 SF for sublease
- Fully furnished, plug and play space
- updated modern finishes with entertaining downtime areas
- Full floor (3rd floor) with controlled access
- On-site amenities include; food services with large break area, gym, and outdoor break area
- Prominent visibility from interstate 40
- 114,000 Vehicle count per day
- Close proximity to area restaurants and retail
- Term expires 2/28/29



# 7900 McCloud Rd

Greensboro, NC 27409

## FLOOR PLAN







**FOR MORE INFORMATION, CONTACT:**

**RYAN GIOFFRE**

Senior Director  
+1 336 601 3488

[ryan.gioffre@cushwake.com](mailto:ryan.gioffre@cushwake.com)

**SETH CONSTABLE**

Senior Associate  
+1 336 885 7815

[Seth.Constable@cushwake.com](mailto:Seth.Constable@cushwake.com)



**CUSHMAN &  
WAKEFIELD**

628 Green Valley Rd #202,  
Greensboro, NC 27408  
main +1 336 668 9999  
[cushmanwakefield.com](http://cushmanwakefield.com)

©2025 Cushman & Wakefield. All rights reserved. The information contained in this communication is strictly confidential. This information has been obtained from sources believed to be reliable but has not been verified. NO WARRANTY OR REPRESENTATION, EXPRESS OR IMPLIED, IS MADE AS TO THE CONDITION OF THE PROPERTY (OR PROPERTIES) REFERENCED HEREIN OR AS TO THE ACCURACY OR COMPLETENESS OF THE INFORMATION CONTAINED HEREIN, AND SAME IS SUBMITTED SUBJECT TO ERRORS, OMISSIONS, CHANGE OF PRICE, RENTAL OR OTHER CONDITIONS, WITHDRAWAL WITHOUT NOTICE, AND TO ANY SPECIAL LISTING CONDITIONS IMPOSED BY THE PROPERTY OWNER(S). ANY PROJECTIONS, OPINIONS OR ESTIMATES ARE SUBJECT TO UNCERTAINTY AND DO NOT SIGNIFY CURRENT OR FUTURE PROPERTY PERFORMANCE.