

1304 N.W. 23rd Street
Oklahoma City, OK
73106

Retail Building For Sale or Lease

3,768 RSF on 0.17 Acres MOL

Sales Price: \$695,000

Lease Price: \$10.00/SF NNN

NNN Charges: \$4.18/SF



HAVE QUESTIONS?

405.840.0600

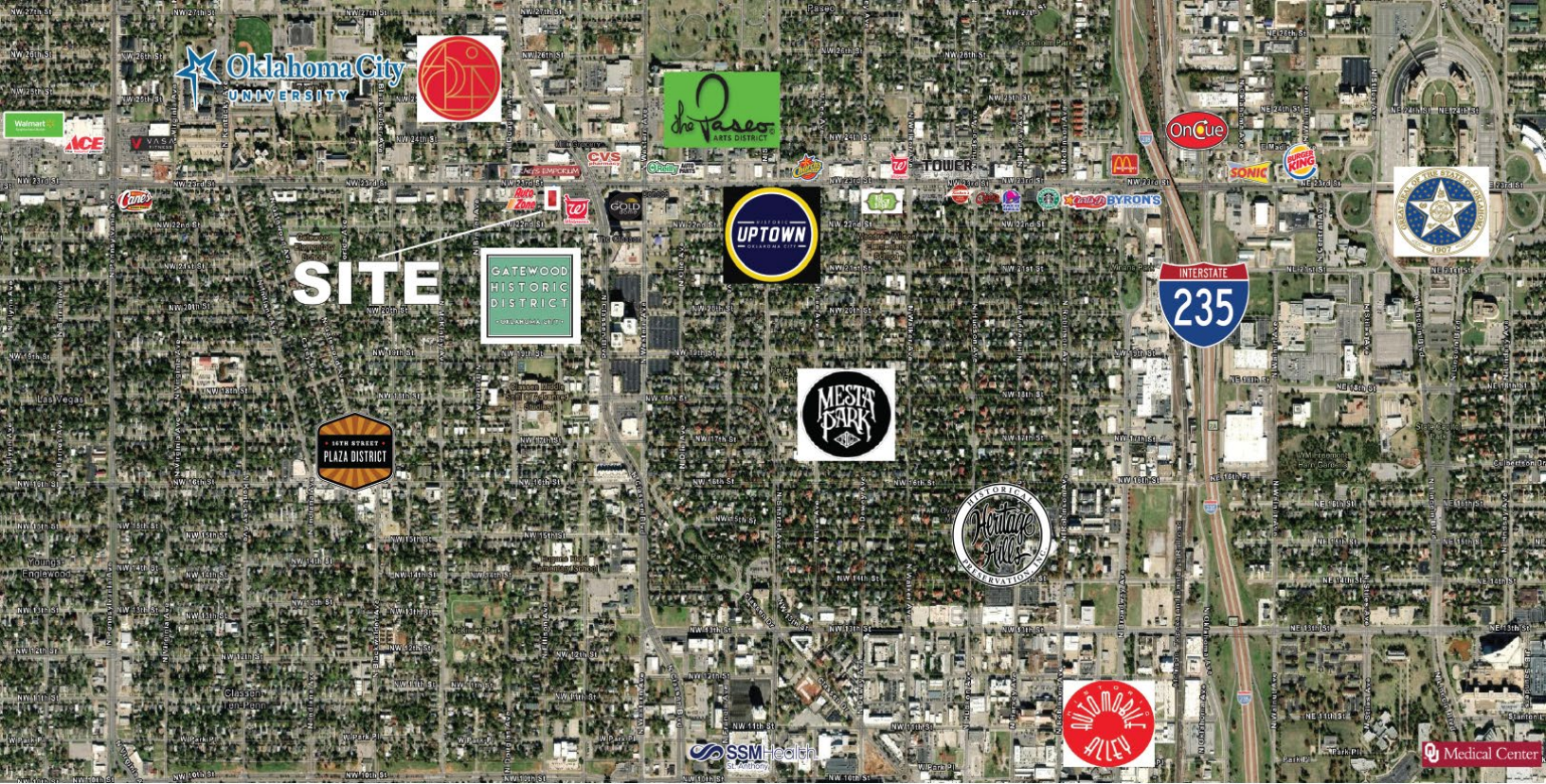
NAISULLIVANGROUP.COM

NAI Sullivan Group

Amanda Sullivan

405.323.6423

AMANDA@NAISULLIVANGROUP.COM



- Free Standing Retail Building
- Open Floor Plan
- 2 Offices and a Storage Area
- 1 ADA Restroom
- New Roof & Gutters in 2024
- Zoned: C-3, Community Commercial District
- Located near NW 23rd and Classen Blvd
- Central Location Close to Midtown, Downtown and the Asian, Paseo, Plaza & Uptown 23rd Districts
- Easy Access to I-235, I-44 & I-40
- Close to the State Capitol and Oklahoma City University

	1 MILE	3 MILE	5 MILE
POPULATION	18,484	90,120	216,970
AVERAGE HOUSEHOLD INCOME	\$89,716	\$74,905	\$68,508
TOTAL HOUSEHOLDS	7,996	39,463	89,332

HAVE QUESTIONS?

405.840.0600

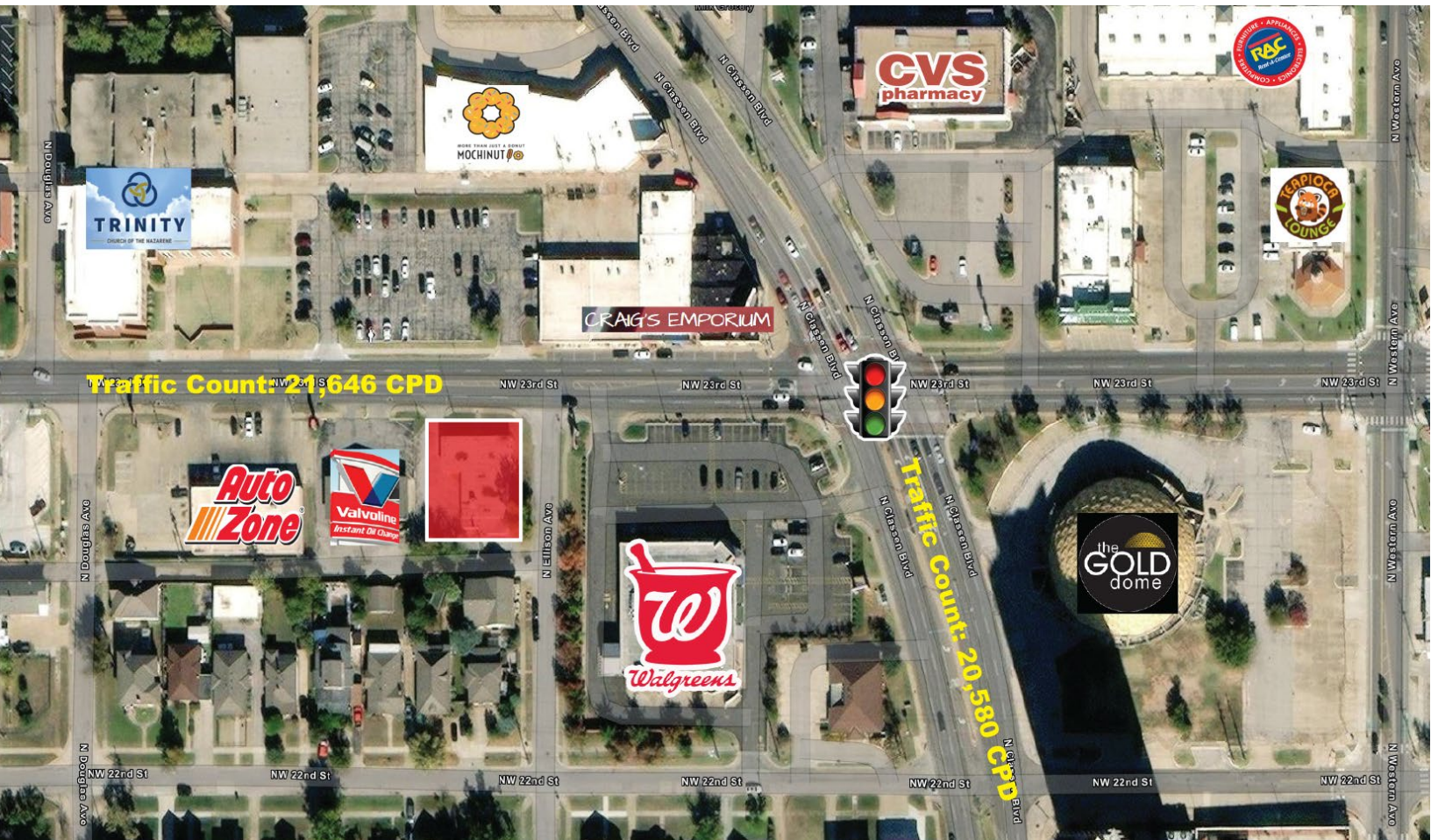
NAISULLIVANGROUP.COM

NAI Sullivan Group

Amanda Sullivan

405.323.6423

AMANDA@NAISULLIVANGROUP.COM



No warranty or representation, express or implied, is made as to the accuracy of the information contained herein, and the same is submitted subject to errors, omissions, change of price, rental or other conditions, prior to sale, lease, or financing, or withdrawal without notice, and of any special listing conditions imposed by our principals no warranties or representations are made as to the condition of the property or any hazards contained therein are any to be implied.

NAI Sullivan Group

405.840.0600

NAISULLIVANGROUP.COM

FOLLOW US   