



811 LaSalle

For Lease Downtown
Restaurant & Retail

811 LaSalle Ave, Minneapolis, MN 55402



Property Info:

- Space Available: Up to 2,626 SF
- Net Lease Rate: Negotiable
- CAM/TAX: \$16.39 per sf (2024)
- Connected parking ramp

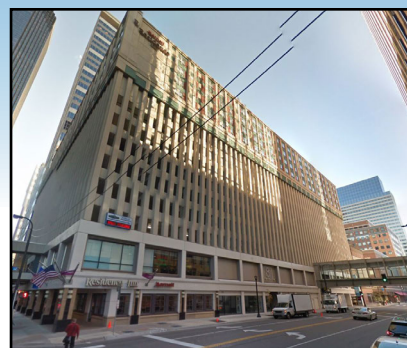
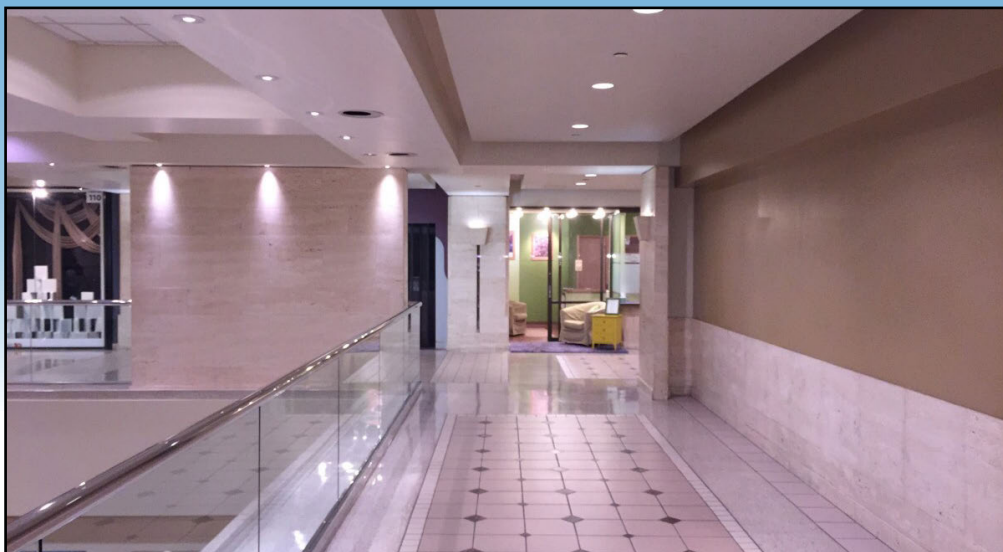
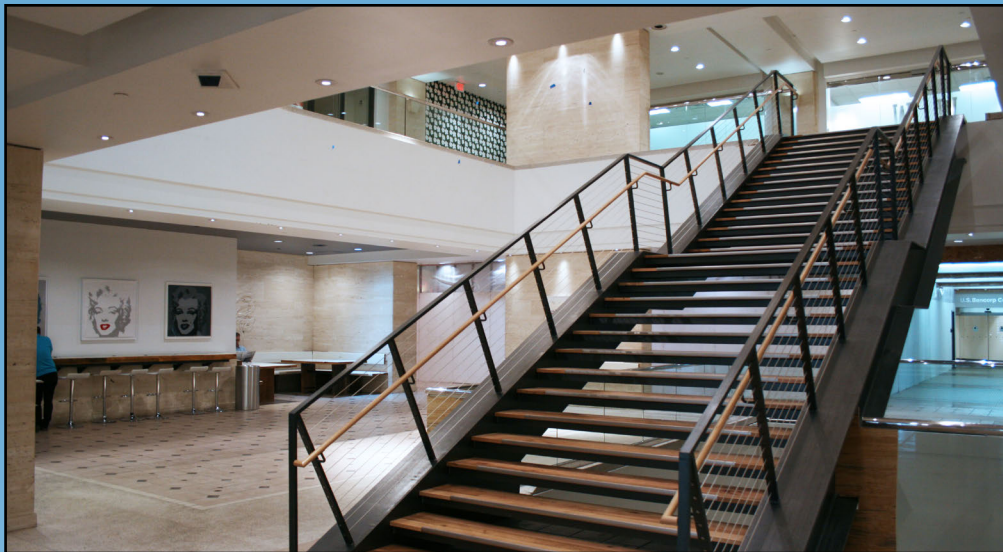
leasing@hempelcompanies.com

811 LASALLE
811 LASALLE AVE, MINNEAPOLIS, MN 55402

BRENT JACOBSON
BEN KRŠNAK

612.355.2609
612.355.2608





leasing@hempelcompanies.com

811 LASALLE
811 LASALLE AVE, MINNEAPOLIS, MN 55402

BRENT JACOBSON
BEN KRŠNAK

612.355.2609
612.355.2608



Highlights:

- Convenient downtown location
- Skyway connected
- 2 blocks from US Bank & Target Headquarters
- Professional management provided by Hempel

leasing@hempelcompanies.com

811 LASALLE
811 LASALLE AVE, MINNEAPOLIS, MN 55402

BRENT JACOBSON
BEN KRŠNAK

612.355.2609
612.355.2608


HEMPEL
REAL ESTATE

Available Suites :

Click or Scan to View 3D Tours



SCAN ME

Suite 201 - 1,461 SF

Fully equipped restaurant
[Click to view floor plan](#)



SCAN ME

Suite 211 - 749 SF

Former coffee shop
[Click to view floor plan](#)



SCAN ME

Suite 228 - 750 SF

Former massage studio
[Click to view floor plan](#)



SCAN ME

Suite 230 - 2,626 SF

Former restaurant with hood
[Click to view floor plan](#)

3D Tour Coming Soon - Suite 224 - 750 SF

leasing@hempelcompanies.com



TARGET FIELD

TARGET CENTER
MINNEAPOLIS MINNESOTA

FIRST AVENUE
Your Downtown Danceteria Since 1970

811 LaSalle
Ave



TARGET

usbank

WELLS FARGO

IDS center

Hennepin
County Court
House / Gov.
Center

ARMORY

Hennepin Ave

Nicollet Mall

Minneapolis
Convention Center

leasing@hempelcompanies.com

811 LASALLE
811 LASALLE AVE, MINNEAPOLIS, MN 55402

BRENT JACOBSON
BEN KRŠNAK

612.355.2609
612.355.2608



Click or Scan for 3D Tours:



Suite 201



Suite 211

**3D Tour Coming Soon
Suite 224 - 750 SF**



Suite 228



Suite 230

leasing@hempelcompanies.com

811 LaSalle

MAKING
LIVES
BETTER
BY
MAKING
BUILDINGS
BETTER

BRENT JACOBSON 612.355.2609
BEN KRŠNAK 612.355.2608

leasing@hempelcompanies.com



HEMPEL
REAL ESTATE