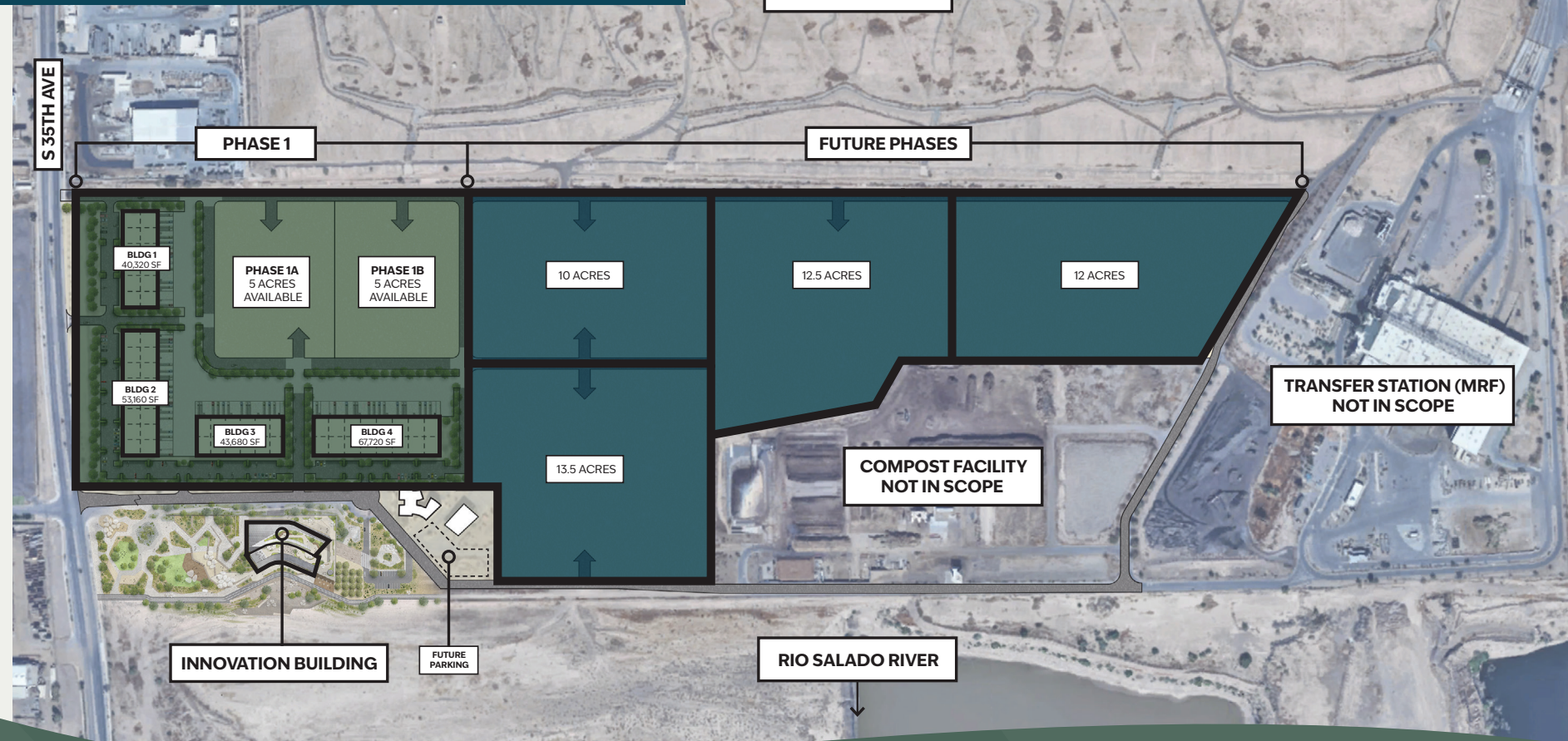


RESOURCE INNOVATION CAMPUS

S SEC 35th Avenue and Lower Buckeye Rd



A site dedicated to the *creation and growth* of the circular economy in Phoenix

For Lease:
28 AC

CBRE

SITE PLAN



PHASE 1

AVAILABLE:
28 AC

For Lease OR
Build to Suit

FUTURE PHASES

AVAILABLE:
48 AC

For Lease OR
Build to Suit

The Resource Innovation Campus (RIC) is dedicated to fostering the circular economy in Phoenix, supporting the city's ambitious goals of achieving 50% waste diversion by 2030 and zero waste by 2050.

Envisioned as a hub for innovation, the RIC aims to attract manufacturing processes and conversion technologies that transform waste into valuable resources. It will also serve as a test bed for public-private partnerships and a catalyst for the growth of circular economy-focused companies.

Strategically co-located with City owned facilities including a Transfer Station, Compost Facility, and newly renovated Material Recovery Facility. Tenants who locate on the project site will have the opportunity to gain access to feedstock from these facilities as well as pathways to collaborate with facility operators Circular Services and WeCare Denali.



**Shares Site and access to
New Materials Recovery Facility**

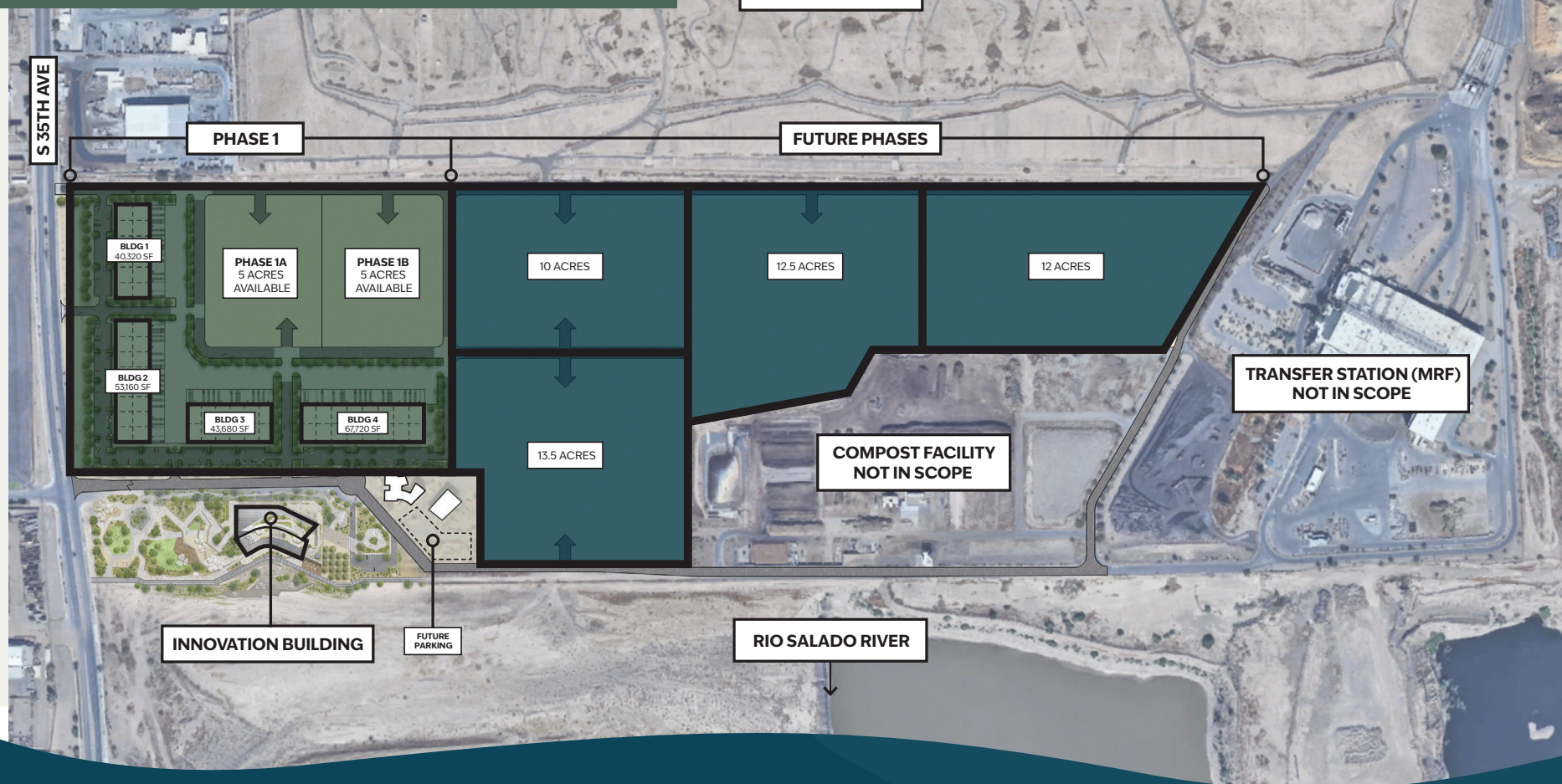


**Shares Site and access to
Compost Facility**



RESOURCE INNOVATION CAMPUS

S SEC 35th Avenue and Lower Buckeye Rd



For More
Information:

JOHN WERSTLER, SIOR
+1 602 735 5504
john.werstler@cbre.com

TANNER FERRANDI
+1 602 735 5624
tanner.ferrandi@cbre.com

CONNIE NELSON
+1 602 735 1994
connie.nelson@cbre.com

CBRE