

Anaheim Corporate Center

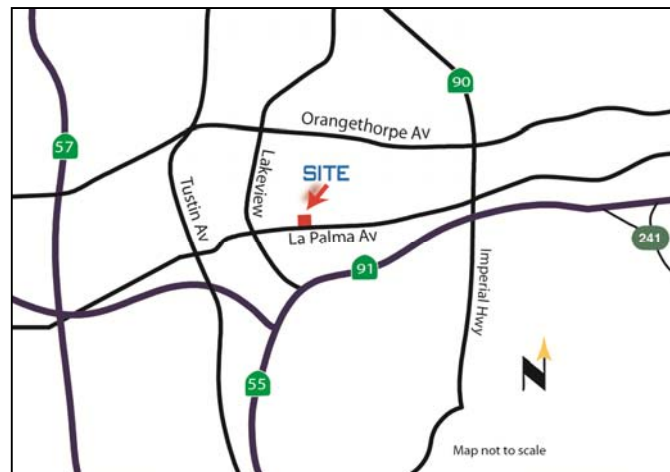
OFFICE SPACE FOR LEASE



5101 La Palma Avenue ~ Anaheim, California

Project Features:

- Asking \$1.65 PSF Full Service Gross
- Suite 201 – 1,415 SF
- 4:1,000 Parking
- Under New Ownership
- Renovations Complete
- Excellent Freeway Access (91,55,57)
- Master Planned Business Park
- Walking Distance to Retail and Restaurants
- Fully Sprinklered
- High End Office Improvements
- Ownership on Site
- Flexible Terms



For more information, please contact:

Erik Thompson

714.564-7151

ethompson@lee-associates.com

DRE #01458292



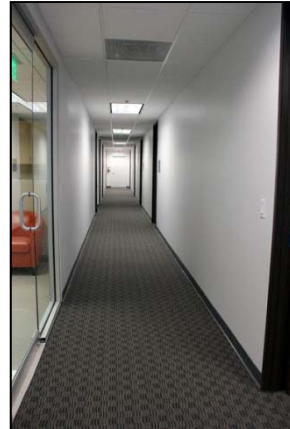
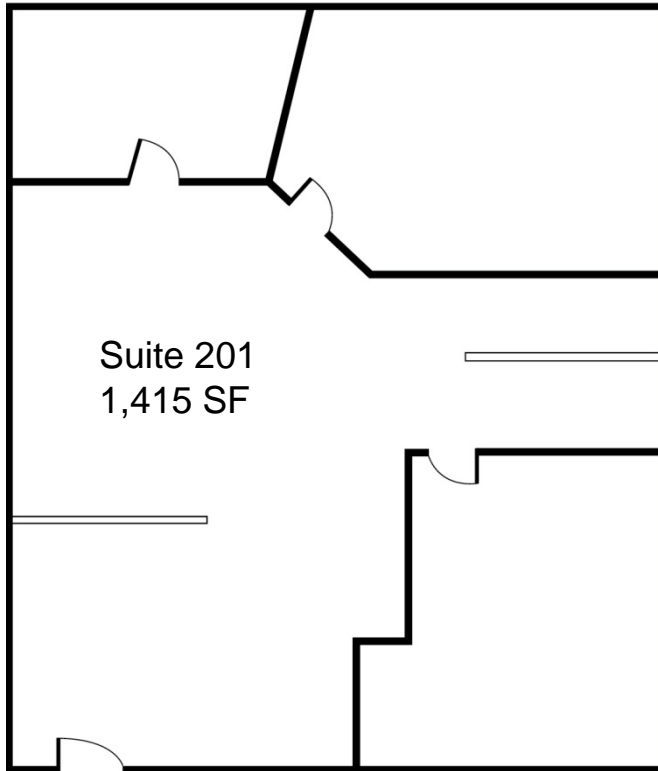
COMMERCIAL REAL ESTATE SERVICES
Corporate ID #01011260

All information contained herein has been provided by Lessor and/or third parties, but has not been independently verified by Lee & Associates or its agent. Lessee and interested parties should independently verify all information communicated by these other sources by Lessor's agent.

Anaheim Corporate Center

OFFICE SPACE FOR LEASE

5101 La Palma Avenue ~ Anaheim, California



For more information, please contact:

Erik Thompson

714.385.1801

ethompson@lee-associates.com

DRE #01458292



COMMERCIAL REAL ESTATE SERVICES

1004 W. Taft Avenue, Suite 150

Orange, CA 92865

P 714.647.9100 | F 714.543.5285

All information contained herein has been provided by Lessor and/or third parties, but has not been independently verified by Lee & Associates or its agent. Lessee and interested parties should independently verify all information communicated by these other sources by Lessor's agent.