



FOR LEASE: SHOWROOM BUILDING

26881 Jefferson Avenue, Suite A, Murrieta, CA 92562

Property Information

- Suite A: +/- 4,249 square feet
- Jefferson Avenue Frontage Traffic Count; 30,731 CPD (Regis)
- Showroom/Retail Building
- Lobby, private office, two (2) private restrooms, and warehouse
- Near Murrieta Auto Mall "Auto Row": join BMW, Volkswagen, West Coast Exotics, and more
- Zoned BP: City of Murrieta (variety of uses allowed)
- Two (2) +/- 12' X 12' ground level loading doors
- Monument and Building Signage
- Private outdoor fenced yard area
- 41 parking spaces (4.63:1,000)

Lease Rate: \$2.15/SF, NNN (est. NNN \$0.28/SF)

For More Information: Christopher J. Masino, SIOR
(951) 795-4556 | cmasino@masinoindustrial.com



+/-4,249 Square Feet

41707 Winchester Rd | Suite 300 | Temecula | CA | 92590

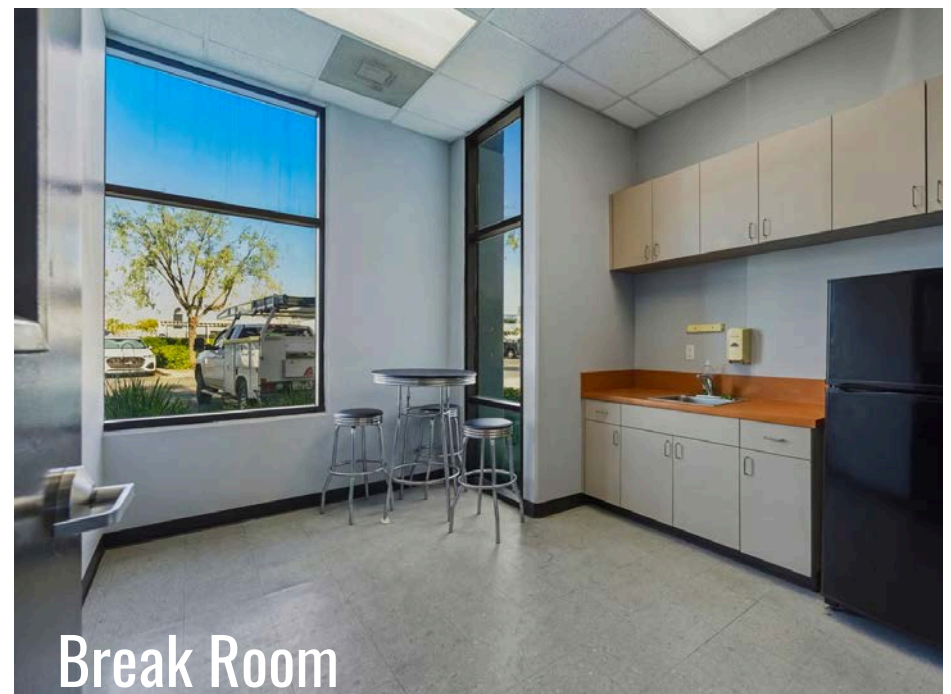
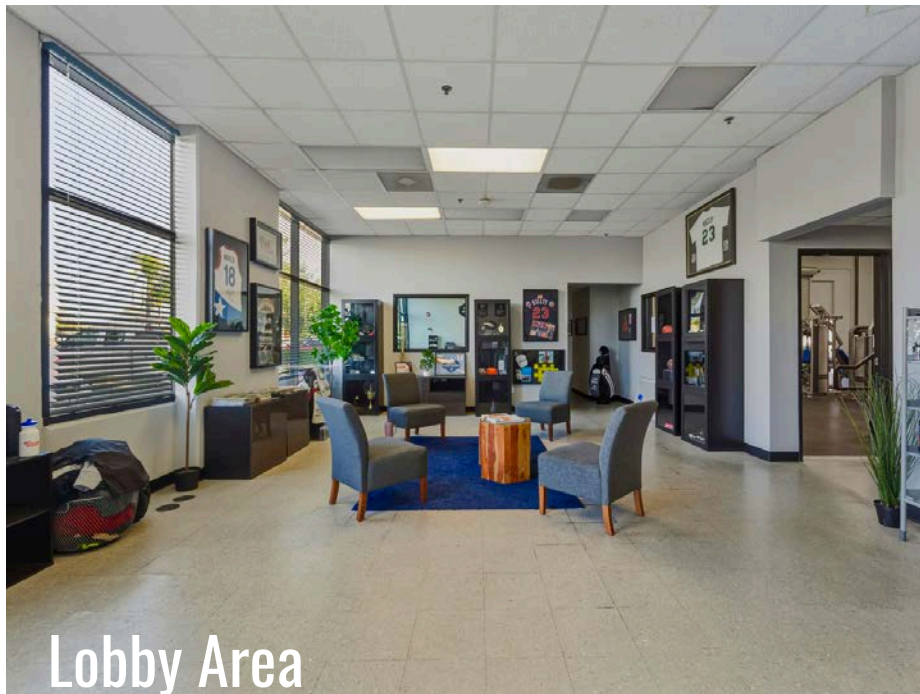
The information contained herein has been obtained from a variety of sources and Masino Commercial, its agents, representatives and property owner make no warranty or representation regarding its accuracy or completeness. The delivery of this information does not constitute an offer and no transaction shall be considered binding until sales or lease agreement has been fully executed by all parties.



FOR LEASE: SHOWROOM BUILDING

26881 Jefferson Avenue, Suite A, Murrieta, CA 92562

Selected Interior Images



For More Information: Christopher J. Masino, SIOR
(951) 795-4556 | cmasino@masinoindustrial.com

41707 Winchester Rd | Suite 300 | Temecula | CA | 92590

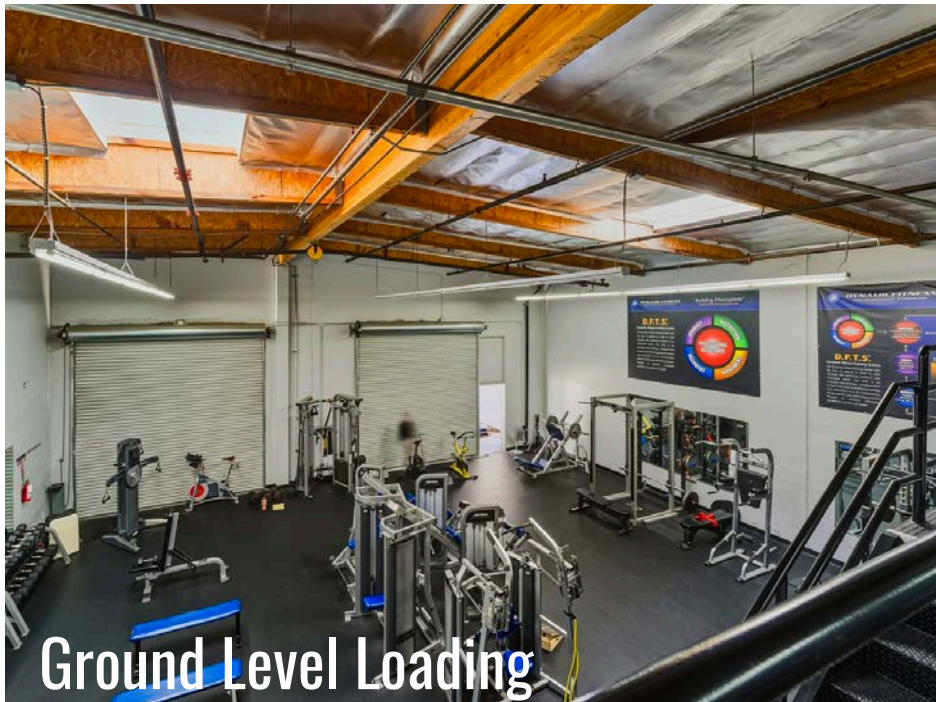
The information contained herein has been obtained from a variety of sources and Masino Commercial, its agents, representatives and property owner make no warranty or representation regarding its accuracy or completeness. The delivery of this information does not constitute an offer and no transaction shall be considered binding until sales or lease agreement has been fully executed by all parties.



FOR LEASE: SHOWROOM BUILDING

26881 Jefferson Avenue, Suite A, Murrieta, CA 92562

Selected Interior Images



Ground Level Loading



Secured Storage Yard

For More Information: Christopher J. Masino, SIOR
(951) 795-4556 | cmasino@masinoindustrial.com

41707 Winchester Rd | Suite 300 | Temecula | CA | 92590

The information contained herein has been obtained from a variety of sources and Masino Commercial, its agents, representatives and property owner make no warranty or representation regarding its accuracy or completeness. The delivery of this information does not constitute an offer and no transaction shall be considered binding until sales or lease agreement has been fully executed by all parties.



FOR LEASE: SHOWROOM BUILDING

26881 Jefferson Avenue, Suite A, Murrieta, CA 92562

LOCATED ON AUTO ROW!!

Selected Exterior Images



Monument Signage

For More Information: Christopher J. Masino, SIOR
(951) 795-4556 | cmasino@masinoindustrial.com

41707 Winchester Rd | Suite 300 | Temecula | CA | 92590

The information contained herein has been obtained from a variety of sources and Masino Commercial, its agents, representatives and property owner make no warranty or representation regarding its accuracy or completeness. The delivery of this information does not constitute an offer and no transaction shall be considered binding until sales or lease agreement has been fully executed by all parties.



FOR LEASE: SHOWROOM BUILDING

26881 Jefferson Avenue, Suite A, Murrieta, CA 92562

Location Information

- Minutes from Old Town Murrieta, Murrieta Auto Mall, Murrieta City Hall, and City of Temecula
- Unique location with easy access to I-15 and I-215 via French Valley Parkway, Murrieta Hot Springs Road, or Winchester Road
- Regionally located within the greater Southwest Riverside County market
- Close to amenities including, restaurants, banking, business services, and much more



26881 Jefferson Avenue, Suite A
Murrieta, CA
+/-4,249 Square Feet
For Lease: \$2.15/NNN



For More Information: Christopher J.Masino, SIOR
 (951) 795-4556 | cmasino@masinoindustrial.com



41707 Winchester Rd | Suite 300 | Temecula | CA | 92590

The information contained herein has been obtained from a variety of sources and Masino Commercial, its agents, representatives and property owner make no warranty or representation regarding its accuracy or completeness. The delivery of this information does not constitute an offer and no transaction shall be considered binding until sales or lease agreement has been fully executed by all parties.

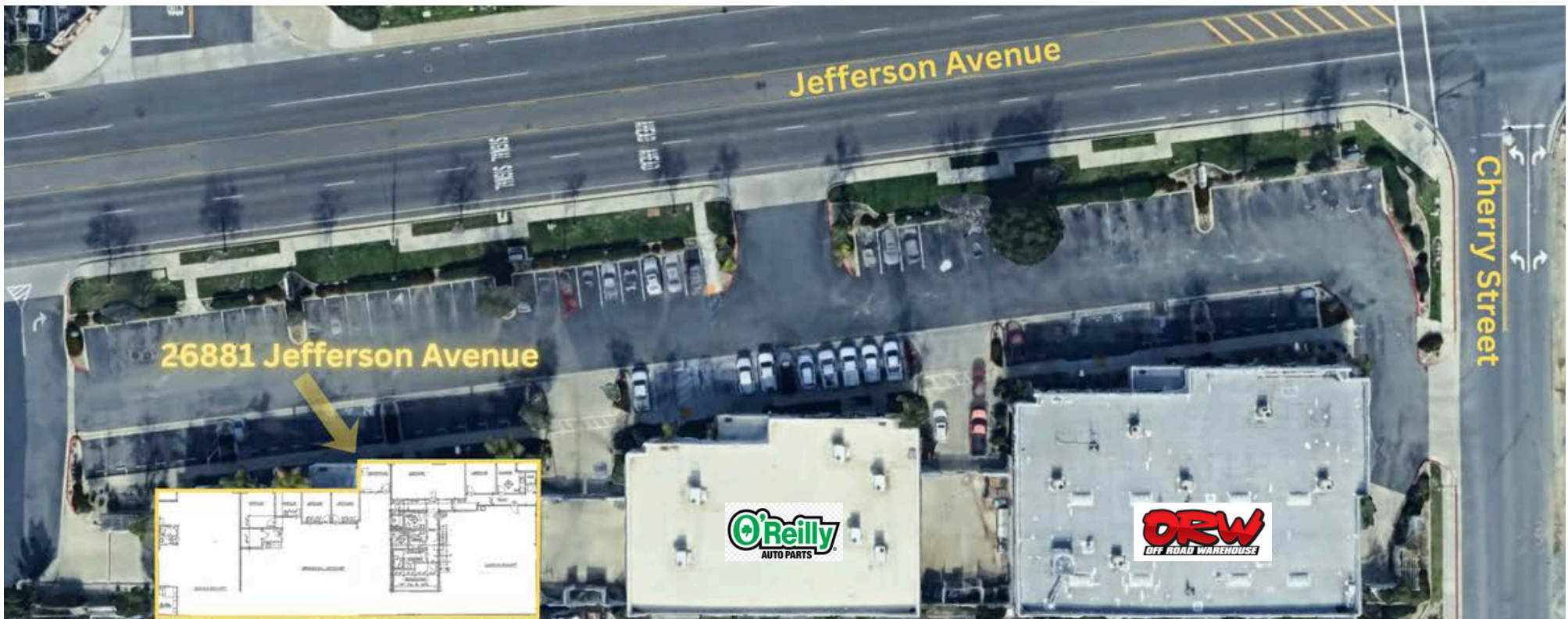


FOR LEASE: SHOWROOM BUILDING

26881 Jefferson Avenue, Suite A, Murrieta, CA 92562

Project and Site Plan

Site Plan



For More Information: Christopher J. Masino, SIOR
(951) 795-4556 | cmasino@masinoindustrial.com

41707 Winchester Rd | Suite 300 | Temecula | CA | 92590

The information contained herein has been obtained from a variety of sources and Masino Commercial, its agents, representatives and property owner make no warranty or representation regarding its accuracy or completeness. The delivery of this information does not constitute an offer and no transaction shall be considered binding until sales or lease agreement has been fully executed by all parties.



FOR LEASE: SHOWROOM BUILDING

26881 Jefferson Avenue, Suite A, Murrieta, CA 92562

Suite Floor Plan

26881 Jefferson Avenue
+/-8,886 SF



For More Information: Christopher J. Masino, SIOR
(951) 795-4556 | cmasino@masinoindustrial.com

41707 Winchester Rd | Suite 300 | Temecula | CA | 92590

The information contained herein has been obtained from a variety of sources and Masino Commercial, its agents, representatives and property owner make no warranty or representation regarding its accuracy or completeness. The delivery of this information does not constitute an offer and no transaction shall be considered binding until sales or lease agreement has been fully executed by all parties.



FOR LEASE: SHOWROOM BUILDING

26881 Jefferson Avenue, Suite A, Murrieta, CA 92562

Pricing Matrix

Suite A +/-4,249 Square Feet

Unit(s)	Square Footage	Base Rent/SF, *NNN
B	4,637	JUST LEASED
A	4,249	\$2.15
Base Rent plus estimated *NNN of \$0.28/SF		
Last Updated:	3/11/2026	

For More Information: Christopher J. Masino, SIOR
(951) 795-4556 | cmasino@masinoindustrial.com

41707 Winchester Rd | Suite 300 | Temecula | CA | 92590

The information contained herein has been obtained from a variety of sources and Masino Commercial, its agents, representatives and property owner make no warranty or representation regarding its accuracy or completeness. The delivery of this information does not constitute an offer and no transaction shall be considered binding until sales or lease agreement has been fully executed by all parties.