

POR. SE 1/4 SEC. 29 T.3S. R.9E. M.D.B.& M.  
CITY OF MODESTO - BLK. 57 (13M57)

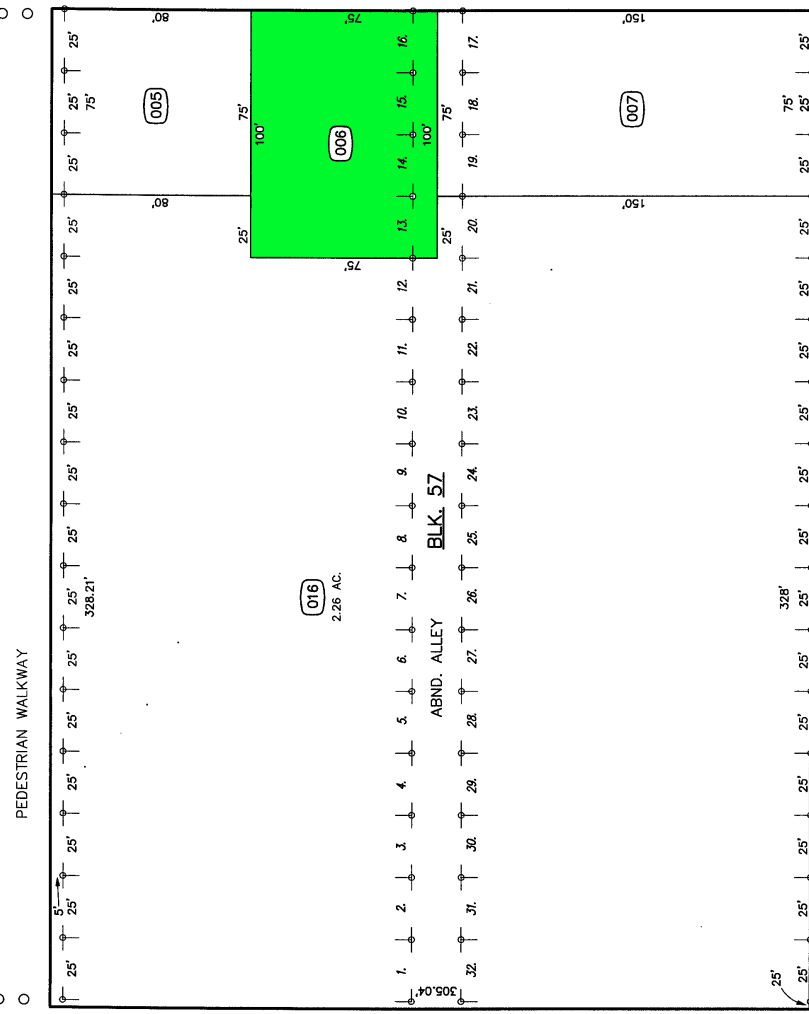
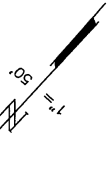
002 173 105 - 042

THIS MAP FOR  
ASSESSMENT PURPOSES ONLY  
Copyright 2001 Stanislaus County  
All rights reserved

037

80'

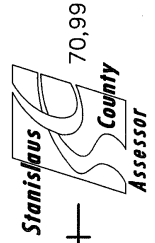
61' 10TH STREET 70'



80' J STREET

048

Back To  
Book  
Index



UNION PACIFIC CORP. R.R.  
(NO LONGER ON GROUND)  
88' 9TH STREET

70,99

FROM 103-08  
DRAWN 3-18-69  
REVISED 1-21-72, 9-9-98, 11-19-98, 11-30-98, 7-13-07 (VDH)

104-003

105 - 042