



2 Versatile Land Lots Available off N. Market St.

Sealy Real Estate Services
333 Texas Street, Suite 1050
Shreveport, LA 71101
318.222.8700
www.sealynet.com

Patrick Beauvais
Direct 318.698.1115
Mobile 318.458.2800
patrickb@sealynet.com



Offering Summary

Available SF:

Lot Size: 2.11 Acres

Price / Acre: \$189,573

Zoning: R-3

Property Overview

With convenient access to I-220, I-20, and North Market St (US-71). This property is well suited for multifamily or residential development. The location provides easy access to shopping, dining, and essential services, with a variety of retail centers, grocery stores, restaurants, and medical facilities just a short drive away. This site would also be ideal for rezoning to accommodate Industrial uses

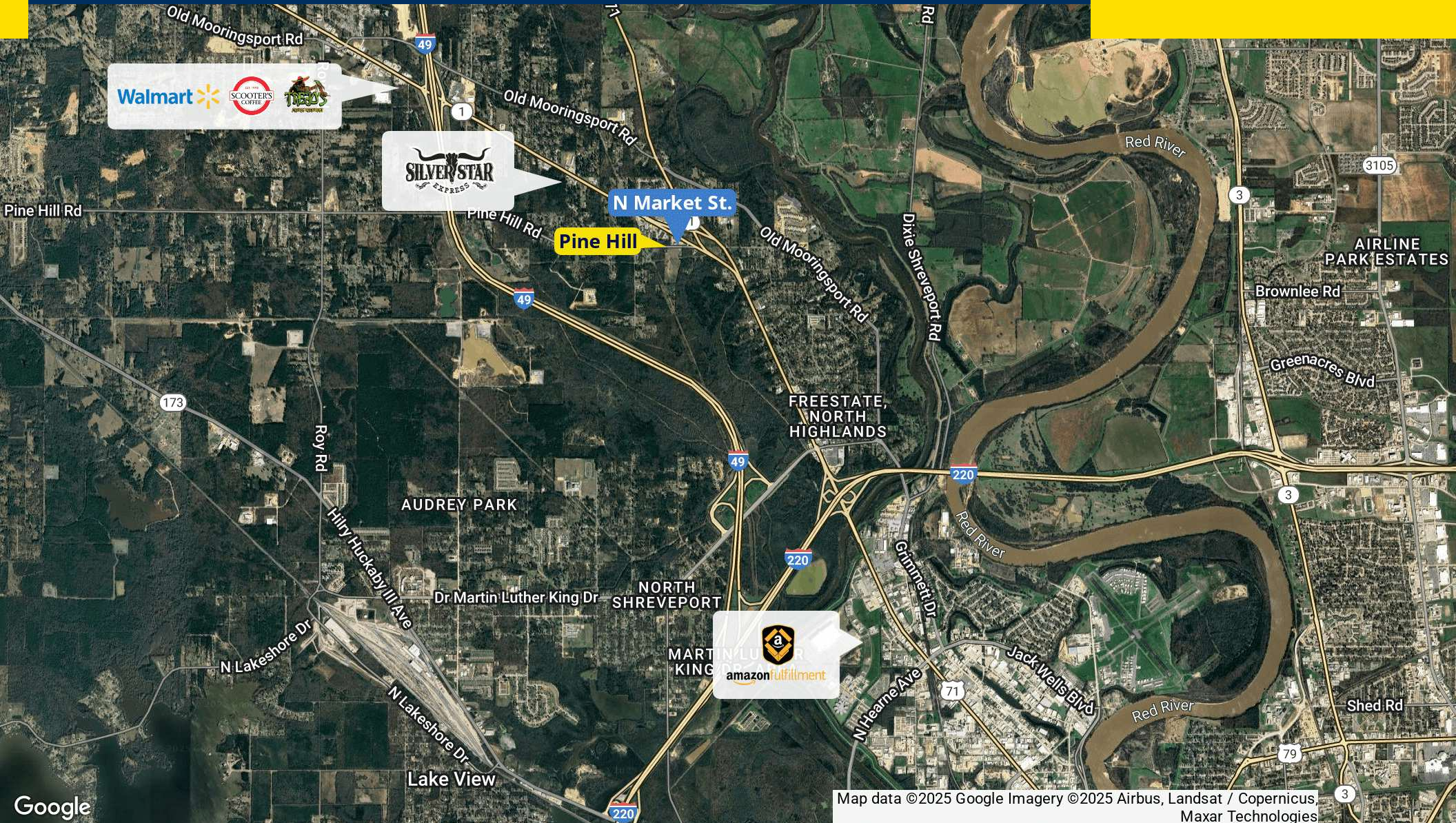


Offering Summary

Sale Price:	\$350,000
Lease Rate:	\$5,000.00 per month (NNN)
Lot Size:	1.33 Acres
Price / Acre:	\$263,158
Zoning:	I-1

Property Overview

Situated just west of 4319 North Market, this site offers a versatile location suited for a range of commercial or industrial uses, including truck parking, storage, or warehousing with easy access to I-49 (approximately 2 miles) and I-220 (approximately 3 miles), the property offers convenient connectivity to major transportation routes, ideal for businesses seeking strategic location and logistics advantages.



Map data ©2025 Google Imagery ©2025 Airbus, Landsat / Copernicus, Maxar Technologies

Sealy Real Estate Services
333 Texas Street, Suite 1050
Shreveport, LA 71101
318.222.8700
www.sealynet.com

Patrick Beauvais
Direct 318.698.1115
Mobile 318.458.2800
patrickb@sealynet.com

All information set forth in this brochure has been obtained from the owner, personal observation, or other reliable sources. Sealy Real Estate Services, LLC does not guarantee the accuracy of this information and makes no representations or warranties, expressed or implied, in this brochure. Information contained herein is subject to change without notice.