

**44004 WOODWARD AVENUE  
BLOOMFIELD HILLS, MICHIGAN**

**OFFICE FOR LEASE**

**1,272 - 4,591 Square Feet Available**



**SIGNATURE  
ASSOCIATES**  
KNOW SIGNATURE | KNOW RESULTS

**BLOOMFIELD BOULEVARD BUILDING**



## PROPERTY FEATURES

- 4,591 square feet available
  - Suite 107: 1,272 Sq. Ft. - \$12.95/sq. ft. G + E
  - Suite 201: 1,519 Sq. Ft. - \$14.95/sq. ft. G + E
  - Suite 303: 1,800 Sq. Ft. - \$14.95/sq. ft. G + E
- Move-in ready suites with furniture available
- Excellent value on Woodward Avenue in Bloomfield Hills
- On-site property management
- Close proximity to Trinity Health Oakland Hospital
- Recently renovated/updated



For more information, please contact:

**DAN MORROW**  
(248) 799 3144  
dmorrow@signatureassociates.com

**DAVE MILLER**  
(248) 948 4183  
dmiller@signatureassociates.com

**SIGNATURE ASSOCIATES**  
One Towne Square, Suite 1200  
Southfield, MI 48076  
www.signatureassociates.com

Information is subject to verification and no liability for errors or omissions is assumed. Price is subject to change and listing withdrawal.

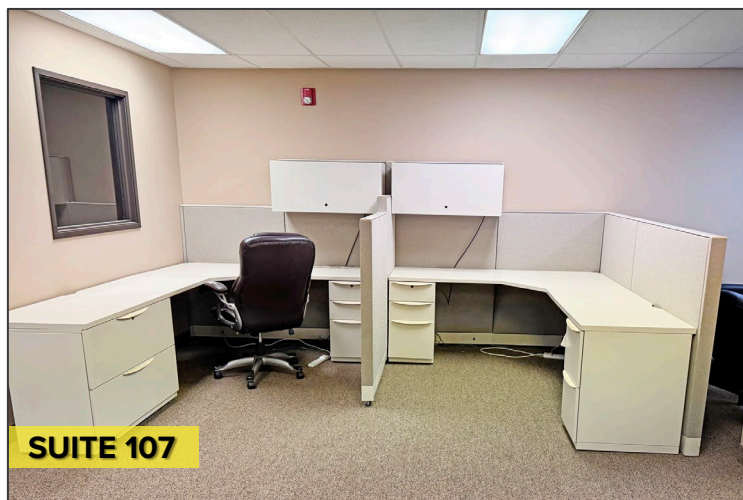
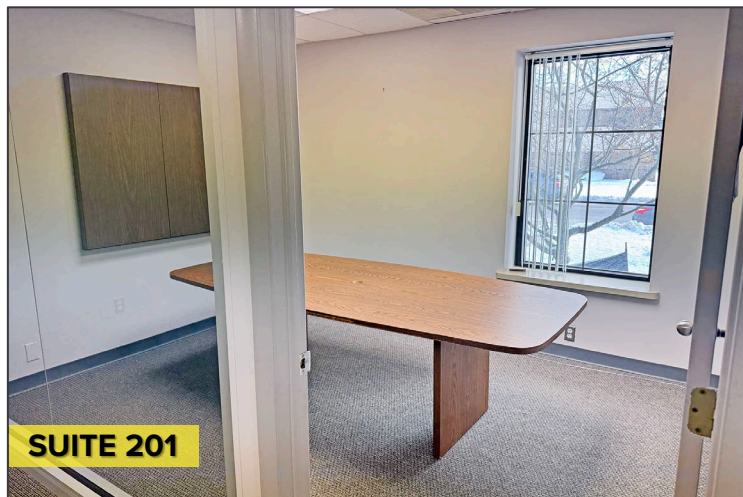


# 44004 Woodward Avenue – Bloomfield Hills, Michigan

## Office For Lease

1,272 - 4,591  
Square Feet  
AVAILABLE

### Interior Photos



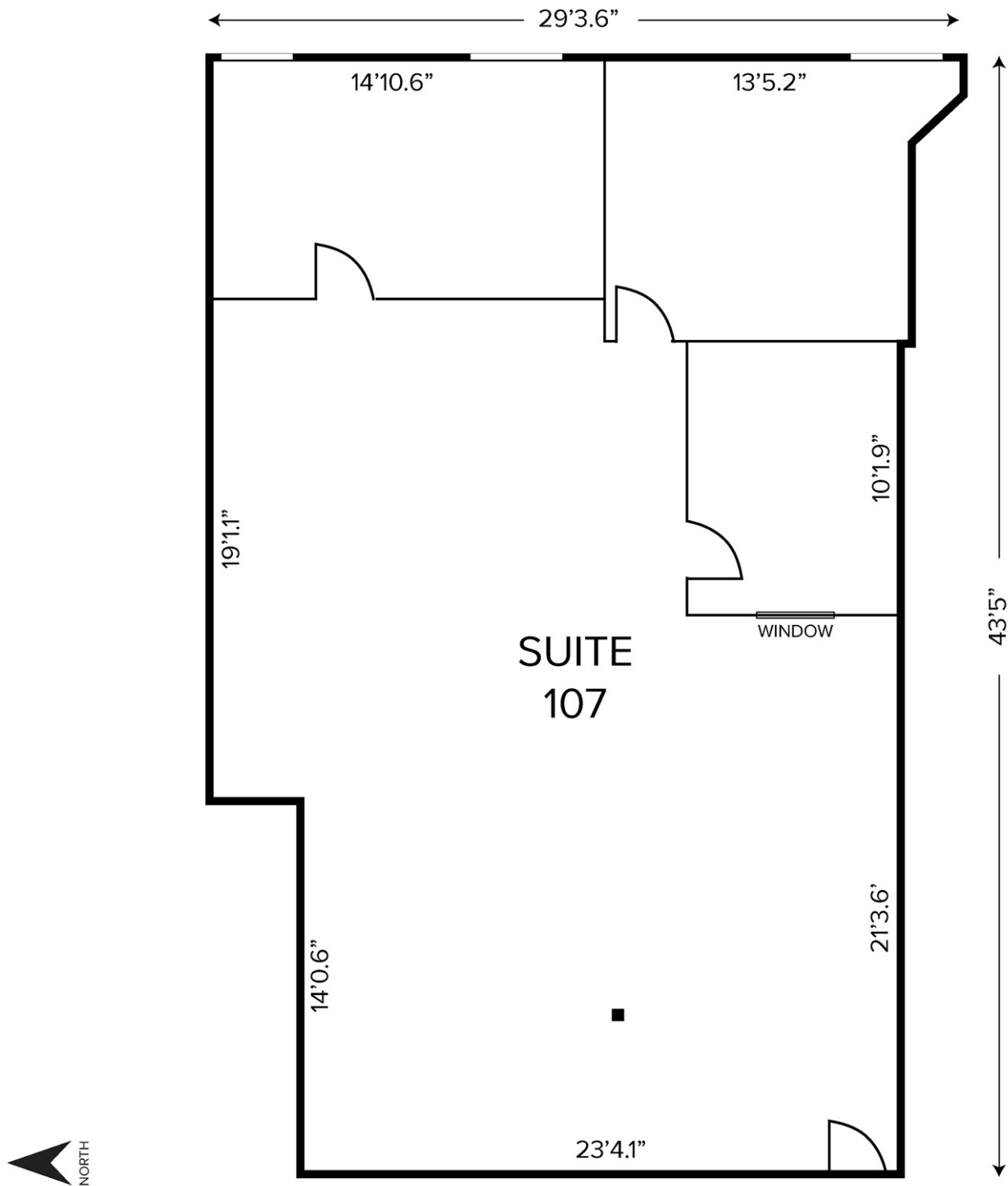
For more information, please contact:

**DAN MORROW**  
(248) 799 3144  
dmorrow@signatureassociates.com

**DAVE MILLER**  
(248) 948 4183  
dmiller@signatureassociates.com

**SIGNATURE ASSOCIATES**  
One Towne Square, Suite 1200  
Southfield, MI 48076  
www.signatureassociates.com

Floor Plan



For more information, please contact:

**DAN MORROW**  
(248) 799 3144  
dmorrow@signatureassociates.com

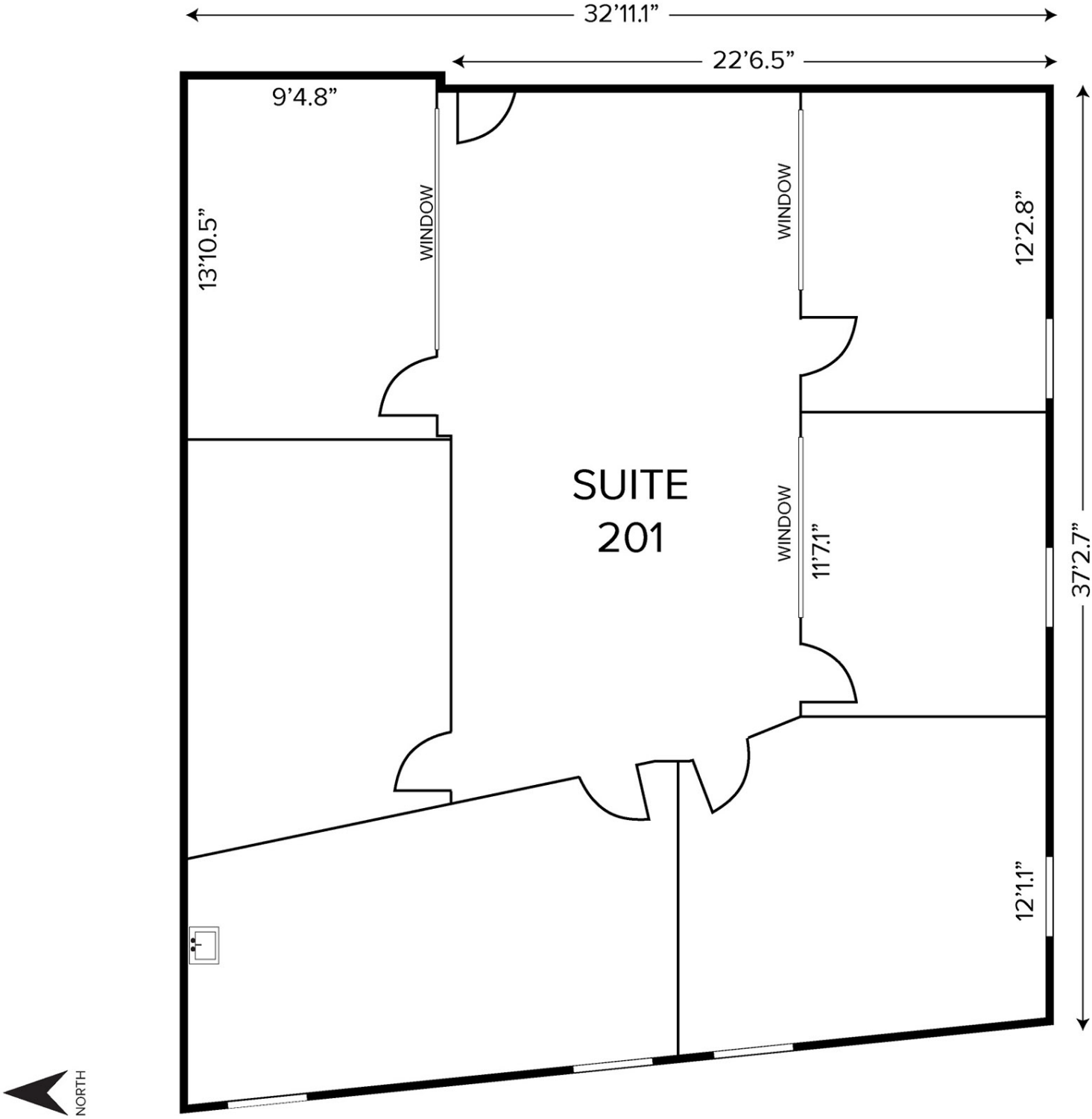
**DAVE MILLER**  
(248) 948 4183  
dmiller@signatureassociates.com

**SIGNATURE ASSOCIATES**  
One Towne Square, Suite 1200  
Southfield, MI 48076  
www.signatureassociates.com

44004 Woodward Avenue – Bloomfield Hills, Michigan  
Office For Lease

1,272 - 4,591  
Square Feet  
AVAILABLE

Floor Plan



For more information, please contact:

**DAN MORROW**  
(248) 799 3144  
dmorrow@signatureassociates.com

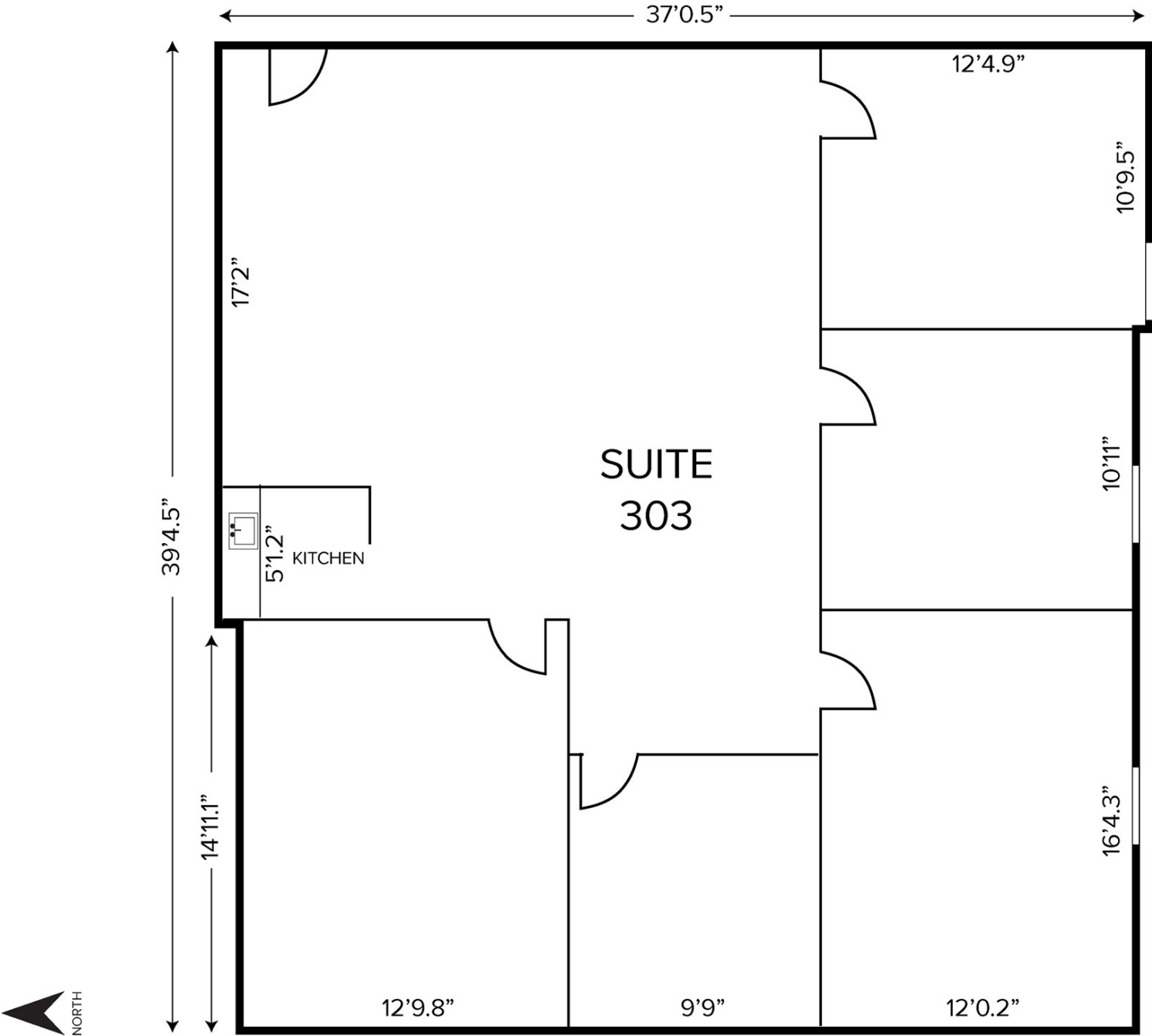
**DAVE MILLER**  
(248) 948 4183  
dmiller@signatureassociates.com

**SIGNATURE ASSOCIATES**  
One Towne Square, Suite 1200  
Southfield, MI 48076  
www.signatureassociates.com

44004 Woodward Avenue – Bloomfield Hills, Michigan  
Office For Lease

1,272 - 4,591  
Square Feet  
AVAILABLE

Floor Plan



For more information, please contact:

**DAN MORROW**  
(248) 799 3144  
dmorrow@signatureassociates.com

**DAVE MILLER**  
(248) 948 4183  
dmiller@signatureassociates.com

**SIGNATURE ASSOCIATES**  
One Towne Square, Suite 1200  
Southfield, MI 48076  
www.signatureassociates.com



# 44004 Woodward Avenue – Bloomfield Hills, Michigan

## Office For Lease

1,272 - 4,591  
Square Feet  
AVAILABLE

### Aerial



For more information, please contact:

**DAN MORROW**  
(248) 799 3144  
dmorrow@signatureassociates.com

**DAVE MILLER**  
(248) 948 4183  
dmiller@signatureassociates.com

**SIGNATURE ASSOCIATES**  
One Towne Square, Suite 1200  
Southfield, MI 48076  
www.signatureassociates.com