

# 1155 W. 23RD STREET

Tempe, AZ 85282

## INDUSTRIAL PROPERTY FOR LEASE



### PROPERTY HIGHLIGHTS

- Zoning - I-2
- Fire Sprinklers
- ± 13' Clear Height
- Abundant Parking
- ± 10' x 10' Overhead Doors
- 120/240 Volt, 3 Phase Power

### OFFERING SUMMARY

Available SF:	2,400 SF
Building Size:	65,080 SF

### UNIT 8A - 2,400 ±SF

- Reception
- One (1) Office
- Two (2) Restrooms
- Storeroom
- Air-Conditioned Warehouse

2150 East Highland Avenue, Suite 207, Phoenix, AZ 85016 // 602.955.3500 // [cutlercommercial.com](http://cutlercommercial.com)

#### FRANKLIN CONNELL

Senior Associate  
602.386.1247 (D) | 480.201.0877 (Mobile/Text)  
[fconnell@cutlercommercial.com](mailto:fconnell@cutlercommercial.com)

#### ROD CROTTY

Associate Broker  
602.386.1225(D)  
[rcrotty@cutlercommercial.com](mailto:rcrotty@cutlercommercial.com)

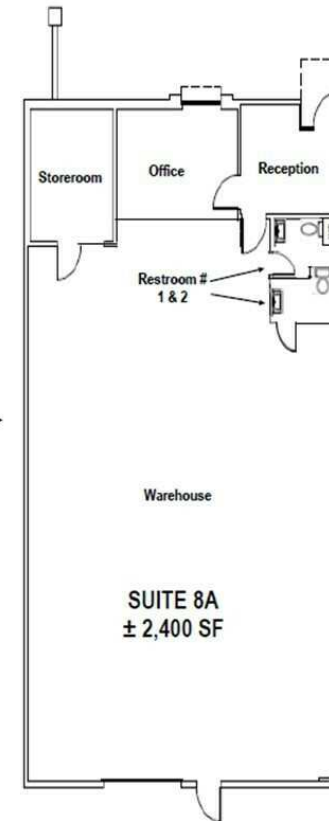
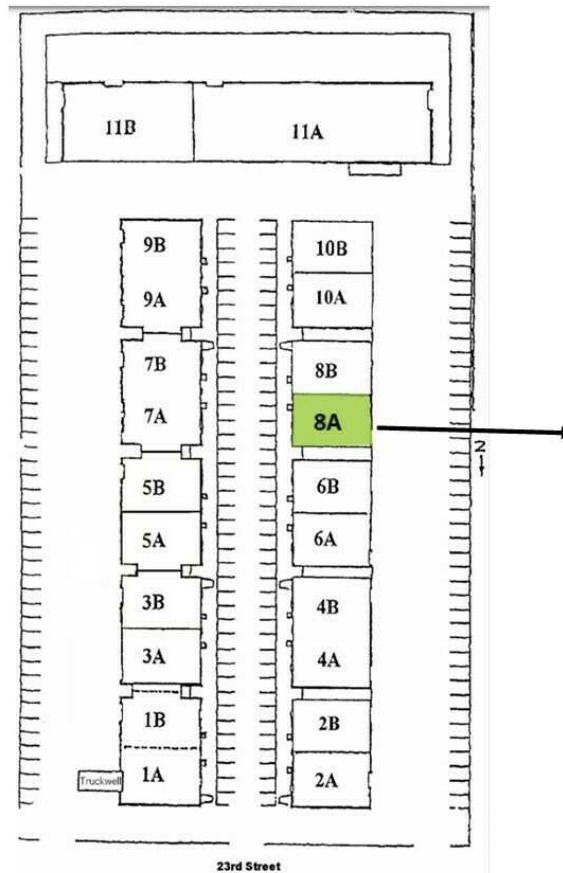
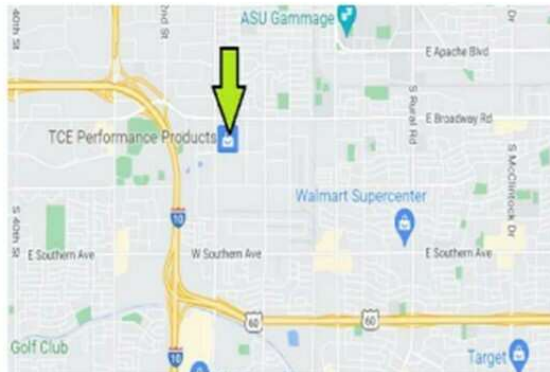


All information furnished is from sources deemed reliable. No representation is made as to the accuracy thereof and it is submitted subject to errors, omissions, changes, or withdrawal without notice and to any special listings conditions, including the rate and manner of payment of commissions for particular offerings imposed by principals or agreed to by the company, the terms of which are available to interested principals or brokers. All dimensions are approximate. Owner and/or Broker make no representations expressed or implied as to the accuracy of floor plan/site plan dimensions.

# 1155 W. 23RD STREET

Tempe, AZ 85282

## INDUSTRIAL PROPERTY FOR LEASE



2150 East Highland Avenue, Suite 207, Phoenix, AZ 85016 // 602.955.3500 // [cutlercommercial.com](http://cutlercommercial.com)

### FRANKLIN CONNELL

Senior Associate  
602.386.1247 (D) | 480.201.0877 (Mobile/Text)  
[fconnell@cutlercommercial.com](mailto:fconnell@cutlercommercial.com)

### ROD CROTTY

Associate Broker  
602.386.1225(D)  
[rcrotty@cutlercommercial.com](mailto:rcrotty@cutlercommercial.com)

