



COMMERCIAL REAL ESTATE CONSULTANTS

2046 E. MURRAY HOLLADAY ROAD
HOLLADAY, UTAH 84117



Property Information

- Suite 201: 1,498 RSF
Lease Rate: \$7.00/SF NNN
(Full Service Rate Available)
- Ample Parking
- Underground Parking Available
- Prestigious Holladay Location
- 27,321 Cars/Day on Murray Holladay Rd
- Located Near the New Holladay Hills Shopping District!

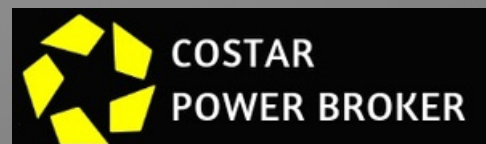
Demographics

	2 Mile	5 Mile	10 Mile
Population	58,508	283,918	840,203
Households	22,957	109,425	298,062
Avg. Household Income	\$111,081	\$96,072	\$91,689

Traffic Counts

Murray Holladay Rd: 27,321 Annual Average Daily Traffic
Highland Drive: 23,725 Annual Average Daily Traffic

Contact
801.617.1700



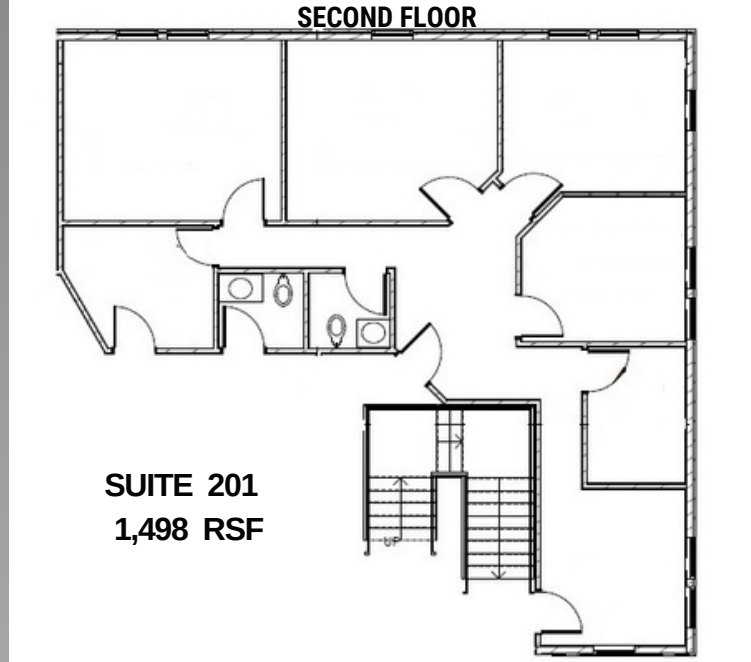
KELLEN KONCAR
KELLEN.KONCAR@CRCNATIONWIDE.COM

DANEILE SNELLING
DANEILE.SNELLING@CRCNATIONWIDE.COM



COMMERCIAL REAL ESTATE CONSULTANTS

2046 E. MURRAY HOLLADAY ROAD
HOLLADAY, UTAH 84117



SUITE 201
1,498 RSF

This information is given with the understanding that all negotiations and/or real estate activity related to the property described above shall be conducted through this cRc Nationwide office. The above information while not guaranteed, was obtained from sources we believe to be reliable.

