

**AVAILABLE FOR  
LEASE**

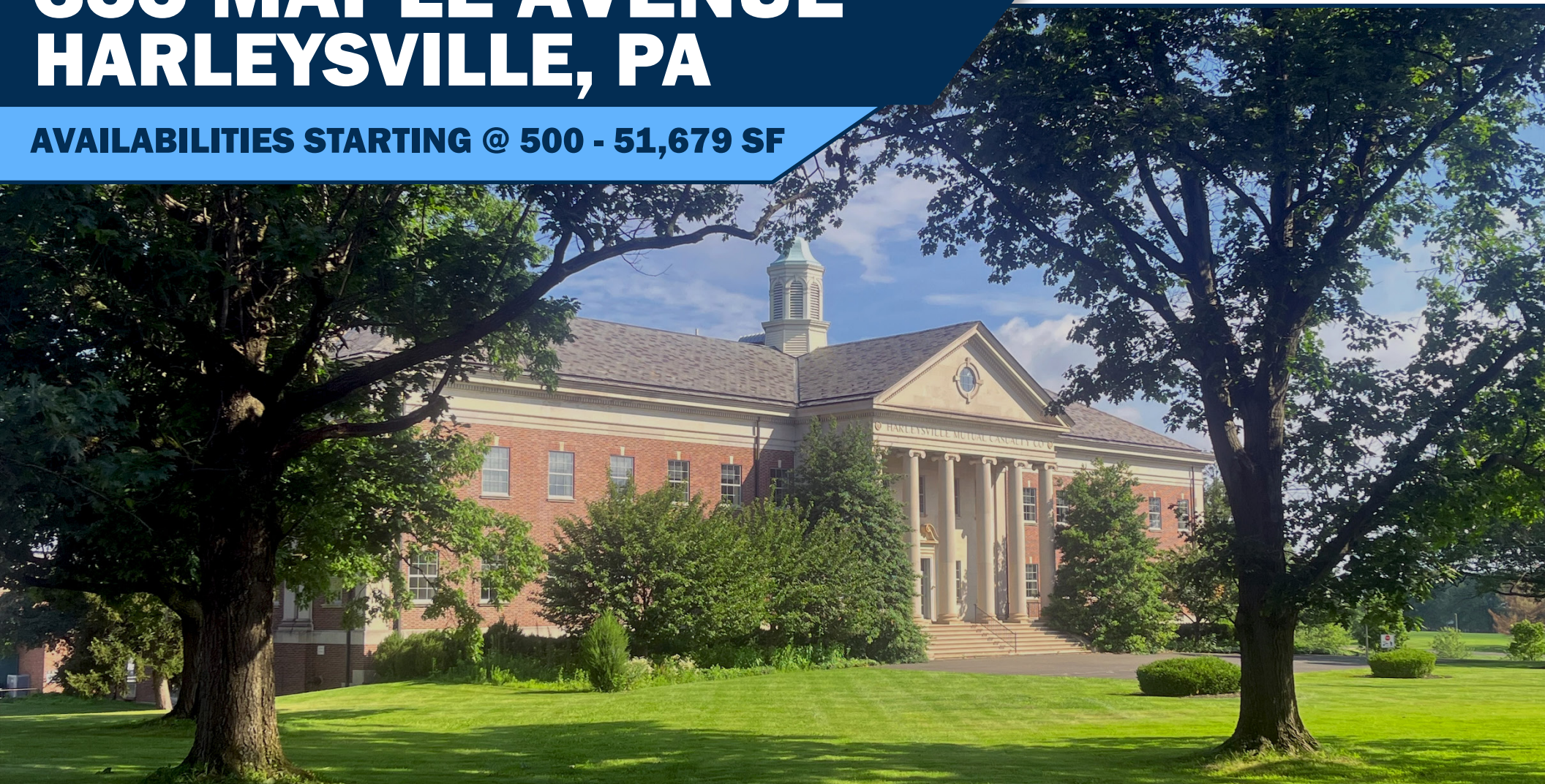
**RETAIL • OFFICE  
& INSTITUTIONAL**



VELOCITY VENTURES

**355 MAPLE AVENUE  
HARLEYSVILLE, PA**

**AVAILABILITIES STARTING @ 500 - 51,679 SF**



**ROB FONTANELLA | ASSOCIATE DIRECTOR  
VELOCITY VENTURE PARTNERS**

 (610) 731-7080  
 [robert@velocityinv.com](mailto:robert@velocityinv.com)



# PROPERTY OVERVIEW & SPECS



## **SQUARE FOOTAGE AVAILABLE**

Total of 51,680 SF on 4 floors

## **PARKING**

4.4/1,000 SF (1,050 spaces)

## **ZONING**

Flexible zoning to allow for a wide array of uses

- Former headquarters for Nationwide Insurance
- Perfect location for institutional users
- Located 3 miles from the Lansdale Interchange
- Signage opportunities available
- All floors elevator serviced
- Backup generator onsite
- Supplemental power through solar panels installed onsite reducing electrical costs

OAK DRIVE

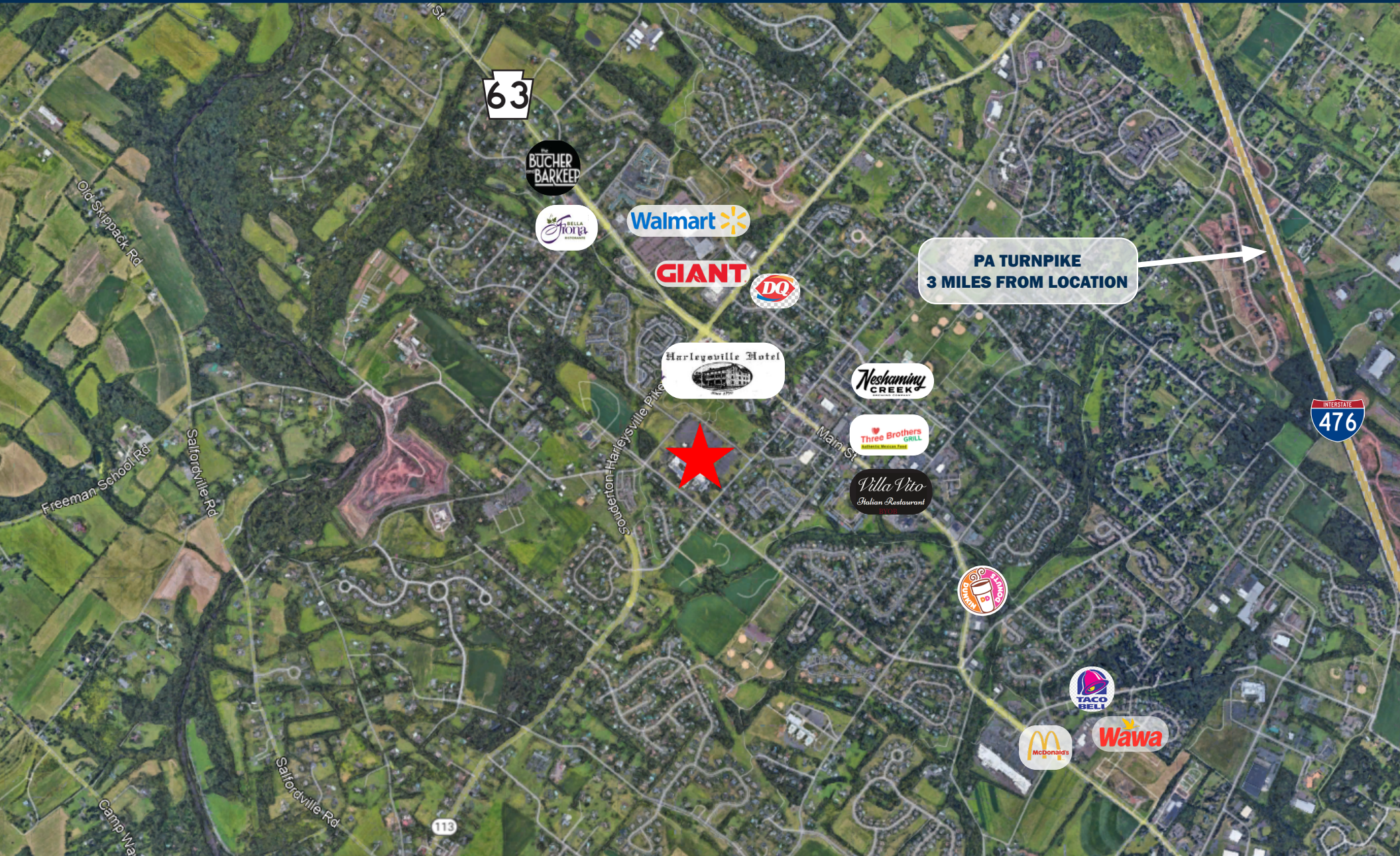
MAPLE AVENUE

MAIN STREET

SOUDERTON HARLEYSVILLE PIKE

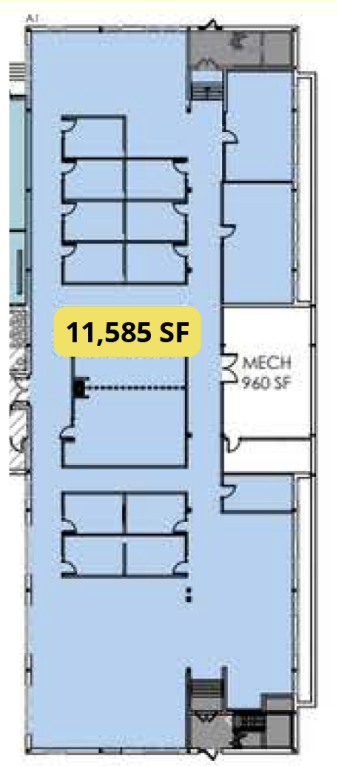
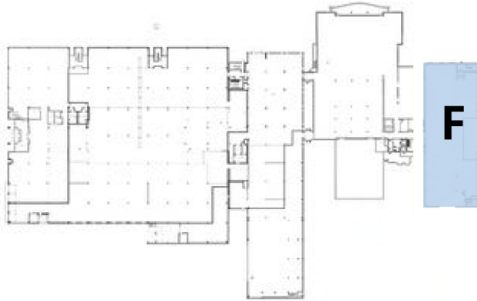


# PROPERTY AERIAL

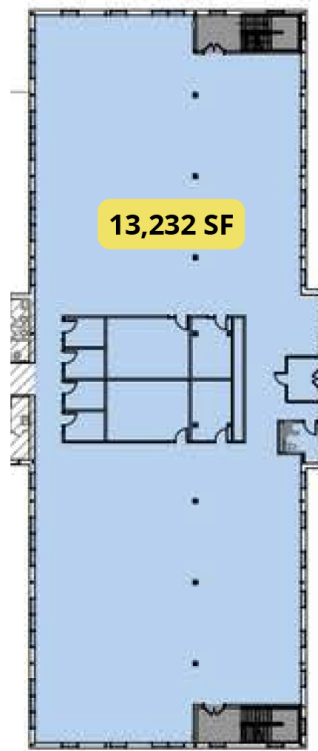




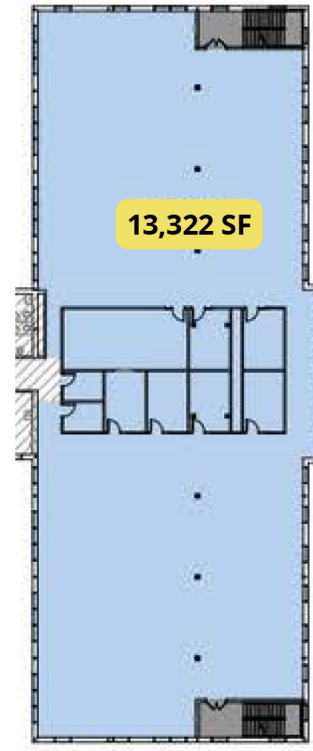
# FLOOR PLAN



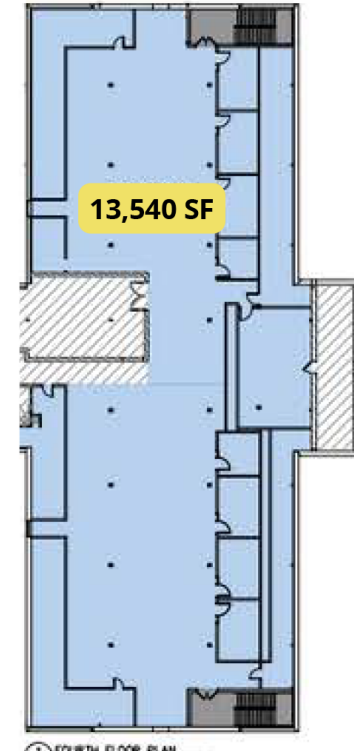
**FIRST FLOOR  
SUITE F**



**SECOND FLOOR  
SUITE F2**



**THIRD FLOOR  
SUITE F3**



**FOURTH FLOOR  
SUITE F4**

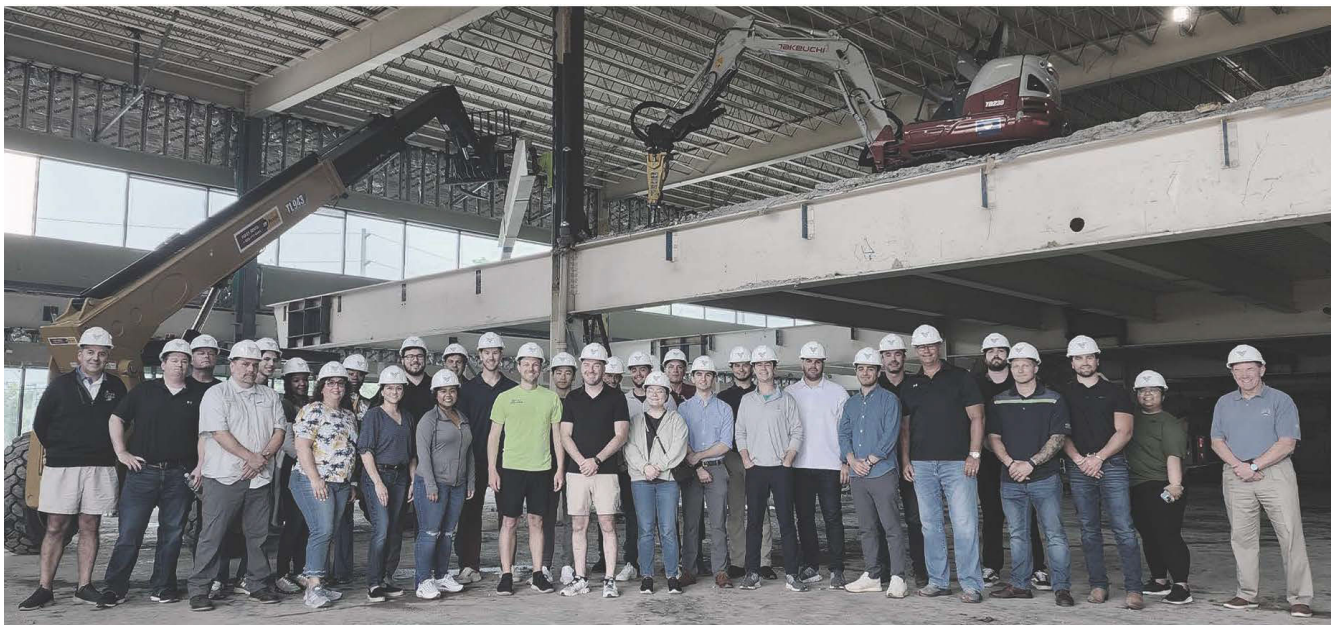


# PHOTOS





# ABOUT VELOCITY



Velocity Venture Partners is a leading developer of industrial real estate throughout the Northeastern Region of the United States and one of the largest owners of industrial space in the region. The firm devotes its time exclusively to industrial & conversion-to-industrial (office/lab/retail to industrial) assets that are located close to densely populated suburban corridors and major transportation arteries.

Velocity has built and maintained a vast network of debt and equity relationships, streamlining the internal funding process for each new acquisition. In addition, the firm's size and nimble approach enables quicker decision making & actions compared to competitors - ranging from acquisitions to leasing, to capex and cosmetic work on newly acquired assets. As a fully integrated firm - with internal infrastructure ranging from construction to property management - Velocity delivers an unmatched approach to strategic industrial acquisitions and asset management. The firm, founded in 2017, currently owns and manages over 8 million square feet of industrial space in the Greater Northeast region - a portfolio comprising more than 350 tenants and 100 properties. The company is led by Gloucester County NJ native, Tony Grelli and Montgomery County PA native, Zach Moore.

**VELOCITY VENTURE PARTNERS, LLC | ONE BELMONT AVENUE, SUITE 520 | BALA CYNWYD PA, 19004-1608 | PHONE: (610) 382-5400**

This brochure is intended for marketing purposes only, is not intended to be complete in all respects, and is provided solely as a convenience for the recipient. Any and all statements, information, and/or drawings contained herein should be independently verified by any recipient of the brochure wishing to rely on same. Neither Velocity Venture Partners LLC ("VVP") nor its owners, principals, subsidiaries, affiliates, members, employees, representatives, or agents (collectively, the "WP Parties") make any claim as to the truth, completeness, and/or accuracy of the contents herein and all VVP Parties hereby expressly disclaim any and all such representations and warranties, both express and implied. The recipient of this brochure waives any and all claims against the VVP Parties arising from and/or relating to the brochure. Any and all intellectual property rights pertaining to any statements, information, and/or drawings in this brochure created by or on behalf of VVP are the sole and exclusive property of VVP. This brochure and the contents herein including, but not limited to, any drawings may not be duplicated, published sold, and/or distributed in part or in whole without the prior written consent of WP.