

WOODLAKE

AVALAIR



WOODLAKE AVALAIR

Woodlake Avalair boast a park-like setting with beautiful mature trees and extensive landscaping. The buildings feature individual entrances, washrooms and loading for most spaces. Located only minutes from I-355 full interchanges at Roosevelt Road and North Avenue and abundant area amenities.

HIGHLIGHTS



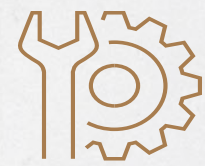
Five building portfolio - 800, 801, 820-860, 821-881, 1000-1080
Parkview Blvd. Lombard, IL



Minutes from I-355 full interchange



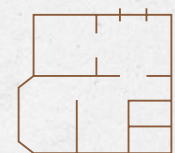
Abundant area amenities



Parking lot improvements



Updated landscaping



Spec suite for immediate occupancy

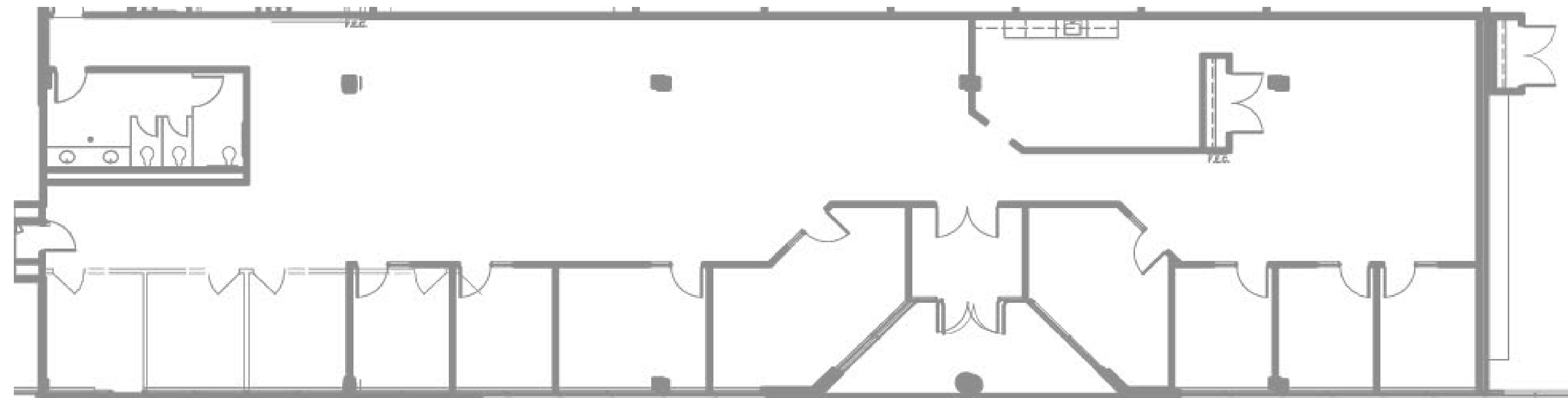
FLOOR PLAN



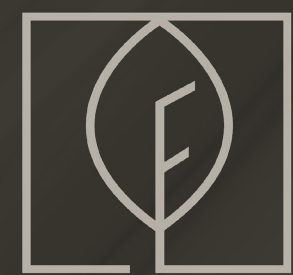
WOODLAKE
AVALAIR

SUITE 851 5,329 SF

- Grade level loading available
- Flex space with air conditioned service space to suit
- Good existing conditions
- Great window line and natural light



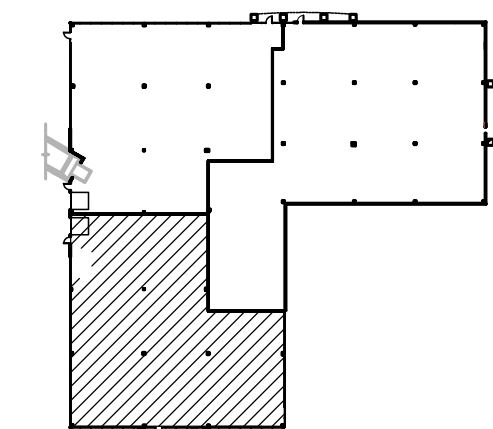
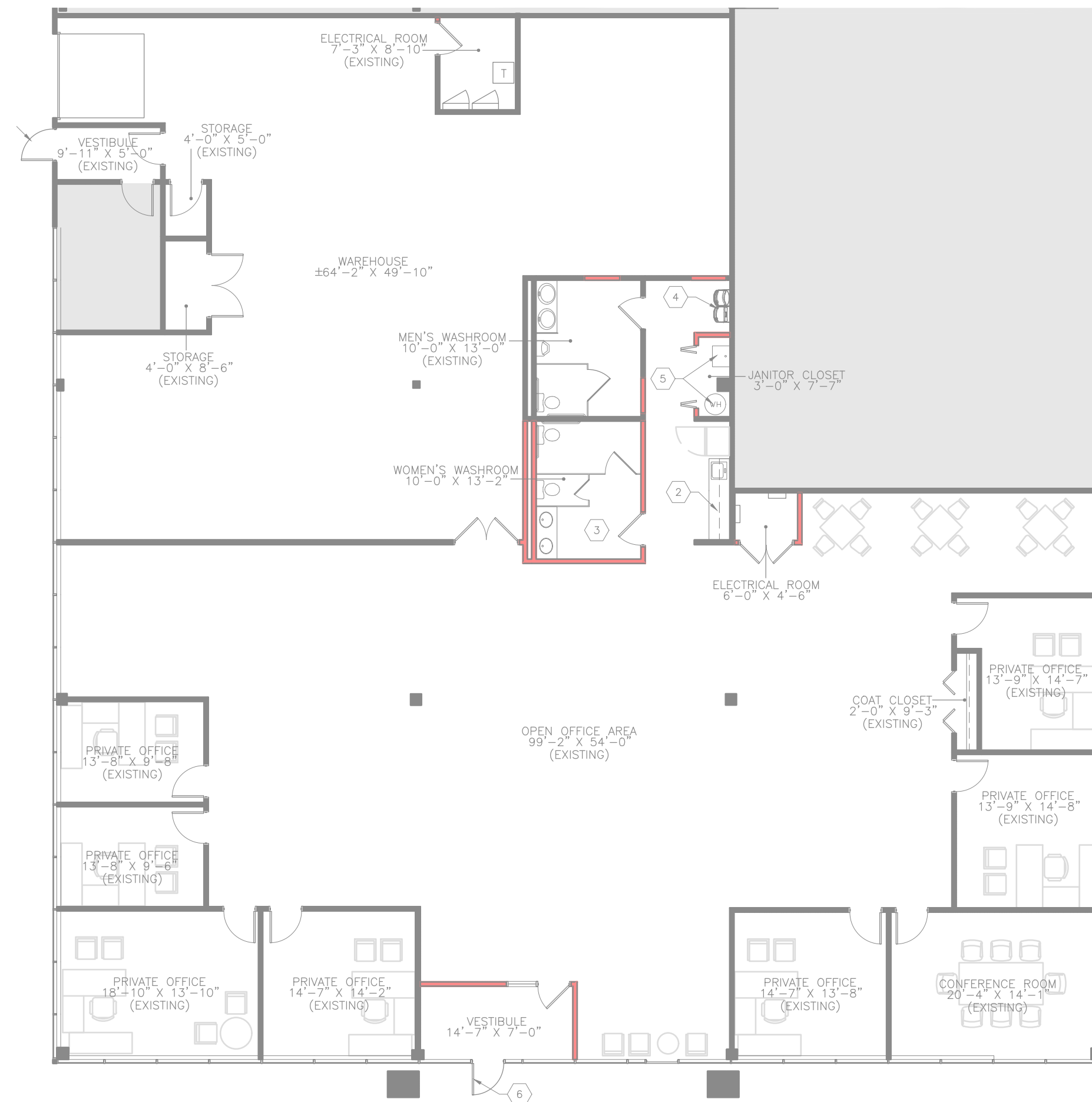
FLOOR PLAN



WOODLAKE
AVALAIR

SUITE 860 8,471 SF

- Drive-in door
- Flex space with approximately 3,000 SF of airconditioned service space
- High indetity location
- Corner suite, office area flooded with natural light



Key Plan

SPACE PHOTOS



Avalair is a New Jersey based, privately held real estate company with over 3 million square feet of premium assets. This property is leased and managed by CBRE.

CONTACT US

JEFFREY MANN

+1 630 573 7076

jeffrey.mann@cbre.com

DAN GRAHAM

+1 847 706 4032

dan.graham@cbre.com



WOODLAKE
AVALAIR

CBRE

©2024 CBRE, Inc. All rights reserved. This information has been obtained from sources believed reliable, but has not been verified for accuracy or completeness. You should conduct a careful, independent investigation of the property and verify all information. Any reliance on this information is solely at your own risk. CBRE and the CBRE logo are service marks of CBRE, Inc. All other marks displayed on this document are the property of their respective owners, and the use of such logos does not imply any affiliation with or endorsement of CBRE. Photos herein are the property of their respective owners. Use of these images without the express written consent of the owner is prohibited. PMStudio_April2023