

Industrial | For Lease

CBRE

12755 Moya Blvd.

12755 Moya Blvd.
Reno, NV 89506
www.cbre.com/reno

Available Now!

±70,070 SF Available





Warehouse Space

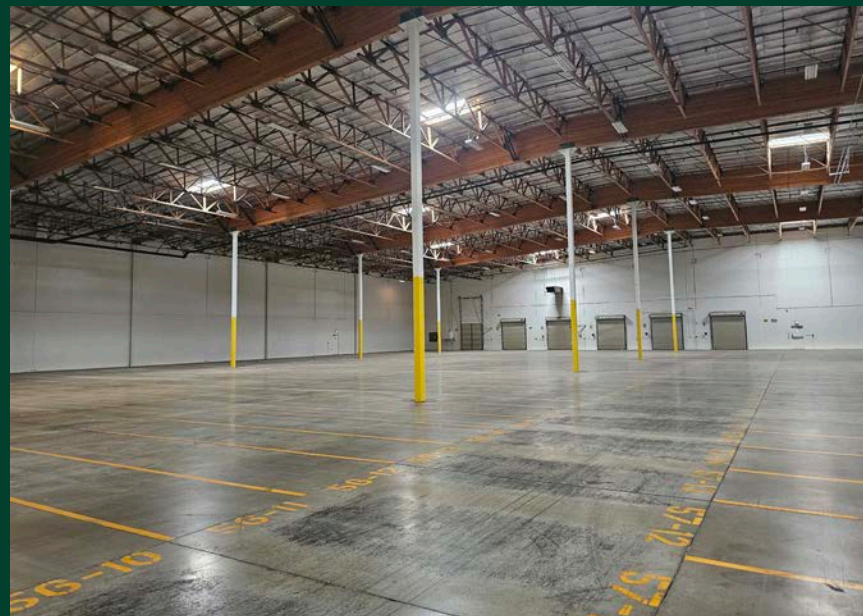
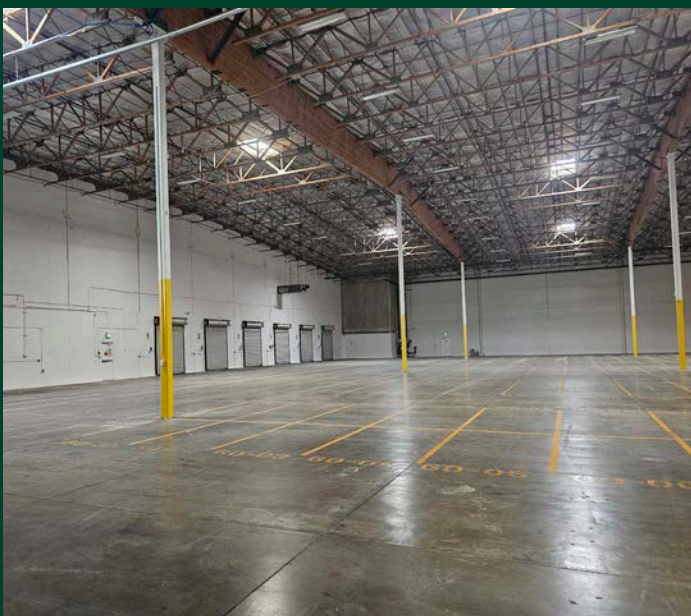
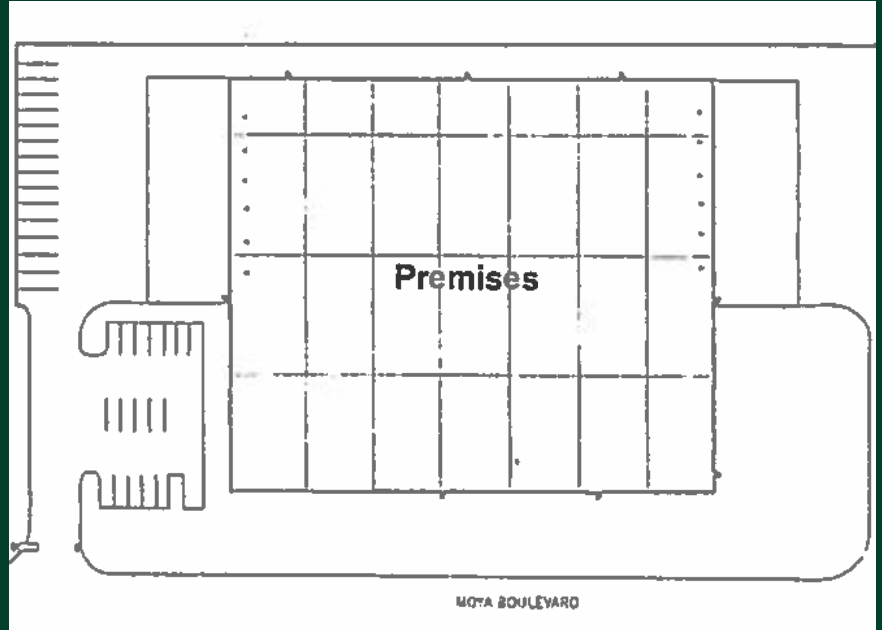
Property Summary

12755 Moya Boulevard consists of a stand-alone $\pm 70,070$ SF cross docked industrial building with $\pm 2,000$ SF office space, 26' clear height and 40' x 70' column spacing. Additionally, this building has 800 Amps of power, ESFR sprinklers and ample parking.

Property Features

Building Specs

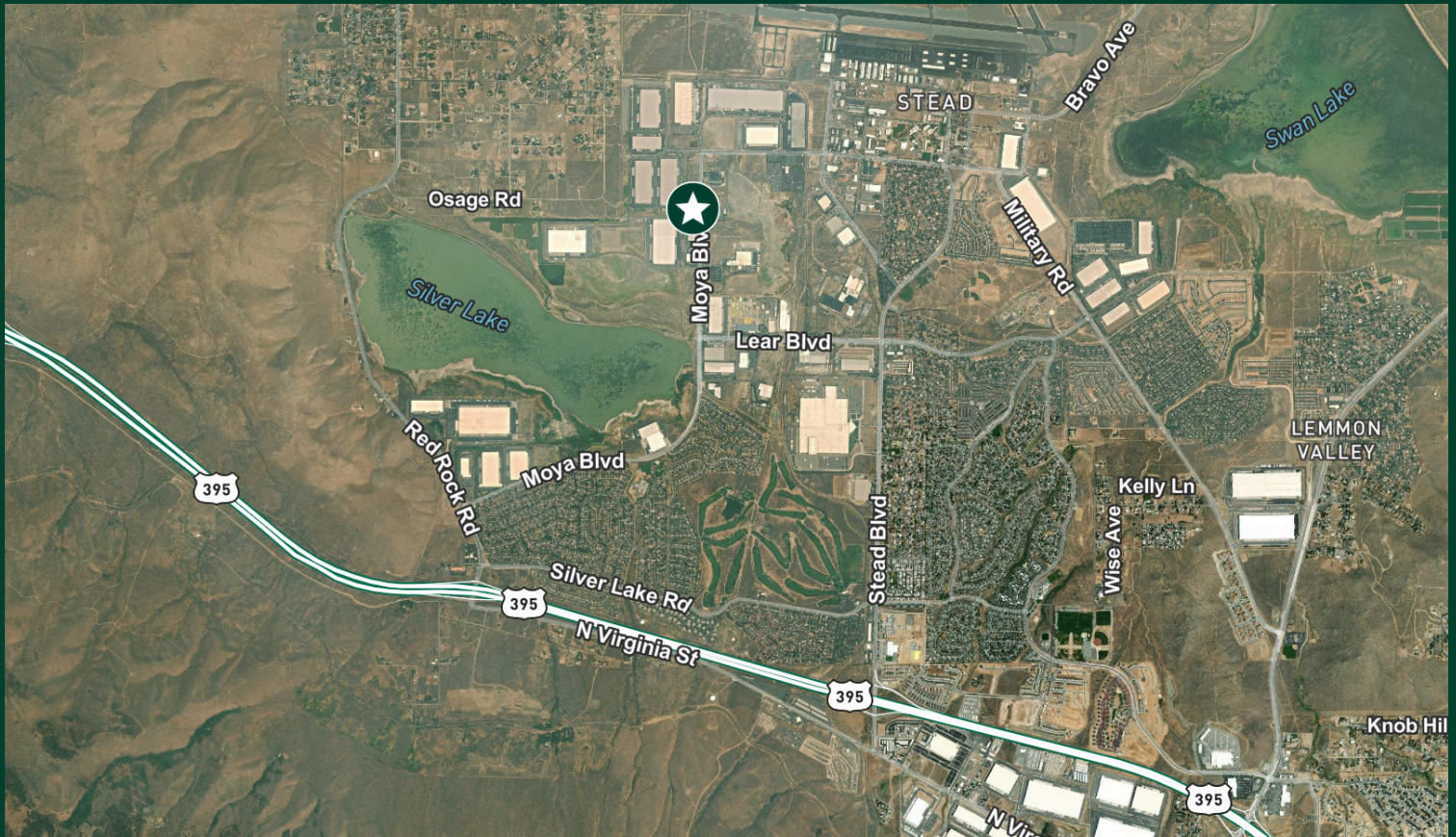
Available Space:	±70,070 SF
Office Space:	±2,000 SF
Dock Doors:	12
Dock Configuration:	Cross Dock
Clear Height:	26 Feet
Column Spacing:	40' x 70'
Sprinklers:	ESFR
Power:	800 Amps 277/480V 3 Phase



Location

Moya Boulevard

12755 Moya Blvd. is located in the heart of the North Valleys Industrial submarket of Reno. It is located within close proximity to the Reno-Stead Airport and US 395.



Contact Us

Greg Shutt, SIOR

Executive Vice President
+1 775 823 6923
greg.shutt@cbre.com
Lic. S.0046346

Eric Bennett

Executive Vice President
+1 775 823 6963
eric.bennett@cbre.com
Lic. S.0046241

© 2024 CBRE, Inc. All rights reserved. This information has been obtained from sources believed reliable, but has not been verified for accuracy or completeness. You should conduct a careful, independent investigation of the property and verify all information. Any reliance on this information is solely at your own risk. CBRE and the CBRE logo are service marks of CBRE, Inc. All other marks displayed on this document are the property of their respective owners, and the use of such logos does not imply any affiliation with or endorsement of CBRE. Photos herein are the property of their respective owners. Use of these images without the express written consent of the owner is prohibited.